

Proposed Development Agreement for Brand Energy

1. All landscaped areas and plants required by Planning Board, Staff, Zoning Commission and City Commission must be permanently maintained in a healthy growing condition in order to accomplish the purpose for which it was required.
2. Dead or diseased plants, as determined by the Planning Board, Staff, Zoning Commission and City Commission, must be replaced within 30 days of notification, or as soon as practical in regard to freezing weather, or complex situations involving removal and replacement of large trees.
3. All plantings must be fertilized, irrigated, and pruned at such intervals necessary to promote optimum growth. All landscaped areas must be kept free of debris and weeds.
4. Plant material must not interfere with public utilities, restrict pedestrian or vehicular access, or constitute a traffic hazard.
5. All planting areas must be irrigated. An underground system equipped with an automatic timer is strongly recommended.
6. The owners, their agents and assigns, are responsible for providing, protecting, and maintaining all landscaping material in a healthy and growing condition, replacing it when necessary, and keeping it free of refuse and debris.

Site Plan Recommendations for Brand Energy

- I. Address rezoning and non-conforming use entitlement by allowing to be rezoned S.P. Planned Industrial
- II. Development will have to adhere to Masonry Performance Standards where new structures are proposed – alternative can be appealed under zoning ordinance 40-62.
- III. Performance standards must adequately address all potential nuisances – dust, noise, light, traffic and signage.
- IV. Must provide perimeter tree planting around perimeter of property. For screening purposes we recommend hybrid pine trees – contact National Forestry for information on how to obtain (Fencing-alternative that is reasonable and attractive).
- V. Storage and Lay Down area neat and orderly at all times.
- VI. Development agreement affirming to properly maintain the site at all times and not create a nuisance. If nuisances are created, property owner must promptly correct problems.





Fast Growing Trees Nursery

As Seen In



888-504-2001

Mon - Fri 9-6 EST



[Click to Find Your Growing Zone](#)

Texas Trees

Fast Growing - Highly Adaptable trees Perfect for Texas

Tree Types

- Home
- Fastest Trees
- Flowering Trees
- Customer Favorites
- Evergreens
- Extra Large Trees
- Shade Trees
- Privacy Trees
- Fruit Trees
- Fall Color Trees
- Shrubs & Hedges

Specific Trees

- Apple Trees
- Aspen Trees
- Autumn Purple Ash
- Bradford Pear Hybrids
- Cherry Trees (Flowering)
- Cherry Trees (Fruit)
- Crape Myrtle Trees
- Cryptomeria
- Dogwood Trees
- Ginkgo Trees
- Leyland Cypress
- Magnolia Tree
- Maple Trees
- Mimosa
- Oak Trees
- Rose Bushes
- Royal Empress Tree
- Thuja Green Giant
- Weeping Willow
- Willow Hybrid

More Information

- FAQ
- Contact Us
- Terms of Service
- Privacy Policy
- Replacement Guarantee
- Replacement Tree Application
- About Us

Best Seller

Thuja Green Giant



- Grows 3-5 feet yr.
- Large sizes available
- Takes up little room
- Disease resistant

[More Info...](#)

Best Seller

Royal Empress Tree



- Grows up to 12 ft. yr.
- Dense foliage
- Fragrant blooms
- Easy to grow

[More Info...](#)

Arapaho Crape



- Bright red color
- Blooms spring to fall
- Very disease resistant
- Grows in tight spots

[More Info...](#)

Leyland Cypress



- Most Widely Planted
- Grows 3-4 feet yr.
- Large sizes available
- Great for privacy

[More Info...](#)

Tulip Poplar



- Amazing gold foliage
- Grows up to 6 ft. yr
- Full yellow blooms
- Great for shade

[More Info...](#)

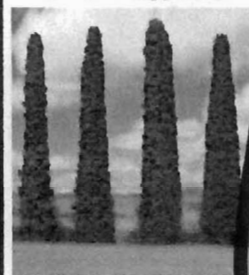
Willow Hybrid



- Fastest Growing Screen
- Grows up to 6 ft. yr.
- Disease Resistant
- Ideal for privacy hedge

[More Info...](#)

Italian Cypress



- Narrow, elegant look
- Naturally uniform
- Drought tolerant
- Easy to grow

Lombardy Poplar



- Grows up to 6 ft. yr.
- Easy to grow
- Great for windbreaks
- Fast growing privacy

Hybrid Poplar



- Grows up to 8 ft. yr.
- Disease resistant
- Highly adaptable
- Quick source of shade

More Info...

Muskogee Crape

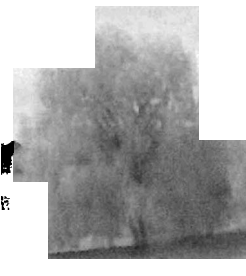


- Lavender blooms
- Beautiful in groupings
- Flowers for 120 days
- Very adaptable

More Info...

More Info...

Weeping Willow

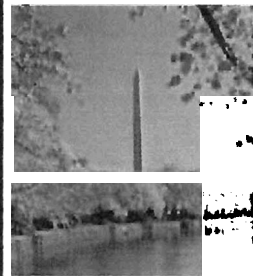


- Tree lover's favorite
- Easy to grow
- Even grows in puddles
- Very fast growing

More Info...

More Info...

Okame Cherry



- Gorgeous pink blooms!
- Spring's first flowers
- Ideal for small lots
- Compliments any lawn

More Info...

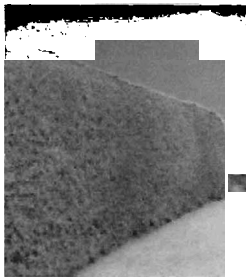
Kwanzan Cherry



- Vibrant pink blooms
- Tons of flowers!
- Clusters of 3-5 flowers
- Grows almost anywhere

More Info...

American Holly



- Fast Growing Holly
- Grows anywhere, even dry regions
- Ideal for privacy

More Info...

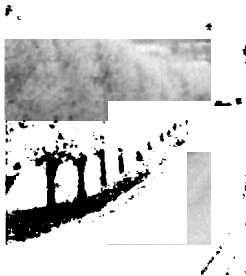
Autumn Purple Ash



- Long lasting orange, red & purple fall foliage
- Tolerant of many soils
- Attention-grabbing color

More Info...

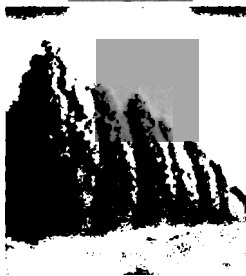
Cleveland Pear



- Flowering privacy tree
- Grows 3-4 ft. yr.
- Drought tolerant
- New pear tree hybrid

More Info...

Drought Resistant Evergreen



- Perfect for arid regions
- Great for poor soils
- Grows 3 feet yr.
- Very easy to grow

More Info...

Natchez Crape



- Fast growing
- Soft white blooms
- Very adaptable
- Longer lasting blooms

More Info...



Texas Trees

Finding the best trees for your Texas landscape can be challenging. With the climate ranging from dry wet and humid, and soil conditions going from loamy silt, sandy, to clay – it's no wonder! Planting trees most on where in Texas you live and what purpose the trees will serve.

While the Texas state tree is the pecan tree, a large tree native to Texas and North America, this still can be the best tree to plant for many Lone Star homeowners.

The Best Trees for Planting in Texas

Other outstanding Texas tree choices will include specimens that are highly adaptable to a variety of conditions, demonstrating drought-resistance as well as mildew and disease resistance.

Look for types of trees that are fast growing, hardy, and are perhaps even native Texas trees. For shade trees, we suggest oak trees, ash trees, or maple trees. Whether you are looking for screening trees, or flowering trees, you can find some of the best trees for Texas at the Fast Growing Trees Nursery.

A Large Variety of Texas Trees

Wherever your location – South Texas, Central Texas, West Texas, or the Panhandle – we can help. Our selection of Texas trees offers a wide selection of good trees for planting in Texas and a variety of solutions for your unique Texas landscape needs.

Texas Tree Planting Guide

You will find our descriptions, as well as tips for the best uses for our trees and shrubs extremely helpful. Use the photos above to learn more about our Texas tree suggestions. You'll see answers to your questions on disease resistance, how to plant, and even pruning advice.

[Evergreen Trees](#) [Shade Trees](#) [Privacy Trees](#) [Flowering Trees](#) [Empress Tree](#) [Thuja Giant](#) [Red Maple Trees](#)
[Crape Myrtle Trees](#) [Dogwood Trees](#) [Weeping Willow](#) [Thuja Green Giant](#) [Crape Myrtle Tree](#) [Royal Empress Tree](#)
[Evergreen Tree](#) [Flowering Tree](#) [Crape Myrtle Trees](#) [Privacy Tree](#) [Royal Empress Trees](#) [Crape Myrtle Tree](#)
[Weeping Willow Tree](#) [Roses](#) [Holly Tree](#) [Leyland Cypress](#) [Fruit Trees](#) [Paulownia Trees](#) [Double Knockout Roses](#)
[Trees](#) [Crape Myrtle](#) [Crape Myrtle](#) [Tree Nursery](#) [Buy Trees Online](#) [Paulownia](#) [Evergreen Trees](#) [Shade Trees](#)
[Flowering Trees](#) [Leyland Cypress](#)

Copyright © 2008 Fast Growing Trees Nursery. All Rights Reserved

Brand Energy and Infrastructure Services Acquires Industrial Specialists, L.L.C. and Protherm Services Group

FOR IMMEDIATE RELEASE

November 15, 2007, Kennesaw, GA: Brand Energy and Infrastructure is pleased to announce the acquisition of Industrial Specialists, L.L.C. ("ISI") and Protherm Services Group, LLC ("Protherm") effective Nov. 15, 2007

Both ISI and Protherm are leading providers of specialty craft services in the U.S. Gulf Coast region. The companies serve major oil refiners, chemical manufacturers and large engineering and construction firms. The acquisitions further strengthen Brand's position as the leading integrated specialty services provider on the Gulf Coast.

"The Gulf Coast region is a rapidly expanding industrial market with a growing need for a specialty services provider that can deliver an integrated, single-source solution. We are delighted to be purchasing best-in-class businesses that provide Brand with the opportunity to significantly expand our presence in the robust Gulf Coast refining and petrochemicals markets. These acquisitions will allow Brand to better meet our customers' needs with more locations, an expanded portfolio of service offerings and a larger labor pool," said Paul Wood, President and CEO Brand Energy and Infrastructure Services. "We are excited to welcome the ISI and Protherm employees to Brand and are committed to combining the best of the three companies to continue to build upon our heritage of providing world-class solutions to our customers."

About Brand Energy and Infrastructure Services

Brand Energy and Infrastructure Services is a diversified provider of specialty services to North America's energy markets. Its extensive portfolio of service offerings includes scaffolding, industrial coatings, insulation, refractory, forming and shoring solutions, and other related soft crafts. Brand operates in five key energy sectors: refinery, petrochemical, oil sands, power generation and offshore oil and gas. The company also serves the commercial and infrastructure construction markets throughout North America and in strategic international regions.

In connection with the announcement of these two acquisitions, Brand is releasing preliminary, unaudited proforma results for the twelve-month period ending September 30, 2007. The Company is releasing these preliminary, unaudited results based upon information available to date because Brand expects to provide this information to certain potential investors in the proposed expansion of its existing credit facilities. This proposed expansion consists of an additional \$175.0 million of first lien debt and \$75.0 million of second lien debt.

These pro-forma expected results for the twelve months ended September 30, 2007 include combined operations for Brand and all of its recent and pending acquisitions as if they were completed on October 1, 2006. Brand expects to report for the twelve months ending September 30, 2007 proforma consolidated revenues of approximately \$1,438.2 million, proforma gross profit of approximately \$421.7 million and proforma adjusted EBITDA of approximately \$220.8 million. Gross profit is defined as revenue less direct operating expenses before deducting divisional overhead expenses. Brand expects pro-forma maintenance capital expenditures for this period to be approximately \$10.5 million and growth capital expenditures to be approximately \$34.8 million. In addition to the pending acquisitions of Protherm and ISI, the combined businesses include the results of Tesco of Houma, Inc, Associated Insulation Services and Doug Chalmers Construction, Ltd., all three of which were acquired during the first three quarters of 2007.

On a standalone basis for the twelve months ended September 30, 2007, Brand expects to report revenues of approximately \$963.3 million, gross profit of approximately \$327.5 million and adjusted EBITDA of approximately \$160.9 million. Gross profit is defined as revenue less direct operating expenses before deducting divisional overhead expenses. Brand expects maintenance capital expenditures for this period to be approximately \$8.1 million and growth capital expenditures to be approximately \$31.6 million. These standalone results exclude any of the aforementioned recent or pending acquisitions.

As of September 30, 2007, Brand had total long-term debt of \$935.1 million. Pro-forma for the proposed expansion of the existing credit facilities and the repayment of \$57.1 million currently drawn under our revolving credit facility, we expect to have total indebtedness of \$1,128.0 million.

Because the third quarter has only recently ended, the information in this release is, by necessity, preliminary in nature and based only upon preliminary, unaudited information available to Brand as of the date of this release. Investors should be aware that the information in this release is subject to change upon the release of Brand's audited results and therefore should exercise caution in relying on the information in this release. Information regarding certain financial performance measures not discussed in this release is not provided because the third quarter has only recently ended and final estimates of certain items used in the calculations of such measures are not yet available. Investors should not draw any inferences from this information regarding financial or operating data that is not discussed in this release.

About Industrial Specialists, L.L.C.

Industrial Specialists, L.L.C. has been a leading multi-craft industrial services provider since 1976. The company's headquarters are in Angleton, TX. ISI is one of the most successful companies in the United States in building a large-scale multi-craft portfolio of services. These service offerings include insulation, scaffolding, refractory, painting, heat tracing, fireproofing and corrosion protection.

About Protherm Services Group

Protherm Services Group is an experienced provider of multi-craft services to the maintenance and construction industries throughout the Gulf Coast region. With over 70 years in operation, Protherm has developed an outstanding reputation for its commitment to quality and service. Protherm's service offerings include coatings, insulation, scaffolding, fireproofing and tank linings.

Use of Non-GAAP Financial Metrics

Brand uses certain measures that are not defined by GAAP (Generally Accepted Accounting Principles) to evaluate various aspects of its business. Adjusted EBITDA is a non-GAAP financial measure and should be considered in addition to, not as a substitute for, net cash flows from operating activities reported in accordance with GAAP. These terms as defined by Brand may not be comparable to similarly titled measures used by other companies.

Adjusted EBITDA is defined as income from operations before special charges, non-cash depreciation and amortization, gain/loss on sale or retirement of assets, asset impairment charges and option compensation expense. As such, it eliminates the significant non-cash depreciation and amortization expense that results from the capital-intensive nature of Brand's businesses and intangible assets recognized in business combinations as well as other non-cash or non-recurring items, and is unaffected by Brand's capital structure or investment activities. Adjusted EBITDA also includes synergies and other adjustments associated with the aforementioned recent and pending acquisitions. Adjusted EBITDA is a liquidity measure used by Brand's management and the Board of Directors to measure Brand's ability to fund operations and its financing obligations. However, this measure is limited in that it does not reflect the periodic costs of certain capitalized tangible and intangible assets used in generating revenues and the cash cost of financing.

Brand believes that adjusted EBITDA provides information useful to investors in assessing Brand's ability to service its debt, fund operations, and make additional investments with internally generated funds.

Contact info:

Faran Latafat

Faran.Latafat@beis.com

www.beis.com

Tel.: 905-660-8176

BRAND ENERGY
SITE IN HOUSTON
NEXT TO RESIDENTIAL

