

---

# MEMO

---

**TO:** Mayor Doyle, Planning Board and Zoning Commission

**FROM:** Don Carroll, City Planner

**DATE:** August 28, 2008

**RE:** Recommendation to Amend Section 40-59, Deleting Chain Link Fence With Slat Inserts as a Screening Alternative

We are recommending an amendment to Section 40-59 deleting chain link fences with slat inserts as an allowable screening alternative. This recommendation is based upon the following reasons:

- a) This is a logical and reasonable progression which follows the recent work completed and approved in updating the Subdivision, Zoning and Development Plan Ordinances ( the City's effort to have contemporary ordinances with enhanced performance standards).
- b) A recent issue raised during a rezoning Public Hearing request which revealed to Staff and our Land Use Boards the need for clarity in our Zoning Ordinance provisions. This change would articulate exactly what the requirements are in order for new development to achieve the City's vision for aesthetics and sustain ability within our Gateway Corridors as it relates to screening.

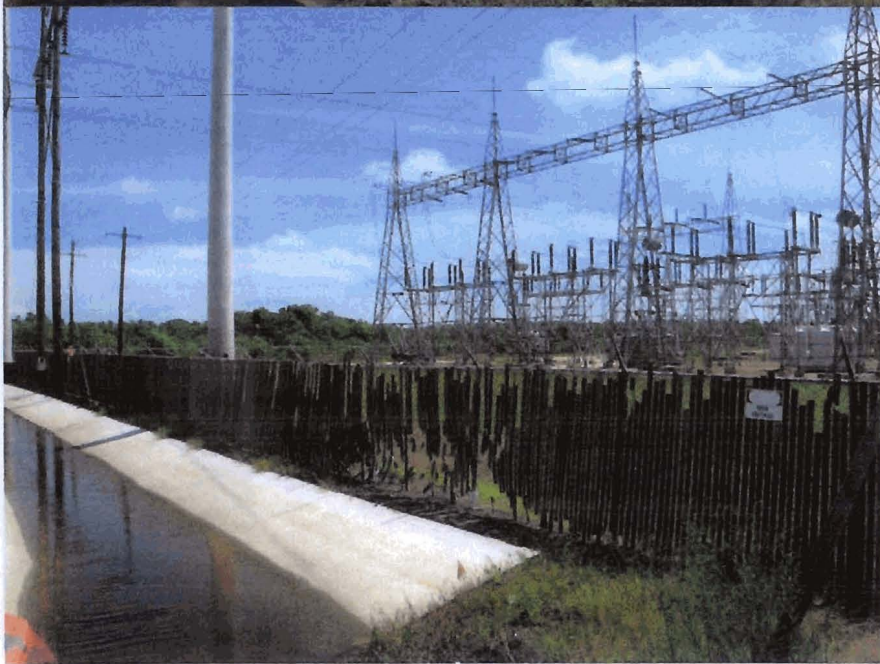
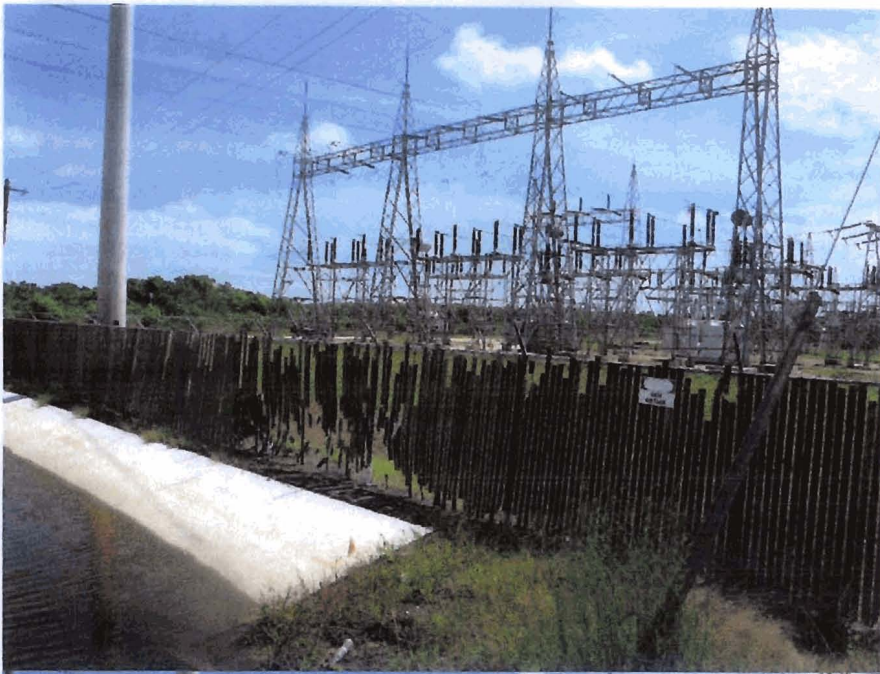
Staff has conducted a reconnaissance taking pictures of existing developments utilizing chain link fences with slat inserts and contrasting this concept with masonry fences and other fence combinations. This would include wrought iron fencing with shrubs that should be aesthetically pleasing and not onerous or cost prohibitive for future developments striving to look attractive and appealing.

DRC:jv

CHAIN LINK  
FENCE W  
SLAT INSERTS



SAMPLES  
OF  
CHAINLINK  
FENCE W  
SLAT INSERTS



CHAIN LINK  
FENCE W  
SLAT INSERTS



SAMPLE OF SOLID FENCE



~~SAMPLE~~

Delaney Cove  
SAMPLE OF SOLID FENCE



DELANEY COVE





SAMPLE OF SOLID FENCE











