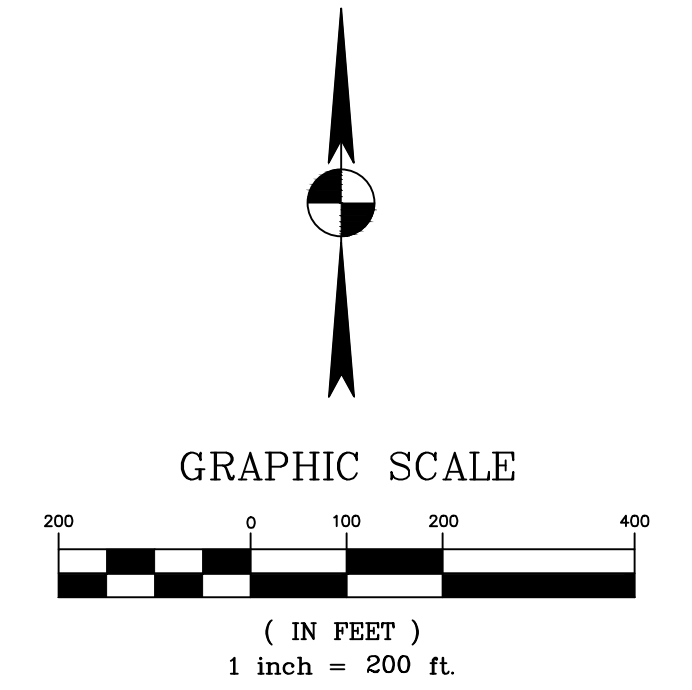
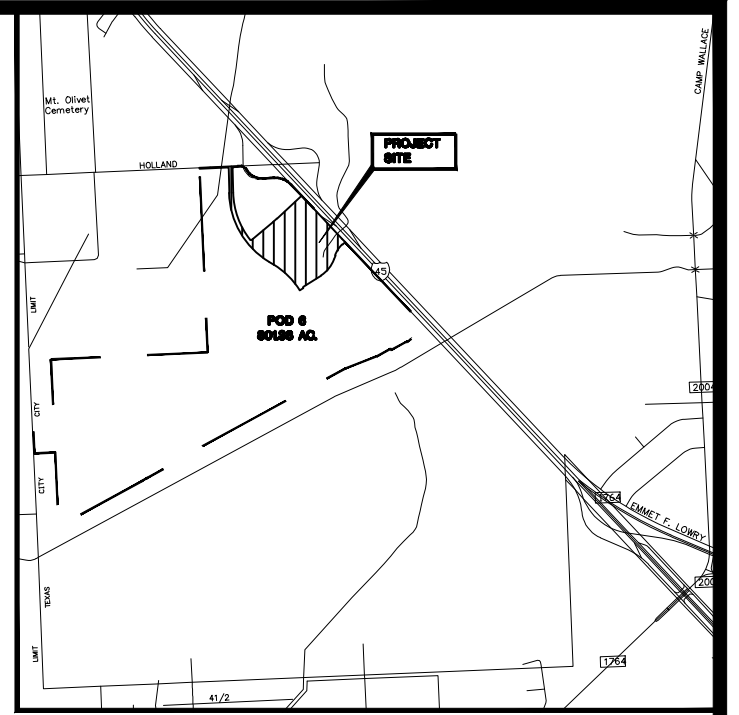
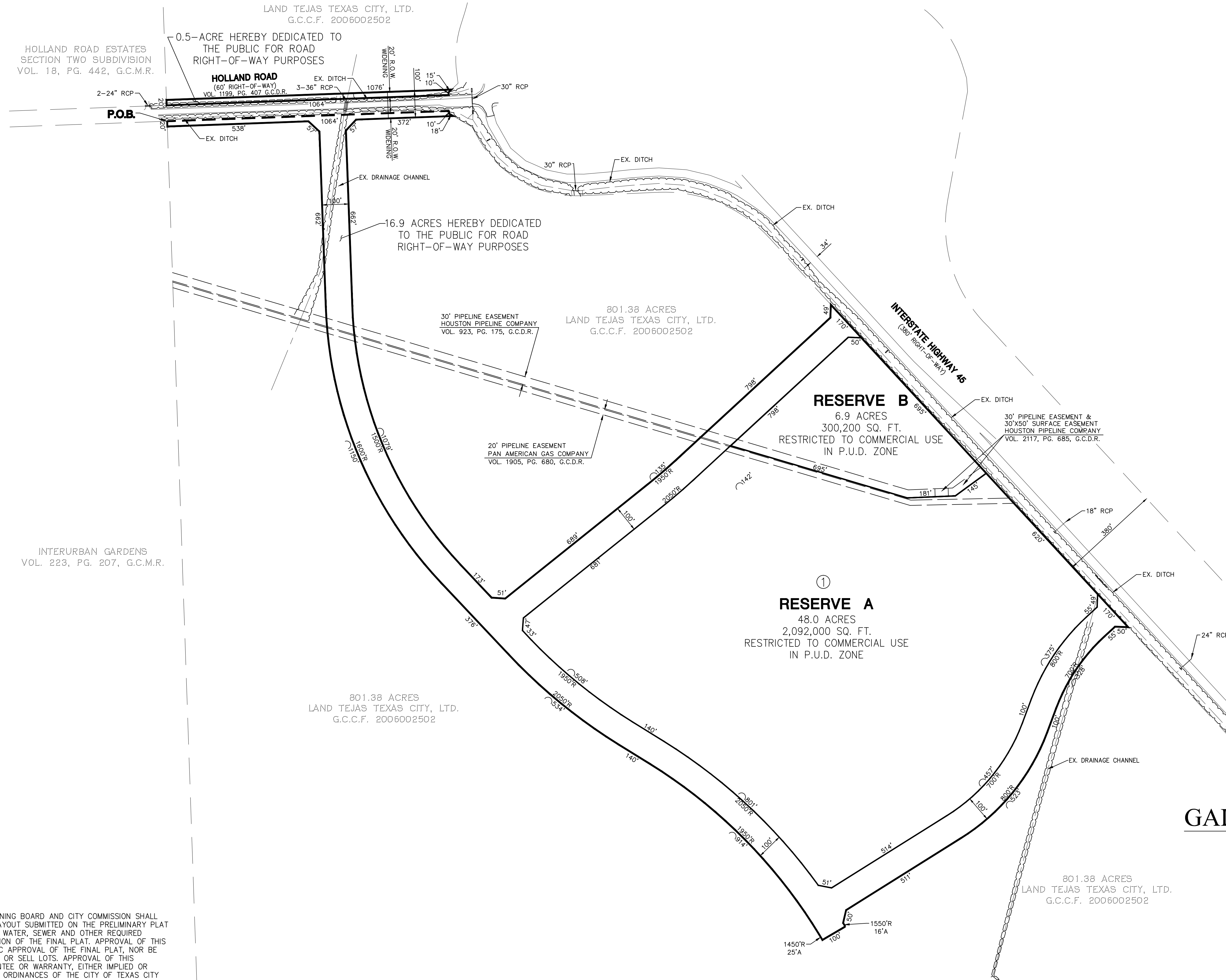


ALEXANDER FARMER LEAGUE, ABSTRACT 11
GALVESTON COUNTY, TEXAS



**GALVESTON PREMIUM OUTLETS
SUBDIVISION**

OF 71.8 ACRES OF LAND OUT OF THE
ALEXANDER FARMER LEAGUE, ABSTRACT 11
GALVESTON COUNTY, TEXAS

2 RESTRICTED RESERVES 1 BLOCK

MARCH 2011

PRELIMINARY PLAT STANDARD NOTES

"APPROVAL OF THIS PRELIMINARY PLAT BY THE PLANNING BOARD AND CITY COMMISSION SHALL BE DEEMED AN EXPRESSION OF APPROVAL OF THE LAYOUT SUBMITTED ON THE PRELIMINARY PLAT AS A GUIDE TO THE FINAL ENGINEERING OF STREETS, WATER, SEWER AND OTHER REQUIRED IMPROVEMENTS AND UTILITIES AND TO THE PREPARATION OF THE FINAL PLAT. APPROVAL OF THIS PRELIMINARY PLAT SHALL NOT CONSTITUTE AUTOMATIC APPROVAL OF THE FINAL PLAT, NOR BE CONSIDERED AUTHORIZATION TO BEGIN CONSTRUCTION OR SELL LOTS. APPROVAL OF THIS PRELIMINARY PLAT SHALL NOT CONSTITUTE A GUARANTEE OR WARRANTY, EITHER IMPLIED OR OTHERWISE THAT ALL OTHER APPLICABLE CODES AND ORDINANCES OF THE CITY OF TEXAS CITY HAVE BEEN COMPLIED WITH. IT SHALL BE THE RESPONSIBILITY OF THE SUBDIVIDER TO ENSURE THAT ALL APPLICABLE REQUIREMENTS OF THE CITY OF TEXAS CITY RELATIVE TO THE SUBDIVIDING AND DEVELOPMENT OF PROPERTY HAVE BEEN MET."

ON THE _____ DAY OF _____, 2011, THIS PRELIMINARY PLAT WAS DULY APPROVED BY THE PLANNING BOARD OF THE CITY OF TEXAS CITY.

SIGNED: _____
SECRETARY OF THE CITY OF TEXAS CITY PLANNING BOARD

SIGNED: _____
CHAIRMAN OF THE CITY OF TEXAS CITY PLANNING BOARD

ENGINEER & SURVEYOR:

Bury+Partners
ENGINEERING SOLUTIONS
Bury+Partners-Houston, Inc. © 2010
13100 Northwest Freeway, Suite 150
Houston, Texas 77040
Tel. (713) 212-0011 Fax (713) 212-0010
TBPE Registration Number F-1048

DEVELOPER:

TBD GALVESTON PREMIUM OUTLETS, LLC
A DELAWARE LIMITED LIABILITY COMPANY
105 EISENHOWER PARKWAY
ROSELAND, NJ. 07068
(973) 403-3167

OWNER:

LAND TEJAS TEXAS CITY, LTD.
A TEXAS LIMITED PARTNERSHIP
2450 FONDREN RD., SUITE 210
HOUSTON, TEXAS 77063
(713) 783-6702