

GENERAL NOTES:

1. ALL RIGHT OF WAYS ARE SIXTY (60) FEET IN WIDTH UNLESS OTHERWISE NOTED.
2. ALL CUL-DE-SAC RADIUS ARE FIFTY (50) FEET UNLESS OTHERWISE NOTED.

— MASONRY WALL

Note:

THE DETENTION POND SERVING PHASES 1, 2 AND 3 WILL BE PHASED AND THE TRAIL SYSTEM AROUND THE POND WILL BE BUILT WITH PHASE 3 OF THE POND.

412 CENTRAL PARK, LTD.
C.F. NO. 2006074418
O.P.R.G.C.

412 CENTRAL PARK, LTD.
C.F. NO. 2006074418
O.P.R.G.C.

412 CENTRAL PARK, LTD.
C.F. NO. 2006074418
O.P.R.G.C.

16.1630 ACRES
C.F. NO. 2016021487
O.P.R.G.C.

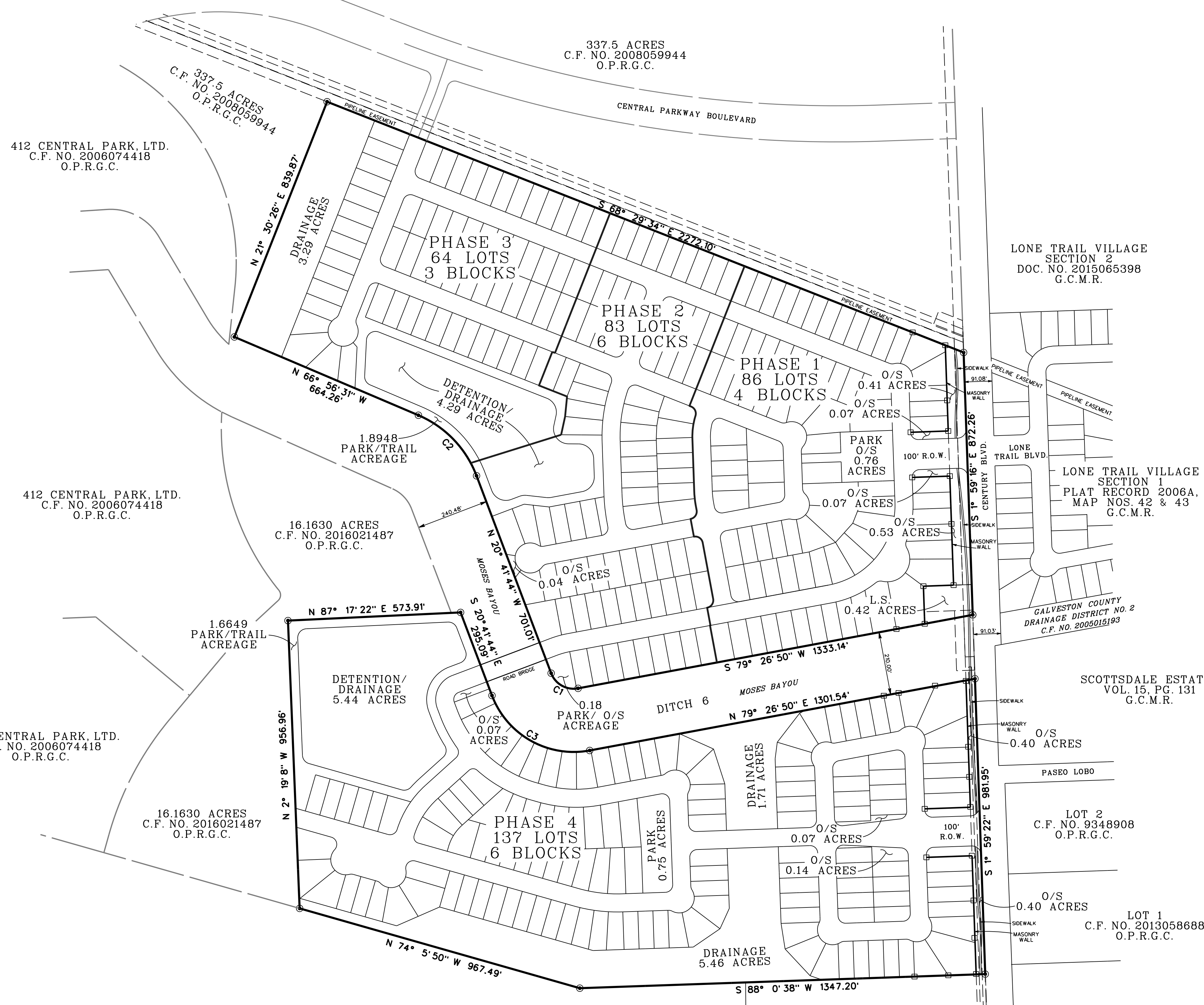
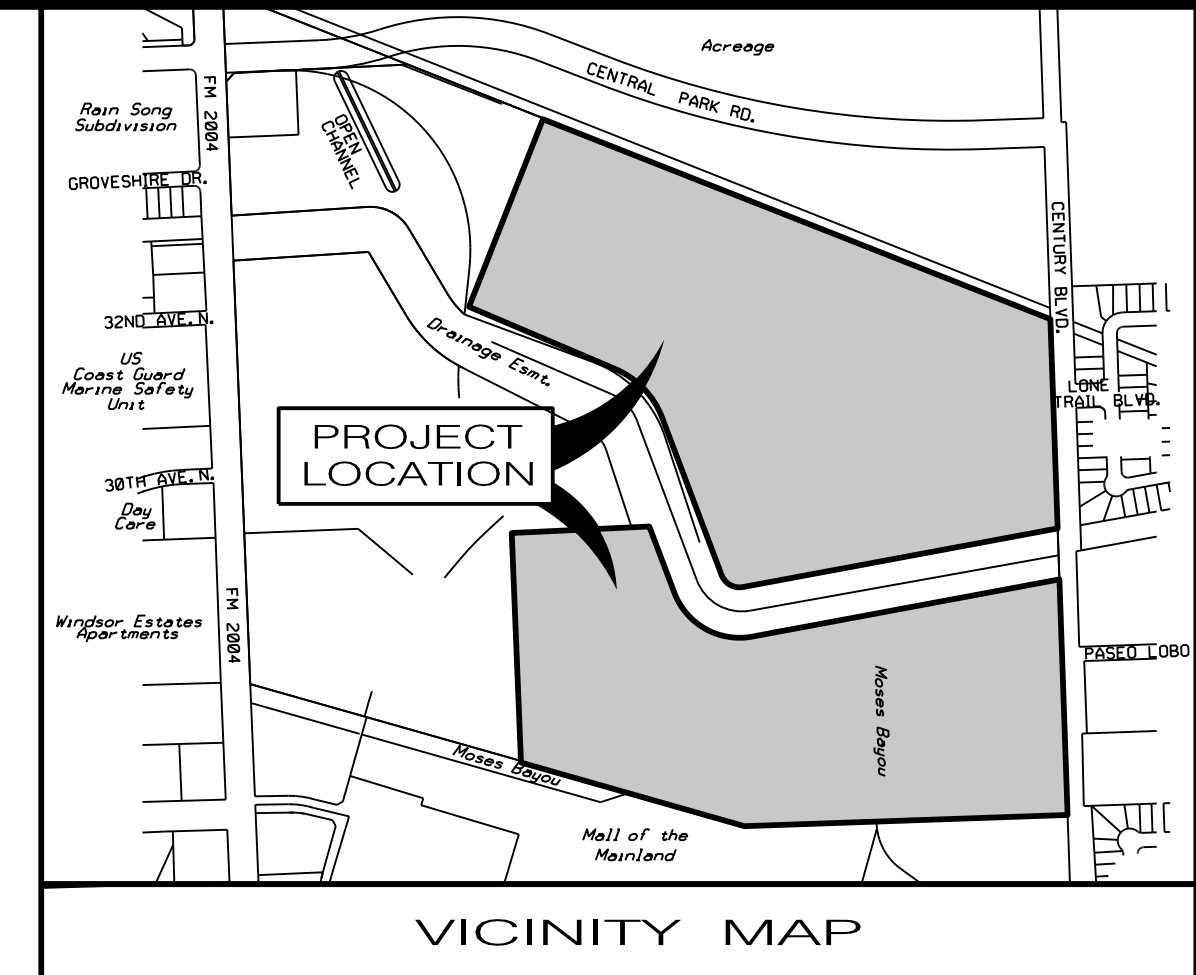
LOT 5
MALL OF THE MAINLAND
VOL. 18, PG. 446-448 G.C.M.R.

LOT 14
MALL OF THE MAINLAND
VOL. 18, PG. 446-448 G.C.M.R.

337.5 ACRES
C.F. NO. 2008059944
O.P.R.G.C.

337.5 ACRES
C.F. NO. 2008059944
O.P.R.G.C.

LOT SUMMARY:
50' X 120' 370 LOTS



PARK / TRAIL TABLE			
PARK ACREAGE	1.69 ACRES		
TRAIL ACREAGE	3.56 ACRES		
TOTAL	5.25 ACRES		

CURVE DATA TABLE

NUMBER	ARC LENGTH (FEET)	RADIUS (FEET)	DELTA ANGLE	CHORD DIRECTION	CHORD LENGTH (FEET)
C1	111.50	80.00	79° 51' 26"	N 60° 37' 2"	102.69
C2	286.54	355.00	46° 14' 47"	N 43° 49' 7"	278.82
C3	404.19	290.00	79° 51' 26"	S 60° 37' 2"	372.26

APPROVED

GENERAL PLAN OF
CENTRAL PARK

BEING +/- 109.73 ACRES OF
LAND OUT OF THE
W.K. WILSON SURVEY, A-208
GALVESTON COUNTY, TEXAS

OCTOBER, 2019

PREPARED BY:

Costello



ENGINEER/SURVEYOR:

2107 CITY WEST BLVD., 3RD FLOOR
HOUSTON, TEXAS 77042
(713) 783-7788 FAX: 783-3580
TBPE FIRM REGISTRATION NO. 280
TBPLS FIRM REGISTRATION NO. 100486

OWNERS:
MERITAGE HOMES OF TEXAS, LLC
AN ARIZONA LIMITED LIABILITY COMPANY
DAVID JORDAN SR., VICE PRESIDENT
3250 BRIARPARK, SUITE 100
HOUSTON, TEXAS 77042
713-690-1166