

EKA

P.O. Box 932 • Grayson, GA 30017-0018  
 770.498.9316 • 866.498.9316 • 770.498.9318 (fax)  
 EKA**Sales.com**



# Customer Quote

EKA Quote #	Date	Quote valid until:
10329	5/11/2021	6/10/2021

Name / Address	
City of Texas City 1801 9th Ave N Texas City, TX 77592 raven@texascitytx.gov Ronnie Aven 409-682-6838	
Solicitation number	BuyBoard Quote

Delivery Address
City of Texas City 1801 9th Ave N Texas City, TX 77592

EKA Quote Contact	Contract Number	Payment Terms	F.O.B. terms	Dealer
earle@ckasales.com	597-19	Net 30 via EFT or check	Destination	Monk JCB

Item / Description	Qty	Price Each	Total
320C JCB TM320: Articulated Telescopic Loader (Construction) Tier 4 Final INCLUDES:Tier 4 Final JCB EcoMAX turbo intercooled, 125 hp. Dual element aircleaner, spin-on fuel filter, fuel/water separator, thermo start assist, anti-freeze protection. JCB 4 speed autoshift transmission, Powershift direction change, 24 mph travel speed, 12 inch torque converter, transmission disconnect on foot brake. Brakes: Internal mounted inboard on front axle, multi disc, oil immersed, servo assisted hydraulic actuation, self adjusting, independent disc type parking brake with brake on alarm and transmission disconnect. Electrics: 12 volt, IP 67 water and dust resistant connectors with numerical coded wiring, 80 amp alternator with heavy duty low maintenance battery at 900CCA. Instruments: Audible and visual warning system, tachometer, hourmeter, fuel gauge, coolant temp gauge, warning lights for battery charge, air cleaner restriction, engine oil pressure, engine coolant temp, trans oil pressure, parking brake, lift-extend and tilt on single lever control. Cab: Meets SAE J231 FOPS/SAE J1040 ROPS requirements, air suspension seat with seat belt, tilt steering column, air conditioning and heater with defroster vent system, windshield wipers and washers for front/rear and roof glass, rear view mirror, front worklights, horn, in cab storage, reverse alarm meets SAE J994, operators manual, deluxe mirrors. Left Hand Cloumn F-N-R Stalk; Standard External Mirrors; Front and Rear Sun Blinds; Interior Light Aux Pressure Relief Switch; Standard Reverse Alarm; Halogen Worklights (2 Front /2 Rear); Rear Recovery Hitch. Hydraulics: Cab Mounted Single lever Servo joystick with ""loader"" pattern control proportional boom extend and auxiliary functions, Piston Pump load sensing system with 37 GPM, single auxiliary hydraulic service. Includes pressure release. Loader: Two section, 17ft 1in lift height with hydraulic parallel lift, 6390 lbs maximum lift capacity. With hydraulic boom suspension. LiveLink: Five year subscription allows for enhanced machine security, improved service monitoring, and modernized fleet control. Warranty: 2 Yr / 2000Hr Full Standard Warranty. 406A172 MICHELIN BIBLOAD 460/70 R24 406B124 CAB WITH AIR CON - FULL ROPS/FOPS 406C004 Q-FIT QUICKHITCH - NORTH AMER ICA 406D200 STANDARD DIFFERENTIAL MAXTRAC AXLES 406E001 SINGLE AUXILIARY - Q-FIT 406F257 OPERATOR MANUAL	1	120,221.45	120,221.45

**Total**

EKA

P.O. Box 932 • Grayson, GA 30017-0018  
770.498.9316 • 866.498.9316 • 770.498.9318 (fax)  
EKA**Sales.com**



# Customer Quote

EKA Quote #	Date	Quote valid until:
10329	5/11/2021	6/10/2021

Name / Address	
City of Texas City 1801 9th Ave N Texas City, TX 77592 raven@texascitytx.gov Ronnie Aven 409-682-6838	
Solicitation number	BuyBoard Quote

Delivery Address
City of Texas City 1801 9th Ave N Texas City, TX 77592

EKA Quote Contact	Contract Number	Payment Terms	F.O.B. terms	Dealer
earle@ckasales.com	597-19	Net 30 via EFT or check	Destination	Monk JCB

Item / Description	Qty	Price Each	Total
406H006 PALLET FORK - 48 INCH FOR Q-FIT QUICKHITCH 406P001 SMOOTH RIDE SYSTEM 406H015 1.0M3 GP SHOVEL AND TOEPLATE FOR Q-FIT QUICKHITCH  Includes delivery and machine orientation  Local Dealer: Monk JCB 11211 North Fwy Houston, TX 77037  Delivery Time: 210-240 days ARO			

DUNS: 07-594-9644; TIN: 58-1328598; Cage Code: 2Y851. We appreciate the opportunity to serve your government business needs.	<b>Total</b> <span style="float: right;"><b>\$120,221.45</b></span>
---	---



# JCB Certificate Of Warranty



Subject to the following provisions JCB and the Dealer shall as their sole warranty make good, or cause to be made good by repair or replacement (at JCB's option), free of charge to the buyer at the premises of the Dealer; any defects in JCB's products arising in JCB's opinion, from faulty material or workmanship which shall become apparent within the warranty period (as hereinafter defined).

## I. General

(a) This warranty applies only when the JCB product is maintained and operated under normal conditions and serviced according to JCB specifications and recommendations. This warranty does not extend to failures, defects or damage subsequently attributed to wear and tear, improper adjustment, neglect, misuse, operation beyond rated or recommended capacity, alterations or specifications, accident, use of lubricants not specified by JCB, or the use of parts or products other than those specified by JCB for required maintenance service or repair

(b) The buyer must promptly notify the authorized JCB Dealer of any claim under this warranty specifying full particulars of the alleged defect, machine serial number, the hours worked, the date the machine was delivered to the buyer and the date the alleged defect became apparent, and if the authorized JCB Dealer shall so request, the buyer shall return at his cost all defective parts to the authorized JCB Dealer

(c) This warranty shall cease if:

(i) The JCB Machine Installation Checklist found in the operators manual shall not have been returned duly completed to the Dealer from whom the applicable JCB Product was purchased, leased or placed onto a capitalized rental fleet within seven (7) days of the delivery of the JCB Product to the buyer

(ii) Any name or number plates or other identification marks on the the JCB Product shall have been removed or defaced

(d) This warranty does not extend to parts, equipment and attachments not manufactured by JCB, but JCB shall, so far as possible, pass to the Buyer the benefit of any warranty of the manufacturer of such parts, equipment and attachments

(e) Some states do not allow the exclusion or limitations of limited warranties or consequential damages, so the limitations or exclusions may not apply to you

This warranty gives you specific legal rights and you may also have other rights that vary from state to state

## I. Warranty Period

(a) The warranty period in relation to JCB Products shall be the following for machines wholesaled after January 1 st, 2007 and retailed after July 9th, 2007

(i) Machines (Backhoes, Loadalls, Articulated Dump Trucks, Articulated Loading Shovels, Rough Terrain Fork Lifts and other machines specified in JCB's Machine Price List) will have a two year or 2000 hour standard manufacture warranty.

3 year structural warranty to include Chassis, Boom, Dipper, Undercarriage, Mainframe, Masts, Loader Arms, Boom Base, Beam, Carriages, Kingpost and Carriage

(ii) Where, within the warranty period of a JCB Product, defective attachment to be replaced with a new attachment, the warranty with respect to the new attachment shall not exceed the unexpired warranty portion of the warranty period of the original JCB Product

(iii) Where, within the warranty period of a JCB Product, a defective part to be replaced with a new Part, the warranty with respect to the new Part shall not exceed the unexpired warranty portion of the warranty period of the original JCB Product

(b) The warranty period shall start:

(i) On the date of delivery to the first Buyer; or

(ii) In the case of lease or rental machines at the time when the Dealer first disposes of the JCB Product by way of lease or rental; or

(iii) In the case of machines previously used as demonstrators, upon initial sale, lease or rental of the machines or upon the reaching of 200 hours of operation, whichever shall occur first

## II Extended Warranty

JCB offers Customers the ability to purchase extended warranty for new JCB Product within the first 12 months (Fastrac only 6 months) of retail. This warranty must be registered by an authorized JCB Dealer via the Assetcare Website. The Customer must retain a copy of the Extended Warranty Certificate for their records and present it to an authorized JCB Dealer at the time of failure within the extended warranty period.

THE EXPRESS WARRANTY HEREIN IS IN LIEU OF ANY OTHER EXPRESS OR IMPLIED WARRANTY, CONDITION OR GUARANTEE BY JCB OR THE DEALER WHETHER STATUTORY OR OTHERWISE, INCLUDING ANY IMPLIED WARRANTY OF MERCHANTABILITY OR FITNESS FOR ANY PARTICULAR PURPOSE, EXCEPT FOR THE EXPRESS LIABILITY UNDER THIS EXPRESS WARRANTY NEITHER JCB NOR THE DEALER SHALL HAVE ANY OBLIGATION OR LIABILITY FOR ANY INCIDENTAL, CONSEQUENTIAL OR OTHER LOSS, DAMAGE OR INJURY RESULTING DIRECTLY OR INDIRECTLY FROM THE SALE, LEASE, RENTAL, OR OTHERWISE USE OF JCB PRODUCTS OR RESULTING FROM ANY DEFECTS IN ANY JCB PRODUCTS.



## ARTICULATED TELESCOPIC HANDLER | TM320

Gross power: TM320: 125 hp (93 kW) | Lift capacity: 6390 lb (2898 kg) | Lift height: 17'1" (5,200 mm)



## STRENGTH YOU CAN RELY ON.

THE TM320 IS DESIGNED AND BUILT WITHOUT COMPROMISE TO PROVIDE ALL THE STRENGTH AND POWER YOU NEED IN AN ARTICULATED MACHINE.



### Proven reliability.

- 1 JCB machines are stress-tested over the equivalent of a lifetime of cycles, under the most arduous digging and dumping situations.
- 2 The centrally mounted lift, tilt and extension rams eliminate boom twisting, while centrally-mounted keyhole castings enhance the structural integrity.
- 3 JCB manufactures its own hydraulic cylinders, cabs, axles, transmissions and engines—all designed to work in perfect harmony for optimal reliability.
- 4 For long-term corrosion protection, cabs and bodywork panels are dipped in electrophoretic alloy prior to painting.

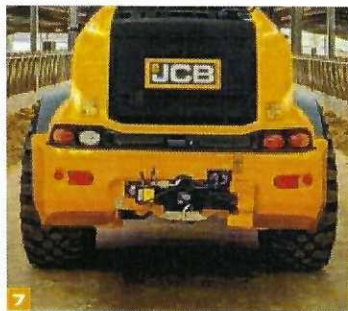


**Designed to work hard.**

- 6 A heavy-duty center joint absorbs vertical and horizontal load stress, for maximum durability and rigidity.
- 6 The boom is mounted into a heavy-duty loader tower and features an inverted-U profile and fully welded closing plates for exceptional strength.

- 7 The cast rear counterweight helps prevent impact damage. Recessed rear lights mounted above the counterweight are well protected.
- 8 Hydraulic hoses are routed within the main boom structure to guard against damage.

Wide core cooling pack with optional hydraulic reverse fan to eliminate debris build-up; the fan can be set to manual or automatic.



## THE POWER TO PERFORM.

THE TM320 IS EQUIPPED WITH THE SUPERB JCB ECOMAX ENGINE AND OFFERS 17'1" LIFT HEIGHT, 9'8" FORWARD REACH AND CLASS LEADING LIFT CAPACITY AND TEAROUT FORCE.

### JCB EcoMAX engine.

**1** The JCB TM320 features the JCB EcoMAX Tier 4 Final engine with variable geometry turbo. This 4.4 liter engine delivers a massive 405 ft lb torque at low engine speeds for optimum response and improved cycle times and tractive effort.



### Traction and travel.

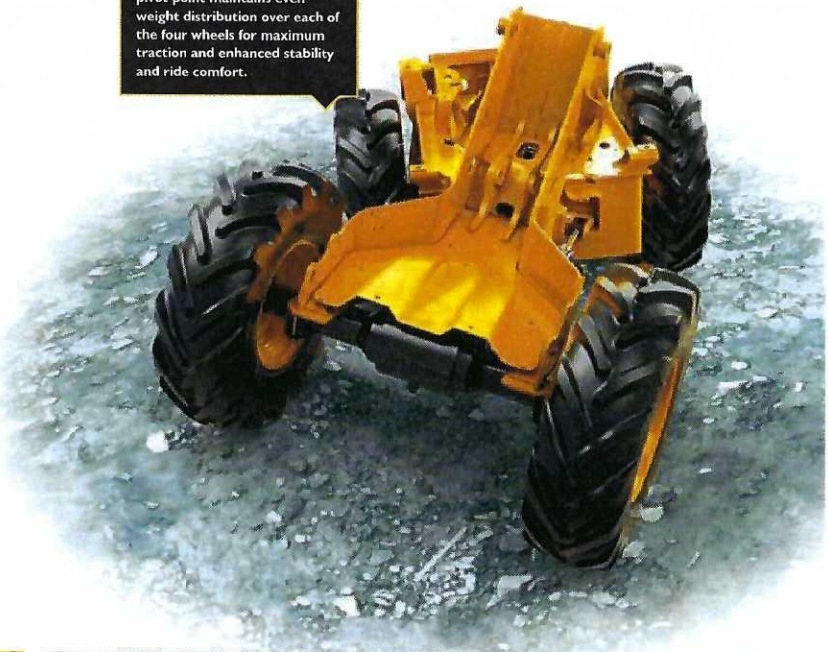
**2** With 4WD as standard, and optional limited slip differential, the JCB TM320 provide exceptional traction and performance on soft, muddy ground.

**3** For improved load retention, comfort and productivity, the TM320 are equipped with JCB's Smooth Ride System (SRS).

SRS can be auto-engaged while traveling at speeds exceeding 4 mph (6 kph), manually engaged via a rocker switch (with the boom in any position), or constantly activated.



A unique oscillating center-pivot point maintains even weight distribution over each of the four wheels for maximum traction and enhanced stability and ride comfort.



**Hydraulics and versatility.**

4 The ability to change flow rate on the go is perfect for straw spreader or sweeper use, while the second boom auxiliary option accommodates a wide range of twin auxiliary attachments.

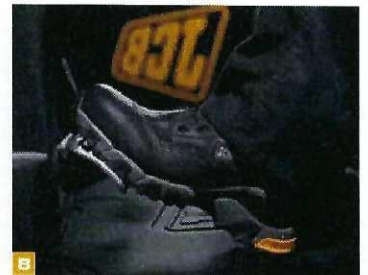
5 Available LED work light packages include boom and cab-mounted forward options, and a rear-mounted hitch light, for enhanced visibility and productivity at night and in dark operating environments.

6 For easier connection to attachments and accurate placement of loads, the JCB TM320 feature side-shift functionality.

7 An optional hydraulic rear tow hitch further increases machine versatility. The tow hitch features a fold-up design to prevent impact damage and grounding when working on uneven ground.

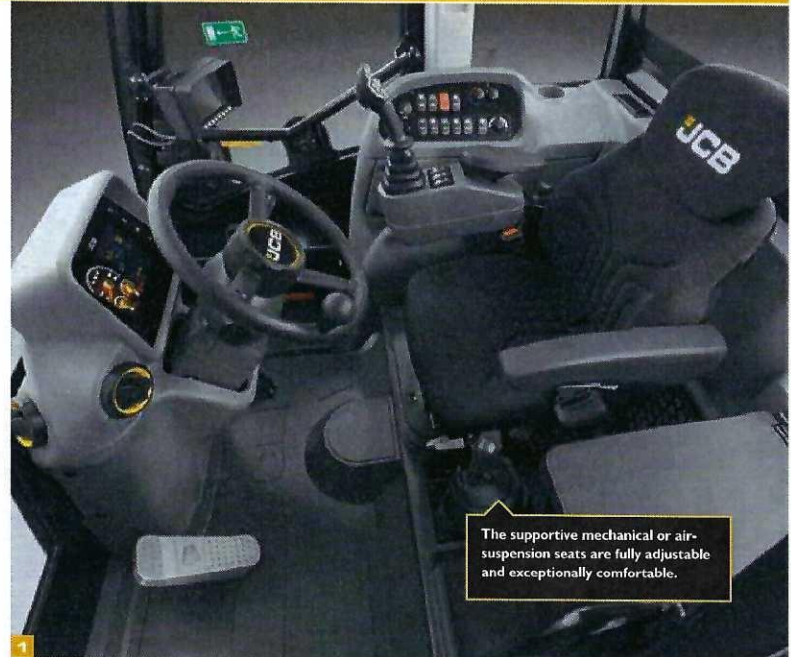
8 The foot brake features a selectable transmission dump for superb multi-functioning control and increased engine speeds during loading or rehandling.

9 The TM320's variable flow auxiliary hydraulics are easy to use and designed to maximize productivity and efficiency. This flow sharing system, with a variable flow piston pump, allows multiple functions to be performed simultaneously.



## IN CONTROL, IN COMFORT.

THE JCB TM320 IS EASY TO OPERATE—THANKS TO ERGONOMIC, INTUITIVE CONTROLS AND INTELLIGENT FEATURES—AND PROVIDE A COMFORTABLE WORKING ENVIRONMENT FOR INCREASED PRODUCTIVITY.



The supportive mechanical or air-suspension seats are fully adjustable and exceptionally comfortable.

### At your command.

- 1 From a high, centrally mounted driving position JCB TM320 operators enjoy the benefit of a low boom pivot point and large glass areas for an unobstructed 360-degree view.
- 2 Constant flow hydraulics are intuitive to use. With an in-cab flow rate display, hydraulics can be adjusted on the go.
- 3 Manual and automatic transmission modes provide the operator with control of transmission performance.
- 4 For fast and precise control, the TM320 are fitted with a fully-proportional, single-lever servo joystick control. Operators can change gears, speed and direction quickly and easily with one ergonomically-designed joystick.
- 5 The HVAC system allows operators to stay comfortable and focused for longer. A 3-speed fan heater is fitted as standard; optional air conditioning makes it even easier to set an ideal cab working temperature, regardless of outside weather conditions.



**Sitting comfortably.**

- 6** The cab is large and roomy, with plenty of convenient storage for work essentials and personal property.
- 7** Boom-end damping on lower and extend/retract reduces shock to the operator and the machine itself.
- 8** A color, LED dashboard relays useful operating information including in-cab daily checks, fuel consumption data, diesel exhaust fluid (DEF) levels and hydraulic flow rate.
- 9** Backlit switches ensure quick and accurate control recognition, even in the dark.



## SERVICING MADE EASY.

THE TM320 IS EASY TO MAINTAIN AND SERVICE, WHICH MEANS LESS DOWNTIME.

### Maintenance made easy.

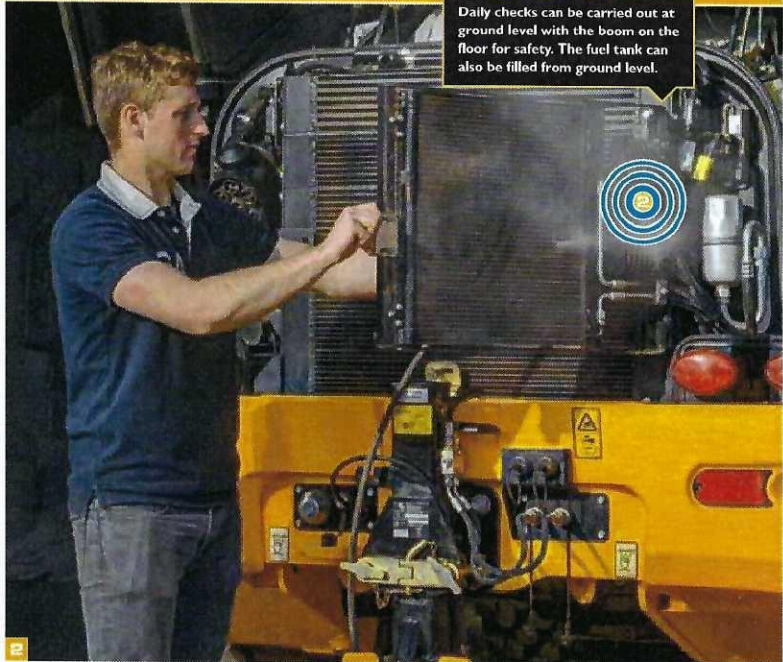
**1** The JCB TM320 use a sealed-for-life SCR system, requiring no costly diesel particulate filter (DPF) to comply with Tier 4 Final legislation.

The diesel and DEF (diesel exhaust fluid) tanks, as well as all daily check points, are easily accessible from ground level.

The wide-core, single-faced cooling pack delivers excellent performance. A cyclonic air cleaner reduces debris build-up in the air filter and an air intake scavenge system removes debris, extending service intervals. An automatic reversing fan is available to further simplify the clearing of debris.

**2** The TM320's wide-opening rear engine cover provides clear access to service points. Grease points are easily accessible, and no tools are required to access the battery.

**3** The TM320's self-lubricating boom wear pads and dry boom lubrication provide virtually maintenance-free operation. The use of graphite-impregnated bronze bushes throughout allows greasing intervals to be extended to 500 hours.

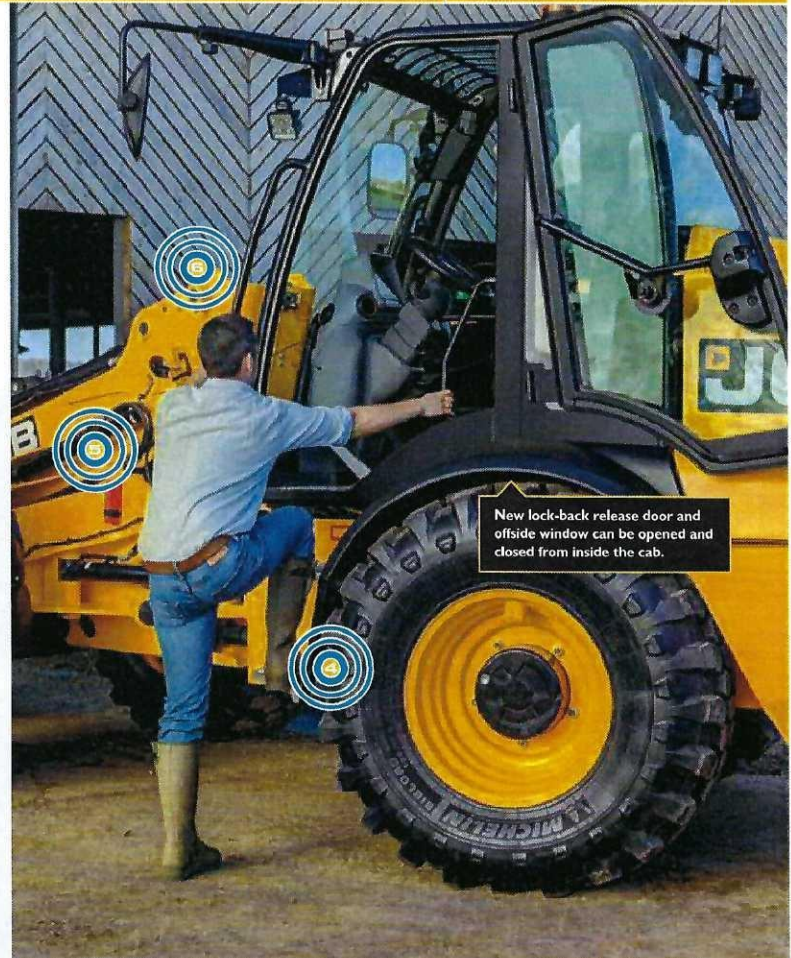
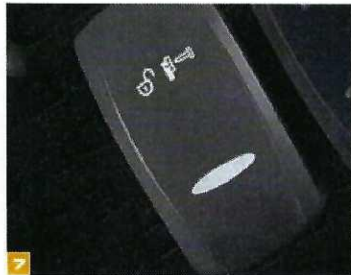


**Keeping you safe.**

- 4 Access steps are inclined and equally spaced, and well-positioned grab handles provide three points of contact at all times.
- 5 Hose burst check valves on the rams prevent collapse in the event of hose failure.
- 6 The low boom profile and low boom pivot make for superb forward visibility.

- 7 An in-cab, electronic, two-stage quick hitch isolation control protects against accidental release of attachments.

- 8 For real time vehicle tracking, the TM320 are equipped with JCB LiveLink telematics.



## A SMART INVESTMENT.

JCB MACHINES ARE RECOGNIZED AROUND THE WORLD FOR LOW OPERATING COSTS AND EXCEPTIONAL RESALE VALUES.



### EcoMAX saves you money.

**1** Innovative Clean Burn technology allows JCB engines to meet Tier 4 Final regulations without a diesel particulate filter (DPF) and therefore without the productivity and cost impacts of DPF regeneration and DPF replacement. Instead, the JCB engines in the TM320 use a sealed-for-life Selective Catalytic Reduction (SCR) system.

**2** The TM320 are equipped with torque converter locking in fourth, fifth and sixth gear for increased speed, quicker journey times and reduced fuel consumption.

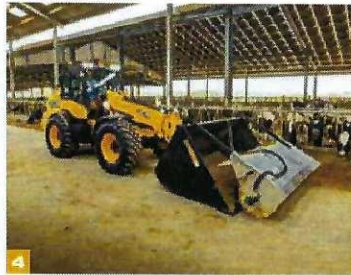


**3** By producing high power and torque at engine speeds as low as 1300–1400 RPM, the JCB EcoMAX engine provides fuel-efficient matching of transmission and hydraulics.

**4** The 125 hp (93 kW) EcoMAX engine fitted with a variable speed cooling fan or hydraulic reversing fan with manual override that automatically adjusts to ambient temperatures, for optimal fuel efficiency and reduced in-cab noise.

**5** High back-off power brakes reduce viscous drag during roading and rehandling, for improved fuel economy.

**6** The TM320's load-sensing hydraulics consume power only on demand, to reduce fuel consumption.



## LIVELINK, WORK SMARTER.

LIVELINK IS AN INNOVATIVE SOFTWARE SYSTEM THAT LETS YOU MANAGE YOUR JCB MACHINES REMOTELY FROM A COMPUTER, TABLET OR SMART PHONE.

**Productivity and cost benefits**—By providing information like idle time monitoring and machine fuel consumption, JCB Livelink helps reduce your fuel usage, saving money and improving productivity. Machine location information can help improve efficiency and possibly reduce insurance costs.

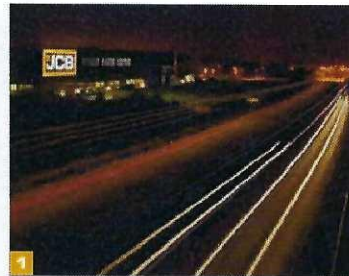


**Maintenance benefits**—Accurate hours monitoring, maintenance history records, critical machine alerts and service alerts for improved maintenance planning.

**Security benefits**—Real-time geofencing allows you to set operating zones, while curfew alerts let you know when your machinery is operated outside of predetermined times. Location information helps to plan and monitor the safe storage of your machine.

## VALUE ADDED.

WHATEVER YOU NEED AND WHEREVER YOU ARE, JCB'S DEPENDABLE NORTH AMERICAN DEALER NETWORK IS HERE TO MAKE SURE YOUR MACHINERY PERFORMS TO ITS FULL POTENTIAL.



**1** JCB Technical Support Service provides instant access to factory expertise, day or night. JCB's Finance team is always on hand to provide fast, flexible, competitive quotes.



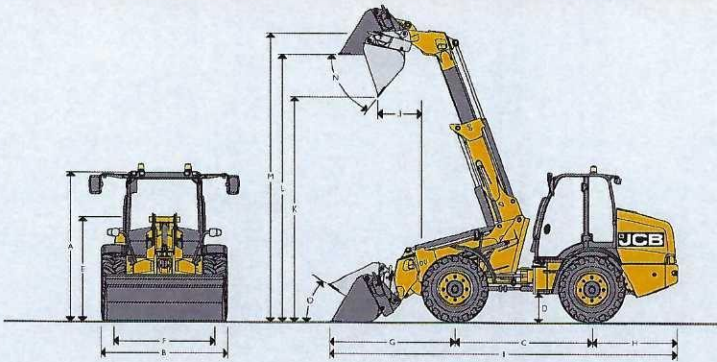
JCB Yellow Shield offers comprehensive extended warranties and service agreements, as well as service-only or repair and maintenance contracts. JCB maintenance teams offer competitive labor rates and no-obligation quotes.



**2** The global network of JCB Parts Centers is a model of efficiency. With 16 regional bases, we can deliver around 95 percent of all parts anywhere in the world. Our genuine JCB parts are designed to work in perfect harmony with your machine for optimum performance and productivity.

*Note: JCB LIVELINK and JCB ASSETCARE may not be available in your region, so please check with your local dealer.*

STATIC DIMENSIONS



STATIC DIMENSIONS

A	Overall height	ft-in (mm)	8-10 (2,703)
B	Overall width (over tires)	ft-in (mm)	7-9 (2,350)
C	Wheelbase	ft-in (mm)	8-4 (2,550)
D	Ground clearance	ft-in (mm)	1-7 (472)
E	Height to top of boom pivot	ft-in (mm)	6-0 (1,835)
F	Wheel track	ft-in (mm)	6-2 (1,870)
G	Axle to shovel toe plate	ft-in (mm)	5-4 (1,627)
H	Axle to counterweight face	ft-in (mm)	7-0 (2,143)
I	Total length*	ft-in (mm)	20-9 (6,322)
J	Dump reach	ft-in (mm)	3-1 (933)
K	Dump height	ft-in (mm)	14-10 (4,511)
L	Load over height	ft-in (mm)	17-1 (5,200)
M	Pin height	ft-in (mm)	17-7 (5,367)
N	Maximum dump angle	degrees	39
O	Roll back at carry	degrees	41
	Total length to front of hitch	ft-in (mm)	19-4 (5,886)
	Inside radius	ft-in (mm)	6-7 (2,001)
	Outside radius (edge of tire)	ft-in (mm)	14-3 (4,350)
	Outside radius (over shovel)	ft-in (mm)	15-2 (4,633)
	Articulation angle	degrees	± 43
	Operating weight	lb (kg)	18,122 (8,220)
	Front axle weight	lb (kg)	6,107 (2,770)
	Rear axle weight	lb (kg)	12,103 (5,490)
	Tyres used for specifications		Michelin XMCL 460/70R24
	Bucket used for specification		1.3 cyd (1.0 m <sup>3</sup> )
	Fluid used for specification		Oil

\*Please note total length: machine fitted with standard bucket – boom fully down, shovel crowded fully back.

ENGINE

Machine model	TM320	
Manufacturer	JCB	
Model	EcoMAX	
Capacity	ltr	4.4
Bore	mm	103
Stroke	mm	132
Aspiration	Turbocharged/charge cooled	
Number of cylinders	4	
Power rating		
Gross power to SAE J1995/ISO 14396	hp (kW)	125 (93) @ 2,200 RPM
Net power to J1349/EEC 80/12	hp (kW)	115 (86) @ 2,200 RPM
Torque rating		
Gross torque	ft lb (Nm)	405 (550) @ 1,500 RPM

TRANSMISSION

Machine model	TM320	
Type	Powershift	
Make	JCB	
Model	PS760 - 6 Speed	
Max travel speed	mph (kph)	24 (40)

AXLES

Machine model	TM320	
Type	Epicyclic hub reduction	
Make	JCB	
Overall axle ratio/ drop box ratio	13.71	
Chassis angle oscillation	degrees	± 10
Maximum travel speed	mph (kph)	24 (40)

BRAKES

Machine model	TM320	
Service brakes	In board oil immersed brakes	
Parking brake	Cable operated disc brake on transmissions output shaft	

NOISE AND VIBRATION

		Uncertainty	Measurement conditions
Noise at the operator station	LpA	73 dB +/- 1 dB	Determined in accordance with the test method defined in ISO 6396 and the dynamic test condition defined on 2000/14/EC.
Noise emission from the machine	LWA	107 dB +/- 1 dB	Guaranteed equivalent sound power (external noise) determined in accordance with the dynamic test conditions defined in 2000/14/EC.
Whole body vibration	m/s <sup>2</sup>	0.39 +/- 0.11 dB	ISO 2631-1:1997 normalized to an 8h reference period and based upon a test cycle comprising of loader work (soil).
Hand arm vibration	m/s <sup>2</sup>	< 2.5 N/A	ISO 5349:2001 dynamic test conditions.

**SPECIFICATION**

**TM320 ARTICULATED TELESCOPIC HANDLER**

**SERVICE FILL CAPACITIES**

Machine model		TM320
Hydraulic tank & transmission	gal (ltr)	25.6 (97)
Fuel tank	gal (ltr)	42.3 (160)
Engine oil sump	gal (ltr)	3.7 (14)
Axle oil (front) including hubs	gal (ltr)	5.3 (20)
Axle oil (rear) including hubs	gal (ltr)	5.3 (20)
Drop box	gal (ltr)	0.3 (1.3)
DEF	gal (ltr)	7.7 (29)

**HYDRAULICS**

Machine model		TM320
Pump type		Variable displacement piston pump
Pump maximum flow	gpm (lpm)	37 (140)
Pump maximum pressure	psi (bar)	3,336 (230)
<b>Hydraulic cycle times</b>		
Boom raise	seconds	5.8
Boom lower	seconds	6.7
Extend	seconds	4.1
Retract	seconds	3.1
Bucket dump	seconds	3.1
Bucket crowd	seconds	3.3
Total cycle time	seconds	26.1

**ELECTRICAL SYSTEM**

Machine model		TM320
System voltage	Volt	12
Alternator output	Amp Hour	150
Battery capacity	Amp Hour	120

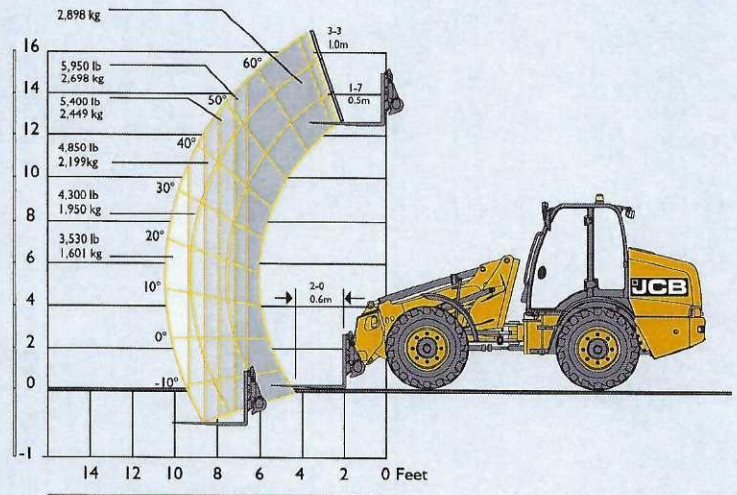
**TIRE OPTIONS**

Manufacturer	Size	Type	Applica-tion	Dimensional changes	
				Overall height in (mm)	Width over tyres in (mm)
Michelin	460/70R24	XMCL	Ag	0 (0)	0 (0)
Michelin	500/70R24	XMCL	Ag	0.9 (24)	1.5 (38)
Michelin	460/70R24	BIBLOAD	AG/EM	-0.2 (-4)	0 (0)
Michelin	500/70R24	BIBLOAD	AG/EM	0.7 (19)	2.1 (54)

**LOADER PERFORMANCE**

Machine model		TM320
100% straight tipping load	lb (kg)	10,459 (4,744)
100% full turn tipping load	lb (kg)	8,182 (3,711)
80% full turn tipping load	lb (kg)	6,546 (2,969)
60% full turn tipping load	lb (kg)	4,909 (2,226)

Straight and Full Turn Tipping Load with forks @ 24 inch L.C. and direct mount to Qfit carriage to EN474 (ISO 14397)



STANDARD/OPTIONAL EQUIPMENT

	TM320		TM320		TM320
<b>ENGINE AND COOLING</b>		<b>CAB</b>		<b>CHASSIS AND BODYWORK</b>	
125 hp JCB engine	•	ROPS/FOPS safety structure	•	Articulated steering	•
Cyclonic air filter	•	Laminated screen	•	Center pivot oscillation	•
Air intake scavenge system	•	Fully adjustable mechanical seat	•	Plastic front and rear fenders	•
Widecore cooling pack	•	Air suspension seat	+	Fixed bottom step	•
Auto reversing fan	+	Interior light	•	Full width rear counterweight	•
		Tilt and telescopic steering column	•	Recovery hitch	•
<b>TRANSMISSION / AXLES</b>		Adjustable joystick control console and armrest	•	Prop shaft guard	•
6 speed Powershift transmission	•	Front and rear wash / wipe	•	Deluxe exterior mirrors	•
Lock-up torque converter in gears 4 - 6	•	3 speed heater fan	•	Hydraulic tow hitch	+
24 mph travel speed	•	Air conditioning	+		
Transmissions disconnect on footbrake	•	RH opening window with lock back	•	<b>LOADER</b>	
Forward / reverse controls on joystick	•	LH opening door with door lock back	•	Center mounted single stage telescopic boom	•
Column mounted transmission selector	•	Single lever joystick controls	•	Parallel lift	•
In board oil immersed disc brakes	•	Loader control isolator	•	End damping on boom lower, extend and retract	•
Limited slip differentials front	+	External rear view mirrors	•	JCB Q-fit carriage	+
		Front and roof screen blinds	•	Electrical in cab quickhitch pin isolation	•
<b>HYDRAULICS</b>		Additional storage box	+		
Servo controls	•				
Flow sharing hydraulics	•	<b>ELECTRICAL</b>		<b>STANDARD</b>	•
Proportional boom and auxiliary controls	•	Road lights front and rear	•	<b>OPTIONAL</b>	+
Adjustable constant flow hydraulics	•	Reverse lights	•	<b>NOT AVAILABLE</b>	×
Variable displacement piston pump	•	Battery isolator	•		
Priority steer valve	•	Direction indicators	•		
Hose burst check valves	•	Twin beacons	+		
JCB Smoothride system	+	Front and rear worklights	+		
		Boom worklights	+		
		Reverse foglight kit	+		
		LiveLink telematics	•		
		12 V in-cab power socket	•		

NB. Regional variations may apply to standard and optional equipment



ONE COMPANY, OVER 300 MACHINES.

Your nearest JCB dealer

**Articulated Telescopic Handler TM320**

Gross power: TM320: 125 hp (93 kW) Lift capacity: 6,390 lb (2,898 kg), Lift height: 17'1" (5,200 mm)

**JCB North America**

2000 Bamford Blvd., Pooler, Georgia, 31322 Tel: (912) 447-2000

Download the very latest information on this product range at [www.jcb.com](http://www.jcb.com)

JCB Inc. All rights reserved. No part of this publication may be reproduced, stored in a retrieval system, or transmitted in any form or by any other means, electronic, mechanical, photocopying or otherwise, without prior permission from JCB Inc. All references in this publication to operating weights, sizes, capacities and other performance measurements are provided for guidance only and may vary dependent upon the exact specification of machine. They should not therefore be relied upon in relation to suitability for a particular application. Guidance and advice should always be sought from your JCB Dealer. JCB reserves the right to change specifications without notice. Illustrations and specifications shown may include optional equipment and accessories. The JCB logo is a registered trademark of J.C. Bamford Excavators Ltd.

9999/5676 en-CB 02/17 Issue 3 (T4F) DWUSA 4639

[f /JCBNA](https://www.facebook.com/JCBNA) [t /JCBNA](https://twitter.com/JCBNA) [y /JCBNORTHAMERICA](https://www.youtube.com/channel/UCJCBNA)

