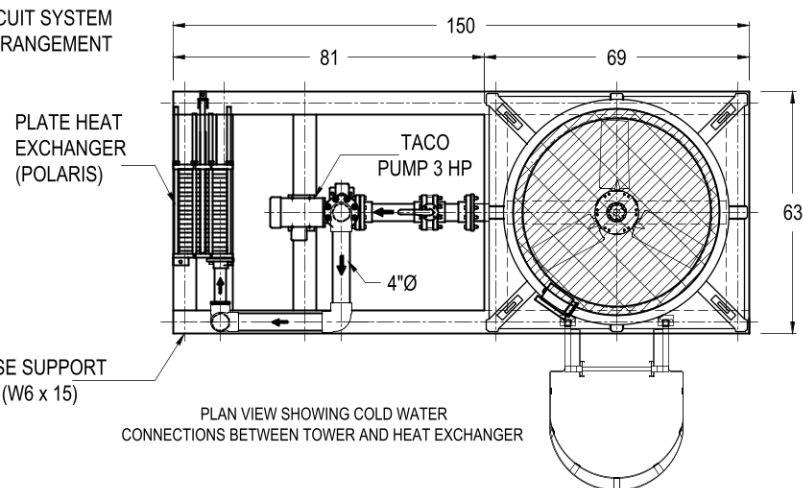
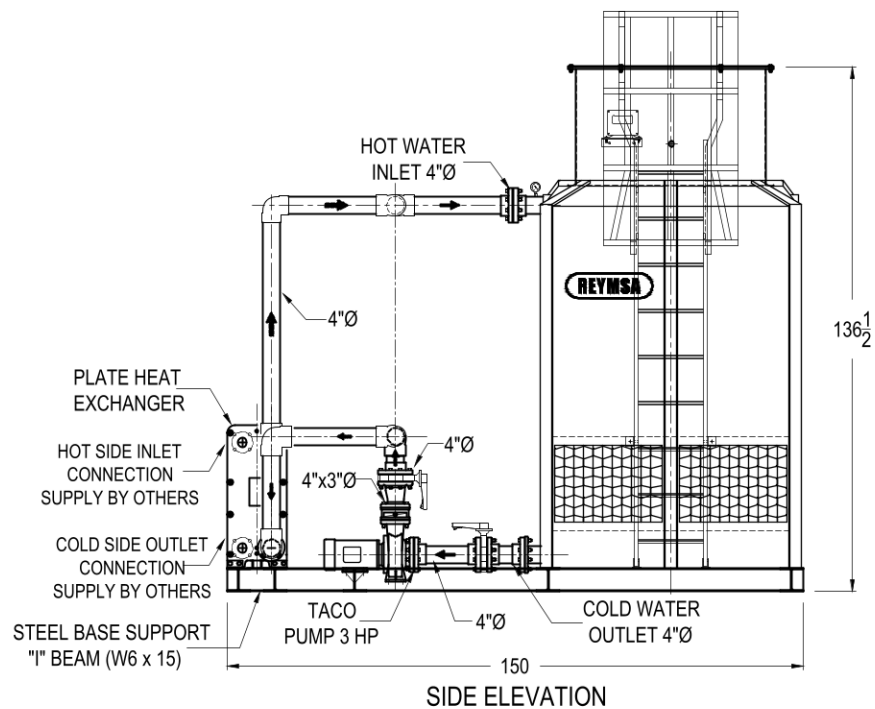


PLAN VIEW SHOWING HOT WATER CONNECTIONS BETWEEN TOWER AND HEAT EXCHANGER

CLOSED CIRCUIT SYSTEM GENERAL ARRANGEMENT



PLAN VIEW SHOWING COLD WATER CONNECTIONS BETWEEN TOWER AND HEAT EXCHANGER



ESTIMATED:
SHIPPING WEIGHT : 3,880 LB
OPERATING WEIGHT: 5,560 LB
- DO NOT USE FOR CONSTRUCTION, MAY VARY
- LADDER MUST BE SUPPORTED ON A LEVEL SURFACE

PRODUCT DRAWING

CT RTU-505105-A
FAN TYPE: STANDARD
MOTOR 5 HP, 850 RPM
PUMP : C13007D- 4x3x7- 3 HP_200 GPM
PHE: A19A-IG10-127-TMTL56_200 GPM

REYMSA COOLING TOWERS, INC.

www.reymssa.com

PROJECT:

APPROVAL BY:

Date: September 14, 2021

Revised: MT
Dwg. Scale: None
Dimensions: Inches

Dwg. No: CCS RTU-505105-A_Pump&PHE 1/2

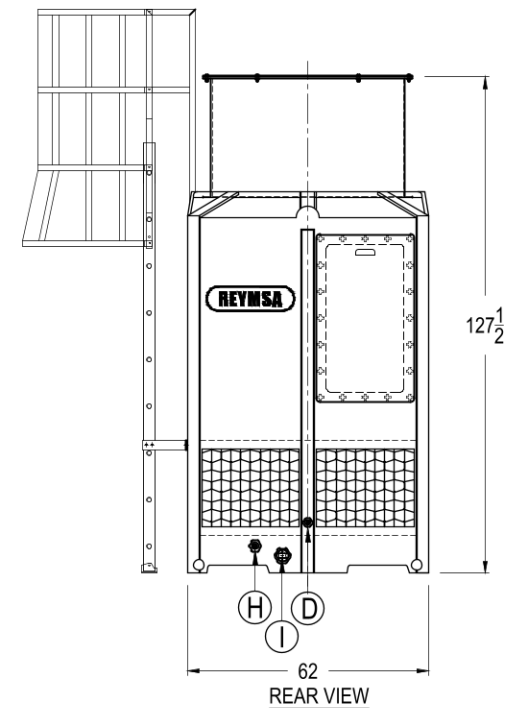
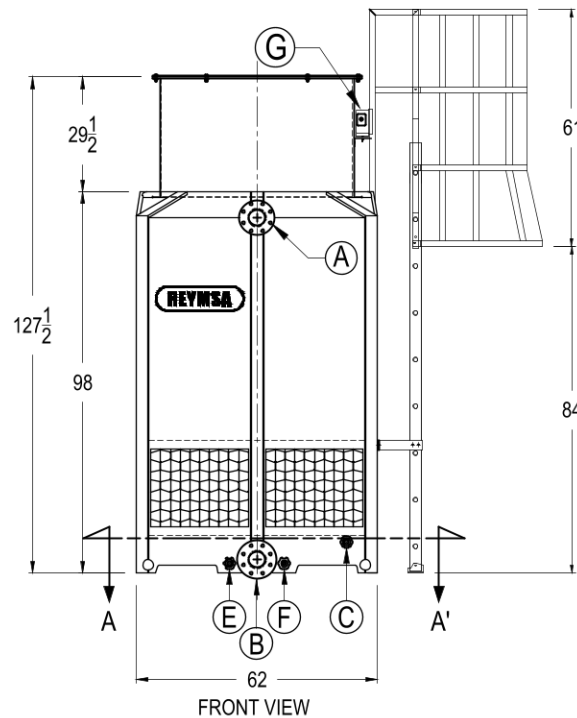
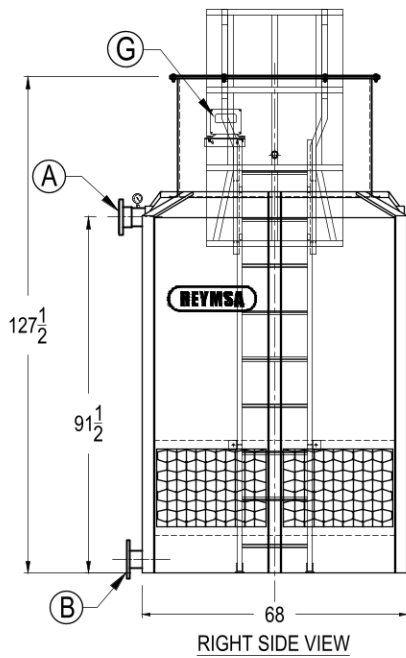
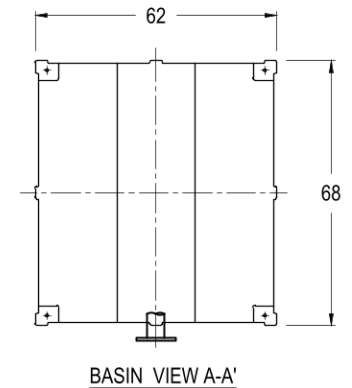
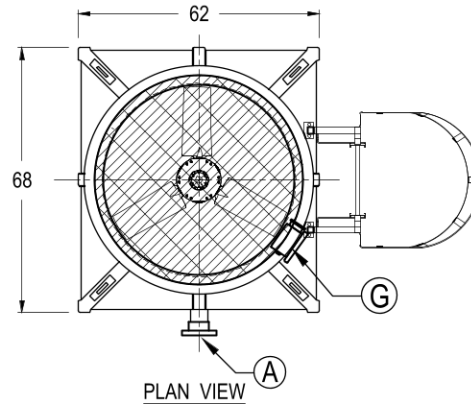


CONNECTION DIAMETER

(A) Hot Water Inlet:	1 FLANGE:	4"Ø
(B) Cold Water Outlet:	1 FLANGE:	4"Ø
(C) Overflow:	1 FPT (Female Pipe Thread):	1"Ø
(D) Water make-up:	1 FPT (Female Pipe Thread):	1/2"Ø
(E) Drain:	1 FPT (Female Pipe Thread):	1"Ø
(F) Purge:	1 FPT (Female Pipe Thread):	3/4"Ø
(G) Vibration Cut-Off Switch:	1 Per Fan Duct	
(H) Sensor Heater:	1 FPT (Female Pipe Thread):	1/2"Ø
(I) Basin Heater:	1 FPT (Female Pipe Thread):	2"Ø

NOTES:

- DO NOT USE FOR CONSTRUCTION, MAY VARY
- LADDER MUST BE SUPPORTED ON A LEVEL SURFACE



PRODUCT DRAWING

CT MODEL RTU-505105-A
 FAN TYPE: STANDARD
 (1) MOTOR 5 HP, 850 RPM
 SHIPPING WEIGHT : 1,737 Lb
 OPERATING WEIGHT : 3,074 Lb
 BASIN CAPACITY: 111 Gal

REYMSA COOLING TOWERS, INC.

www.reymssa.com

PROJECT:

APPROVAL BY:

Date: September 14, 2021

Revised: MT
 Dwg. Scale: None
 Dimensions: Inches

Dwg. No: CCS RTU-505105-A_Pump&PHE 2/2

