

CITY OF TEXAS CITY  
CITY COMMISSION REDISTRICTING WORKSHOP

AGENDA

JULY 27, 2022 - 3:00 P.M.

KENNETH T. NUNN COUNCIL ROOM - CITY HALL  
1801 9th Ave. N.  
Texas City, TX 77590

PLEASE NOTE: Public comments and matters from the floor are generally limited to 3 minutes in length. If you would like to request to speak, please do so in advance of the meeting by filling out a Request To Address Commission form. All in attendance are required to remove hats and/or sunglasses (dark glasses) during meetings and to also silence all cell phones and electronic devices.

- (1) ROLL CALL
  
- (2) PRESENTATION AND DISCUSSION LED BY BRICKERSTAFF HEATH DELGADO ACOSTA LLP CONSULTANT.
  - (a) Conduct First Drawing Workshop to discuss City of Texas City, District boundaries.
  
- (3) PUBLIC COMMENTS
  
- (4) ADJOURNMENT

NOTICE: The City of Texas City will furnish free transportation to handicapped individuals via a 4-door sedan for anyone wishing to attend the City Commission meetings. Call 948-3111, City Secretary's Office before noon on Monday preceding the meeting to make arrangements.

I, THE UNDERSIGNED AUTHORITY, DO HEREBY CERTIFY THAT THIS NOTICE OF MEETING WAS POSTED ON THE BULLETIN BOARDS AT CITY HALL, 1801 9TH AVENUE NORTH, TEXAS CITY, TEXAS, AT A PLACE CONVENIENT AND READILY ACCESSIBLE TO THE GENERAL PUBLIC AND ON THE CITY'S WEBSITE ON JULY 22, 2022, PRIOR TO 3:00 P.M. AND REMAINED SO POSTED CONTINUOUSLY FOR AT LEAST 72 HOURS PRECEDING THE SCHEDULED TIME OF SAID MEETING.

---

RHOMARI LEIGH  
CITY SECRETARY

## **CITY COMMISSION WORKSHOP**

(2) (a)

**Meeting Date:** 07/27/2022

Redistricting Discussion

**Submitted For:** Jon Branson, Management Services

**Submitted By:** Jon Branson, Management Services

**Department:** Management Services

---

### **Information**

#### **ACTION REQUEST**

Conduct First Drawing Workshop to discuss City of Texas City, District boundaries.

#### **BACKGROUND (Brief Summary)**

On May 18, 2022, Mr. Bob Heath of Bickerstaff Heath Delgado Acosta LLP provided a report to the Commission on the Initial Assessment (please see attached) of the City of Texas City's need to redistrict. The purpose of the assessment was to determine the need to redistrict as result of the 2020 Census. Due to the increase in population in Texas City and in accordance with the 2020 Census, the City of Texas City needs to redistrict. Development elements of redistricting plan discussed with the City Commission included the following:

- A. Conduct an Initial Assessment
- B. Adopt plan criteria, guidelines
- C. Develop illustrative plan (s)
- D. Receive public comment/conduct public hearing (s)
- E. Analyze public comments
- R. Adopt final plan
- G. Implementation of plan

Plan Criteria/guidelines discussed with the Commission when undertaking redistricting included the following:

- Utilize identifiable boundaries
- Maintain communities of interest & neighborhoods
- Use whole voting precincts, if possible
- Base plan on existing districts
- Adopting districts of relatively equal size
- Drawing districts that are compact and contiguous
- Keeping existing incumbents in their districts
- Narrowly tailoring plan to comply with the Voting Rights Act

Based on the aforementioned discussion the next step in the process is to conduct the first drawing Workshop.

#### **RECOMMENDATION**

Conduct First Drawing Workshop.

---

**Fiscal Impact**

**Attachments**

Initial Assessment

Initial Assessment

---

# City of Texas City 2021 Redistricting

## Initial Assessment

**BICKERSTAFF HEATH DELGADO ACOSTA LLP**

3711 S. MoPac Expressway  
Building One, Suite 300  
Austin, Texas 78746  
(512) 472-8021

[www.bickerstaff.com](http://www.bickerstaff.com)

# REDISTRICTING

## Applicable Law

### Three Principles, plus

“One person – one vote”  
(equal population)

Voting Rights Act § 2  
(nondiscrimination)

*Shaw v. Reno*  
(limits use of race)

**Plus, as diagnostic tool:**  
Voting Rights Act § 5  
(retrogression)

# Redistricting

## One Person - One Vote

§ U.S. Constitution – single-member districts must have *approximately equal populations*

§ Rule of thumb: **total deviation < 10%**

- Compare most populous and least populous districts to “ideal”-sized district
- Add both departures from ideal together

<u>District</u>	<u>Ideal district</u>	<u>District total pop.</u>	<u>Difference</u>	<u>Deviation</u>
A	10,000	11,000	1000	+ 10.0 percent
B	10,000	10,750	750	+ 7.5 percent
C	10,000	10,250	250	+ 2.5 percent
D	10,000	8,000	- 2000	- 20.0 percent
<hr/>				
Totals:	40,000	40,000	net= 0	net= 0 percent

Total maximum deviation = difference between most populous and least populous districts = 10 percent + 20 percent = 30 percent.

## Example Deviation Calculation

# Available Census Data

## PL94-171 File

- n “Census block” level
- n Total population
- n VAP  
(voting age  
population)
- n Race
- n Hispanic origin



# What Population Do You Use?

## Total Population

- To determine one person - one vote

## VAP

(Voting Age Population)

- To measure voting rights issues

## Section 2 of the Voting Rights Act

- No discrimination on basis of race or language minority status
- Generally, avoid *cracking or packing*
- *Cracking or fracturing* is dividing minority voters to fragment their voting power.
- *Packing* is concentrating minority voters when dividing them would permit the group to elect their candidates of choice in more than one district
- Other practices can also violate Section 2

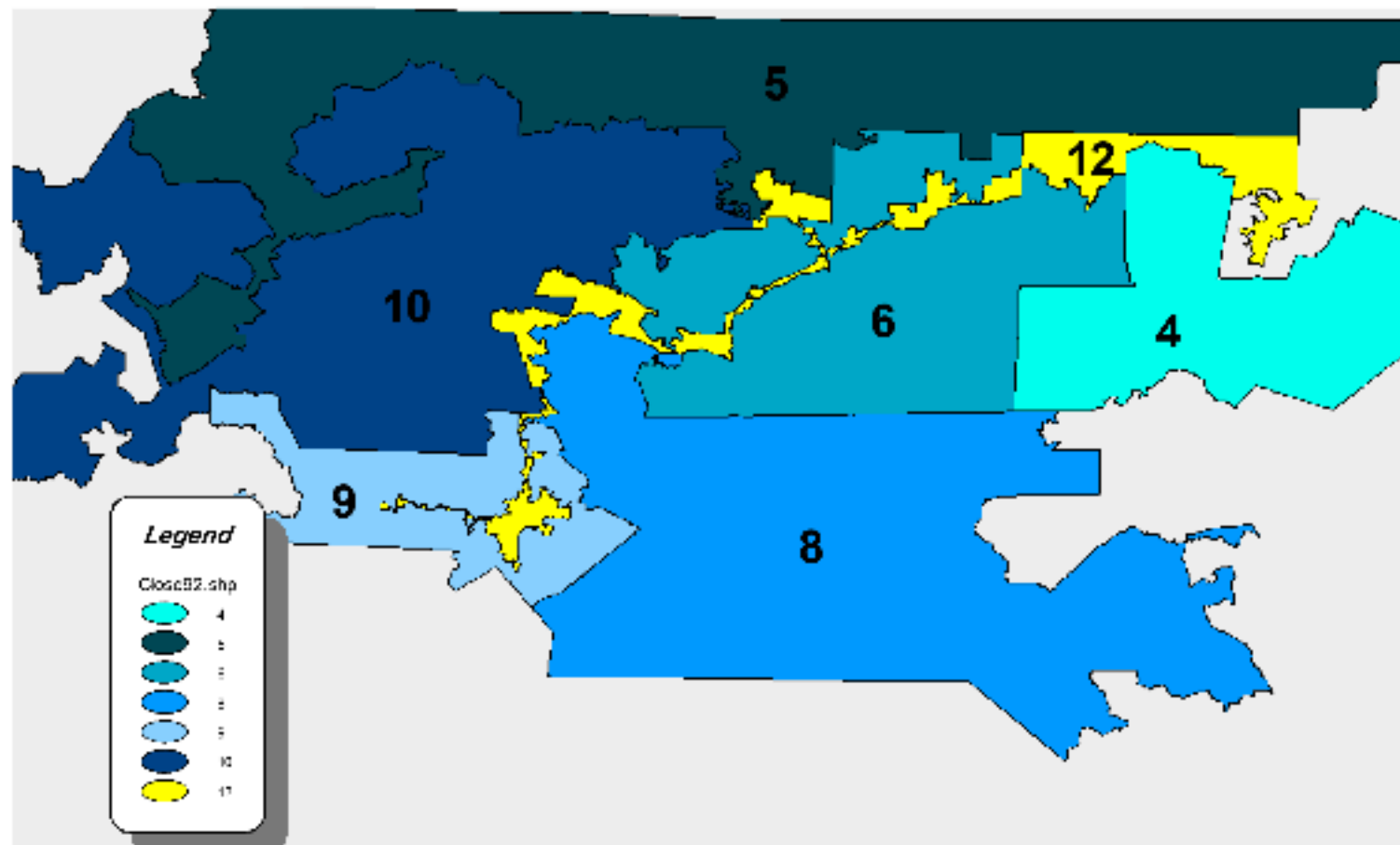
# 14th Amendment (*Shaw v. Reno*)

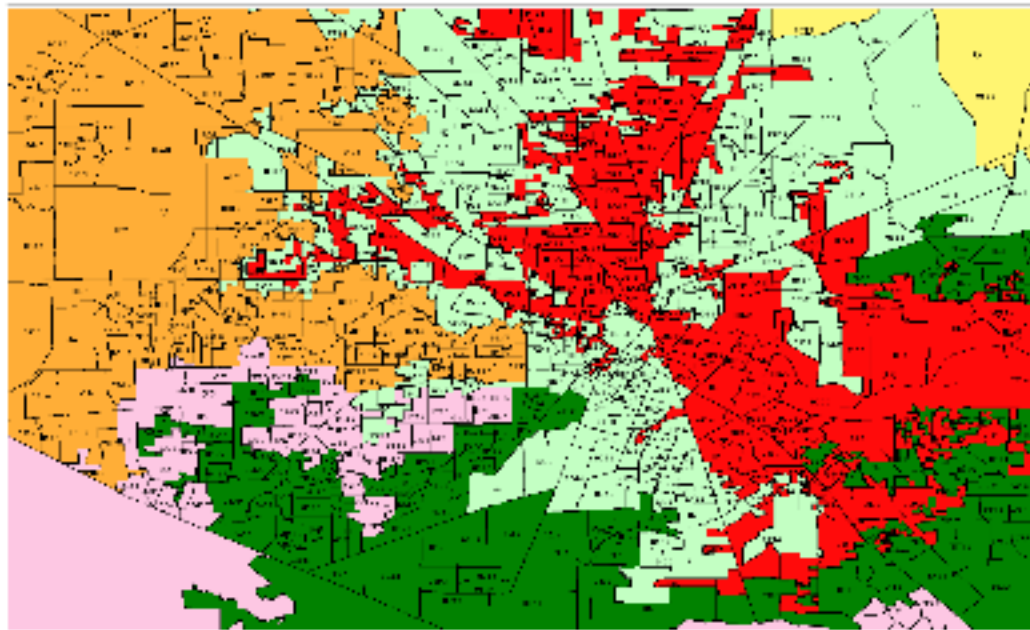
Limits race-based decision making, including redistricting

Was race the predominant consideration in drawing a redistricting plan?

If so, is the plan a *narrowly tailored* means of addressing a *compelling governmental interest*?

## CLOSE UP OF NORTH CAROLINA 1992 PLAN A



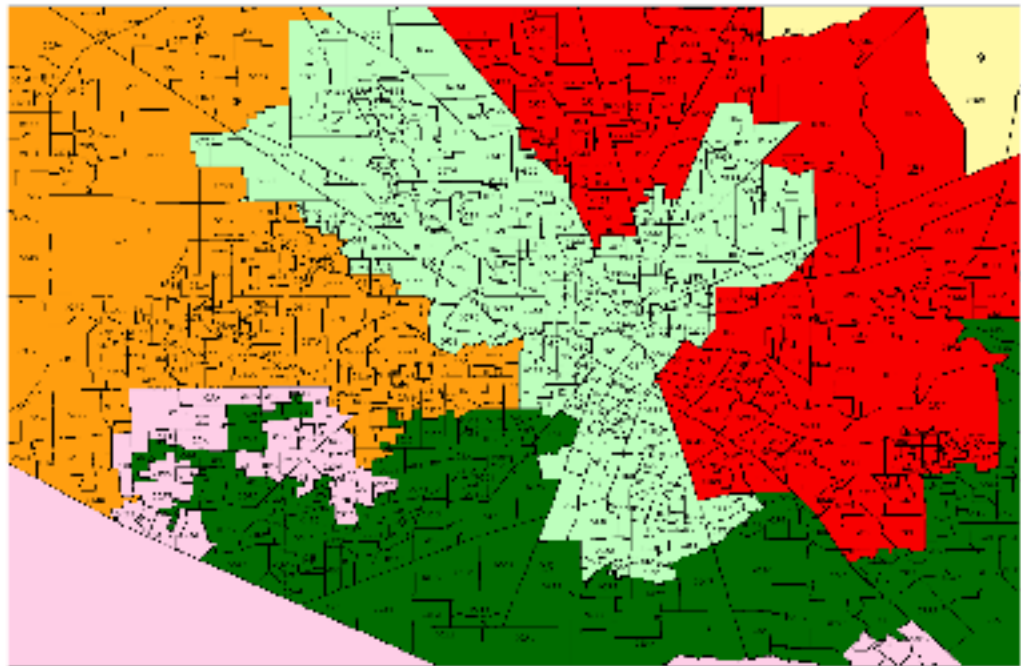


Central Harris County  
PLAN 1597

*Bush v. Vera*

AFTER

BEFORE



Central Harris County  
PLAN 766

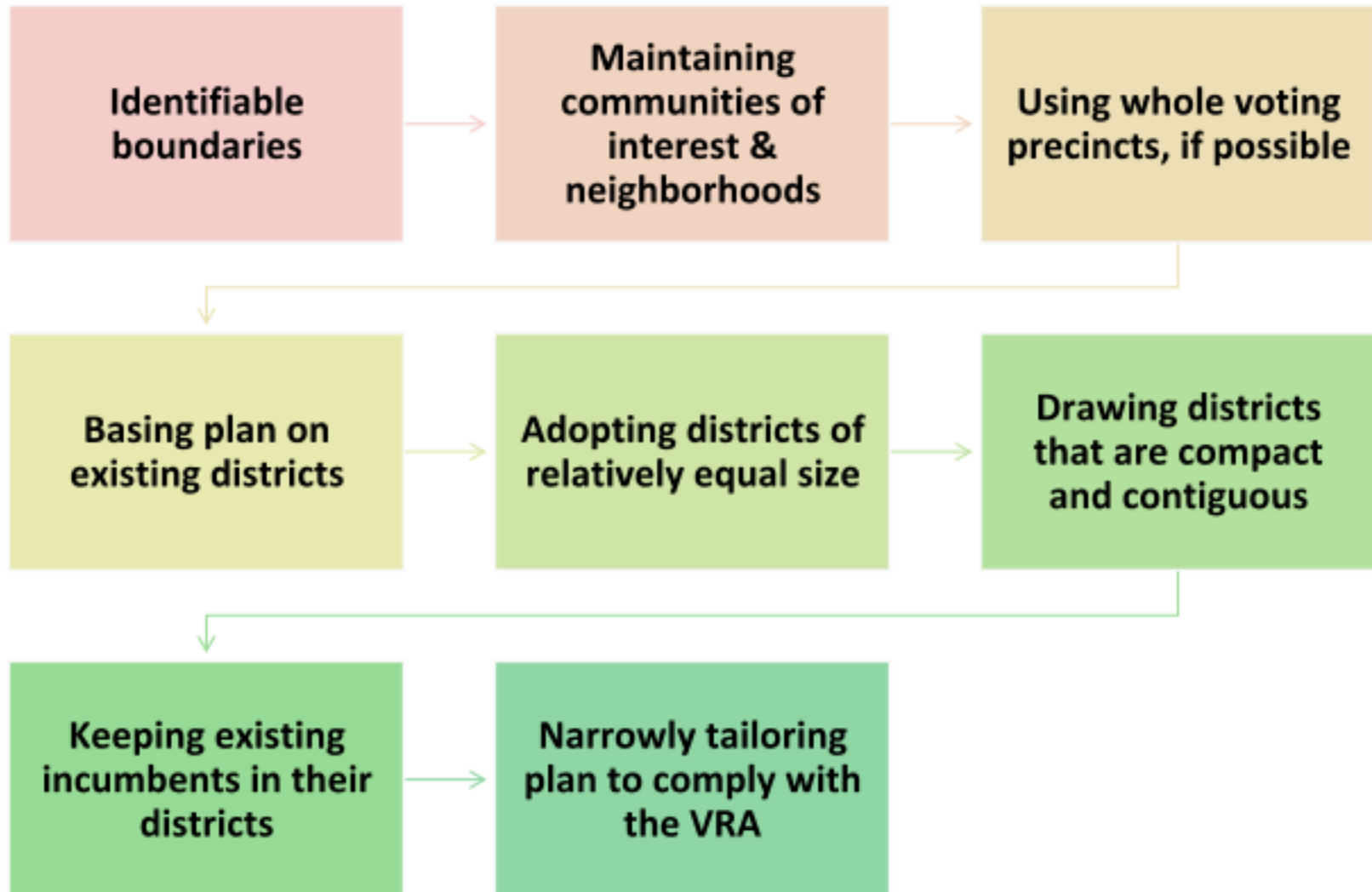
# Redistricting Standards under Shaw-Reno Line of Cases

- § Usually, race may not be the predominant factor to the subordination of traditional districting principles
- § But it is OK to be aware of race and to consider race *to satisfy Section 2 and Section 5*
- § To “narrowly tailor,” use race no more than necessary
- § Bizarrely-shaped districts not unconstitutional per se
  - Bizarre shape may be evidence that race predominated

# Section 5 of the Voting Rights Act

- § Preclearance no longer required (*Shelby County v. Holder* (2013))
- § Section 5 standard is “retrogression”
  - § Are minorities worse off under the new system?
  - § Still a useful diagnostic tool to identify potential Section 2 issues
- § No discriminatory purpose or effect

# Adopt Criteria



# Steps To Balancing Conflicting Legal Obligations In Redistricting

**Plan ahead**

- Build a record

**Be Aware**

- Of legal obligations and responsibilities

**Adopt**

- Criteria that reflect traditional redistricting principles, including consideration of race to the extent required to meet obligations under the Voting Rights Act

**Pay Attention**

# Steps To Balancing Conflicting Legal Obligations In Redistricting



Analyze the final plan in terms of how well it conforms to the adopted criteria



Make sure the analysis is considered by the City Council before plan adoption



Avoid districts that are not compact

# Plan Development Elements

Initial Assessment

Adopt plan criteria, guidelines

Develop illustrative plan(s)

Public comment / hearing

Analyze comments

Adopt final plan

Implementation



## **Proposed Redistricting Time Line**

TBD - Present Initial Assessment

TBD - First Drawing Workshop

TBD - Second Drawing Workshop

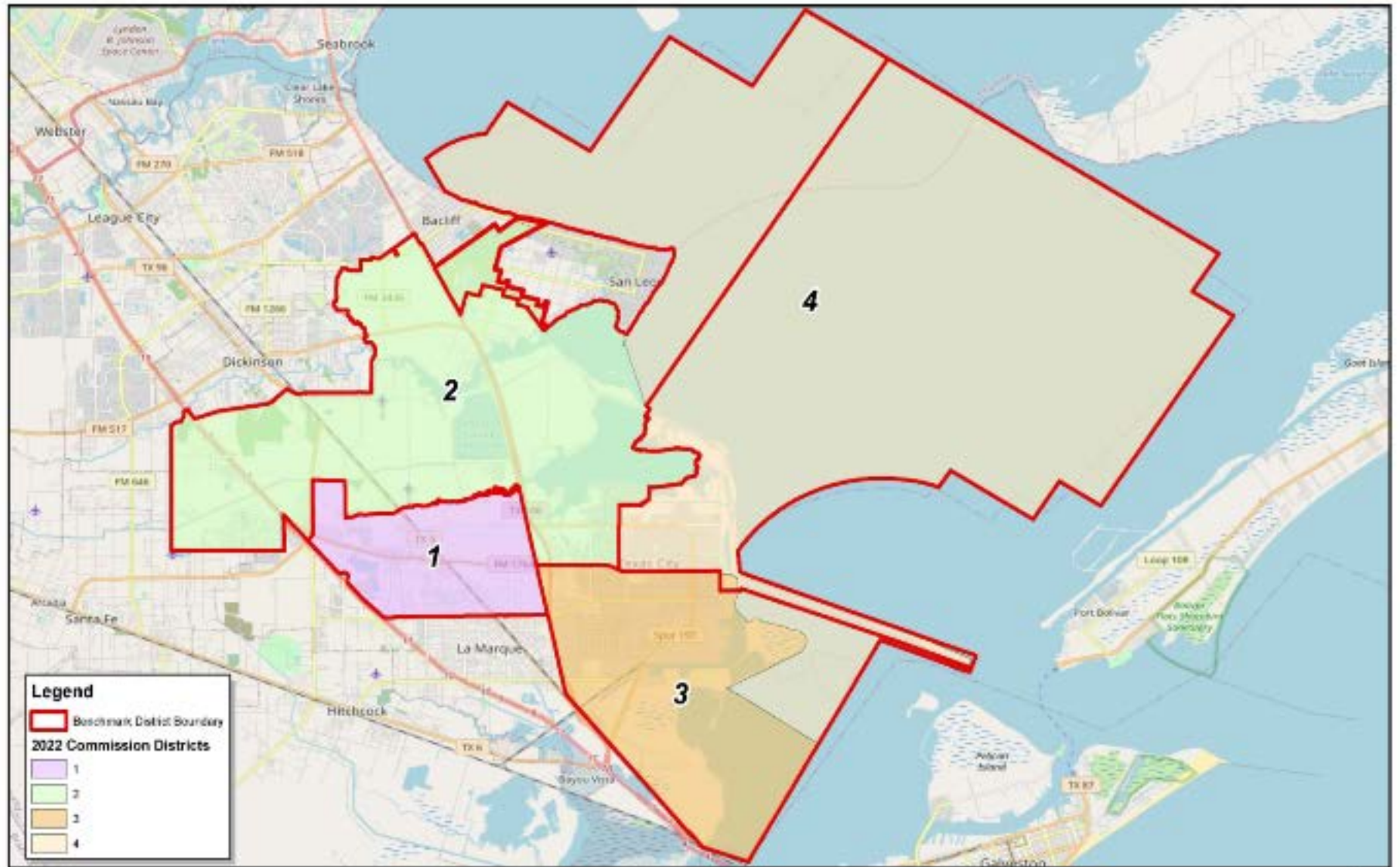
TBD - Final Adoption



# City of Texas City

## 2011 Benchmark with 2020 Census Data

# Current City Commission Districts



**Legend**

- Benchmark District Boundary
- 2022 Commission Districts
- 1
- 2
- 3
- 4



## Texas City Commission Districts 2022 Initial Assessment

Created: 3/31/2022

Differences between the Benchmark Boundary and the 2021 Census Geography.

© 2022 Bickerstaff Heath Delgado Acosta LLP  
Data Source: Roads, Water and other  
features obtained from the 2020  
Tigerline files, U.S. Census Bureau



**City of Texas City**  
**Overall Deviation For Current City Commission Districts**  
**Using 2020 Census Data**



**Texas City Commission Districts - 2022 Initial Assessment**

**Demographics Report - Summary 2020 Census Total Population**

Plan Last Edited on: 3/30/2022 5:27:03 PM

District	Persons	Ideal Size	Deviation	Hispanic % of Total Population	Non-Hispanic White % of Total Population	Non-Hispanic Black % of Total Population	Non-Hispanic Asian % of Total Population	Non-Hispanic Other % of Total Population
<b>1</b>	15,087	13,020	15.88%	22.59%	23.88%	48.21%	1.28%	4.12%
<b>2</b>	14,220	13,020	9.22%	30.41%	44.32%	18.87%	2.23%	4.16%
<b>3</b>	10,521	13,020	-19.19%	40.18%	30.94%	24.95%	0.55%	3.38%
<b>4</b>	12,250	13,020	-5.91%	33.94%	48.02%	12.67%	1.03%	4.33%
<b>TOTAL:</b>	52,078			30.95%	36.57%	27.14%	1.33%	4.03%

**Ideal Size: 52078 / 4 = 13020**

**Total Population: 52,078**

**Overall Deviation: 35.07%**

*Some percentages may be subject to rounding errors.*

**City of Texas City**  
**Overall Deviation For Current City Commission Districts**  
**Using 2020 Census Data**



**Texas City Commission Districts - 2022 Initial Assessment**

**Demographics Report - Summary 2020 Census Voting Age Population**

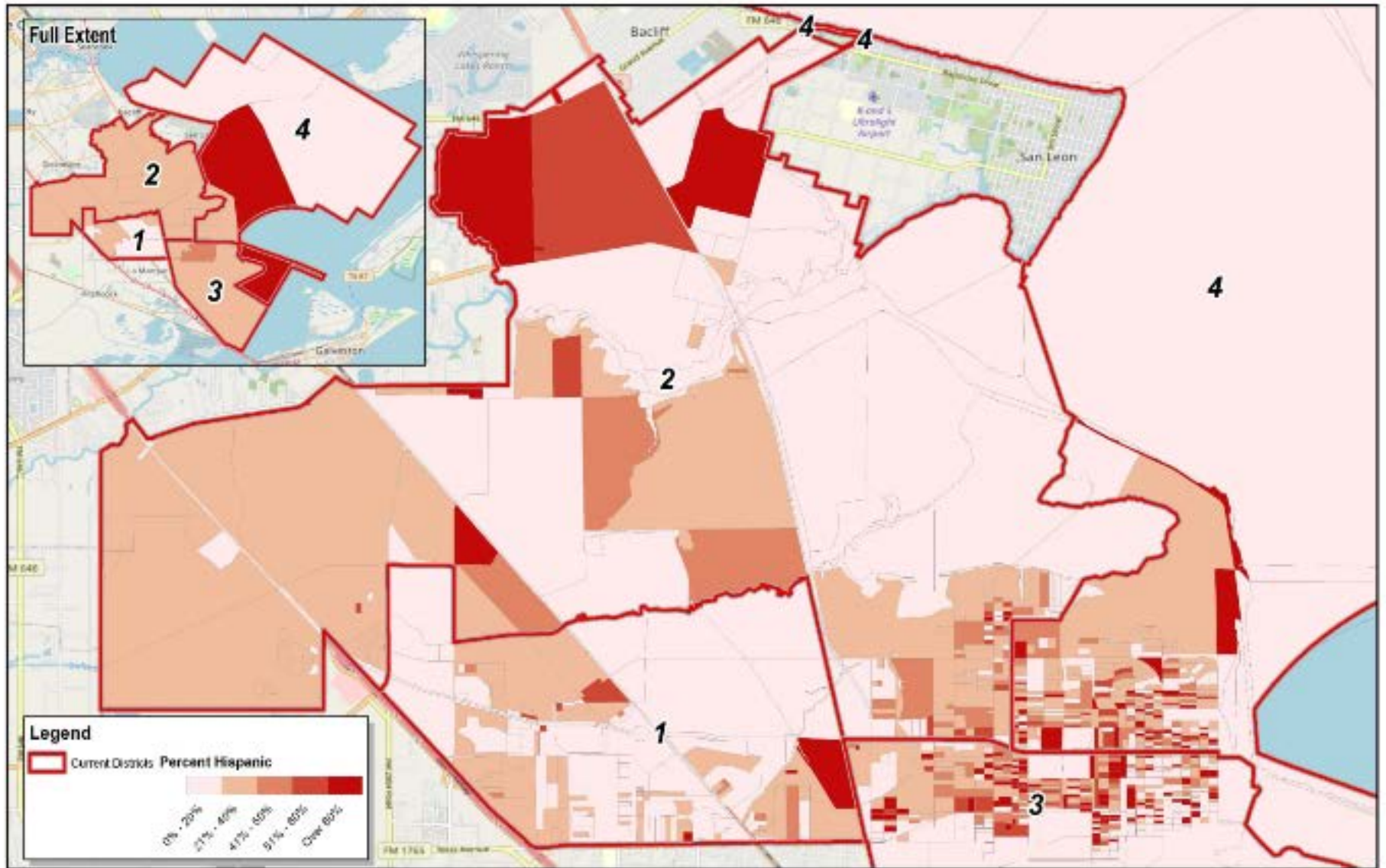
Plan Last Edited on: 3/30/2022 5:27:03 PM

District	Total VAP*		Hispanic % of Total VAP	Non-Hispanic Anglo % of Total VAP	Non-Hispanic Black % of Total VAP	Non-Hispanic Asian % of Total VAP	Non-Hispanic Other % of Total VAP
<b>1</b>	<b>11,279</b>		19.83%	26.61%	48.44%	1.38%	3.83%
<b>2</b>	<b>11,011</b>		27.45%	48.15%	18.46%	2.35%	3.58%
<b>3</b>	<b>7,694</b>		37.31%	34.05%	25.23%	0.61%	2.79%
<b>4</b>	<b>9,262</b>		30.66%	52.87%	11.62%	1.13%	3.71%
	<b>39,246</b>		<b>27.95%</b>	<b>40.31%</b>	<b>26.79%</b>	<b>1.44%</b>	<b>3.53%</b>

\* VAP - Voting Age Population

*Some percentages may be subject to rounding errors.*

# Thematic Maps



Texas City Commission Districts - 2022 Initial Assessment  
Percent Hispanic by 2020 Census Block

© 2022 Bkkrstaf Heath Delgado Acosta LLP  
Data Source: Roads, Water and other  
features obtained from the 2020  
Tiger/line files, U.S. Census Bureau

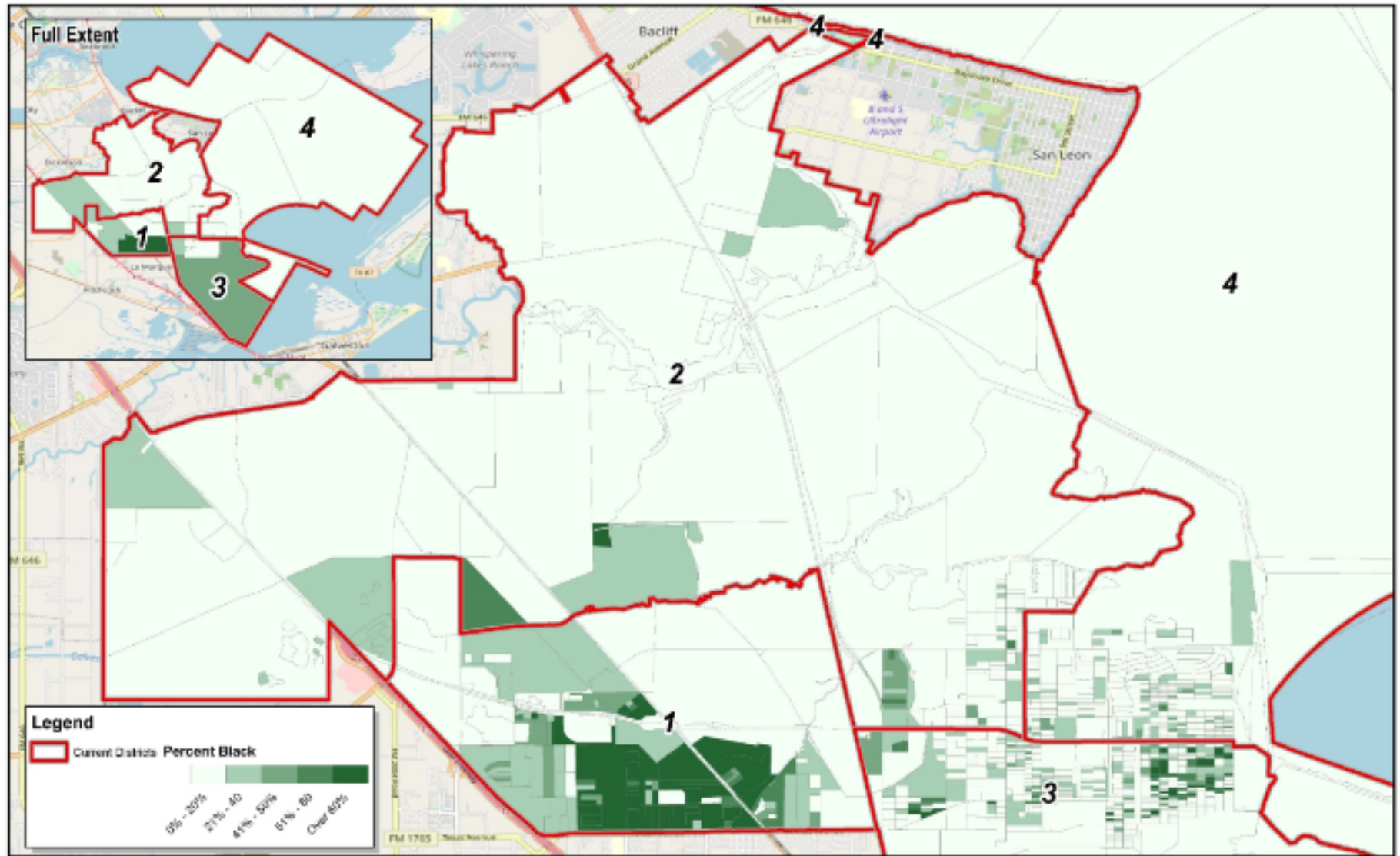


0 0.5 1 2 Miles

Created: 3/31/2022

Differences between the Beachmax Boundary and the 2021 Census Geography.

# Thematic Maps



Texas City Commission Districts - 2022 Initial Assessment  
Percent Black by 2020 Census Block

© 2022 Bokenstiff Heath Delgado Acosta LLP  
Data Source: Roads, Water and other  
features obtained from the 2000  
Tigerline files, U.S. Census Bureau



0 0.5 1 2 Miles

Created: 3/31/2022

Differences between the Benchmark Boundary and the 2021 Census Geography.

# City of Texas City 2021 Redistricting

## Initial Assessment

**BICKERSTAFF HEATH DELGADO ACOSTA LLP**

3711 S. MoPac Expressway  
Building One, Suite 300  
Austin, Texas 78746  
(512) 472-8021

[www.bickerstaff.com](http://www.bickerstaff.com)

# City of Texas City 2021 Redistricting

## Initial Assessment

**BICKERSTAFF HEATH DELGADO ACOSTA LLP**

3711 S. MoPac Expressway  
Building One, Suite 300  
Austin, Texas 78746  
(512) 472-8021

[www.bickerstaff.com](http://www.bickerstaff.com)

# REDISTRICTING

## Applicable Law

### Three Principles, plus

“One person – one vote”  
(equal population)

Voting Rights Act § 2  
(nondiscrimination)

*Shaw v. Reno*  
(limits use of race)

**Plus, as diagnostic tool:**  
Voting Rights Act § 5  
(retrogression)

# Redistricting

## One Person - One Vote

§ U.S. Constitution – single-member districts must have *approximately equal populations*

§ Rule of thumb: **total deviation < 10%**

- Compare most populous and least populous districts to “ideal”-sized district
- Add both departures from ideal together

<u>District</u>	<u>Ideal district</u>	<u>District total pop.</u>	<u>Difference</u>	<u>Deviation</u>
A	10,000	11,000	1000	+ 10.0 percent
B	10,000	10,750	750	+ 7.5 percent
C	10,000	10,250	250	+ 2.5 percent
D	10,000	8,000	- 2000	- 20.0 percent
<hr/>				
Totals:	40,000	40,000	net= 0	net= 0 percent

Total maximum deviation = difference between most populous and least populous districts = 10 percent + 20 percent = 30 percent.

## Example Deviation Calculation

# Available Census Data

## PL94-171 File

- n “Census block” level
- n Total population
- n VAP  
(voting age  
population)
- n Race
- n Hispanic origin



# What Population Do You Use?

## Total Population

- To determine one person - one vote

## VAP

(Voting Age Population)

- To measure voting rights issues

## Section 2 of the Voting Rights Act

- No discrimination on basis of race or language minority status
- Generally, avoid *cracking or packing*
- *Cracking or fracturing* is dividing minority voters to fragment their voting power.
- *Packing* is concentrating minority voters when dividing them would permit the group to elect their candidates of choice in more than one district
- Other practices can also violate Section 2

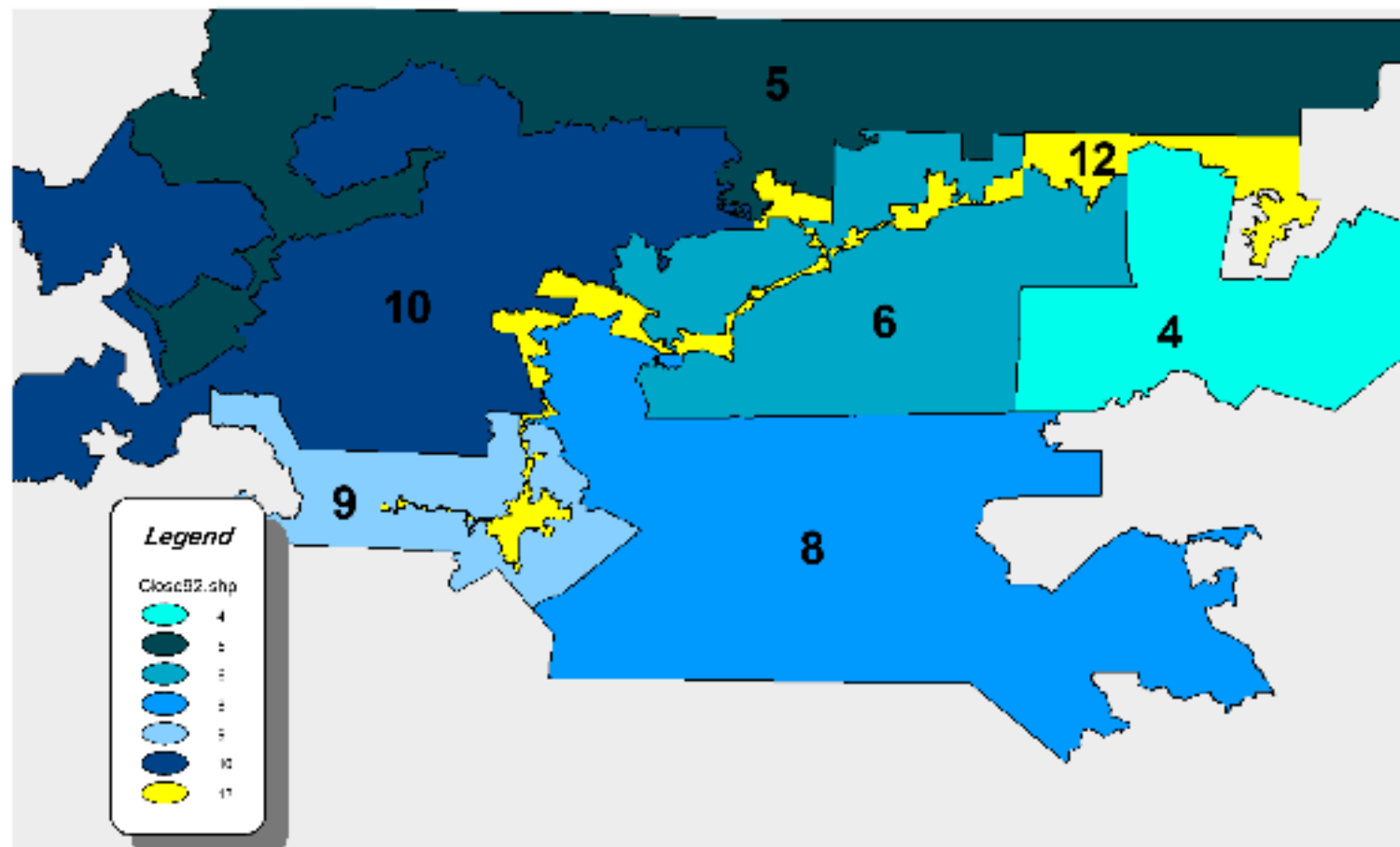
# 14th Amendment (*Shaw v. Reno*)

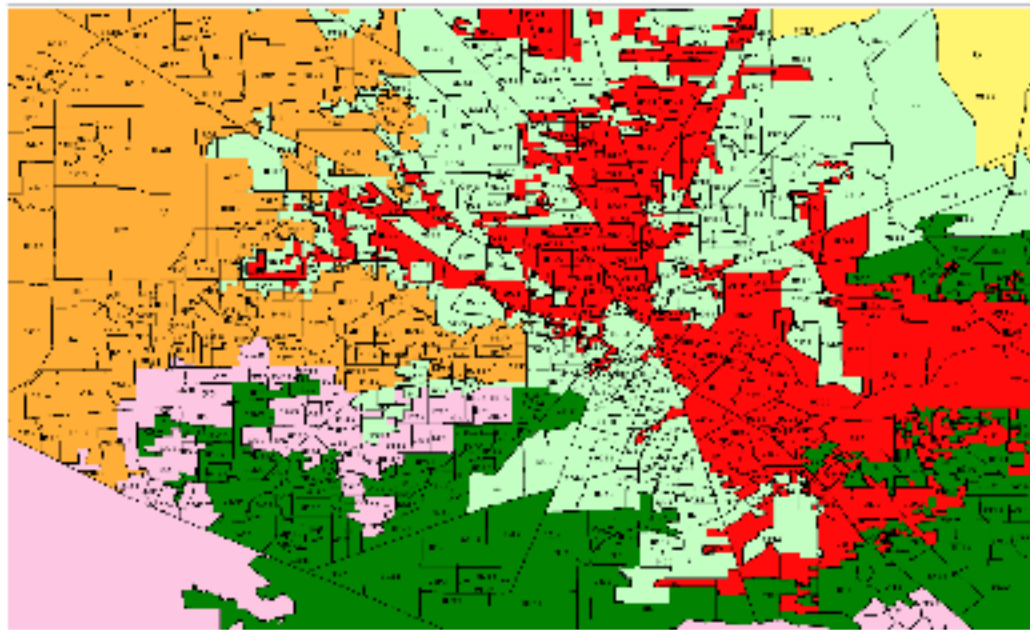
Limits race-based decision making, including redistricting

Was race the predominant consideration in drawing a redistricting plan?

If so, is the plan a *narrowly tailored* means of addressing a *compelling governmental interest*?

## CLOSE UP OF NORTH CAROLINA 1992 PLAN A





Central Harris County  
PLAN 1597

*Bush v. Vera*

AFTER

BEFORE



Central Harris County  
PLAN 766

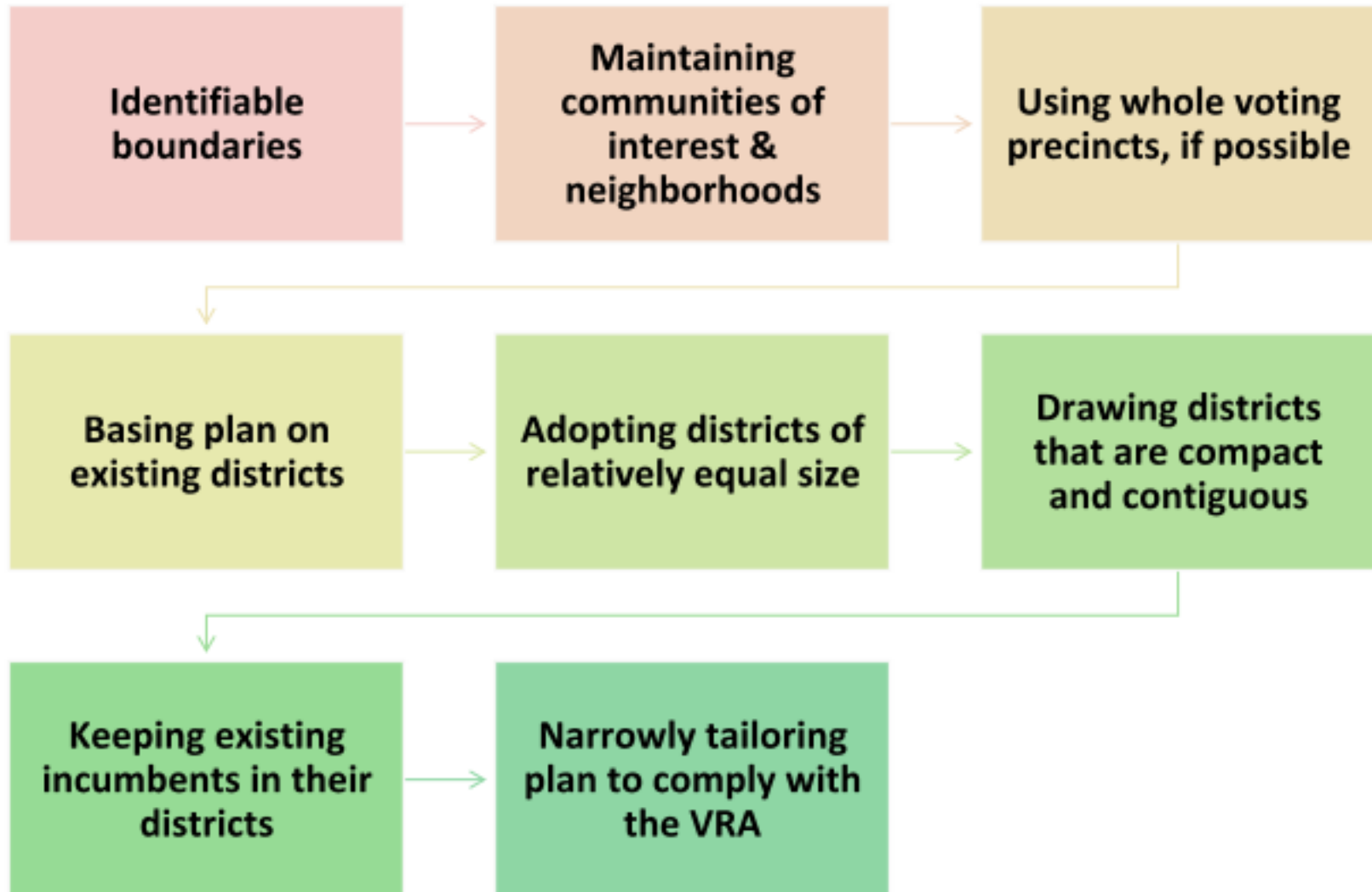
# Redistricting Standards under Shaw-Reno Line of Cases

- § Usually, race may not be the predominant factor to the subordination of traditional districting principles
- § But it is OK to be aware of race and to consider race *to satisfy Section 2 and Section 5*
- § To “narrowly tailor,” use race no more than necessary
- § Bizarrely-shaped districts not unconstitutional per se
  - Bizarre shape may be evidence that race predominated

# Section 5 of the Voting Rights Act

- § Preclearance no longer required (*Shelby County v. Holder* (2013))
- § Section 5 standard is “retrogression”
  - § Are minorities worse off under the new system?
  - § Still a useful diagnostic tool to identify potential Section 2 issues
- § No discriminatory purpose or effect

# Adopt Criteria



# Steps To Balancing Conflicting Legal Obligations In Redistricting

**Plan ahead**

- Build a record

**Be Aware**

- Of legal obligations and responsibilities

**Adopt**

- Criteria that reflect traditional redistricting principles, including consideration of race to the extent required to meet obligations under the Voting Rights Act

**Pay Attention**

# Steps To Balancing Conflicting Legal Obligations In Redistricting



Analyze the final plan in terms of how well it conforms to the adopted criteria



Make sure the analysis is considered by the City Council before plan adoption



Avoid districts that are not compact

# Plan Development Elements

Initial Assessment

Adopt plan criteria, guidelines

Develop illustrative plan(s)

Public comment / hearing

Analyze comments

Adopt final plan

Implementation



## **Proposed Redistricting Time Line**

TBD - Present Initial Assessment

TBD - First Drawing Workshop

TBD - Second Drawing Workshop

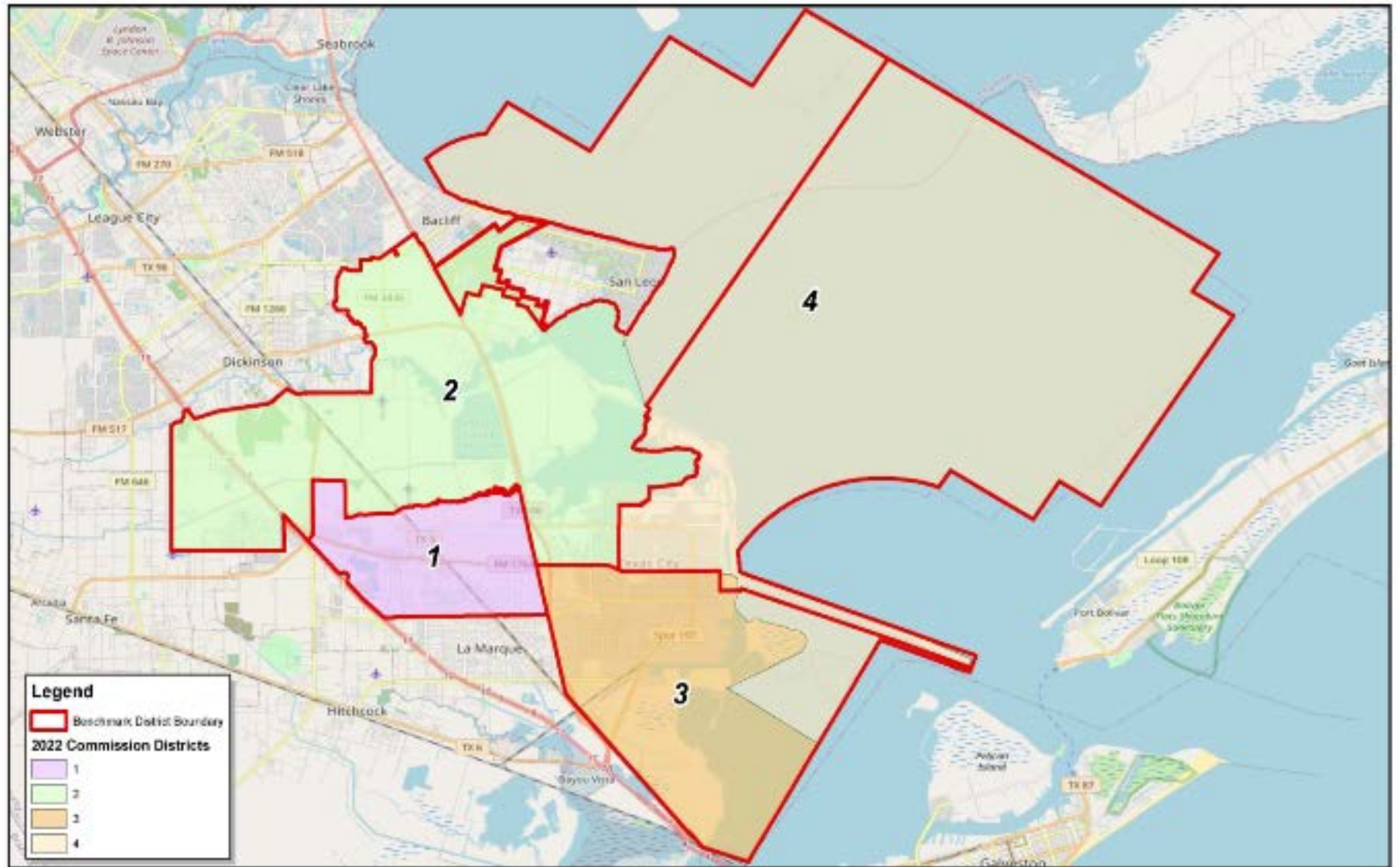
TBD - Final Adoption



# City of Texas City

## 2011 Benchmark with 2020 Census Data

# Current City Commission Districts



## Texas City Commission Districts 2022 Initial Assessment

Created: 3/31/2022

Differences between the Benchmark Boundary and the 2021 Census Geography.

© 2022 Bickerstaff Heath Delgado Acosta LLP  
Data Source: Roads, Water and other  
features obtained from the 2020  
Tigerline file, U.S. Census Bureau



**City of Texas City**  
**Overall Deviation For Current City Commission Districts**  
**Using 2020 Census Data**



**Texas City Commission Districts - 2022 Initial Assessment**

**Demographics Report - Summary 2020 Census Total Population**

Plan Last Edited on: 3/30/2022 5:27:03 PM

District	Persons	Ideal Size	Deviation	Hispanic % of Total Population	Non-Hispanic White % of Total Population	Non-Hispanic Black % of Total Population	Non-Hispanic Asian % of Total Population	Non-Hispanic Other % of Total Population
<b>1</b>	15,087	13,020	15.88%	22.59%	23.88%	48.21%	1.28%	4.12%
<b>2</b>	14,220	13,020	9.22%	30.41%	44.32%	18.87%	2.23%	4.16%
<b>3</b>	10,521	13,020	-19.19%	40.18%	30.94%	24.95%	0.55%	3.38%
<b>4</b>	12,250	13,020	-5.91%	33.94%	48.02%	12.67%	1.03%	4.33%
<b>TOTAL:</b>	52,078			30.95%	36.57%	27.14%	1.33%	4.03%

**Ideal Size: 52078 / 4 = 13020**

**Total Population: 52,078**

**Overall Deviation: 35.07%**

*Some percentages may be subject to rounding errors.*

**City of Texas City**  
**Overall Deviation For Current City Commission Districts**  
**Using 2020 Census Data**



**Texas City Commission Districts - 2022 Initial Assessment**

**Demographics Report - Summary 2020 Census Voting Age Population**

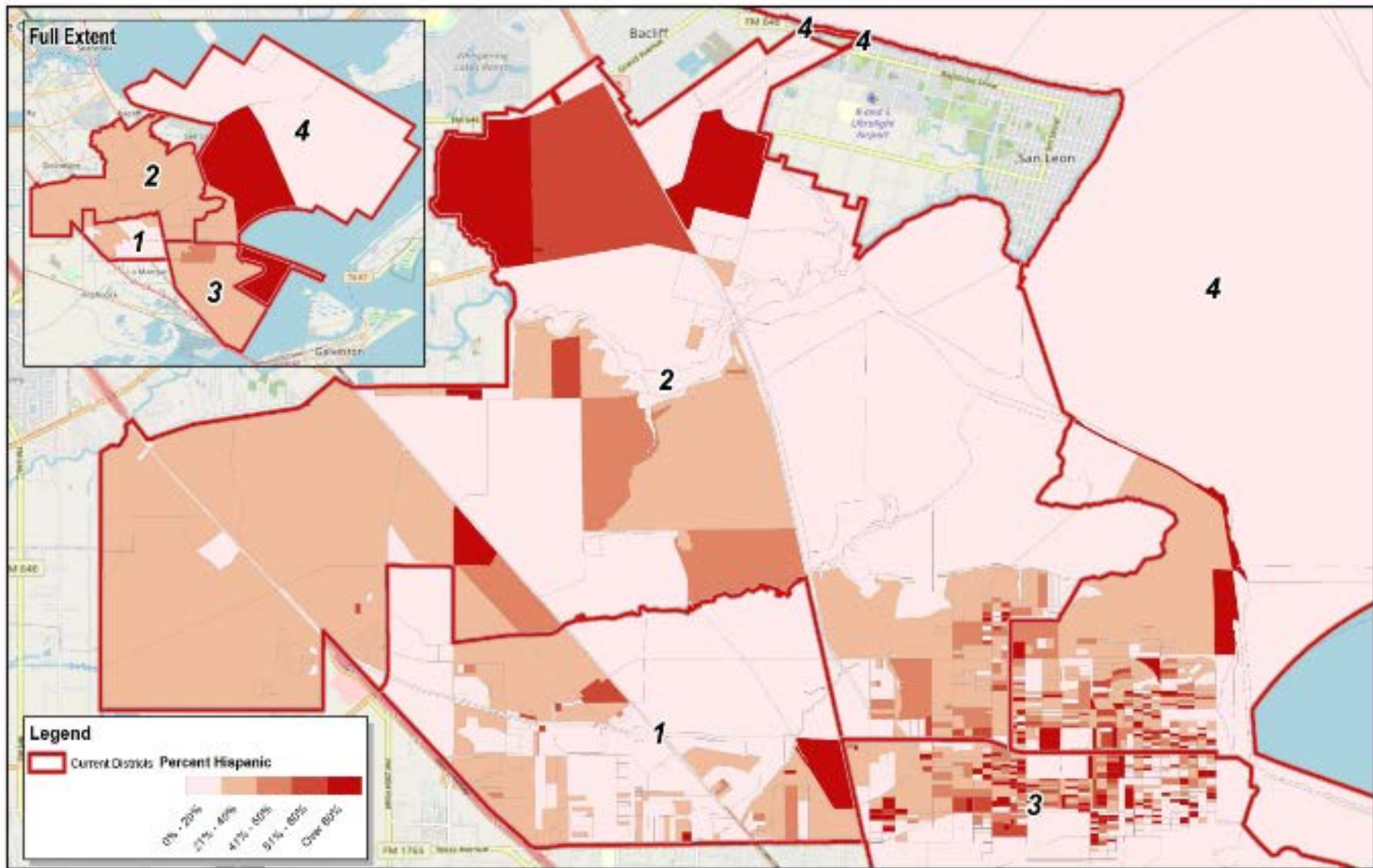
Plan Last Edited on: 3/30/2022 5:27:03 PM

District	Total VAP*		Hispanic % of Total VAP	Non-Hispanic Anglo % of Total VAP	Non-Hispanic Black % of Total VAP	Non-Hispanic Asian % of Total VAP	Non-Hispanic Other % of Total VAP
1	11,279		19.83%	26.61%	48.44%	1.38%	3.83%
2	11,011		27.45%	48.15%	18.46%	2.35%	3.58%
3	7,694		37.31%	34.05%	25.23%	0.61%	2.79%
4	9,262		30.66%	52.87%	11.62%	1.13%	3.71%
	39,246		27.95%	40.31%	26.79%	1.44%	3.53%

\* VAP - Voting Age Population

*Some percentages may be subject to rounding errors.*

# Thematic Maps



Texas City Commission Districts - 2022 Initial Assessment  
Percent Hispanic by 2020 Census Block

© 2022 Bickerstaff Heath Delgado Acosta LLP  
Data Source: Roads, Water and other  
features obtained from the 2020  
Tiger/line files, U.S. Census Bureau

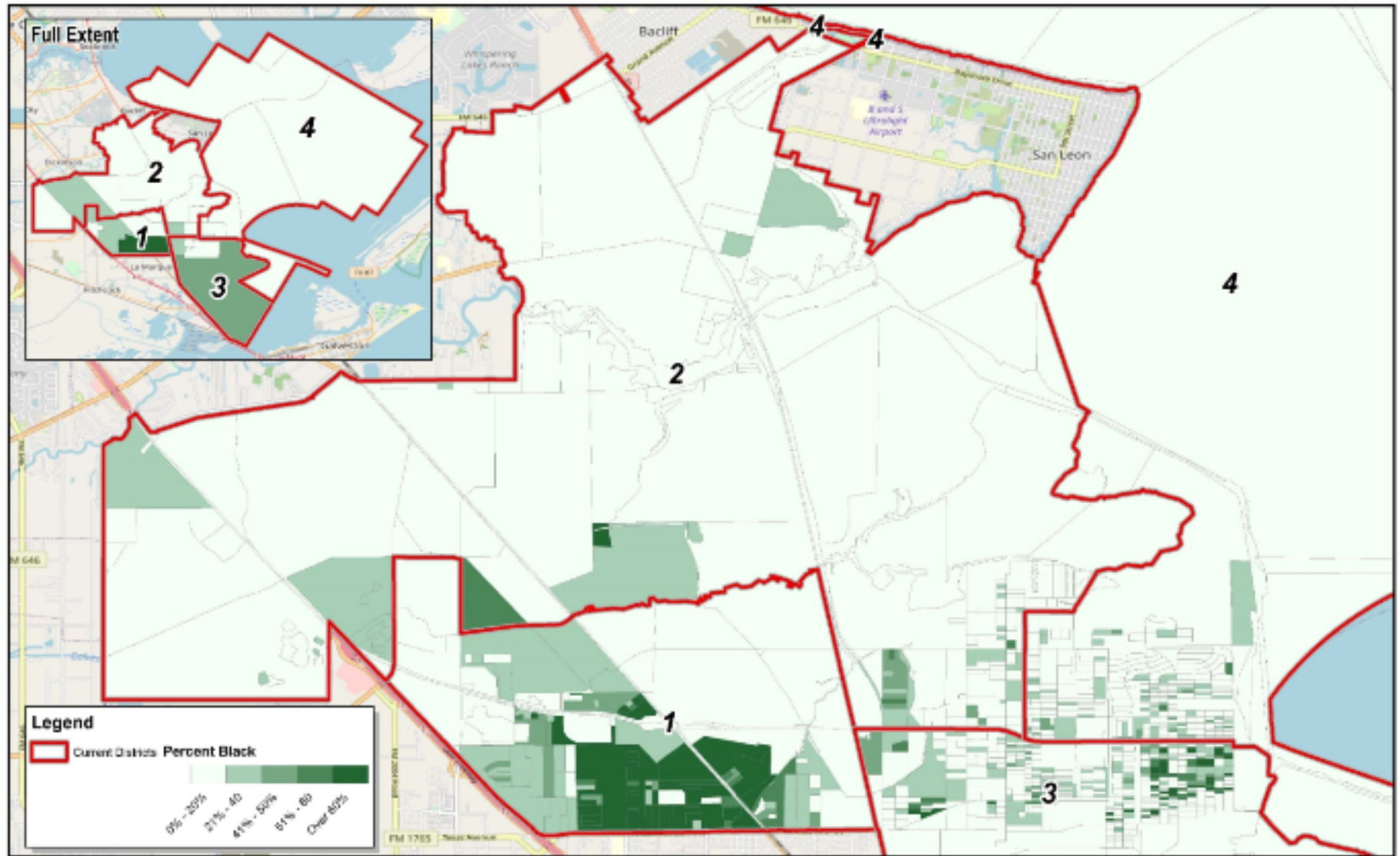


0 0.5 1 2 Miles

Created: 3/31/2022

Differences between the Beachmax Boundary and the 2021 Census Geography.

# Thematic Maps



Texas City Commission Districts - 2022 Initial Assessment  
Percent Black by 2020 Census Block

© 2022 Bokenstiff Heath Delgado Acosta LLP  
Data Source: Roads, Water and other  
features obtained from the 2000  
Tigerline files, U.S. Census Bureau



0 0.5 1 2 Miles

Created: 3/31/2022

Differences between the Benchmark Boundary and the 2001 Census Geography.

# City of Texas City 2021 Redistricting

## Initial Assessment

**BICKERSTAFF HEATH DELGADO ACOSTA LLP**

3711 S. MoPac Expressway  
Building One, Suite 300  
Austin, Texas 78746  
(512) 472-8021

[www.bickerstaff.com](http://www.bickerstaff.com)