

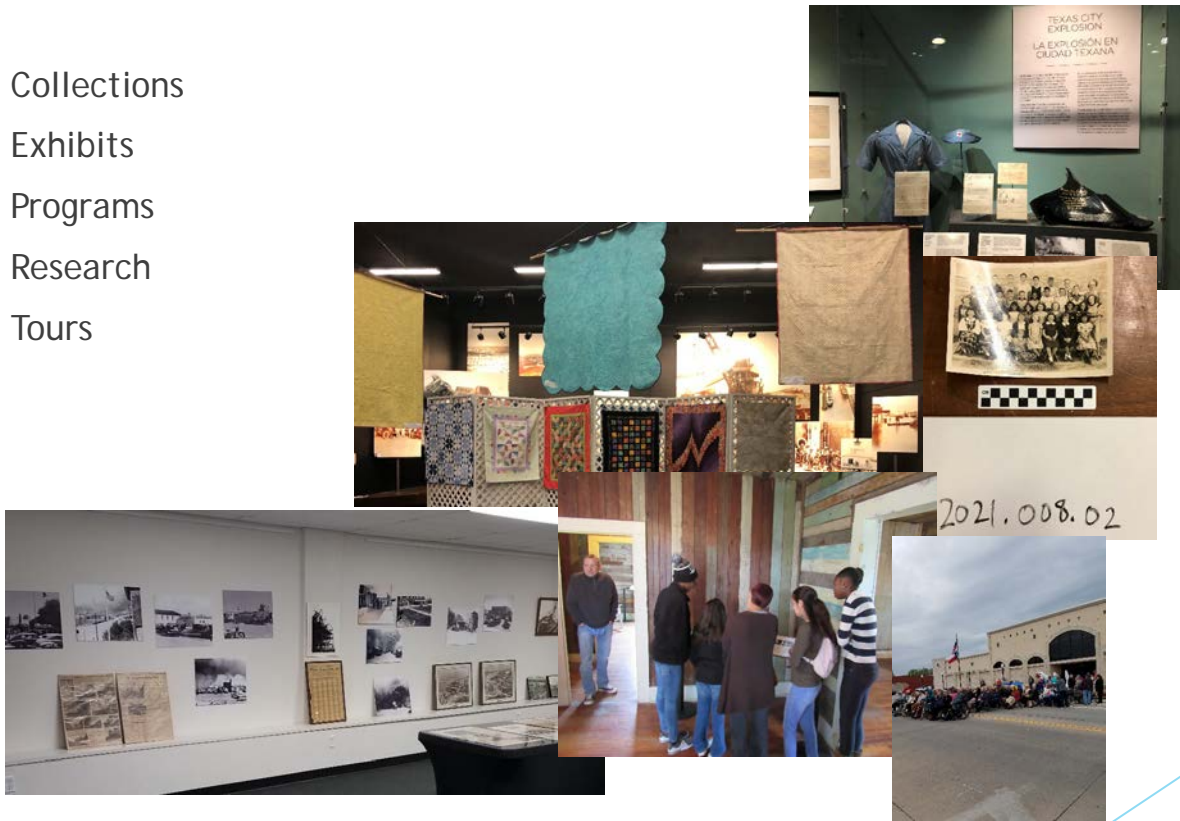
Report on the Texas City Museum

Presented by
Amanda Vance
Museum Curator
Department of Recreation
and Tourism

City Commission Meeting
July 5, 2023
5:00 P.M.

MUSEUM: what we do

- ▶ Collections
- ▶ Exhibits
- ▶ Programs
- ▶ Research
- ▶ Tours





HISTORIC HOMES: Heritage Square Park

- ▶ Davison Home
- ▶ Engineers Cottage
- ▶ Moore Home





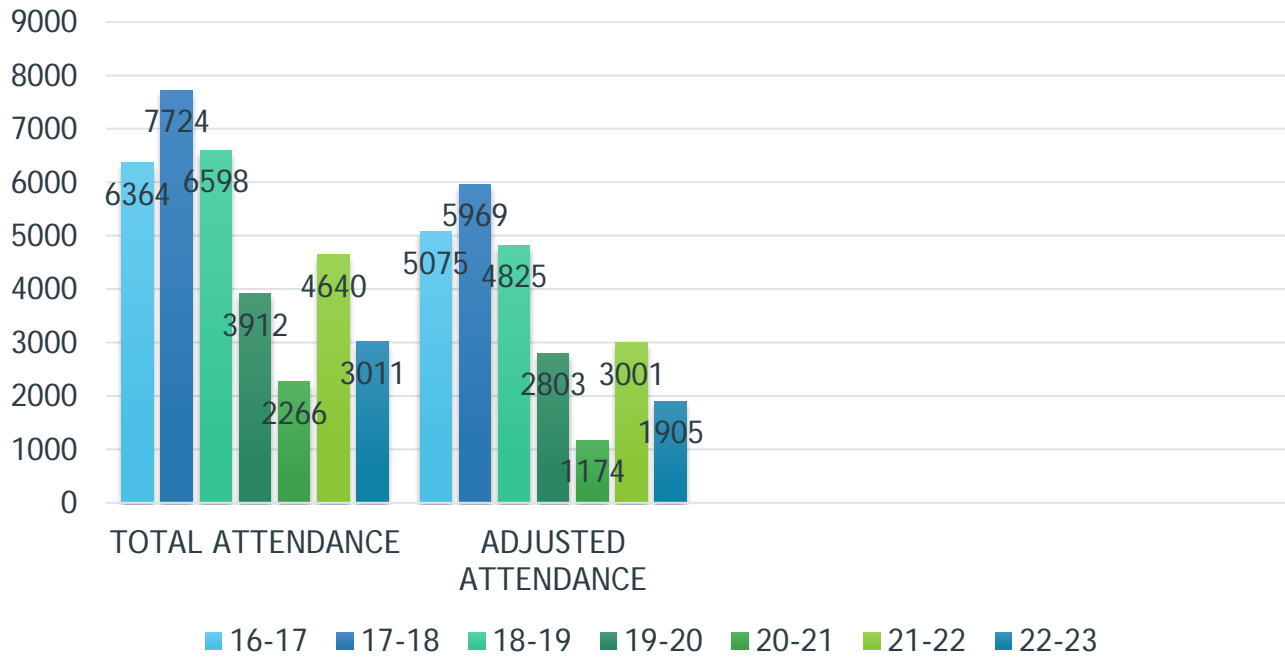
HISTORIC HOMES: The Bell House

Located in the 1867 Settlement Historic District

MEMBERSHIP AND ADMISSION

Annual Membership Levels	Fee
1 Adult	\$ 35.00
1 Senior (60+)/ College Student/Military (with ID)	\$ 25.00
2 Adults	\$ 45.00
2 Seniors (60+)/Military (with ID)	\$ 35.00
Family (4 people)	\$ 75.00
Family Plus (6 people)	\$ 125.00
Corporate (employee with ID)	\$ 1,500.00

- ▶ Adult: \$7
- ▶ Senior (60+)/College Student or Military with ID: \$5
- ▶ Student (7-17): \$4
- ▶ Children 6 and under are free.



ATTENDANCE

GOALS

New "Welcome" video

Museum guides in Spanish

Object labels and panels professionally printed for temporary exhibits

Reprint "We Were There" book

Remodel Children's Discovery Room

Add Black History exhibit to the permanent displays

PROFESSIONAL MEMBERSHIPS: National

- ▶ American Alliance of Museum
- ▶ American Institute for Conservation
- ▶ Mountain Plains Museum Association
- ▶ American Association of State and Local History
 - ▶ History in Our Parks task force (founding member)

PROFESSIONAL MEMBERSHIPS: State

- ▶ Texas Association of Museum
 - ▶ Collection Managers Committee (CMC)
 - ▶ Historic Sites and Houses Affinity Group (HSHAG)
- ▶ Texas Collections Emergency Resource Alliance (TX-CERA) and Texas Heritage Responders
 - ▶ Co-vice President
 - ▶ Texas Voluntary Organizations Active in Disaster (VOAD) liaison

PROFESSIONAL MEMBERSHIPS:

Local

- ▶ Galveston County Historical Commission
- ▶ South-Eastern Texas Museum Association (SETMA)
- ▶ Texas City Heritage Association
 - ▶ Liaison
- ▶ Galveston Area Museum Network
 - ▶ Social Media and Membership Manager

Questions?

