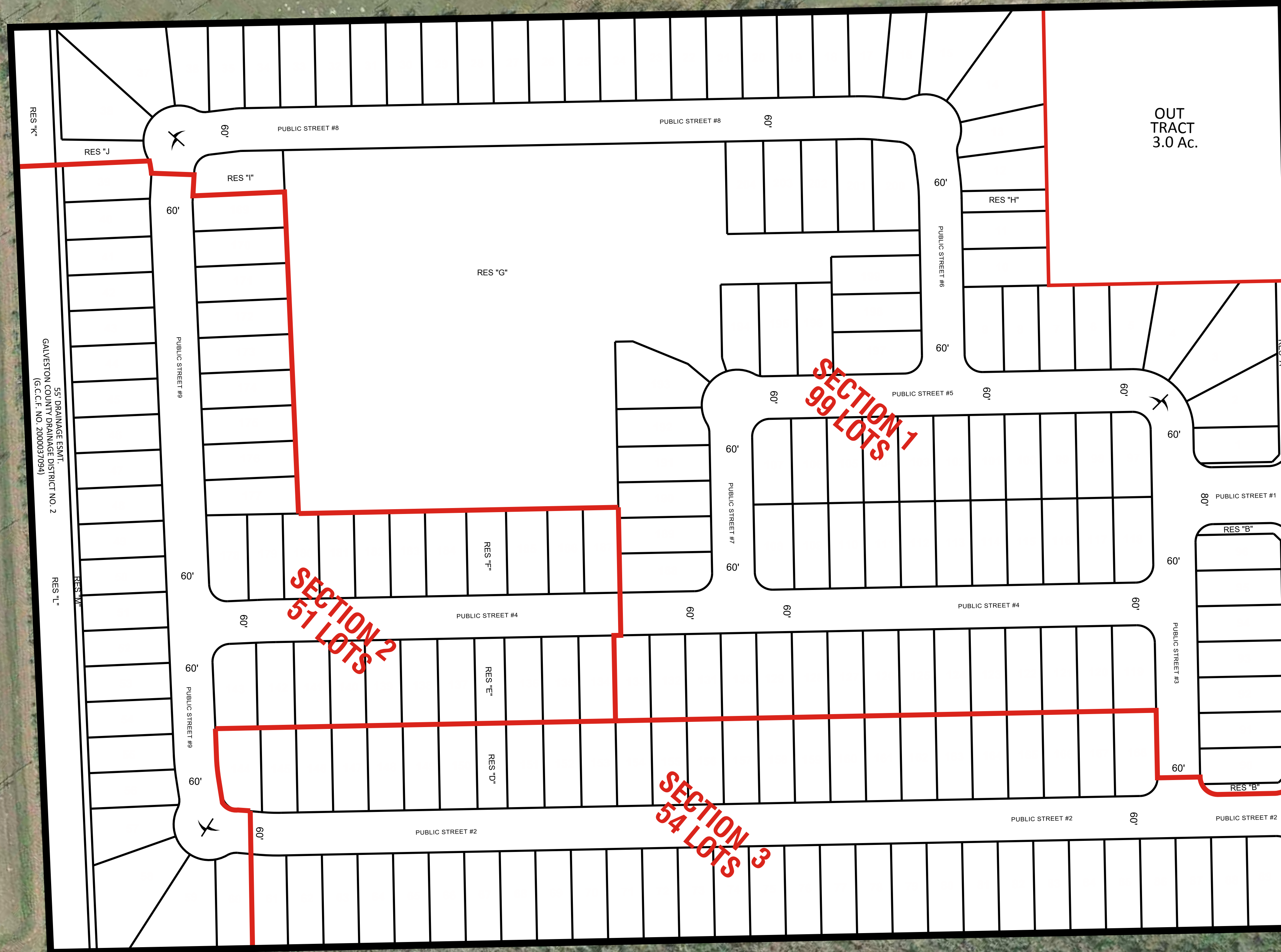


Exhibit C

25TH AVENUE N
(120' R.O.W.)
(VOL. 3075, PG. 133 G.C.D.R.)
(G.C.C.F. NO. 8648578)



E:\151-141-401\Plan\Gis\Vida_Coastera_SubdivisionMasterPlan_2020-10-15.dwg Oct 29, 2020 3:08pm Edited by: bweitzler

Vida Coastera Subdivision Master Plan

A Subdivision of 53.1544 acres out of the S.A. & M.G. R.R. Survey, A-189 and John Sellers Survey, A-180, Texas City, Galveston County, Texas.

204 Lots, 5 Blocks and 13 Reserves Totalling 9.70 Acres

Owner/Developer: KB Home Lone Star Inc., 11314 Richmond Avenue, Houston, TX, 77082. (877)238.4720.

October 15, 2020

1" = 100'
0' 50' 100' 200'
SCALE: 1"=100'



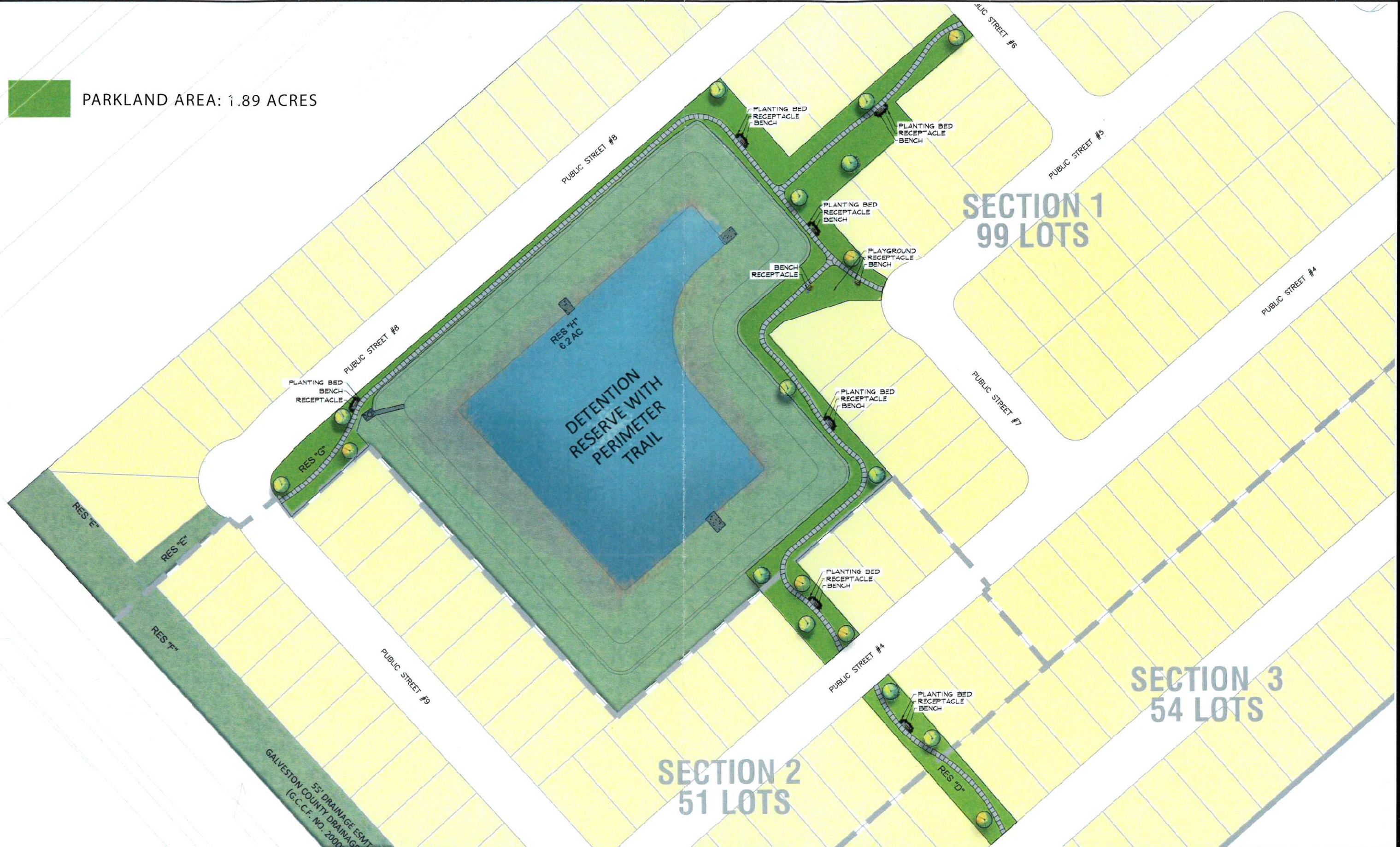
10011 MEADOWGLEN LANE
HOUSTON, TEXAS 77042
713.784.4500
EHRAINC.COM
TBPE No. F-726
TBPLS No. 10092300

EHRA JOB NO.
181-014-00

No warranty or representation of intended use, design or proposed improvements are made herein. All Plans for land or facilities are subject to change without notice.



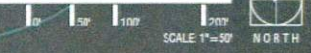
PARKLAND AREA: 1.89 ACRES



VIDA COSTERA OPEN SPACE AMENITIES PLAN

Conceptual drawing of subdivision located in Galveston County, Texas. Details are subject to change.

October, 2020



EHRA
 ENGINEERING THE FUTURE
 SINCE 1994

10011 MEADOWGLEN LAKE
 HOUSTON, TEXAS 77042
 713.784.4500
 EHRAMC.COM
 TBPE No. F-726
 TBPLS No. 18092300

EHRA JOB NO.
 181-014-00

No warranty or representation of intended use, status or proposed improvements are made herein. All Plans for each of facilities are subject to change without notice.