



Project:
 Atascosa County Sheriff - Dish
 Machine
 Jose Mendoza
 1108 Campbell
 Jourdanton, TX 78026


From:
 Cook's Correctional
 Rodrigo Alvear
 27725 Diehl Rd.
 Warrenville, IL 60555
 630-821-0234

Job Reference Number: 78026-1

Item	Qty	Description	Sell	Sell Total
1	1 ea	DISHWASHER, DOOR TYPE  CMA Dishmachines Model No. 180-S Dishwasher, Straight-Thru Design, door type, 25-1/2"W x 25"D x 60"H, high temperature sanitizing, (60) racks/hour, external Poly Pro™ scrap accumulator, electric tank heat, auto fill, stainless steel construction, includes (1) open & (1) peg rack, 1 HP wash pump, NSF, cULus, ENERGY STAR® Dimensions 60(h) x 25.5(w) x 25(d)	\$8,410.58	\$8,410.58
	1 ea	Booster Heater (factory installed)	\$925.48	<Optional>
	1 ea	208v/60/3-ph, 49.0 amps, standard		
	1 ea	3 doors open	\$123.30	<Optional>
	1 ea	Safe-T-Temp feature assures 180 degree sanitizing rinse once the booster thermostat has been satisfied. Cycle time will vary due to incoming water temperature.		
	1 ea	Low Chemical Alarm Kit, 220v/60/1-ph	\$162.77	<Optional>
	1 ea	Drain Water Tempering Kit – fits 180 Uprights	\$280.23	<Optional>
		LEAD TIME 5 WEEKS *60 RACKS PER HOUR* Weight: 347 lbs total		
			ITEM TOTAL:	\$8,410.58
2	1 ea	DISHWASHER, DOOR TYPE  Champion Model No. DH-6000 Genesis Dishwasher, door type, high temperature sanitizing, (60) racks/hour capacity, straight through or corner, electric tank heat, auto start, pot & pan mode, (4) cycle times, auto-fill, detergent & chemical connections, interchangeable upper & lower spray arms, automatic drain valve, vent fan control, bottom mounted HMI controls, includes (1) flat rack & (1) peg rack, stainless steel construction, 2 HP self-draining pump, NSF, cULus, ENERGY STAR® Dimensions 68(h) x 34.13(w) x 31.63(d)	\$12,053.39	\$12,053.39

Item	Qty	Description	Sell	Sell Total
	1 ea	1 year parts & labor warranty, standard		
	1 ea	Complimentary factory authorized performance test included, upon equipment start-up. Consult local Champion sales representative for coordination of the start-up. If customer is beyond 60 miles from Champion authorized service agent, consult factory.		
	1 ea	Single-point electrical connection, standard		
	1 ea	Booster Heater, built-in, 70° rise, with mounted PRV	\$2,328.94	\$2,328.94
	1 ea	208-240v/60/3-ph		
	1 ea	Straight-through design application		
	1 ea	Drain water tempering kit, factory mounted & inter-wired (un-mounted, if pumped drain chosen)	\$729.51	\$729.51
		Weight: 300 lbs total		
			ITEM TOTAL:	\$15,111.84
3	1 ea	DISHWASHER, DOOR TYPE	\$10,931.73	\$10,931.73
		Jackson WWS Model No. DYNASTAR(40-70) DynaStar® Dishwasher, door type, high temperature sanitizing with built-in booster heater (40-70°F rise), 28-3/4"W x 34"D x 62-1/8"H, approximately (62) racks/hour, Sani-Sure™ final rinse system, 17-1/2" clearance, automatic tank fill, pumped rinse, adjustable rinse system – Econo and Turbo, (3) timed cycles, digital LED display, delime cycle, vent fan control, onboard digital diagnostics, triple wash arm, 1 hp stainless steel wash bump motor, interchangeable scrap baskets, electric tank heater, universal (straight-thru/corner) type, stainless steel exterior, (dishtable not included), cETLus, ETL-Sanitation, ENERGY STAR® Dimensions 62.13(h) x 28.75(w) x 34(d)		
	1 ea	1 year parts & labor warranty, continental USA, standard		
	1 ea	70 degree rise booster heater, standard		
	1 ea	Voltage to be verified with jobsite		
	1 ea	04820-100-04-07 Pressure Regulator, 1/2"	\$146.50	<Optional>
	1 ea	05700-002-64-67 Water Hammer Arrestor, 1/2"	\$205.20	<Optional>
	1 ea	06401-004-85-80 Drain Water Tempering Kit (DynaStar models, TempStar® models and NXP-HTD)	\$619.47	<Optional>
	1 ea	04730-003-05-76 Scaltrol Water Treatment	\$287.18	<Optional>
		Lead time 30 business days		
		Weight: 366 lbs total		
			ITEM TOTAL:	\$10,931.73
3.1	1 ea	DISHWASHER, DOOR TYPE	\$10,248.22	<Alternate>



Item	Qty	Description	Sell	Sell Total
		Jackson WWS Model No. TEMPSTAR TempStar® Dishwasher, door type, high temperature electric tank heat with built-in booster, universal (straight-thru/corner) type, approximately (63) racks/hour capacity (0.89 gallons per rack), stainless steel exterior, electro-mech controls, universal timer, Sani-Sure™, auto tank fill, door actuated start, dishtable not included, cETLus, ETL-Sanitation, ENERGY STAR® Dimensions 64.38(h) x 32(w) x 29(d)		
	1 ea	1 year parts & labor warranty, continental USA, standard		<Alternate>
	1 ea	70 degree rise booster heater, standard		<Alternate>
	1 ea	Voltage to be verified with jobsite		<Alternate>
	1 ea	04820-100-04-07 Pressure Regulator, 1/2"	\$146.50	<Alternate>
	1 ea	05700-002-64-67 Water Hammer Arrestor, 1/2"	\$205.20	<Alternate>
	1 ea	06401-004-85-80 Drain Water Tempering Kit (DynaStar models, TempStar® models and NXP-HTD)	\$619.47	<Alternate>
	1 ea	04730-003-05-76 Scaltrol Water Treatment	\$261.07	<Alternate>
		Lead time 10 business days		<Alternate>
		Weight: 263 lbs total		
			ITEM TOTAL: <Alternate>	\$11,480.46

Total \$34,454.15

Quote Approval

By affixing their signature to this document, the undersigned hereby affirms the accuracy of the provided information. The signee acknowledges that all utilities and dimensions specified are compatible with the operational requirements at the designated facility. Furthermore, it is confirmed that the listed equipment is suitable for passage through doorways, hallways, and vestibules from the receiving area to the kitchen.

In the event of equipment returns attributable to inaccuracies in utilities or measurements, the signee acknowledges the imposition of a manufacturer restocking fee, in addition to the applicable return shipping charges.

Receiving Policy and Guidelines:

Prior to signing for the delivery, it is crucial to thoroughly inspect and count all cartons. Note any shortages, damages, or problems on the delivery receipt. In case of visible damage, refuse damaged boxes by checking for crushed corners, wetness, or punctures. If the delivery includes equipment, inspect all parts before signing.

If a full inspection is not possible, please make a note on the bill of lading that you will inspect at a later time (within 24 hours of receipt).

For refused shipments, the customer is responsible for full freight charges and applicable fees in both directions, unless the refusal is due to shipment damage or a shipping error made by CooksDirect.com.

Most items are eligible for return within a 30-day period from the customer's receipt of the shipment. Depending on the manufacturer, a restocking fee of 15% to 50% may be applicable. Return freight charges may also apply based on the manufacturer's policy. For inquiries regarding specific return policies for a particular manufacturer or product, kindly reach out to our Customer Service team at 1-866-506-3048 or via email at customerservice@cooksdirect.com.

Please review the following criteria for returning an order:

1. Returned items must be unused, undamaged, and returned intact with original materials.
2. Special ordered or custom items cannot be returned.

Returns must be initiated within the first 30 days of receipt. Orders exceeding the 30-day return window are not eligible for returns through Cook's Direct. For product issues, please contact the manufacturer, as most large equipment is covered by a 1-year warranty.

Shipping & Delivery Information:

To ensure your order is processed in a timely manner please provide the following information along with your signature:

Delivery Address

Contact Name:

Phone Number:

Receiving Hours:

Receiving Dock Onsite (Y/N):

(If there is no dock onsite, additional fees for lift gate service may apply)

Forklift Onsite (Y/N):

Acceptance: _____ Date: _____

Printed Name: _____

Project Grand Total: \$34,454.15



HIGH TEMPERATURE SINGLE RACK STRAIGHT DISHWASHER

180-S

High Temperature
Single Rack Dishwasher



FEATURES

- 60 racks / 240 covers per hour.
- Economical to operate. Uses only .82 gallons of water per cycle.
- Automatic soil purging system. Filters wash water and traps plate debris into an external tray. Tray can be easily removed for dumping contents.
- All stainless steel construction offers durable performance and years of trouble free operation.
- Built-in chemical resistant industrial 7kW (240V) heater is proven to be more durable than commercial style heaters.
- Unique spray arm system features upper and lower stainless steel wash arms with reinforced end caps.
- Auto start/stop makes operation safe and easy.
- Field convertible for a wide range of applications.
- Safety Temp feature assures 180°F sanitizing rinse every cycle.
- Single point electrical connection.
- Automatic tank fill.
- Interchangeable upper and lower arms.
- Built in Delime switch.

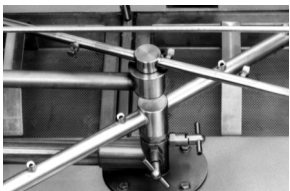
CMA MODEL: 180-S



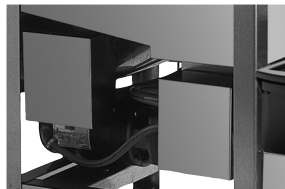
Top mounted control box is water tight and includes a rack counter, extended wash/delimer switch and easy to read temperature gauges.



External scrap tray maintains clean wash water and prevents debris from clogging the drain.



Unique pull-pin design allows wash arms to be easily removed for cleaning.



Industrial wash tank and optional booster heaters are designed for years of trouble free service.

AVAILABLE OPTIONS

- Exhaust Fan Time Control
- Built-in 12kW booster heater
- CMA-180 Conversion Kit Straight to Corner
- Alternative electrical available for export
- Stainless steel dishtables
- Dual power supply connections
- 3 doors open
- Slant Shelf
- Stainless Steel Scrap Trap Upgrade

CMA
MIZER
Registered Trademark



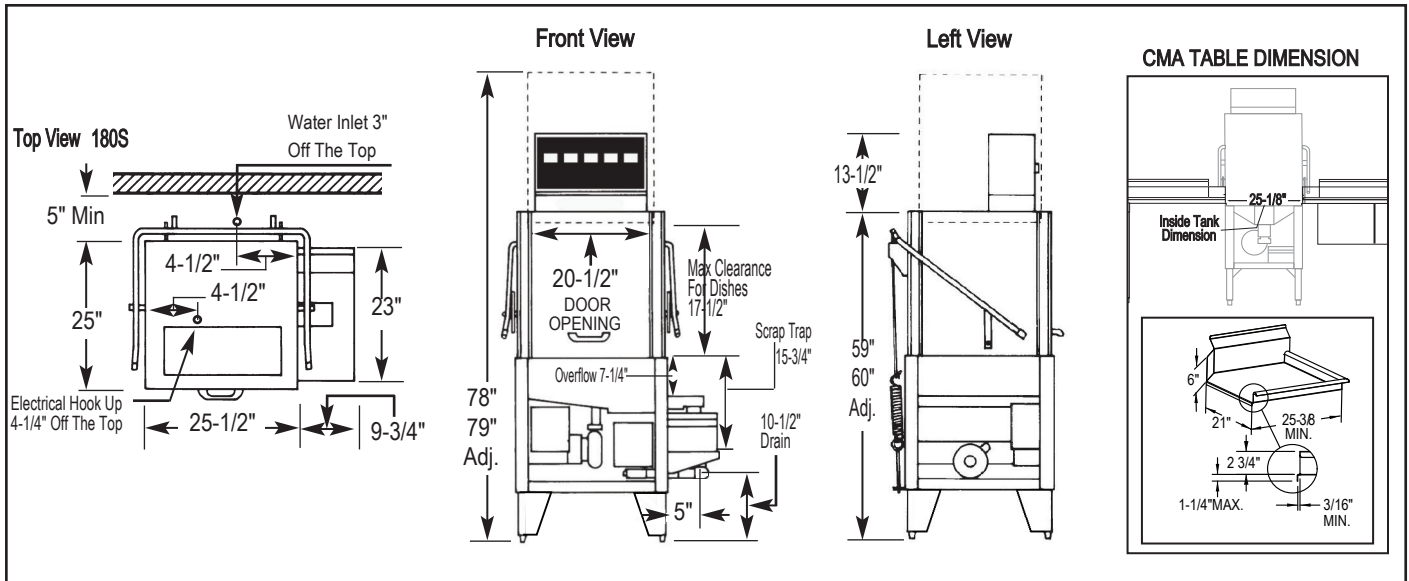


CMA-180S

High Temperature
Straight
Single Rack Dishwasher

WARNINGS:

- Plumbing connections must be made by a qualified service company who will comply with all available Federal, State, and Local Health, Plumbing and Safety codes.
- CMA recommends utilizing a water softening system to maintain water hardness measurements of 3.5 gpp (grains per gallon) or less. This will assure maximum results and optimum operation of the dishmachine.



Specifications:

MODEL CMA-180S	USA	METRIC		USA	METRIC
WATER CONSUMPTION			WASH PUMP MOTOR HP	1	1
PER RACK	.82 GAL	3.1 L	DIMENSIONS		
PER HOUR	49.2 GAL	186 L	DEPTH	25"	(63.5cm)
OPERATING CYCLE			WIDTH (OUTSIDE DIMENSION)	25"-1/2"	(65cm)
WASH TIME - SEC.	42	42	TOTAL HEIGHT WITH DOOR OPEN	78"-79"	(198-212cm)
RINSE TIME - SEC.	12	12	STANDARD TABLE HEIGHT	34"	(86.3cm)
DWELL TIME - SEC.	4	4	MAX CLEARANCE FOR DISHES	17-1/2"	(44cm)
TOTAL CYCLE	58	58	DRAIN CONNECTION (OFF FLOOR)	11-1/2"-12-1/2"	(29-32cm)
OPERATING CAPACITY			STANDARD DISHRACK	1	1
RACKS PER HOUR	60	60	DIMENSIONS	20" x 20"	50.8 x 50.8cm
WASH TANK CAPACITY	8 GAL.	30.3 L	ELECTRICAL RATING	VOLTS	PHASE
PUMP CAPACITY	52 GPM	197 LPM	WITHOUT BOOSTER	208	1
WATER REQUIREMENTS				240	1
WITHOUT BOOSTER HEATER	180°F	82°C		208	3
WITH BOOSTER HEATER	120°F - 140°F	49°C - 60°C		240	3
WITH BOOSTER				480	3
WATER INLET	3/4"	1.9cm	WITH BOOSTER	208	1
DRAIN CONNECTION	2"	5.1cm		240	1
RINSE PRESSURE SET	20 ±5psi	1.41 kg/cm²		208	3
				240	3
				480	3
OPERATING TEMPERATURE			APPROXIMATE SHIPPING WEIGHT		
WASH-°F (MIN)	155°F-160°F	68°C-71°C	STRAIGHT WITHOUT BOOSTER	338#	(151kg)
RINSE-°F (MIN)	180°F-195°F	82°C-90°C	STRAIGHT WITH BOOSTER	357#	(161.9kg)
			STRAIGHT-EXT WITH BOOSTER		
			SHIPPING DIMENSIONS	PALLET & BOX @ 41" X 41" X 80"	

Summary Specifications: Model CMA-180S

The model CMA-180S single tank, high temperature dishwasher is designed for years of trouble free service, producing sparkling results while conserving energy, water and chemicals. This machine is available with an optional "built in" booster heater, assuring a continuous supply of 180°F hot water, and is easily field convertible for either corner or straight installation. Unique soil purging system filters wash water and plate debris into an external tray. The CMA-180S is NSF, UL, CUL approved. Constructed entirely of stainless steel.

Available Models:

- CMA-180C Corner
- CMA-180CB Corner with booster
- CMA-180S Straight
- CMA-180SB Straight with booster

Advisory: CMA does NOT endorse "Tankless On-Demand" water heaters for use on CMA Dishmachine products. CMA DOES endorse, and highly recommends, the standard "tank" style water heaters, sized properly to handle each particular facility with their water heating requirements.



CMA Dishmachines 12700 Knott Street Garden Grove, CA 92841 • 800-854-6417 • 714-898-8781 • Fax: 714-895-2141 • www.cmadishmachines.com

CMA reserves the right to modify specifications or discontinue models without prior notification.

© 07-2021 CMA, Inc.

an Ali Group Company



The Spirit of Excellence

Champion®

The Dishwashing Machine Specialists

Project _____

Item No. _____

Quantity _____

STANDARD FEATURES

- **Factory Authorized Startup**
- **HMI – Operator Touch Screen Interface**
- **On-Board Service Diagnostics**
- **Field Convertible – Single to three, or three to single phase**
- **Sleep Mode – All internal heaters shut off after 4 hours idle**
- Auto delime with delime notification
- Field convertible from straight to corner operation
- Dual NSF listed as both a dishwasher and potwasher
- Rinse Sentry – ensures 180°F final rinse, requires built-in booster
- Cycle counter
- Auto start – starts unit when hood is closed
- Single or dual point electrical connection
- High efficiency 2 HP pump
- Self draining pump
- Automatic tank fill
- Automatic drain valve – drains wash tank when power is off
- PRV (Mounted Pressure Reducing Valve)
- Vent fan control
- 4 selectable cycles

DH-6000

High Temperature
Hood-type Dishwashing Machine



DH-6000 HOOD-TYPE

OPTIONS & ACCESSORIES

- NEW** Built-in detergent and rinse aid pumps
- Drain Water Tempering kit (unmounted)
- Ventless/Heat Recovery/Condensate Removal option
- Door Interlock – locks door closed during the vent fan cycle
- Racks
 - Peg
 - Flat
- Corner Operation splash baffle
- NEW** Champion ION scale prevention system
- Built-in booster configured to ensure 180° rinse



Photo is for general visual representation only. Please refer to specifications for the latest detailed product information.

SPECIFIER STATEMENT

Specified unit will be Champion model DH-6000 high temperature hood-type dish-washing machine. Features HMI controls, Rinse Sentry, Auto start, up to 60 racks/hour, 0.73 US gals/rack [2.76 liters/rack, 0.61 imp. gals/rack].

1 year parts and labor warranty.

Champion Industries, Inc.
3765 Champion Blvd., Winston-Salem, NC 27105
Tel: 336/661-1556 Fax: 336/661-1979

2674 N. Service Road
Jordan Station, Ontario, Canada L0R 1S0
Tel: 800/263-5798 Fax: 905/562-4618

www.ChampionIndustries.com

DH-6000 HOOD-TYPE

Champion®

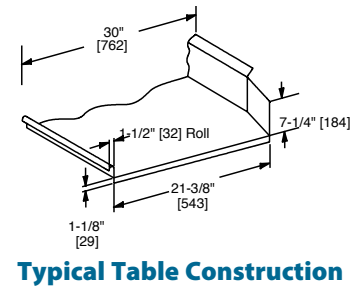
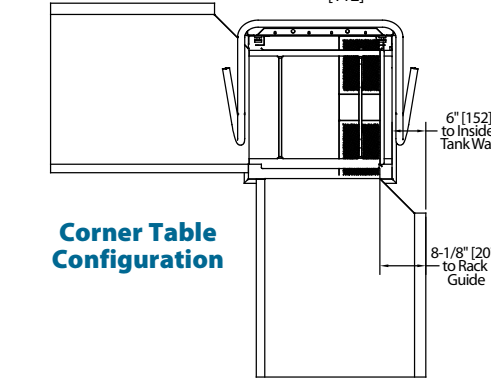
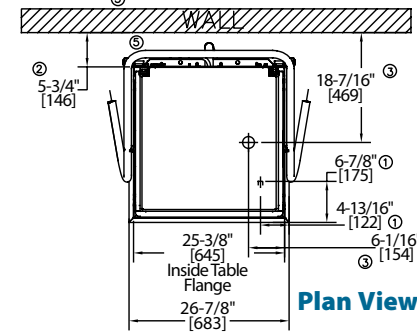
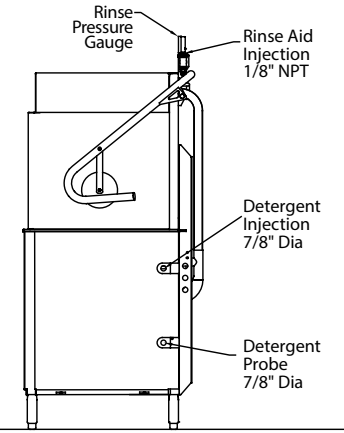
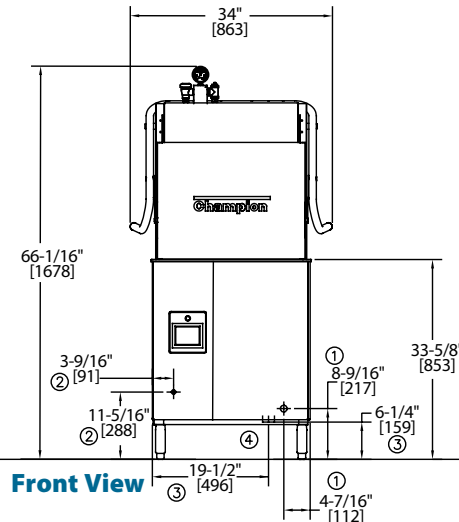
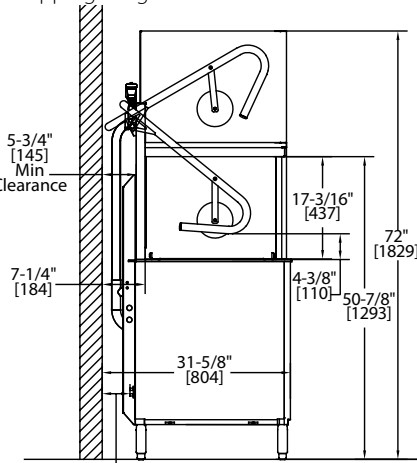
The Dishwashing Machine Specialists

DH-6000

High Temperature Hood-type Dishwashing Machine

Shipping weight crated: 300 lbs.

Dimensions shown in inches and [mm]



UTILITIES	
1	Electrical Machine Connection (See Electrical Box)
2	Hot Water 3/4" NPT Hot Water 110° - 140°F 45 PSI dynamic min. incoming Final rinse 18 PSI
3	Drain 1" NPT Connection Gravity flow, 15 GRM max flow
4	Drain Water Tempering 1/2" Cold water line with customer supplied cut-off valve (optional)
5	Integrated Detergent System Detergent bottle supply connections (optional)

Warning: Plumbing, electrical connections should be made by qualified personnel who will observe all the applicable plumbing, sanitary and safety codes and the National Electrical Code.

Note: Optional Drain Tempering: 1/2" NPT cold water connection required. 1/2" NPT drain connection from back flow preventer to house drain. (FIELD INSTALLED and PLUMBED). Due to an ongoing value analysis program at Champion, specifications contained in this catalog are subject to change without notice.

Champion Industries, Inc.,
3765 Champion Blvd., NC 27105
336/661-1556 • Fax: 336/661-1979
ChampionIndustries.com

Machine & Built-in Booster (Standard)			
Voltage	Rated Amps	Minimum Supply Circuit Ampacity	Maximum Overcurrent Protective Device
208-240/60/1	77-68	100	100
208-240/60/3	46-41	60	60
480/60/3	20	30	30

Machine Only (two point electrical connection or no built-in booster)			
Voltage	Rated Amps	Minimum Supply Circuit Ampacity	Maximum Overcurrent Protective Device
208-240/60/1	38-34	50	50
208-240/60/3	25-23	30	30
480/60/3	11	15	15

Booster Only (two point electrical connection)			
Voltage	Rated Amps	Minimum Supply Circuit Ampacity	Maximum Overcurrent Protective Device
208-240/60/1	39-34	50	50
208-240/60/3	21-18	25	25
480/60/3	9	15	15

Note: Water Hammer Arrestor (meeting ASSE-1010 standard or equivalent) to be supplied (by others) in common water supply line at service connection. Recommended water hardness to be 3 grains or less for optimal performance results.

SPECIFICATIONS				
Capacities				
Racks per hr. (NSF rated)	60			
Wash tank (gal.)	10			
Motor horsepower	2 HP			
Water consumption				
Gal. per hr. (max. use)	39			
Gal. per rack	0.73			
Temperature °F				
Wash	150			
Rinse	180			
Heating				
Tank heat, electric	5.2 kW			
Electric Booster	7.5 kW			
	Dish-washer Mode	Pot & Pan Mode		
Selectable cycle times in minutes	1	2	4	6
Time cycles in seconds				
Wash	36	94	214	334
Rinse	8	10	10	10
Sanitary Dwell	16	16	16	16
Total	60	120	240	360

an Ali Group Company



The Spirit of Excellence



Project _____

Item _____

Quantity _____

CSI Section 11400

DynaStar®

High Temperature Sanitizing Door-type

Standard Features

- ▶ Built-in 40-70 °F rise booster heater with Sani-Sure™ final rinse system ensures proper rinse water temperature
- ▶ Adjustable rinse system
 - Econo uses 0.70 gallons per rack
 - Turbo uses 0.89 gallons per rack
- ▶ Pumped rinse for consistent rinse pressure
- ▶ Automatic tank fill
- ▶ Door-actuated start
- ▶ Three (3) selectable timed cycles
- ▶ Digital LED display
- ▶ Onboard service diagnostics
- ▶ Delime cycle
- ▶ 17 1/2" (445 mm) vertical chamber clearance
- ▶ Triple wash arm provides consistent and reliable washing performance
- ▶ Specially designed stainless steel nozzles provide superior cleaning action
- ▶ Interchangeable upper and lower wash/rinse arms
- ▶ 1 HP stainless steel wash pump motor
- ▶ Vent fan control shuts vent fan off when machine is idle
- ▶ Interchangeable scrap baskets
- ▶ Single point connections for all utilities
- ▶ Field convertible from straight through to corner and vice versa (kit required)
- ▶ Field convertible from 3-phase to single phase and vice versa (kit required)
- ▶ Low watt density electric wash tank heater
- ▶ Hi-limit thermostat and low water protection
- ▶ Detergent/rinse additive signal connection fuse box
- ▶ Front and side stainless steel dress panels
- ▶ Adjustable bullet feet
- ▶ Durable stainless steel construction



DynaStar®

Specification Statement

Specified unit will be a Jackson DynaStar high temperature sanitizing door-type dishwasher, rated to NSF/ANSI Standard 3 by ETL Sanitation. Unit will be ENERGY STAR® certified. Unit will be rated for 62 racks per hour, 0.70 gallons per rack, and will include a built-in 40-70 °F rise booster heater with Sani-Sure™ final rinse system, three (3) selectable timed cycles, solid-state controls with digital LED temperature/operator display and service diagnostics. Unit will have an adjustable rinse system, Econo Rinse uses 0.70 gallons per rack; Turbo Rinse uses 0.89 gallons per rack. Other features include automatic tank fill, delime cycle, triple wash arm, pumped final rinse, vent fan control, and 1 HP stainless steel wash pump motor. Constructed of durable stainless steel with adjustable bullet feet.

1-year parts and labor warranty.

Options & Accessories

- ▶ 460v Electrical
- ▶ Single Phase
- ▶ Drain Water Tempering Kit
- ▶ Water Hammer Arrestor
- ▶ Door Interlock
- ▶ False Panel (for corner installations)
- ▶ Flanged Feet
- ▶ Security Package
- ▶ Scaltrol
- ▶ Replacement Cartridge for Scaltrol
- ▶ 36-Compartment Rack
 - 4-1/8" tall (105 mm)
 - 5-5/8" tall (143 mm)
 - 7" tall (178 mm)
- ▶ Combination Rack
- ▶ Peg Rack





Cleanability

Our triple wash arm is engineered to focus more water on the dishes for superior cleaning performance. Our adjustable rinse system keeps you in control - choose Econo or Turbo based on the soil level of each load.

Operation

Easy-to-read digital controls, a full wrap tubular handle, and a door-activated drain closure make operation of the DynaStar a breeze.

Serviceability

Ease of serviceability is important to Jackson, and with that in mind, the DynaStar was designed to utilize common Jackson parts, as well as making service access easy. All service parts can be accessed while the unit is in place - no need to pull it from the wall or disconnect tables.



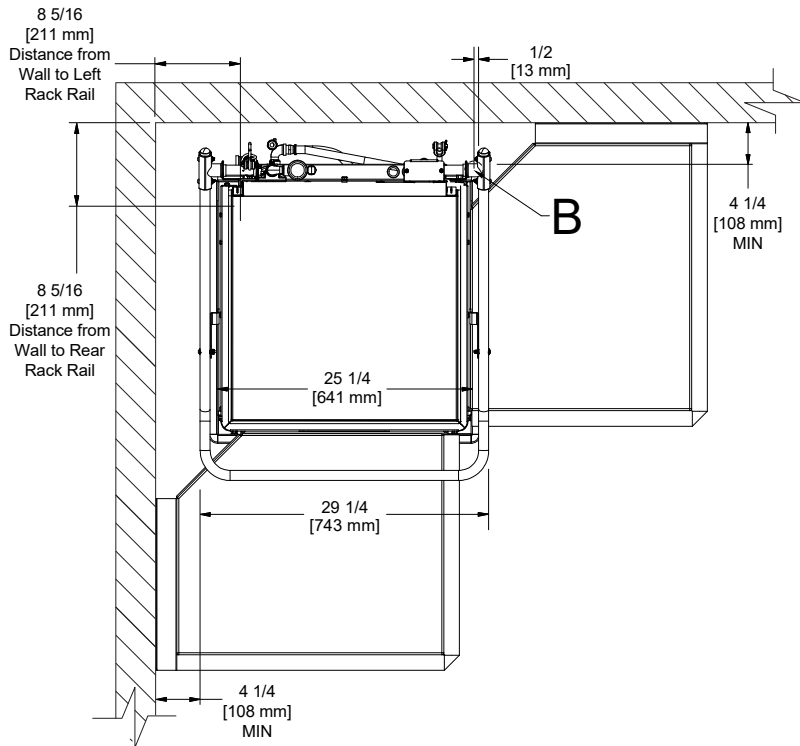
Digital LED Display



Triple Wash Arm



Interchangeable Scrap Baskets

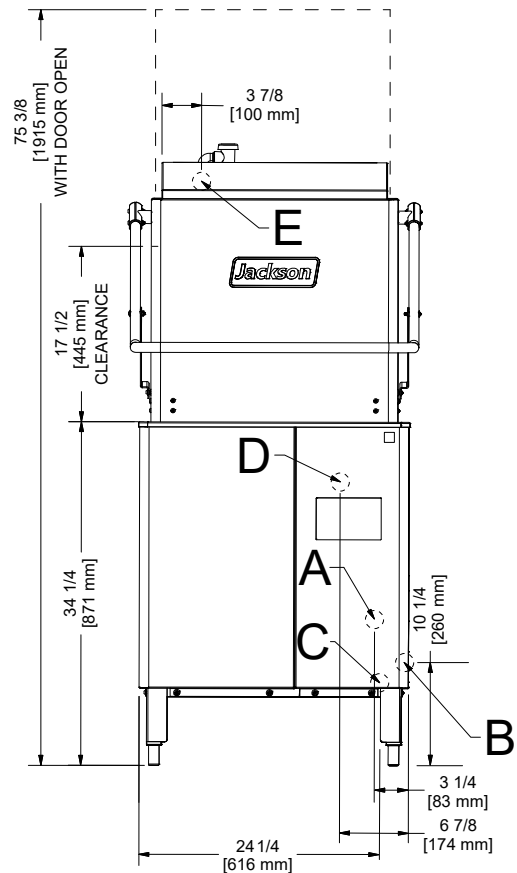
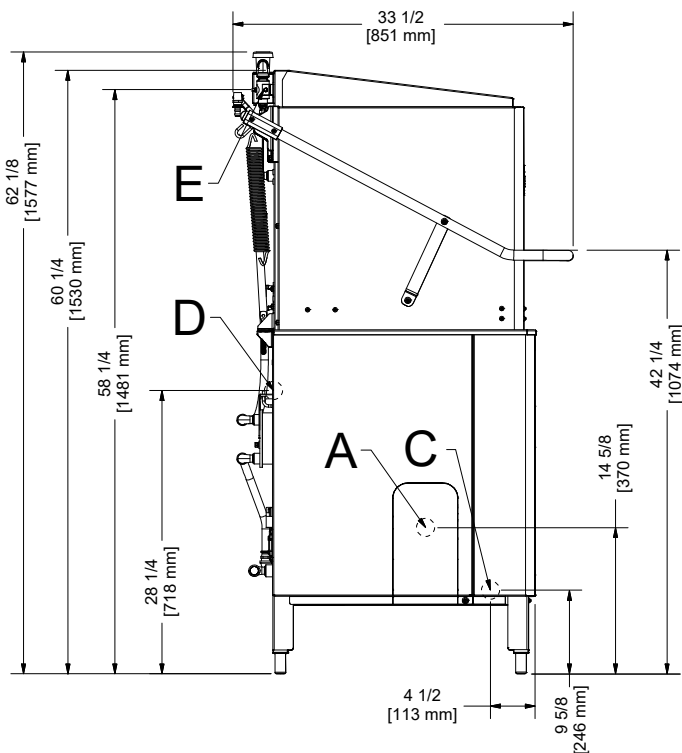


LEGEND

- A - Drain Connection (1 1/2" NPT)
- B - Water Inlet (1/2" NPT)
- C - Electrical Connection
- D - Detergent Connection
- E - Rinse-aid Connection

All dimensions from floor can be increased 1 1/8" using the machine's adjustable feet.

Dish tables are stationary, so the machine must be moved until rack rails line-up properly. As a result, distances from wall to rack rails might vary.





Warewashing Systems

DynaStar®

High Temperature Sanitizing Door-type

Operating Capacity (Cycle I)

Racks per Hour	62 (57)*
Dishes per Hour	1,550
Glasses per Hour	2,232

Operating Temperature

Wash Temperature (minimum)	150 °F/66 °C
Rinse Temperature (minimum)	180 °F/82 °C

Operating Cycle (seconds)

	Wash	Rinse	Dwell	Total Cycle
Cycle I	40	11	07	58
Cycle II	90	11	07	108
Cycle III	220	11	07	238

Water Consumption

Gallons per Rack (Econo rinse)	0.70 (2.7 L)
Gallons per Rack (Turbo rinse)	0.89 (3.4 L)
Gallons per Hour (Econo rinse)	43.40 (164.3 L)
Gallons per Hour (Econo rinse)**	39.90 (151.0 L)
Gallons per Hour (Turbo rinse)	55.18 (208.9 L)
Gallons per Hour (Turbo rinse)**	50.73 (192.0 L)
Wash Tank Capacity (gallons)	8.0 (30.3 L)
Booster Tank Capacity (gallons)	1.66 (6.3 L)

Water Requirements

Incoming Water Temperature	110 °F/43 °C
Flow Pressure (PSI)	10 ± 2
Incoming Water Connection (NPT)	1/2"
Drain Connection (NPT)	1 1/2"

Electrical Specifications

Wash Pump Motor (HP)	
208v	1
230v	1
460v	3/4
Wash Tank Heater (kW)	
208v	4.1
230v	5.0
460v	5.0
Rinse Tank Heater (kW)	
208v	9.0
230v	11.0
460v	9.2

Model	Power Supply	Total Load	Minimum Circuit Ampacity	Maximum Overcurrent Protection
70 °F Rise	208/60/3	42.2 A	43.4 A	45.0 A
	230/60/3	46.0 A	47.3 A	50.0 A
	460/60/3	19.8 A	20.2 A	25.0 A
	208/60/1	68.8 A	70.1 A	75.0 A
	230/60/1	75.5 A	76.7 A	80.0 A
	No Booster*	208/60/3	16.4 A	17.6 A
	230/30/3	17.6 A	18.8 A	20.0 A
	460/60/3	7.5 A	7.8 A	15.0 A
	208/60/1	24.7 A	25.9 A	30.0 A
	230/60/1	26.8 A	28.0 A	30.0 A

*The DynaStar with no booster (DynaStar W/O) does not have a pumped rinse. A pressure regulator is recommended for this model only and **should not be used** on the DynaStar with an onboard booster heater.

Dimensions

Width	28 3/4" (731 mm)
Depth	34" (863 mm)
Height	62 1/8" (1577 mm)
Height with Door Open	75 3/8" (1915 mm)
Inside Clearance Height	17 1/2" (445 mm)
Wall Clearance	4 1/4" (108 mm)
Drain Height	14 5/8" (370 mm)

Shipping Details

Shipping Weight	366 lbs (166 kg)
Shipping Width	33" (838 mm)
Shipping Depth	42" (1067 mm)
Shipping Height	66 1/2" (1689 mm)
Shipping Cube	53.34 cu ft
Shipping Class	150

Advisory: Jackson WWS, Inc. **DOES NOT** endorse "Tankless On-Demand" water heaters for use with our dishmachines. Jackson WWS, Inc. **DOES** endorse, and highly recommends, standard "tank" style water heaters, sized to properly handle the water heating requirements of the facility.

*Racks per hour calculated with NSF suggested load time of :05 for door-type (straight thru) dishmachines.

**Gallons per hour calculated with NSF suggested load time of :05 for door-type (straight thru) dishmachines.

Contact Jackson

07610-004-69-78 [11/30/21]

Address

6209 N U.S. Highway 25E
Gray, Kentucky 40734

Telephone & Fax

T 888.800.5672
F 606.523.1799

Email

customer.service@jacksonwws.com



JACKSONWWS.COM



JACKSON WAREWASHING SYSTEMS



JACKSON WWS

We reserve the right to change specifications in this document without incurring any obligation for equipment previously or subsequently sold.



Project _____

Item _____

Quantity _____

CSI Section 11400

TempStar®

High Temperature Sanitizing Door-type

Standard Features

- ▶ Built-in 70 °F (38.9 °C) rise booster heater with Sani-Sure™ final rinse system; 40 °F (22.2 °C) rise booster heater is available at no cost and must be specified at time of order
- ▶ Automatic tank fill
- ▶ Door-actuated start
- ▶ Four (4) selectable timed cycles
- ▶ Top-mounted controls for ease of operation
- ▶ Delime/manual wash mode
- ▶ 17-1/4" (438 mm) door opening accepts 18" (457 mm) trays
- ▶ Specially designed stainless steel nozzles provide superior cleaning action
- ▶ Interchangeable wash/rinse arms screw out for simple cleanup
- ▶ Door switch
- ▶ 1 HP self-draining stainless steel wash pump
- ▶ Vent fan control shuts vent fan off when machine is idle
- ▶ Large scrap basket
- ▶ Single point connections for all utilities
- ▶ Field convertible from straight through to corner and vice versa (kit required)
- ▶ Field convertible from 3-phase to single-phase and vice versa (kit required)
- ▶ Low watt density electric wash tank heater
- ▶ Hi-limit thermostat and low water protection
- ▶ Detergent/rinse additive signal connection fuse box
- ▶ Front stainless steel dress panel
- ▶ Uses standard 20" X 20" (508 mm X 508 mm) racks
- ▶ Adjustable bullet feet
- ▶ Durable stainless steel construction



TempStar®

Specification Statement

Specified unit will be a Jackson TempStar high temperature sanitizing door-type dishwasher, rated by ETL Sanitation to NSF/ANSI Standard 3. Unit will be ENERGY STAR® certified. Unit to be rated for 63 racks per hour, 0.89 gallons per rack, and will include a built-in 70 °F rise (40 °F rise optional) booster heater with Sani-Sure™ final rinse system, four (4) selectable timed cycles, and top mounted controls. Other features include automatic tank fill, delime mode, vent fan control, interchangeable wash/rinse arms, and 1 HP stainless steel wash pump motor. Constructed of durable stainless steel with adjustable bullet feet.

1-year parts and labor warranty.

Options & Accessories

- ▶ 40 °F (22.2 °C) rise booster heater (must be specified on P.O.)
- ▶ 460V Electrical
- ▶ Single Phase
- ▶ Pressure Regulator
- ▶ Drain Water Tempering Kit
- ▶ Water Hammer Arrestor
- ▶ Flanged Feet
- ▶ Door Interlock
- ▶ False Panel (for corner installations)
- ▶ Security Package
- ▶ Scallrol
- ▶ Replacement Cartridge for Scallrol
- ▶ 36-Compartment Rack 4-1/8" tall (105 mm)
- ▶ 5-5/8" tall (143 mm)
- ▶ 7" tall (178 mm)
- ▶ Combination Rack
- ▶ Peg Rack





TempStar®

Whether you are washing a delicate wine glass, fine china, or a greasy pot, the TempStar cleans them all! Four wash cycle selections let you customize what is best for your rack load. This robust high temperature sanitizing dishmachine boasts an automatic cycle and Jackson's exclusive Sani-Sure™ final rinse system, ensuring proper rinse temperature/sanitization every cycle. Best of all, like all Jackson products, the TempStar provides Clean the First Time® results.

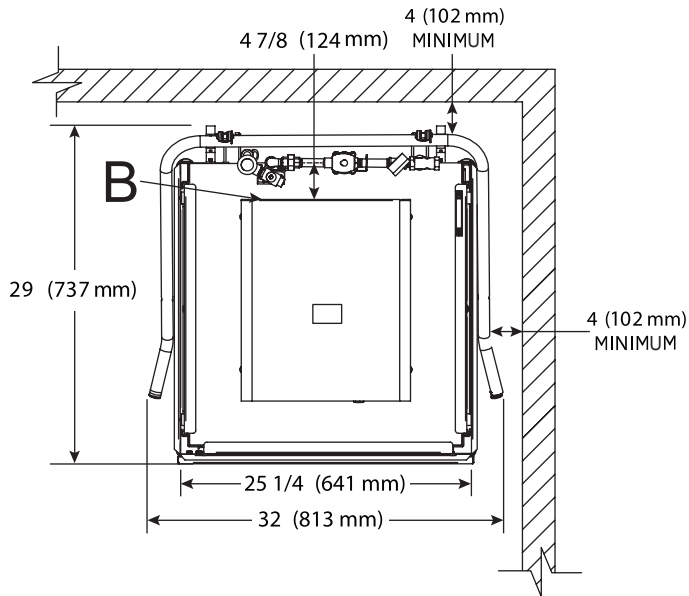
OPERATING CYCLE TIMES (Seconds) | OPERATING CAPACITY (Racks per Hour)

OPERATING CYCLE	CYCLE TIME	RACKS PER HOUR	GALLONS PER HOUR
Normal	:57	63	56.07
Medium	:117	29	25.81
Heavy	:177	20	17.80
Extra Heavy	:297	12	10.68

High Temp

0.89

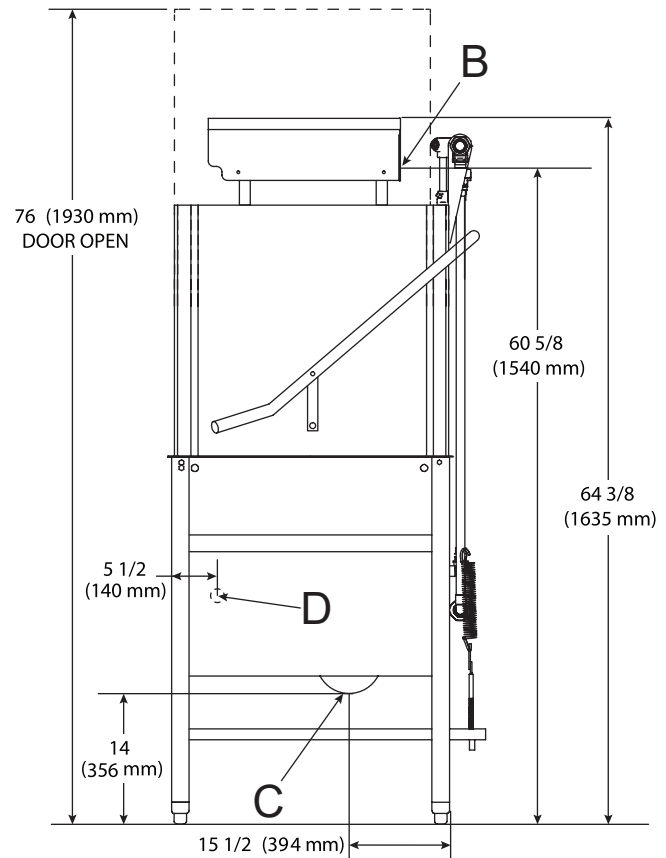
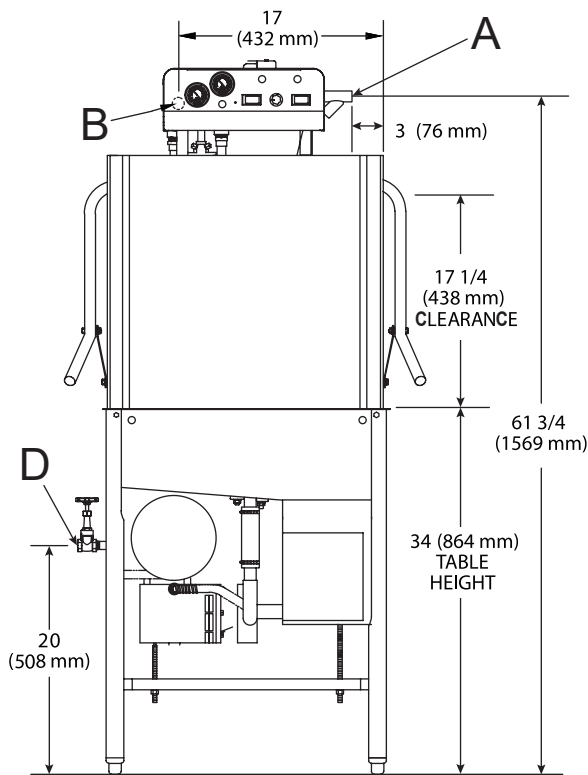
63



LEGEND

- A - Water Inlet (1/2" NPT)
- B - Electrical Connection Point
- C - Drain (1 1/2" NPT)
- D - Optional Steam Connection (3/4" NPT)

All dimensions from the floor can be increased 1 1/8" using the machine's adjustable feet.





Warewashing Systems

TempStar®

High Temperature Sanitizing Door-type

Operating Capacity (Normal Cycle)

Racks per Hour	63 (58)*
Dishes per Hour	1,575
Glasses per Hour	2,268

Operating Temperature

Wash Temperature (minimum)	150 °F/66 °C
Rinse Temperature (minimum)	180 °F/82 °C

Operating Cycle (seconds)

	Wash	Rinse	Dwell	Total Cycle
Normal	40	10	07	57
Medium	100	10	07	117
Heavy	160	10	07	177
Extra Heavy	280	10	07	297

Water Consumption

Gallons per Rack	0.89 (3.4 L)
Gallons per Hour	56.07 (212.3 L)
Gallons per Hour**	51.62 (195.4 L)
Wash Tank Capacity (gallons)	8.00 (30.3 L)
Booster Tank Capacity (gallons)	2.00 (7.6 L)

Water Requirements

Incoming Water Temperature	
40 °F Rise	140 °F/60 °C
70 °F Rise	110 °F/43 °C
No Booster	180 °F/82 °C
Flow Pressure (PSI)	10 ± 2
Incoming Water Connection (NPT)	1/2"
Drain Connection (ID)	1 1/2"

Electrical Specifications

Wash Pump Motor (HP)		
208V/230V	1	
460V	3/4	
Wash Tank Heater (kW)		
208V	4.1	
230V/460V	5.0	
Rinse Tank Heater (kW)		
	40 °F Rise	70 °F Rise
208V	9.0	10.5
230V/460V	11.0	12.9

Model	Power Supply	Total Load	Minimum Circuit Ampacity	Maximum Overcurrent Protection
40 °F Rise	208/60/3	41.4 A	42.6 A	45.0 A
	230/60/3	45.2 A	46.5 A	50.0 A
	460/60/3	21.4 A	21.7 A	25.0 A
	208/60/1	68.0 A	69.3 A	70.0 A
70 °F Rise	230/60/1	74.7 A	75.9 A	80.0 A
	208/60/3	45.6 A	46.8 A	50.0 A
	230/60/3	49.9 A	51.2 A	55.0 A
	460/60/3	23.7 A	24.0 A	25.0 A
No Booster	208/60/1	75.2 A	76.5 A	80.0 A
	230/60/1	82.7 A	83.9 A	85.0 A
	208/60/3	16.4 A	17.6 A	20.0 A
	230/30/3	17.6 A	18.8 A	20.0 A
	460/60/3	7.5 A	7.8 A	15.0 A
	208/60/1	24.7 A	25.9 A	30.0 A
	230/60/1	26.8 A	28.0 A	30.0 A

Dimensions

Width	32" (813 mm)
Depth	29" (737 mm)
Height	64 3/8" (1635 mm)
Height with Door Open	76" (1930 mm)
Inside Clearance Height	17 1/4" (438 mm)
Wall Clearance	
Rear	4" (102 mm)
Side (corner installation)	4" (102 mm)
Drain Height	14" (356 mm)
Weight	238 lbs (108 kg)

Shipping Details

Shipping Weight	263 lbs (120 kg)
Shipping Width	33" (838 mm)
Shipping Depth	42" (1067 mm)
Shipping Height	72 1/2" (1842 mm)
Shipping Cube	58.15 cu ft
Shipping Class	200

Advisory: Jackson WWS, Inc. DOES NOT endorse "Tankless On-Demand" water heaters for use with our dishmachines. Jackson WWS, Inc. DOES endorse, and highly recommends, standard "tank" style water heaters, sized to properly handle the water heating requirements of the facility.

*Racks per hour calculated with NSF suggested load time of :05 for door-type dishmachines (straight through)

**Gallons per hour calculated with NSF suggested load time of :05 for door type dishmachines (straight through)

Contact Jackson

07610-002-66-59 [03/21/23]

Address

6209 N U.S. Highway 25E
Gray, Kentucky 40734

Telephone & Fax

T 888.800.5672
F 606.523.1799

Email

customer.service@jacksonwws.com



JACKSONWWS.COM



JACKSON WAREWASHING SYSTEMS



JACKSON WWS

We reserve the right to change specifications in this document without incurring any obligation for equipment previously or subsequently sold.