

PLAT OF SURVEY

A 10.82 ACRE TRACT OF LAND, BEING PART OF A 74.78 ACRE TRACT OF LAND, CALLED TRACT 1, AND PART OF A 28.79 ACRE TRACT OF LAND, CALLED TRACT 2, LYING IN THE E.A. JASPER SURVEY NO. 278, ABSTRACT NO. 506, ATASCOSA COUNTY, TEXAS

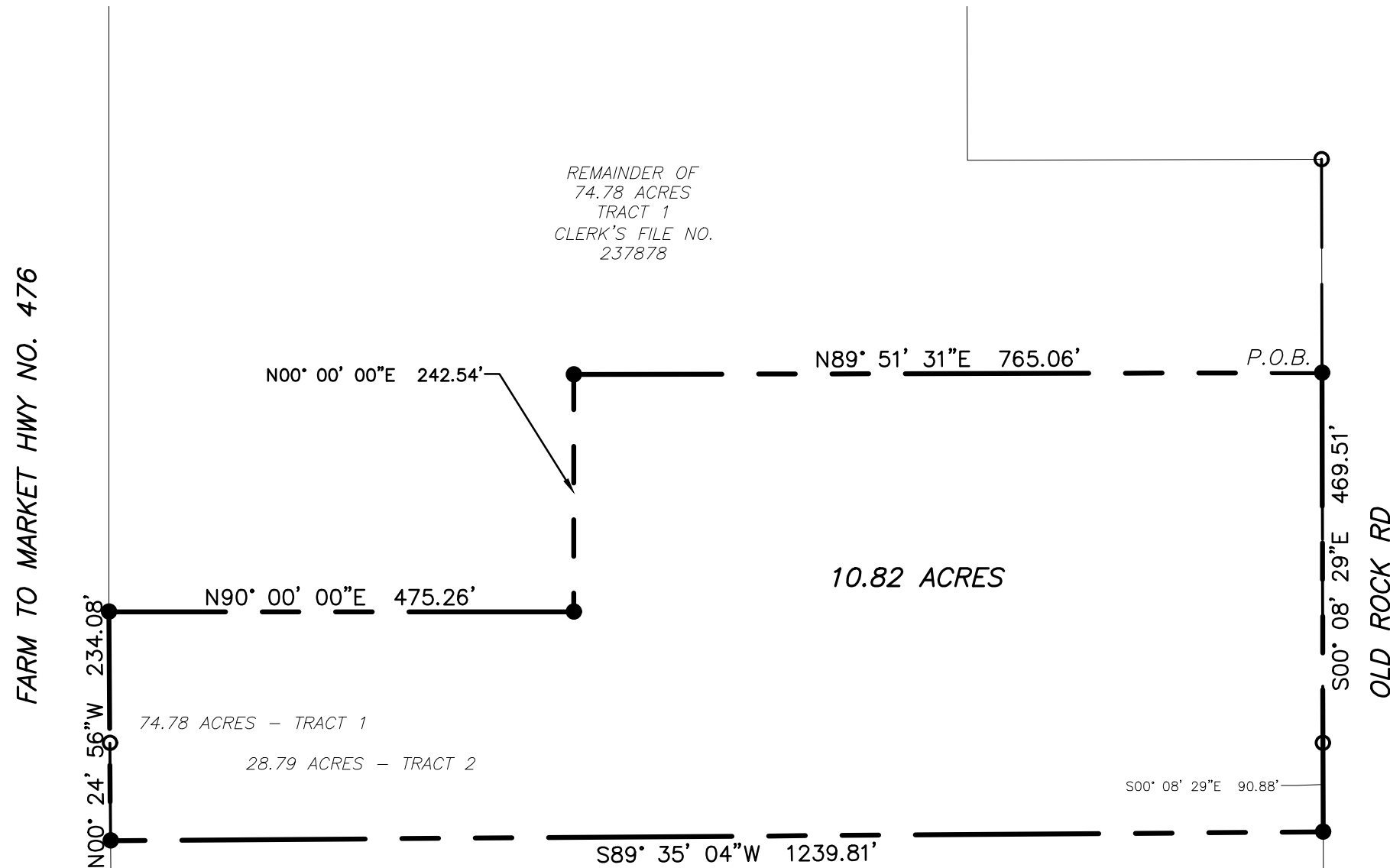


1" = 150'

THE BASIS OF BEARING ON THIS PLAT IS GRID NORTH, TEXAS STATE PLANE COORDINATE SYSTEM, NAD 83 (2011), SOUTH CENTRAL ZONE

LEGEND

- Set 5/8 inch steel rod monument with cap stamped Rakowitz Engineering & Surveying
- Found previously set 5/8 inch steel rod monument with cap stamped Rakowitz Engineering & Surveying
- Boundary line
- - - Adjoiner



REMAINDER OF
74.78 ACRES
TRACT 1
CLERK'S FILE NO.
237878

10.82 ACRES

74.78 ACRES - TRACT 1

28.79 ACRES - TRACT 2

10.65 ACRES
SURVEYED THIS
SAME DAY

Prepared for:
Ann King

REFERENCES:

DEED: Clerk's File No. 242440, OPR
Clerk's File No. 237878, OPR

THIS SURVEY WAS DONE WITHOUT THE
BENEFIT OF A TITLE COMMITMENT,
VISIBLE ENCROACHMENTS ARE SHOWN

I, Walt F. Rakowitz, being a Registered Professional Land Surveyor, registered in the State of Texas, do hereby certify that this plat was prepared from an actual survey done by me or under my direct supervision, and that to the best of my knowledge and belief it is a true and correct representation of said survey.



Walt F. Rakowitz



Date of survey: July 18, 2024
Job No. 24-3336