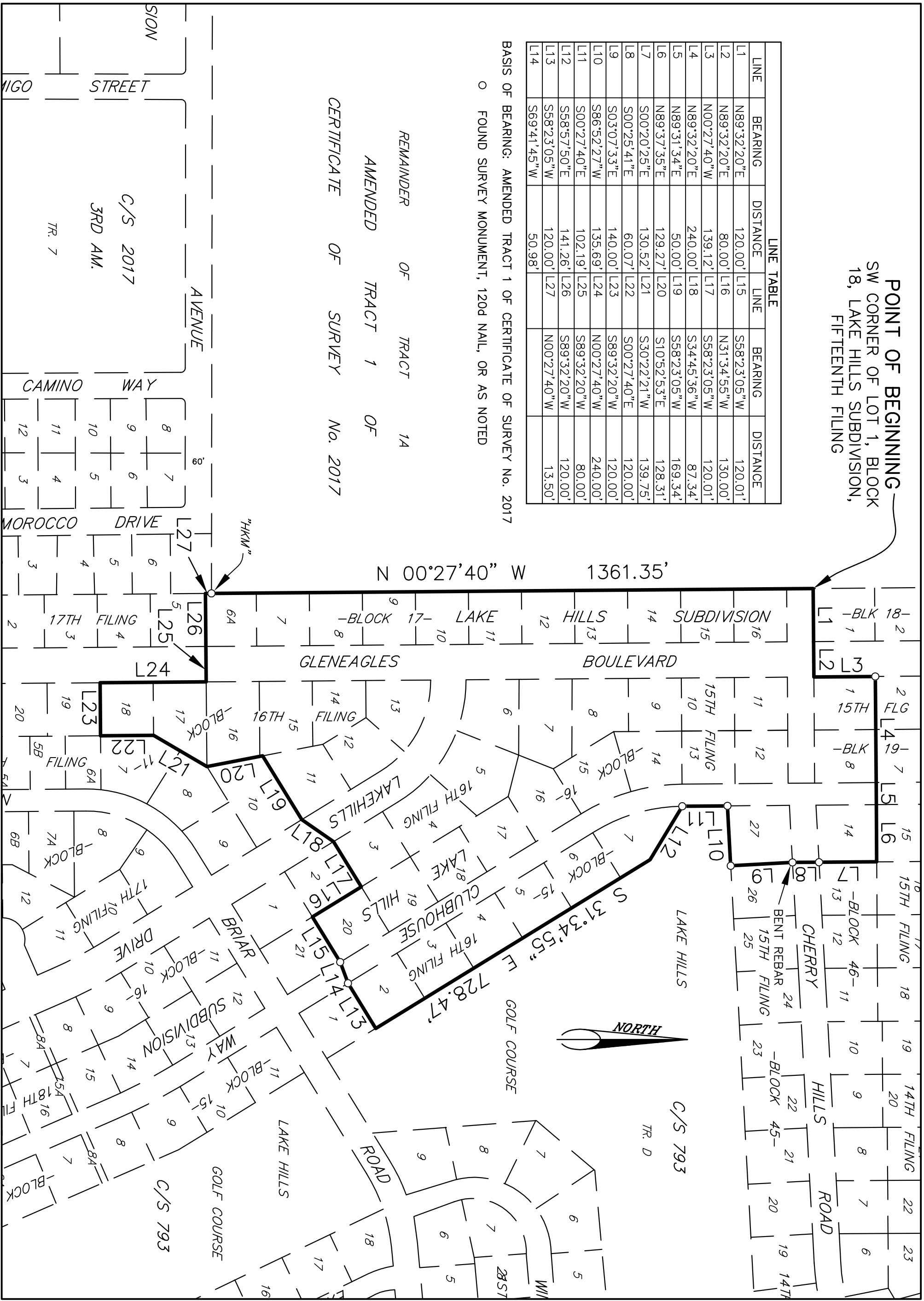


POINT OF BEGINNING
 SW CORNER OF LOT 1, BLOCK
 18, LAKE HILLS SUBDIVISION,
 FIFTEENTH FILING

LINE TABLE					
LINE	BEARING	DISTANCE	LINE	BEARING	DISTANCE
L1	N89°32'20"E	120.00'	L15	S58°23'05"W	120.01'
L2	N89°32'20"E	80.00'	L16	N31°34'55"W	130.00'
L3	N00°27'40"W	139.12'	L17	S58°23'05"W	120.01'
L4	N89°32'20"E	240.00'	L18	S34°45'36"W	87.34'
L5	N89°31'34"E	50.00'	L19	S58°23'05"W	169.34'
L6	N89°37'35"E	129.27'	L20	S10°52'53"E	128.31'
L7	S00°20'25"E	130.52'	L21	S30°22'21"W	139.75'
L8	S00°25'41"E	60.07'	L22	S00°27'40"E	120.00'
L9	S03°07'33"E	140.00'	L23	S89°32'20"W	120.00'
L10	S86°52'27"W	135.69'	L24	N00°27'40"W	240.00'
L11	S00°27'40"E	102.19'	L25	S89°32'20"W	80.00'
L12	S58°57'50"E	141.26'	L26	S89°32'20"W	120.00'
L13	S58°23'05"W	120.00'	L27	N00°27'40"W	13.50'
L14	S69°41'45"W	50.98'			

BASIS OF BEARING: AMENDED TRACT 1 OF CERTIFICATE OF SURVEY No. 2017
 O FOUND SURVEY MONUMENT, 120D NAIL, OR AS NOTED

REMAINDER OF TRACT 14
 AMENDED TRACT 1 OF
 CERTIFICATE OF SURVEY No. 2017



CAD: KNO/ANDB
 DATE: 11/03/09
 REVISIONS:
 APPROVED BY:
 QUALITY ASSURANCE:
 SCALE: 1"=200'
 FILE: GOLFHOUSE BOUNDARY 4
 PROJECT NO.: 78165.B1
 SHEET 1 OF 1

SID 1389
 PROVIDING WATER, SANITARY SEWER, STORM DRAIN AND
 SURFACE IMPROVEMENTS TO PORTIONS OF LAKE HILLS SUBDIVISION
 BILLINGS, MONTANA
 BOUNDARY EXHIBIT

Empty rectangular boxes for stamps or signatures.

SANDERSON STEWART
 www.sandersonstewart.com