

PRELIMINARY PLAT OF MILLER CROSSING SUBDIVISION, THIRD FILING

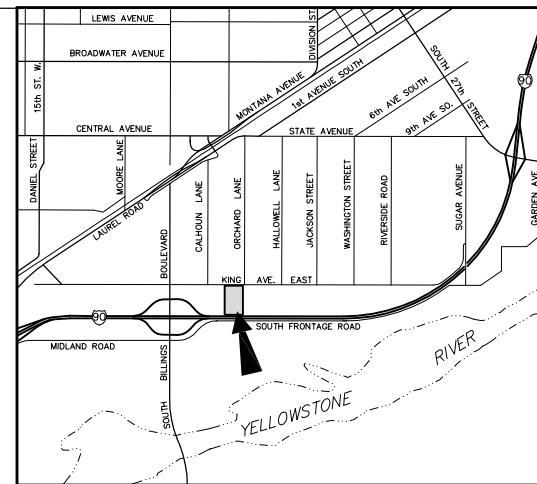
BEING LOT 2A-4 OF AMENDED PLAT OF LOT 2A OF AMENDED
LOTS 2, 3, 4, & 5, BLOCK 1, MILLER CROSSING SUBDIVISION
SITUATED IN THE NW1/4 OF SECTION 16, T. 1 S., R. 26 E., P.M.M.
IN THE CITY OF BILLINGS, YELLOWSTONE COUNTY, MONTANA

PREPARED FOR : SAM'S RETAIL BUSINESS TRUST

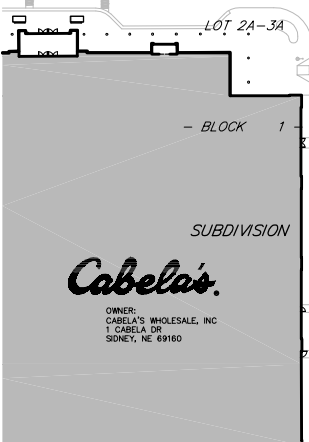
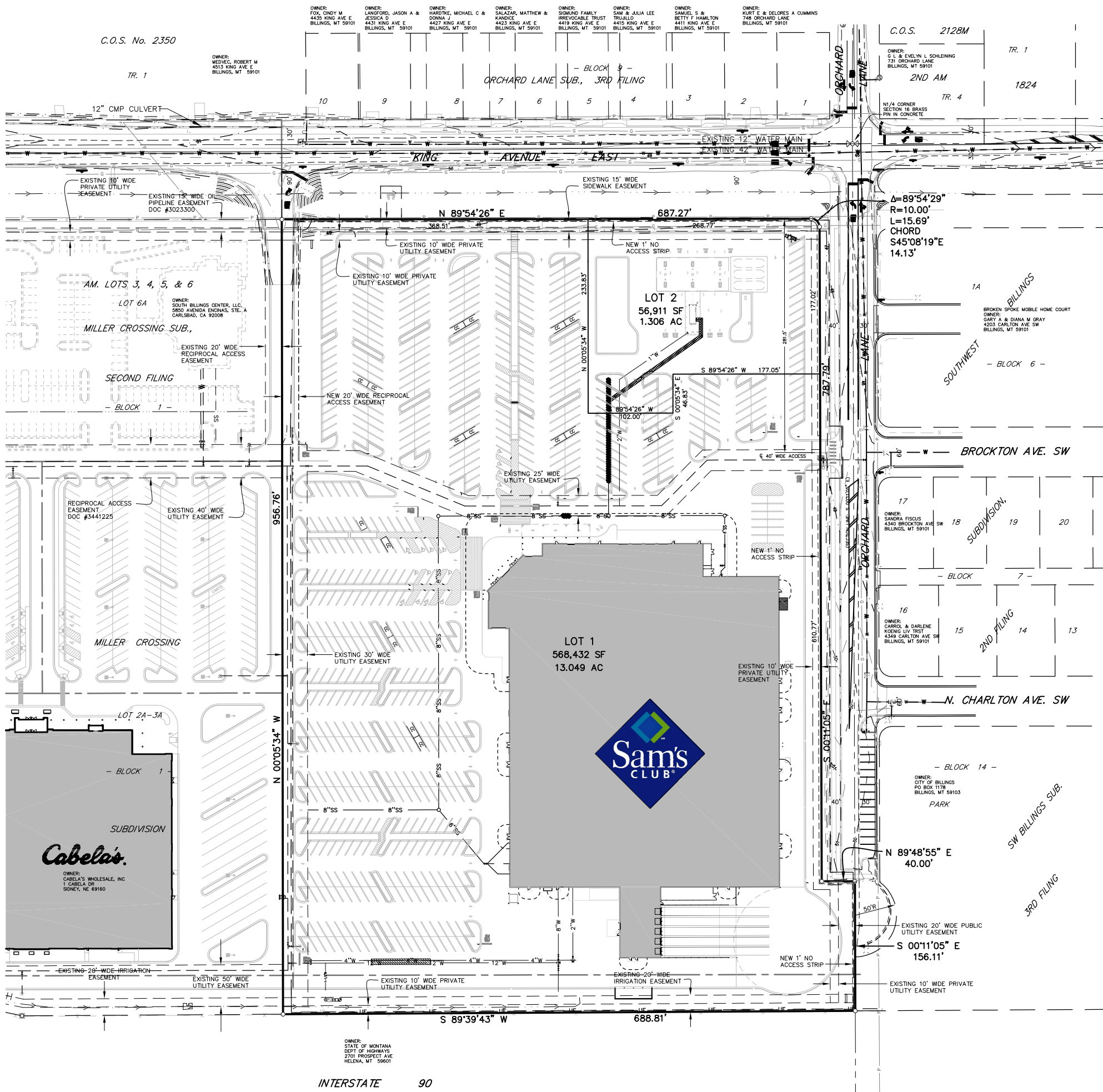
OCTOBER, 2009

PREPARED BY : SANDERSON STEWART 

BILLINGS, MONTANA



VICINITY MAP
NOT TO SCALE



PLAT DATA

GROSS AREA	=	14.355 AC
NET AREA	=	14.355 AC
NUMBER OF LOTS	=	2
MINIMUM LOT SIZE	=	1.306 AC
MAXIMUM LOT SIZE	=	13.049 AC
LINEAL FEET OF STREETS	=	NA
PARKLAND REQUIREMENT	=	NA
EXISTING ZONING	=	ENTRYWAY GENERAL COMMERCIAL
SURROUNDING ZONING:		
NORTH	=	RESIDENTIAL 7000
SOUTH	=	I-90 & PLANNED UNIT DEVELOPMENT
EAST	=	RESIDENTIAL MULTI-FAMILY & PUBLIC
WEST	=	ENTRYWAY GENERAL COMMERCIAL
EXISTING LAND USE	=	COMMERCIAL DEVELOPMENT
PROPOSED LAND USE	=	COMMERCIAL DEVELOPMENT

