

PRELIMINARY AMENDED PLAT OF LOT 4A, BLOCK 5,
HOGAN HOMESTEAD SUBDIVISION

SITUATED IN THE NW1/4 OF SECTION 18, T. 1 S., R. 26 E., P.M.M.

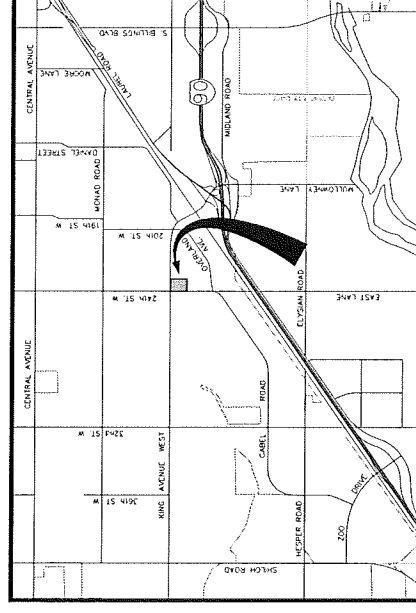
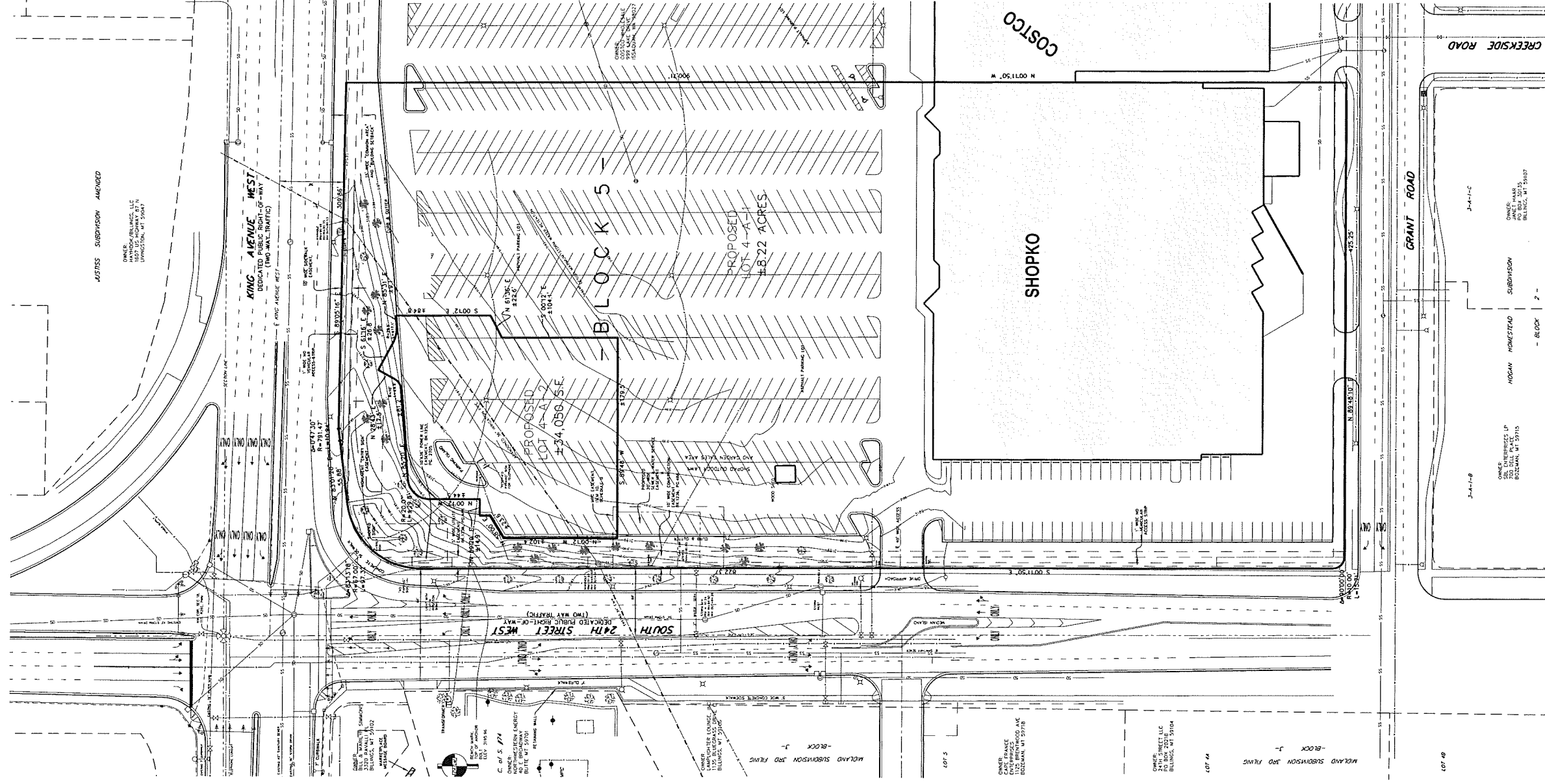
CITY OF BILLINGS, YELLOWSTONE COUNTY, MONTANA

PREPARED FOR : DEPIERRO REALTY ADVISORS

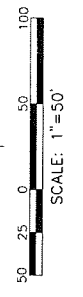
FEBRUARY 2010

PREPARED BY : SANDERSON STEWART

BILLINGS, MONTANA



VICINITY MAP
NOT TO SCALE



PLAT DATA

GROSS AREA	=	9.00 ACRES	=	HIGHWAY COMMERCIAL
NET AREA	=	9.00 ACRES	=	RESIDENTIAL PROFESSIONAL
NUMBER OF LOTS	=	TWO	=	HIGHWAY COMMERCIAL
MINIMUM LOT SIZE	=	±34,050 Sq. Ft	=	HIGHWAY COMMERCIAL
MAXIMUM LOT SIZE	=	±8.22 ACRES	=	CONTROLLED INDUSTRIAL
LINEAL FEET OF STREETS	=	0	=	COMMERCIAL
PARKLAND REQUIREMENT	=	NONE	=	
EXISTING ZONING	=		=	
SURROUNDING ZONING:				
NORTH	=		=	
SOUTH	=		=	
EAST	=		=	
WEST	=		=	
EXISTING LAND USE	=		=	
PROPOSED LAND USE	=		=	