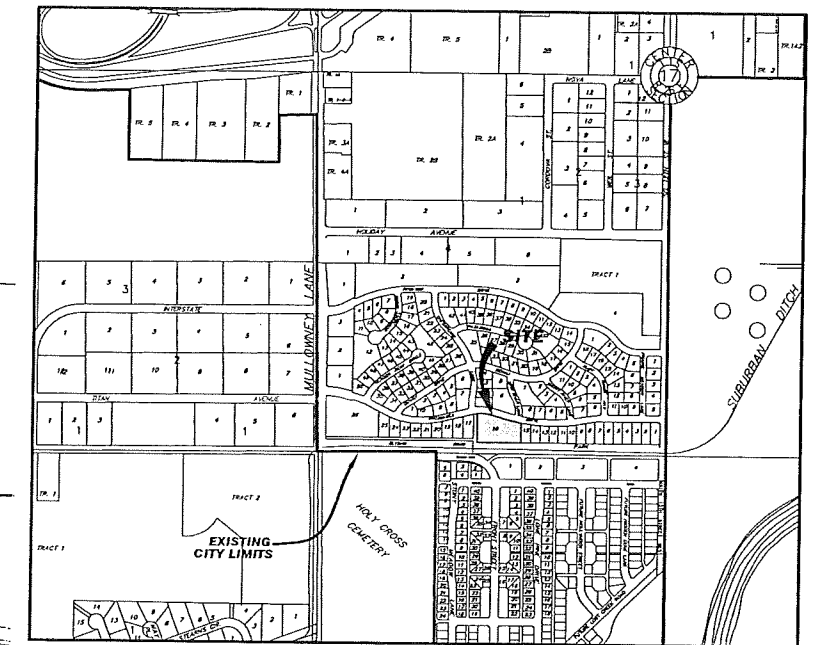
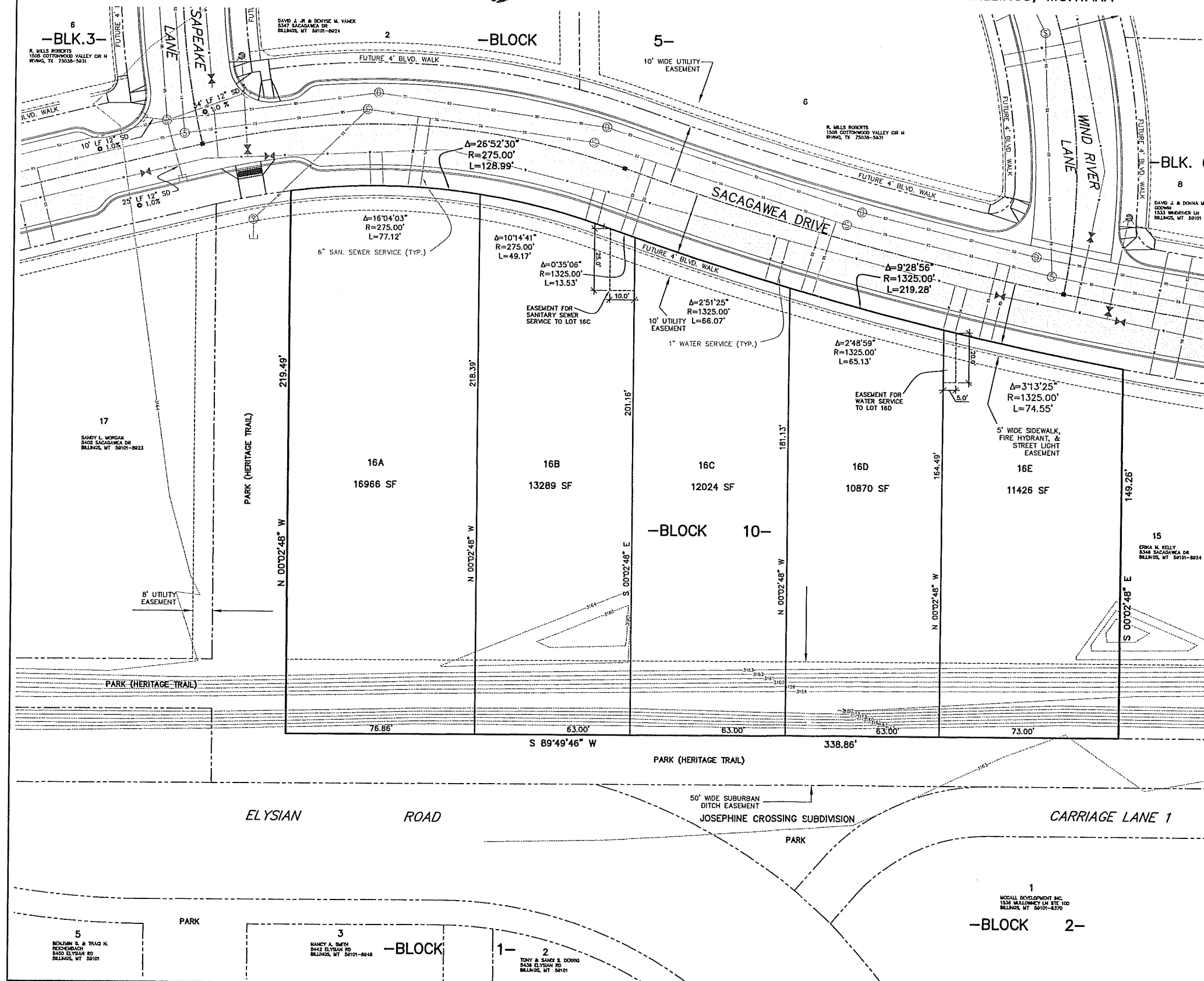


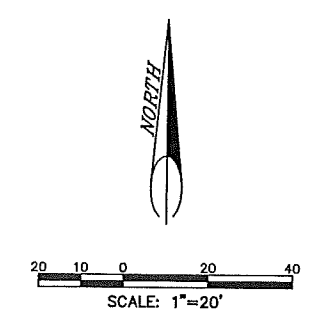
PRELIMINARY AMENDED PLAT OF LOT 16, BLOCK 10,  
**RIVERFRONT POINTE SUBDIVISION**  
 SITUATED IN THE S.W. 1/4 OF SECTION 17, T. 1 S., R. 26 E. P.M.M.  
 BILLINGS, YELLOWSTONE COUNTY, MONTANA

PREPARED FOR : RIVERFRONT POINT, L.L.C.  
 PREPARED BY : SANDERSON STEWART

APRIL, 2010  
 BILLINGS, MONTANA



VICINITY MAP  
 NOT TO SCALE



**PLAT DATA**

GROSS AREA	=	64575 S.F.
NET AREA	=	64575 S.F.
NUMBER OF LOTS	=	5
MINIMUM LOT SIZE	=	10870 S.F.
MAXIMUM LOT SIZE	=	16966 S.F.
LINEAL FEET OF STREETS	=	NONE
PARKLAND REQUIREMENT	=	NONE
PARKLAND DEDICATION	=	NONE
EXISTING ZONING	=	HIGHWAY COMMERCIAL
SURROUNDING ZONING:		
NORTH	=	HIGHWAY COMMERCIAL
SOUTH	=	PLANNED UNIT DEVELOPMENT
EAST	=	HIGHWAY COMMERCIAL
WEST	=	HIGHWAY COMMERCIAL
EXISTING LAND USE	=	VACANT
PROPOSED LAND USE	=	SINGLE FAMILY RESIDENTIAL