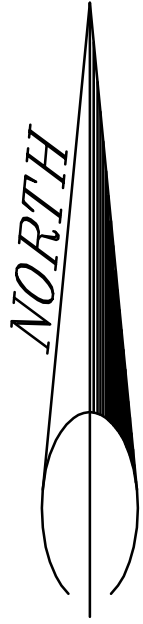
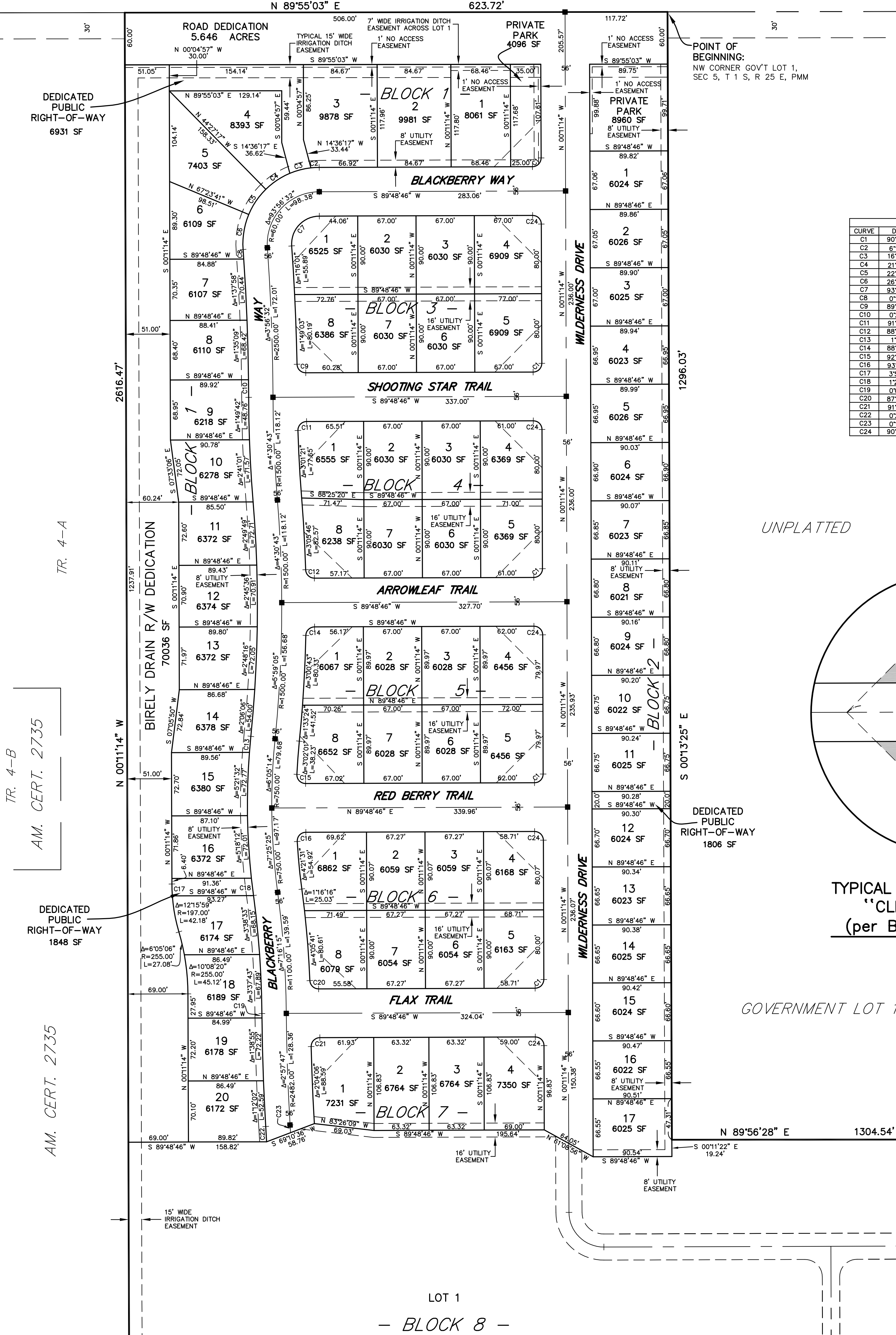


PLAT OF
TRAILS WEST SUBDIVISION, FIRST FILING
 BEING TRACTS 1A & 2A OF CORRECTED C.O.S. 3139 AND UNPLATTED LANDS
 SITUATED IN THE NE1/4 OF SECTION 5, T. 1 S., R. 25 E., P.M.M.,
 IN THE CITY OF BILLINGS, YELLOWSTONE COUNTY, MONTANA
 PREPARED FOR : TRAILS WEST DEVELOPMENT, LLC.
 PREPARED BY : SANDERSON STEWART

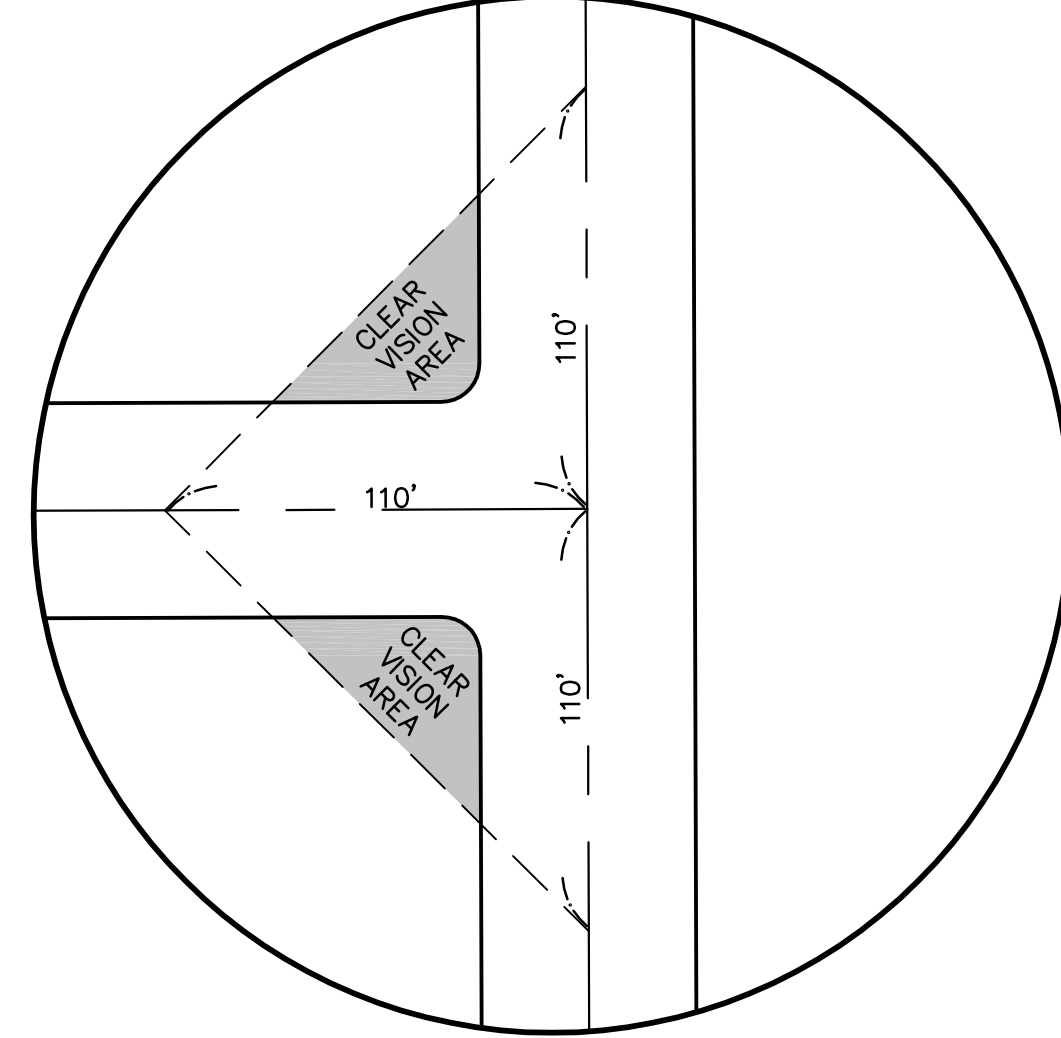


JANUARY, 2010
 SCALE: 1"=60'

FOXTAIL VILLAGE SUB 2nd FILING
 BIRELY DRAIN LOT 2, BLOCK 3
 FOXTAIL VILLAGE SUB LOT 1, BLOCK 8
GRAND AVENUE



CURVE	DELTA	RADIUS	LENGTH	BEARING	DISTANCE
C1	90°00'00"	10.00'	15.71'	N44°48'46"E	14.14'
C2	61°5'05"	88.00'	9.60'	S86°41'14"W	9.60'
C3	16°19'57"	88.00'	25.08'	S75°23'43"W	25.00'
C4	21°41'02"	88.00'	33.30'	S56°23'14"W	33.11'
C5	22°56'23"	88.00'	35.23'	S34°04'31"W	35.00'
C6	26°44'05"	88.00'	41.06'	S09°14'17"W	40.69'
C7	9°35'32"	32.00'	52.47'	S42°50'30"W	46.78'
C8	01°5'20"	2472.00'	11.02'	N04°00'08"W	11.02'
C9	89°08'32"	10.00'	15.56'	S45°36'58"E	14.04'
C10	0°28'06"	2472.00'	20.20'	N00°29'51"W	20.20'
C11	91°29'22"	10.00'	15.97'	S44°04'05"W	14.32'
C12	88°55'03"	10.00'	15.46'	S45°53'42"E	13.97'
C13	121°54"	778.00'	18.54'	S05°00'53"W	18.54'
C14	88°35'04"	10.00'	15.46'	S45°31'14"W	13.97'
C15	92°57'03"	10.00'	16.22'	S43°42'42"E	14.50'
C16	93°10'04"	10.00'	16.26'	S43°13'44"W	14.53'
C17	3°57'27"	197.00'	13.61'	S02°09'57"E	13.60'
C18	129°00"	778.00'	20.14'	S06°58'19"E	20.14'
C19	0°06'51"	2510.00'	5.00'	S00°29'59"E	5.00'
C20	87°50'22"	10.00'	15.33'	S46°18'03"E	13.87'
C21	91°09'01"	10.00'	15.91'	S44°14'16"W	14.28'
C22	0°24'17"	2490.00'	17.59'	N03°12'12"W	17.59'
C23	0°12'00"	2518.00'	8.79'	N03°18'21"W	8.79'
C24	90°00'00"	10.00'	15.71'	N45°11'14"W	14.14'



**DETAIL
 TYPICAL STREET INTERSECTION
 "CLEAR VISION AREA"
 (per BMCC, Sec. 27-615)
 NOT TO SCALE**

TR. 4-B
 AM. CERT. 2735
 TR. 4-A
 AM. CERT. 2735

LOT 1
 - BLOCK 8 -