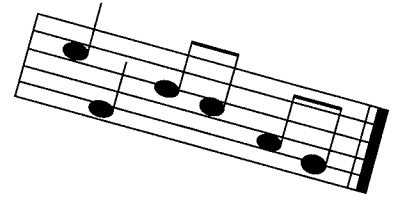


Big Sky Polka Club, Inc.

372 Montclair Drive
Billings, MT 59102
(406) 656-7470



RECEIVED

JUL 16 2010

City Administrator

Christina Volek
Billings City Administrator
September 3rd 4th & 5th 2010
Subject; RV Parking
Big Sky Polka Festival (PolkaFest)

Dear Christina,

Big Sky Polka Club of Billings requests, as in previous years, that visiting RV's have permission from the city, to park very short term during Big Sky Polka Clubs Polka festival event. The event takes place September 3rd-4th & 5th 2010 at the Shrine Auditorium. We are expecting 14-18 RV'S and they would be parking at the rear of the Shrine lot, saving valuable parking for our local and out of town guests traveling by car. Many of these RV guests are Club leaders and promoters of dance clubs around the country and Canada. They usually stay at the event site in private lots such as: The Shrine, Elks, Moose and Eagle Clubs. The RV'S will be departing on or before September 6th.

Tina, we are seeking approval from the City Council and the City Administrator in advance to these dates and will we need to pick up an official permit?

Thanks so much for your help and valuable time,

Sincerely,

L. Keith Kraft
Big Sky Polka Club, Pres.
Ph. 656-7470 or 255-2126