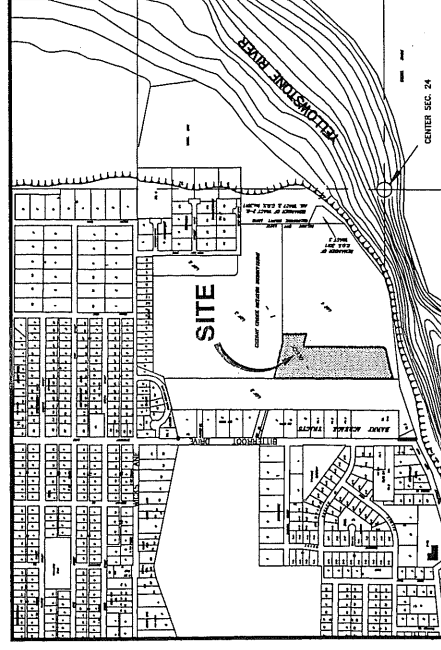
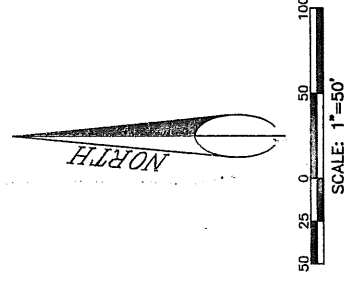
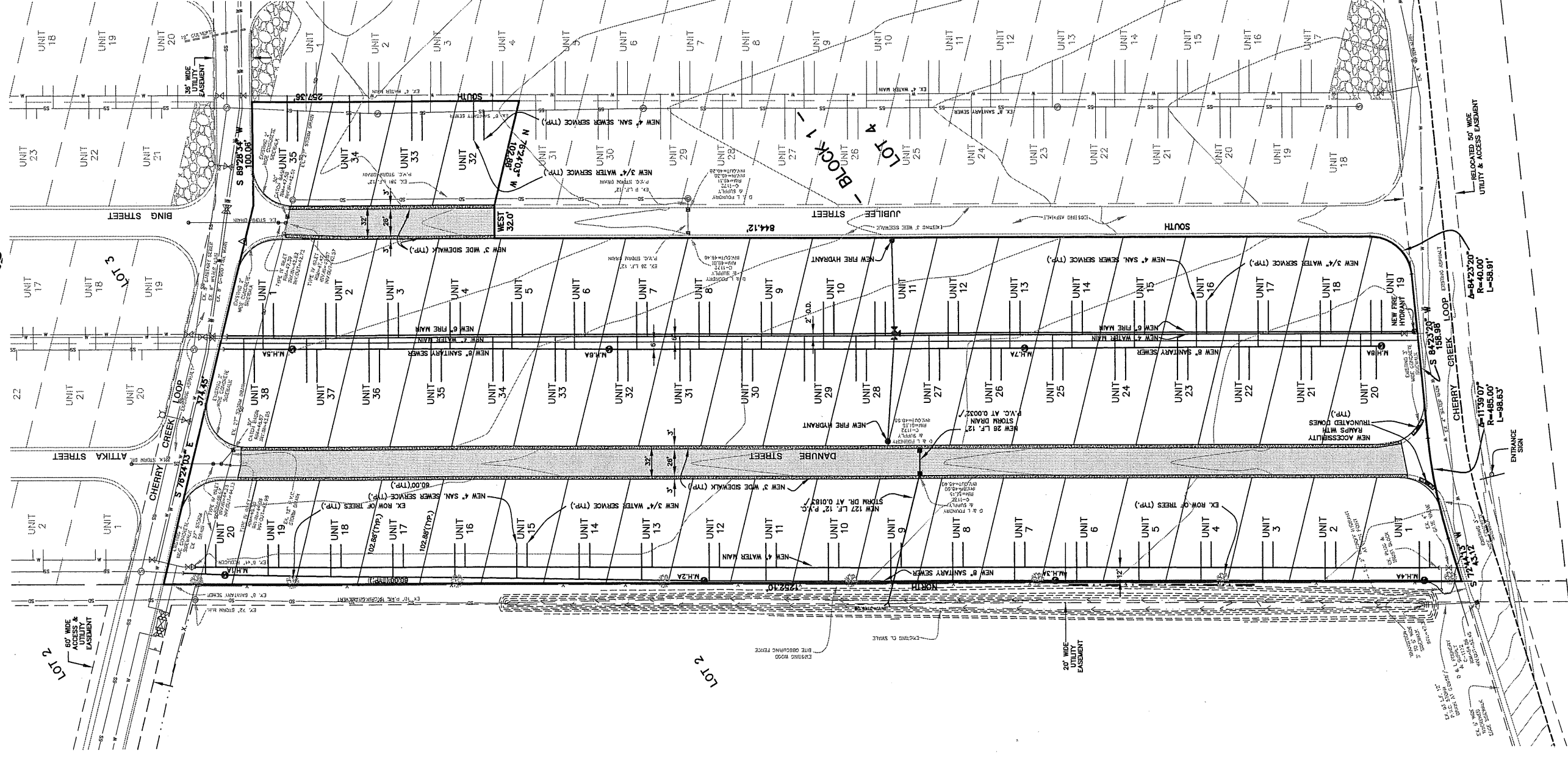


**EXHIBIT A**  
**DEVELOPMENT PLAN OF**  
**DANUBE COURT**

BEING A PORTION OF LOT 4, BLOCK 1 OF CHERRY CREEK ESTATES SUBDIVISION  
 BILLINGS, MONTANA

PREPARED FOR : CHERRY CREEK DEVELOPMENT, INC.  
 PREPARED BY : SANDERSON STEWART

JULY, 2010  
 BILLINGS, MONTANA



**VICINITY MAP**  
 NOT TO SCALE

**PLAN DATA**

GROSS AREA	= 9.72 ACRES
NET AREA	= 9.72 ACRES
NUMBER OF UNITS	= 62
PARKLAND REQUIREMENT	= 1.07 ACRES
PARKLAND DEDICATION	= CASH-IN-LEU
LINEAL FEET OF STREETS	= N/A
EXISTING ZONING	= RESIDENTIAL MANUFACTURED HOMES
SURROUNDING ZONING:	
NORTH	= RESIDENTIAL MANUFACTURED HOMES
SOUTH	= PUBLIC
EAST	= RESIDENTIAL MANUFACTURED HOMES
WEST	= R-9600
EXISTING LAND USE	= VACANT
PROPOSED LAND USE	= RESIDENTIAL MANUFACTURED HOMES