



PETITION
FOR-DE-ANNEXATION
FROM THE CITY OF BILLINGS

This is a Petition to the City of Billings requesting the De-annexation of property from the City, pursuant to MCA Title 7, Chapter 2, Part 48. Procedures for de-annexation are governed by the Statutes of the State of Montana. This petition contains the signatures of 100% of the Resident Freeholder Electors to be considered for de-annexation.

The Resident Freeholder(s) desire to de-annex Tract 2A of C of S 2544, 4th and 5th Amended. (See attachment # 1 & 2). The boundary of Tract 2A is highlighted in yellow. There are no streets, major trunk - water or sewer mains on this property.

Mc Masters Street is planned for future development from its current stoppage at the beginning of Tract 5A, in the future it would then cross Briarwood Golf Course, proceed northerly on Tract 2A where it would cross onto property owned by the Bowman family. Easements have been obtained for this road. (See attach #3, Briarwood Land Use Map). Easements are also filed for Southland Parkway and Culloden Road which would give another access point to Tract 5A.

The property is currently zoned "PUD", the property immediately adjacent to it is zoned "Agricultural Urban, R-15 & R-7". (atch 4)

The Briarwood Golf Course Board has been informed of this action, given a similar offer to purchase, and no response has been received by the sellers.

Additional Information in regards Property to be considered for De-Annexed from the City of Billings:

1. Legal Description. Section 27, Town 01 S, Range 26 E, S27 T01 S, R26 E, 2544 AMD, PARCEL 02A, TR 2A COS 2544 4TH & 5TH AMD (05) 121,78 ANNEXED (03) (Atch #5)
2. Tax Code. D11579. (Atch #5)
3. Address of General Location. North and West of Briarwood Golf Course, Fairways #10-15. (Atch #1)
4. Use of Property. Currently none.

5. Legal Property Owners:

Max Thornton (30.25%)
11842 Pryor Road
Billings, MT 59101

Katherine K. Thornton Trust (19.25%)
Max Thornton Co-Trustee w/
First Interstate Bank of Commerce
P.O. Box 30918
Billings, Mt 59116

PM&M LLC (50%)
Richard W. Paasch, Mgr
2060 Rimrock Road
Billings, Mt 59102

6. The below signed property owners respectfully request favorable action on the Petition for De-Annexation from the City of Billings:

Max Thornton

Max E. Thornton

Katherine Thornton Trust
Max Thornton, Co-Trustee

Max E. Thornton, Co-Trustee

First Interstate Bank of Commerce
Billings, Montana, Co Trustee

By: [Signature]
Trust Officer

By: Carina G. Gange, VP & WA
Trust Officer

Richard W. Paasch
PM&M LLC, Mgr

[Signature]

Attachments:

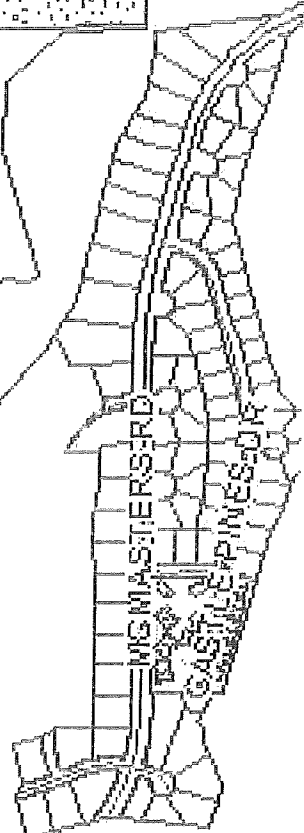
1. Limits of Annexation
2. C Of S #2544
3. Property Map Showing McMasters Ext, Southland Parkway & Culloden
4. Zoning Map
5. Yellowstone County Tax Stmt

R₁ Urban

Subtract
Tract
#2A

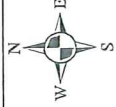
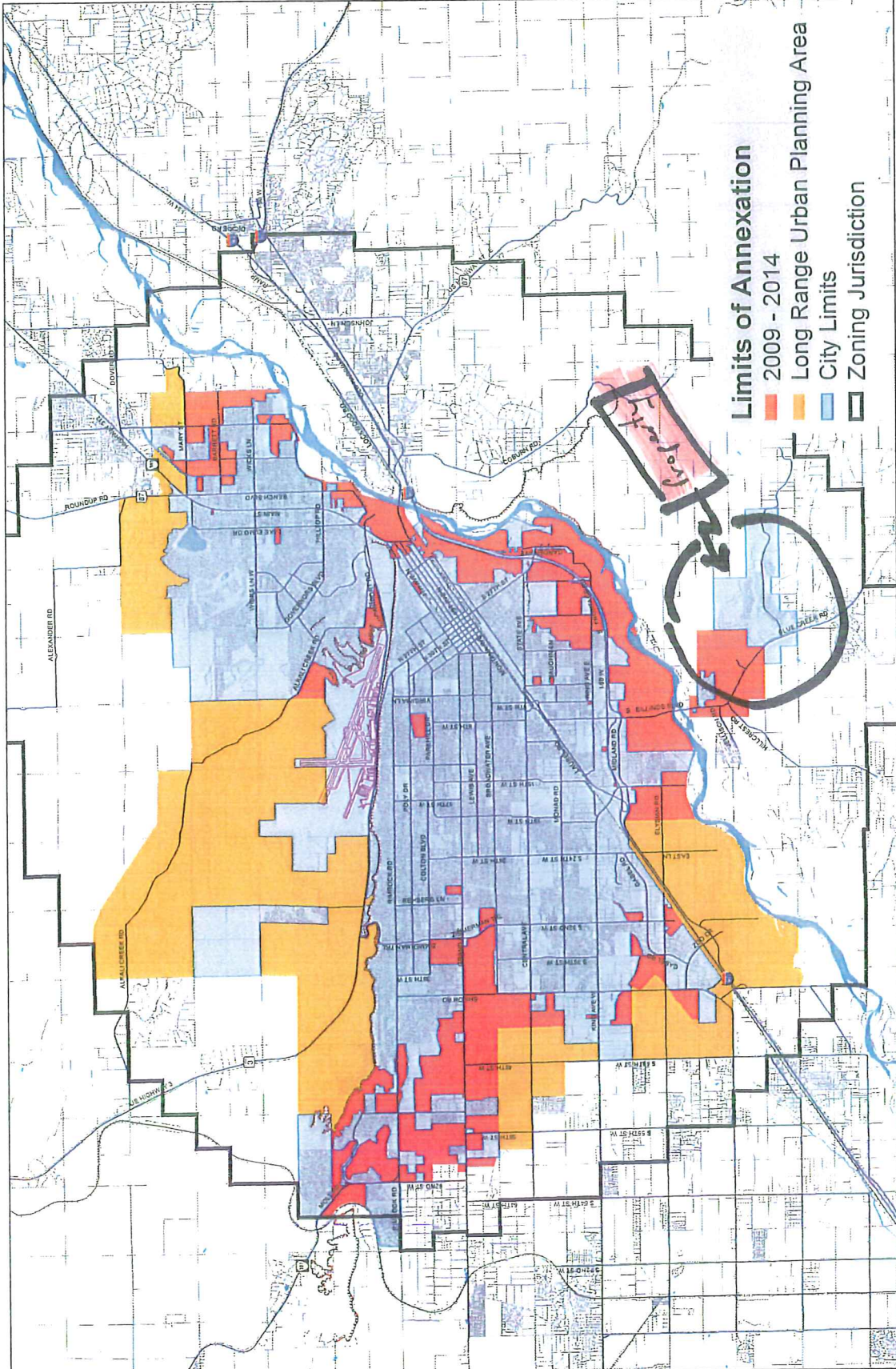


PUD



R-

R-



Map Document: GIS-Set/Projects/Annexation/Annexation_2009-2014.mxd
 12/20/09

Limits of Annexations

Revised June 8, 2009



- Subject Property
- Easement
- Blue Creek, Briarwood I
- F.H.C. Plans
- McHarris Easement

Southland Parkway

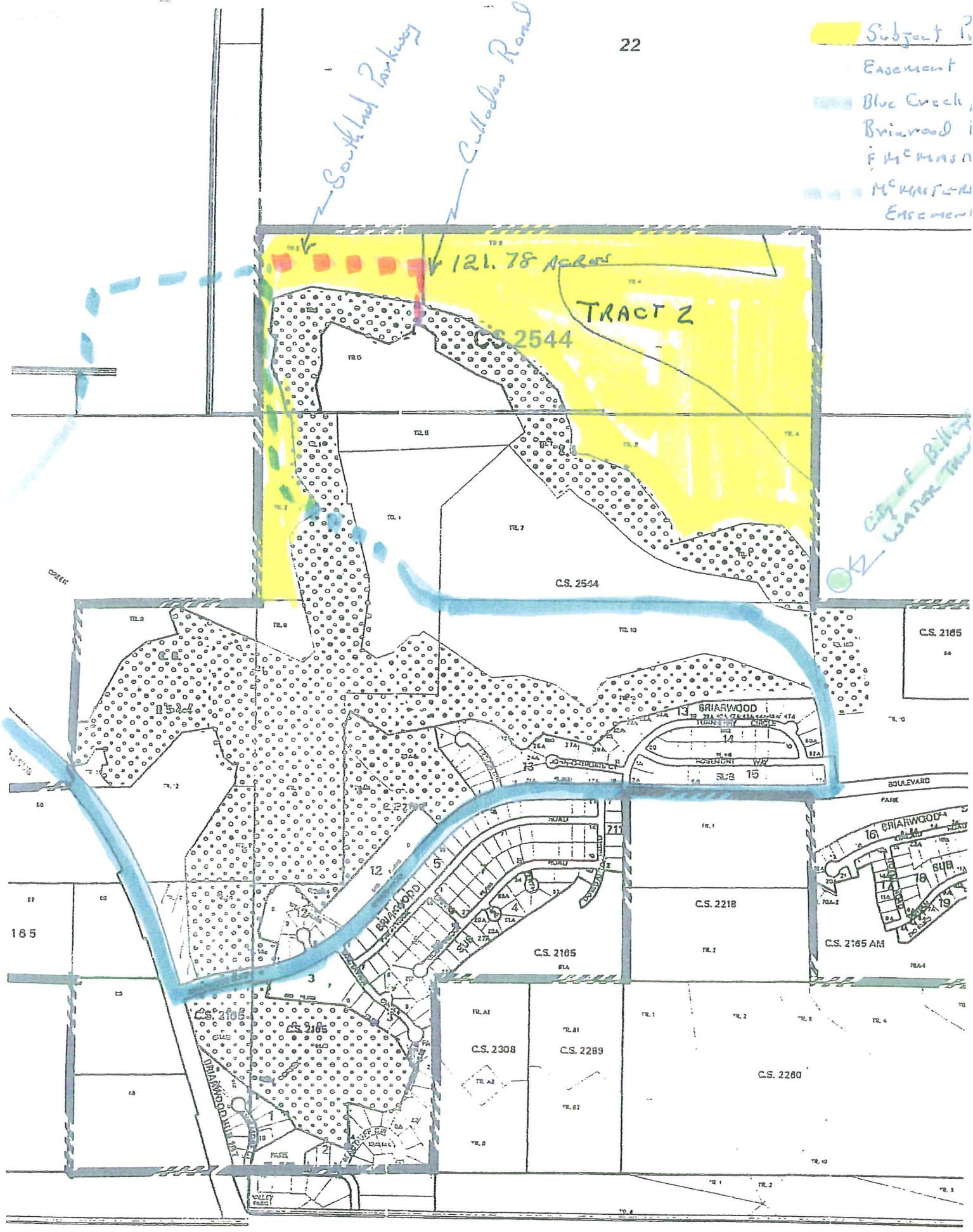
Calladans Road

121.78 Acres

TRACT 2

C.S. 2544

*City of Dallas
Water Dept*



C.S. 2185

BRIARWOOD I

UNDEVELOPED

RESIDENTIAL

SUB 15

12

13

14

15

16

17

18

19

20

21

22

23

24

25

26

27

28

29

30

BRIARWOOD II

UNDEVELOPED

RESIDENTIAL

SUB 15

12

13

14

15

16

17

18

19

20

C.S. 2308

C.S. 2289

C.S. 2280

C.S. 2218

C.S. 2185

C.S. 2165 AM

165

165

165

165

165

165

165

165

165

165

165

165

165

165

165

165

165

165

165

165

165

165

165

165

165

165

165

165

165

165

165

165

165

165

165

165

165

165

165

165

165

165

165

165

165

165

165

165

165

165

165

165

165

165

165

165

165

165

165

165

165

165

165

165

165

165

165

165

165

165

165

165

165

165

165

165

165

165

165

165

165

165

165

165

165

165

165

165

165

165

165

165

165

165

165

165

165

165

165

165

165

165

165

165

165

165

165

165

165

165

165

165

165

165

165

165

165

165

165

165

165

165

165

165

165

165

165

165

165

165

165

165

165

165

165

165

165

165

165

165

165

165

165

165

165

165

165

165

165

165

165

165

165

165

165

165

165

165

165

165

165

165

165

165

165

165

165

165

165

165

165

165

165

165

165

165

165

165

165

165

165

165

165

165

165

165

165

165

165

165

165

165

165

165

165

165

165

165

165

165

165

165

165

165

165

165

165

165

165

165

165

165

165

165

165

165

165

165

165

165

165

165

165

165

165

165

165

165

165

165

165

165

165

165

165

165

165

165

165

165

165

165

165

165

165

165