

AMENDED PLAT OF LOT 2A AND TRACT 4A OF THE AMENDED BLUE MEADOW ACREAGE TRACTS

LOCATED IN THE NE 1/4 OF SEC. 33, T. 1 N., R. 25 E. OF P.M.M., YELLOWSTONE COUNTY, MONTANA

SURVEY REQUESTED BY OWNERS TO
CREATE 4 LOTS FROM 2 EXISTING
TRACTS WITHIN A PLATTED SUBDIVISION.

OWNER OF LOT 2A & TRACT 4A : KINCAID LAND, LLC
DEED REF: TRACT 4A = DOC. NO. -----
LOT 2A = DOC. NO. -----

LEGEND

- (R) RECORD DISTANCE OR AZIMUTH
 - (M) MEASURED DISTANCE OR AZIMUTH
 - FOUND 5/8 INCH REBAR WITH 1 1/4 INCH PLASTIC CAP (#3704S) OR AS NOTED
 - SET 5/8 INCH REBAR WITH 1 1/4 INCH PLASTIC CAP MARKED (C&H ENGR. #9518ES)
- BASIS FOR AZIMUTHS FROM NORTH: THE EAST LINE OF BLUE MEADOW ACREAGE TRACTS BEING 180°43'00" [S00°43'00"W] BEARING COMPUTED FROM AZIMUTH SHOWN

TRACT 1-E
Third Amendment of
COS No. 674
4044 Rimrock Drive
Augusta L. Sorijo

TRACT 1-F
Third Amendment of
COS No. 674
4044 Rimrock Drive
Augusta L. Sorijo

LOT 6
4020 Rimrock Road
Amended Plat of Lot 1, Blue Meadow Acreage Tracts
John & Jonny Kirk, Trustees

LOT 5A
Amended Plat of Lots 2, 3, 4 & 5 of
Amended Lot 1, Blue Meadow Acreage Tracts
City of Billings

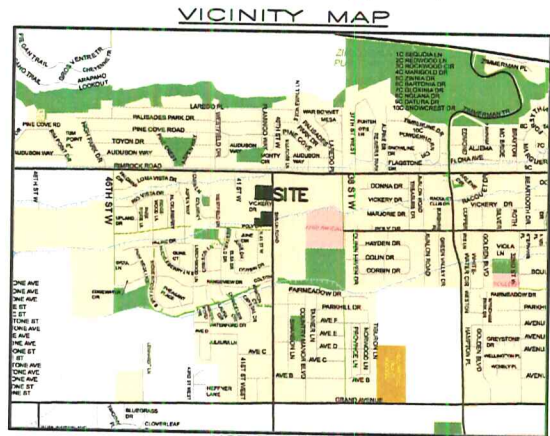
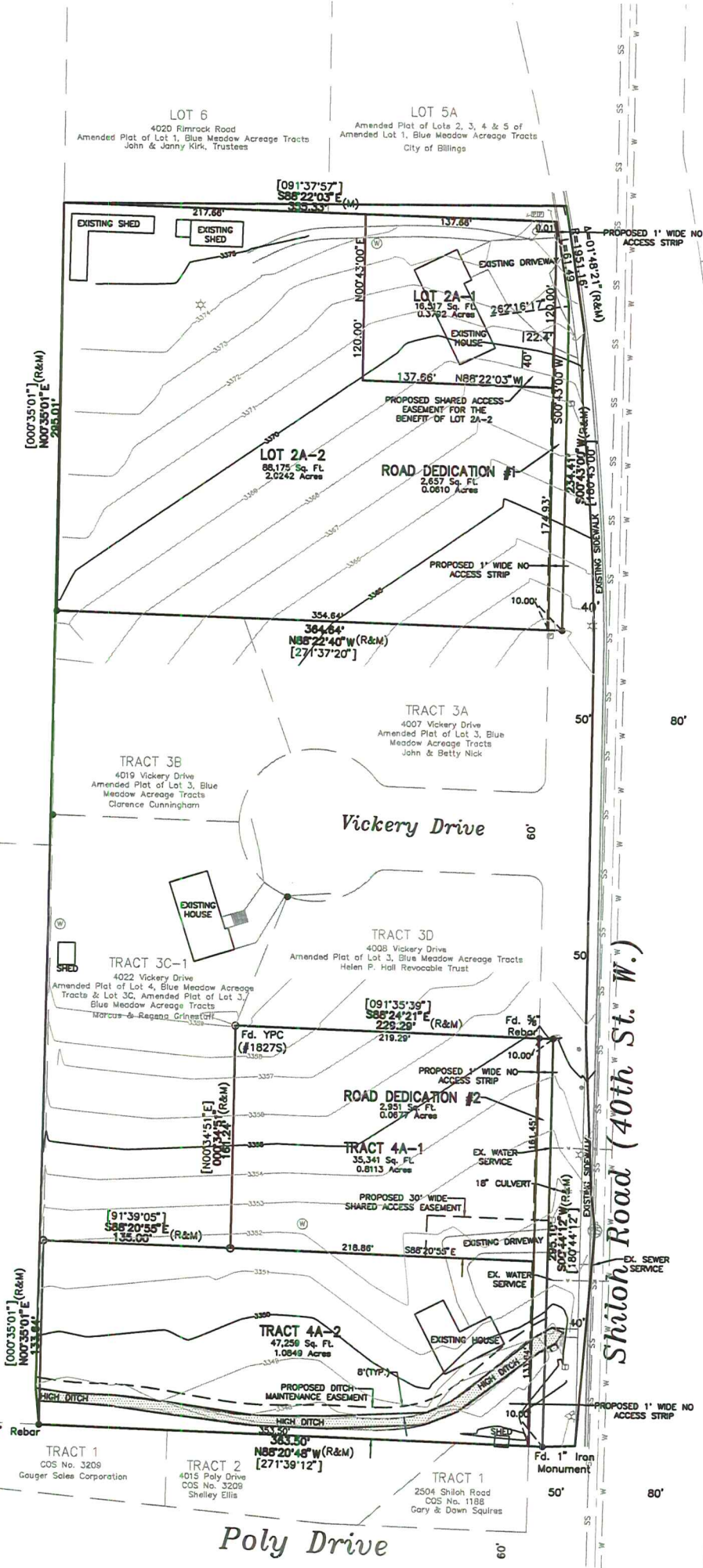
TRACT A-4
COS No. 369 FIFTH AMENDED
3940 Rimrock Drive
Lutheran Retirement Home, Inc.

TRACT A-1-A
COS No. 369 FIFTH AMENDED
Lutheran Retirement Home, Inc.

TRACT A-2-A
COS No. 369 FIFTH AMENDED
Lutheran Retirement Home, Inc.

TRACT A-4
COS No. 369 FIFTH AMENDED
Lutheran Retirement Home, Inc.

LOT 1A
MISSIONS UNITED SUBDIVISION
2429 Shiloh Road
St. Johns Lutheran Ministries



SITE DATA

NUMBER OF LOTS:	4
MAXIMUM LOT AREA:	2.0242 ACRES
MINIMUM LOT AREA:	0.3792 ACRES
AREA OF PARKLAND:	NONE
LINEAR FEET OF STREET:	NO NEW STREETS
NET ACREAGE:	4.2993 ACRES
GROSS ACREAGE:	4.4281 ACRES
EXISTING ZONING:	R9600
PROPOSED ZONING:	R9600
EXISTING LAND USE:	SINGLE FAMILY RESIDENTIAL(2 HOMES)
PROPOSED LAND USE:	SINGLE FAMILY RESIDENTIAL(4 HOMES)

Scale In Feet
0 50
15 0 15
Scale In Meters

Engineering and Surveying Inc.
1031 Stoneridge Drive • Bozeman, MT 59718
Phone (406) 587-1115 • Fax (406) 587-0769
www.chengines.com • info@chengineers.com