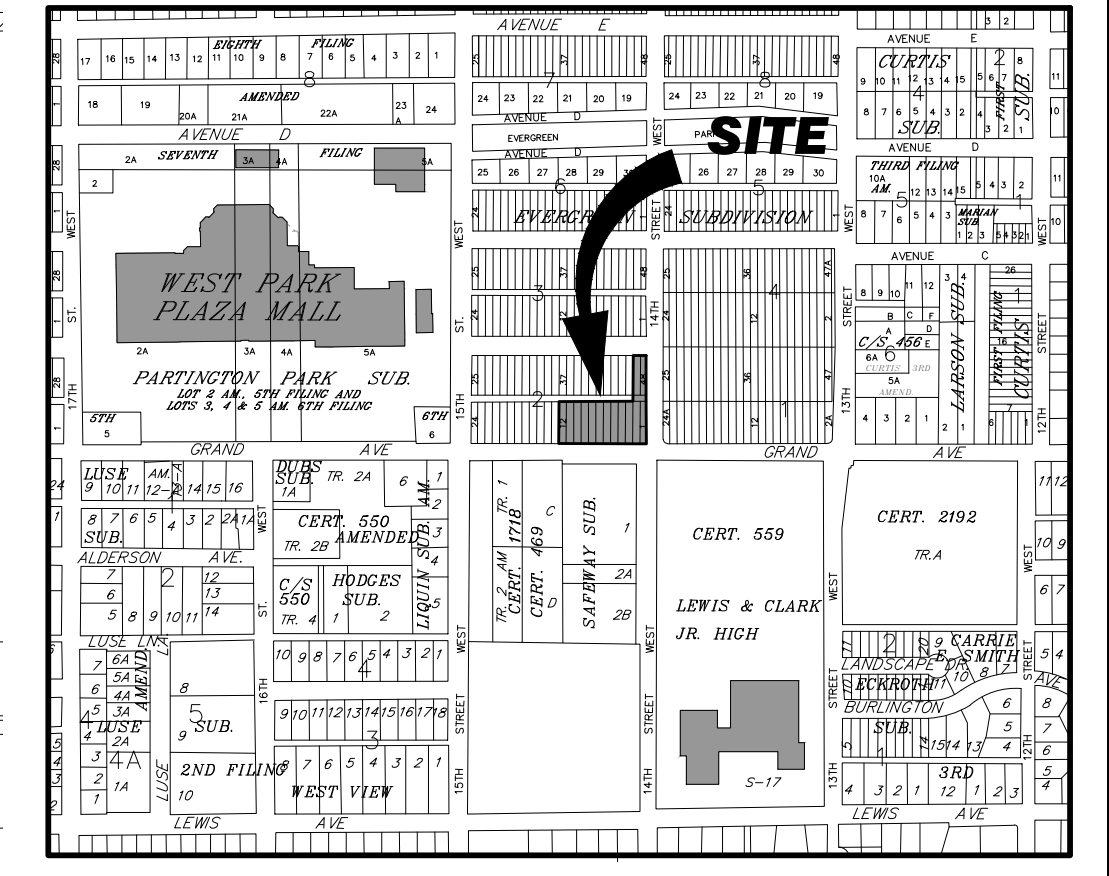


SITE DATA

ZONING: COMMUNITY COMMERCIAL
FOR LOTS 1 - 12
R 6000 FOR LOTS 47 & 48
LOT AREA: ±48,257 Sq. Ft.
TOTAL BUILDING AREA: ±12,000 Sq. Ft.

	REQUIRED	PROVIDED (MIN.)
FRONT SETBACK	20 ft.	±64 ft.
REAR SETBACK	0 ft.	±7.5 ft.
SIDE SETBACK	10 ft.	±94 ft.
SIDE ADJ. TO STREET SETBACK	10 ft.	±94 ft.
ARTERIAL SETBACK	60 ft.	±98 ft.
LOT COVERAGE	50% (MAX.)	±25%
LANDSCAPING	3,625 S.F.	±14,055 S.F.
OFF STREET PARKING	40 STALLS	42 STALLS
MAX. BUILDING HEIGHT	45 FEET	±34 FEET



VICINITY MAP

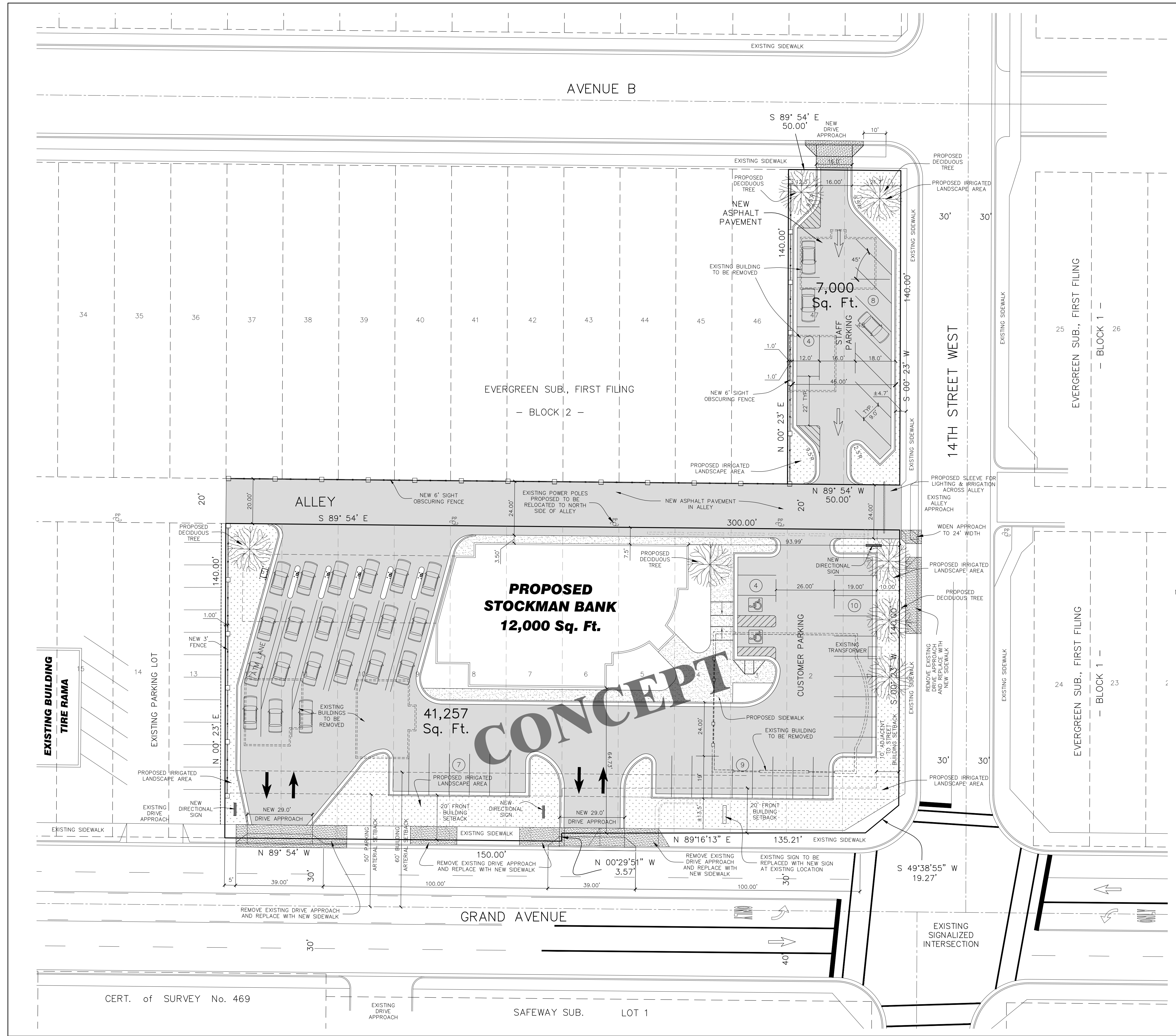
**PRELIMINARY
NOT FOR
CONSTRUCTION**

STOCKMAN BANK
LOTS 1 - 12, 47 AND 48, BLOCK 2,
EVERGREEN SUBDIVISION, FIRST FILING
BILLINGS, MONTANA
PROPOSED SITE PLAN

C.A.D.: LLK
DATE: 5/19/11
REVISIONS: 6/6/11

APPROVED BY:
QUALITY ASSURANCE:

SCALE: 1" = 20'
FILE: STOCKMAN-GRAND-AVE-A1-7A
PROJECT NO.: 78015.13
SHEET 1 OF 1



CERT. of SURVEY No. 469

SAFeway SUB. LOT 1

P:\P\10_14\2010\78015.13_Stockman_Bank_P\PROJ\CD\BASE\ENR\STOCKMAN_BANK_BASE-A1-7A.dwg DATE: 6/6/11 11:30 AM
 P:\P\10_14\2010\78015.13_Stockman_Bank_P\PROJ\CD\BASE\ENR\STOCKMAN_BANK_BASE-A1-7A.dwg DATE: 6/6/11 11:30 AM
 P:\P\10_14\2010\78015.13_Stockman_Bank_P\PROJ\CD\BASE\ENR\STOCKMAN_BANK_BASE-A1-7A.dwg DATE: 6/6/11 11:30 AM