

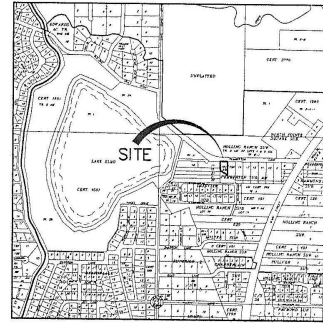
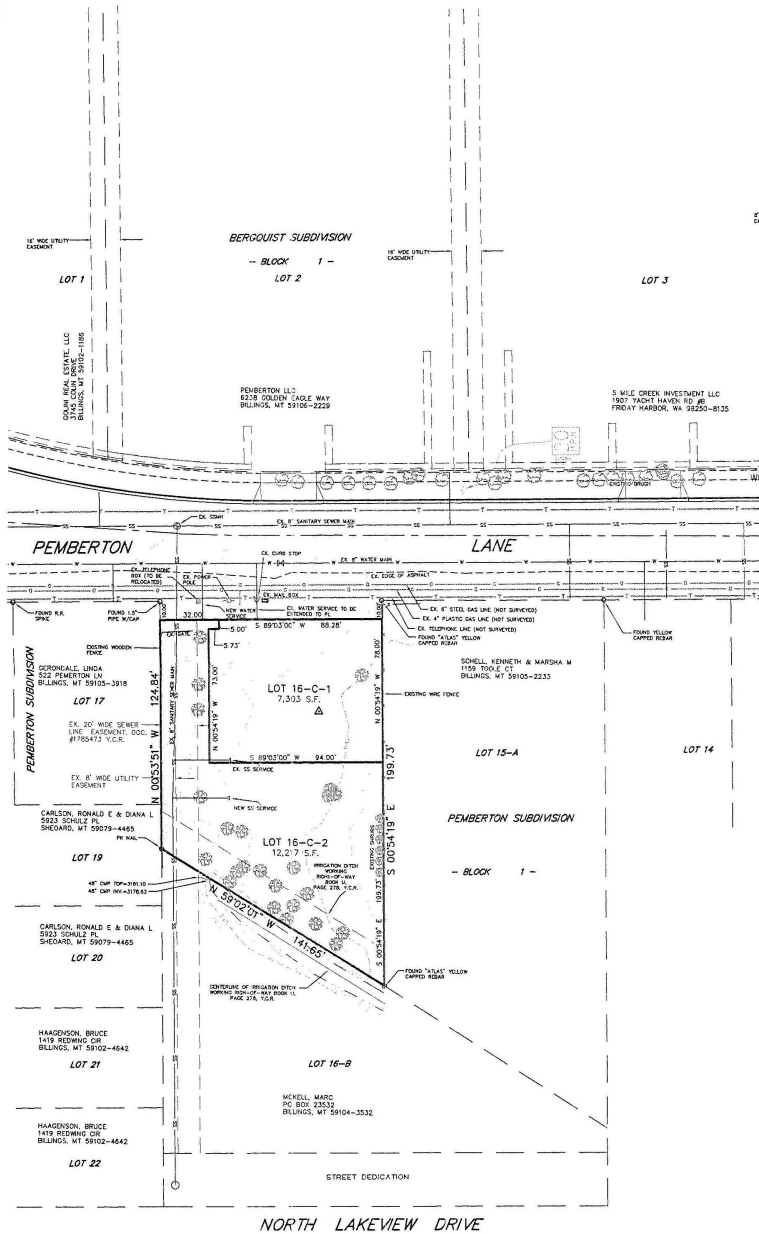
PRELIMINARY PLAT OF LOT 16C, BLOCK 1, PEMBERTON SUBDIVISION  
**SHELDON WOLF SUBDIVISION**  
 LOCATED IN THE N1/2 NE1/4 SECTION 15, T.1N., R.26E., P.M.M.  
 IN THE CITY OF BILLINGS, YELLOWSTONE COUNTY, MONTANA

PREPARED FOR : SHELDON WOLF

JUNE, 2011

PREPARED BY : SANDERSON STEWART 

BILLINGS, MONTANA



VICINITY MAP  
 NOT TO SCALE

BASIS OF BEARING:

- FOUND SURVEY MONUMENT, AS NOTED
  - SET 5/8" X 18" REBAR WITH CAP MARKED WITH THE LICENSE NUMBER OF THE UNDERSIGNED LAND SURVEYOR AND "SANDERSON STEWART"
- SET INTERSECTION MONUMENT, 5/8"x18" REBAR WITH CAP MARKED WITH THE LICENSE NUMBER OF THE UNDERSIGNED LAND SURVEYOR AND "SANDERSON STEWART". WILL BE REPLACED WITH BRASS CAP MONUMENT BOX UPON COMPLETION OF STREET IMPROVEMENTS.

PLAT DATA

GROSS AREA	=	0.448 ACRES
NET AREA	=	0.448 ACRES
NUMBER OF LOTS	=	2
MINIMUM LOT SIZE	=	7,303 SF
MAXIMUM LOT SIZE	=	12,277 SF
LINEAL FEET OF STREETS	=	0
PARKLAND REQUIREMENT	=	N/A
PARKLAND DEDICATION	=	N/A
EXISTING ZONING	=	RESIDENTIAL-6000
SURROUNDING ZONING:		
NORTH	=	COMMUNITY COMMERCIAL
SOUTH	=	RESIDENTIAL-6000
EAST	=	RESIDENTIAL-6000
WEST	=	RESIDENTIAL - MAN. HOMES
EXISTING LAND USE	=	VACANT
PROPOSED LAND USE	=	RESIDENTIAL