

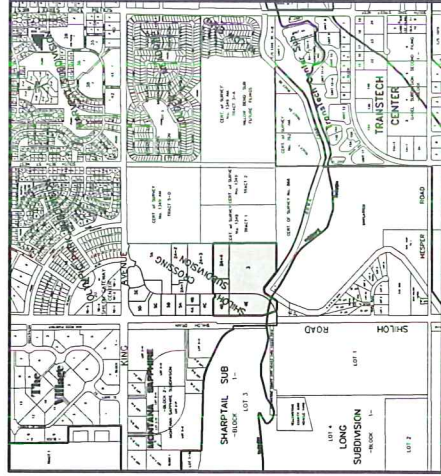
PRELIMINARY PLAT  
 AMENDING LOTS 2A-4-A, 2A-5-A, 3A, & 4E, BLOCK 1,  
**SHILOH CROSSING SUBDIVISION**  
 SITUATED IN THE NW1/4 OF SECTION 14, T. 1 S., R. 25 E., P.M.M.  
 BILLINGS, YELLOWSTONE COUNTY, MONTANA

PREPARED FOR: SHILOH CROSSING, LLC

PREPARED BY : SANDERSON STEWART

SCALE: 1" = 100'

SEPTEMBER, 2011  
 BILLINGS, MONTANA



**VICINITY MAP**

**PLAT DATA**

GROSS AREA	= 27.1309 AC.
NET AREA	= 27.1309 AC.
NUMBER OF LOTS	= 5
MINIMUM LOT SIZE	= 1.7243 AC.
MAXIMUM LOT SIZE	= 14.7335 AC.
LINEAL FEET OF STREETS	= N/A
PARKLAND REQUIREMENT	= N/A
EXISTING ZONING	= N/A
SURROUNDING ZONING:	= CONTROLLED INDUSTRIAL
	= CONTROLLED INDUSTRIAL
	= AG OPEN/CONTROLLED INDUSTRIAL
	= P.U.D./RESIDENTIAL MANUFACTURED HOME
	= ENTRYWAY LIGHT INDUSTRIAL
	= COMMERCIAL DEVELOPMENT
	= COMMERCIAL DEVELOPMENT

BASIS OF BEARING: PLAT OF SHILOH CROSSING SUBDIVISION.

- = FOUND REBAR AND CAP MARKED "ENGINEERING INC".
- = SET 5/8" X 18" REBAR AND CAP MARKED WITH THE LICENSE NUMBER OF THE UNDERSIGNED LAND SURVEYOR AND "SANDERSON STEWART"

