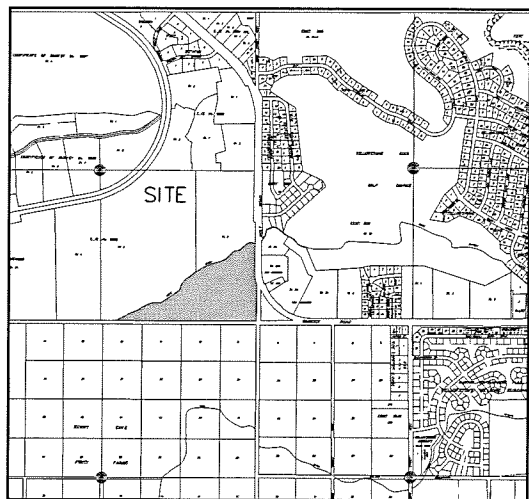


PRELIMINARY PLAT OF GOLDEN ACRES SUBDIVISION

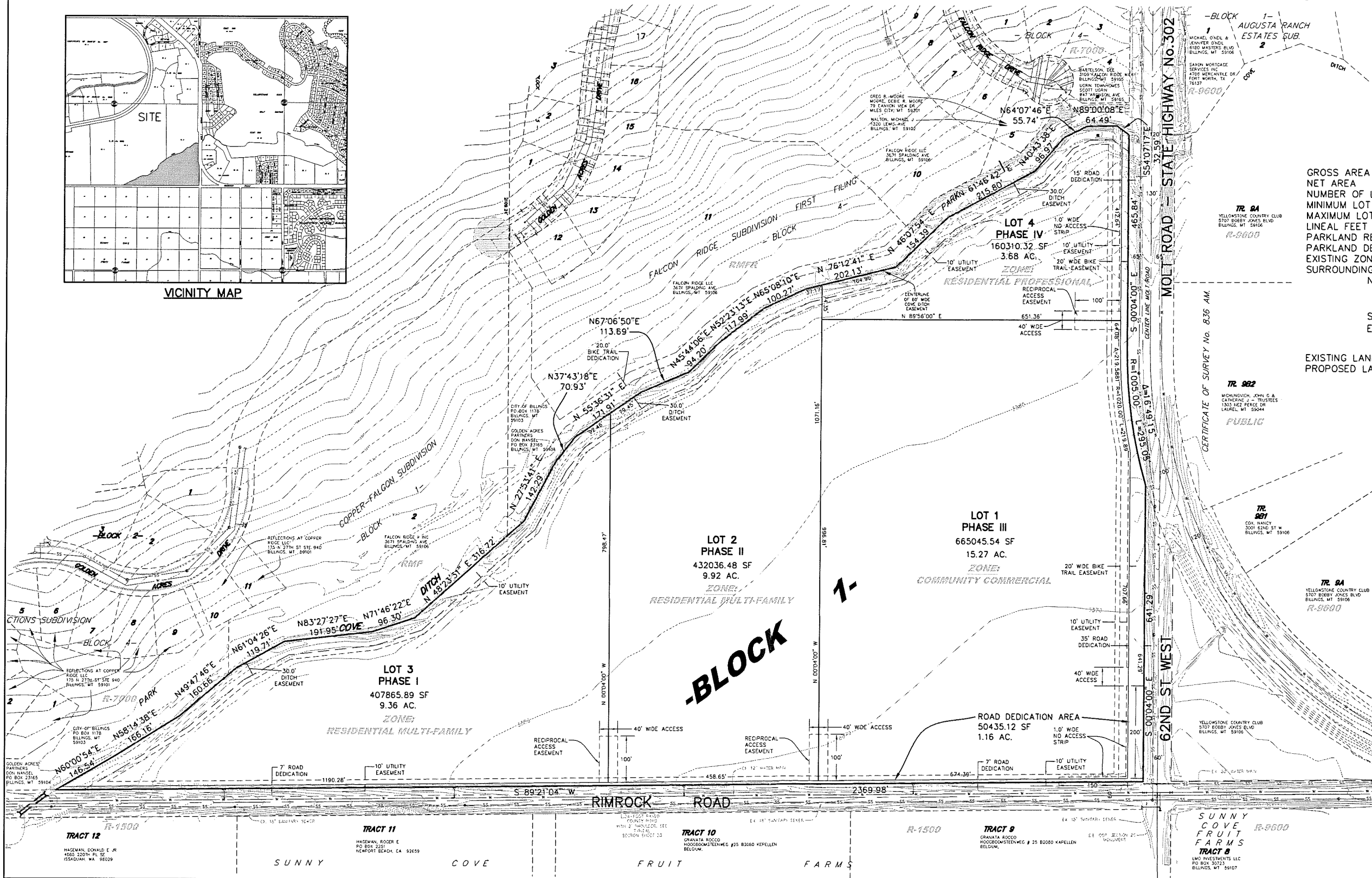
LOCATED IN TRACT 6A OF AMENDED TRACTS 5, 6, 7 & 8 OF CERTIFICATE OF SURVEY No.2465
SITUATED IN THE S.E. 1/4 OF SECTION 25, T. 1 N., R. 24 E., P.M.M.
YELLOWSTONE COUNTY, MONTANA

PREPARED FOR: GOLDEN ACRES PARTNERS
PREPARED BY: ENGINEERING, INC.
SCALE: 1"=100'

OCTOBER, 2008
BILLINGS, MONTANA



VICINITY MAP



PLAT DATA

GROSS AREA	=	39.40 AC.
NET AREA	=	38.24 AC.
NUMBER OF LOTS	=	4
MINIMUM LOT SIZE	=	3.68 AC.
MAXIMUM LOT SIZE	=	15.27 AC.
LINEAL FEET OF STREETS	=	0
PARKLAND REQUIREMENT	=	2.12 AC./OR CASH
PARKLAND DEDICATION	=	0
EXISTING ZONING	=	RP, CC, RMF
SURROUNDING ZONING:		
NORTH/WEST	=	R-9600, RMFR, RMF
SOUTH EAST	=	R-7000, R-15000
EXISTING LAND USE	=	AGRICULTURAL
PROPOSED LAND USE	=	MIXED USE