

FOXTAIL VILLAGE SUBDIVISION, SECOND FILING

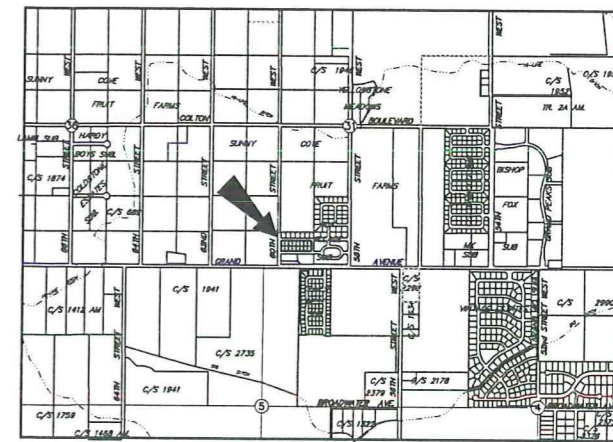
SITUATED IN THE SW1/4 OF SEC. 31, T. 1 N., R. 25 E., P.M.M.
YELLOWSTONE COUNTY, MONTANA

PREPARED FOR: CAL KUNKEL

MARCH, 2012

PREPARED BY : SANDERSON STEWART

BILLINGS, MONTANA

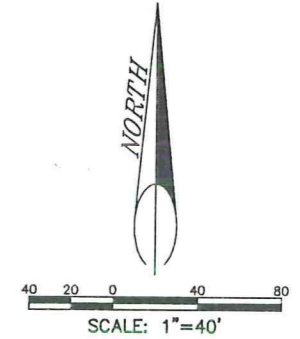
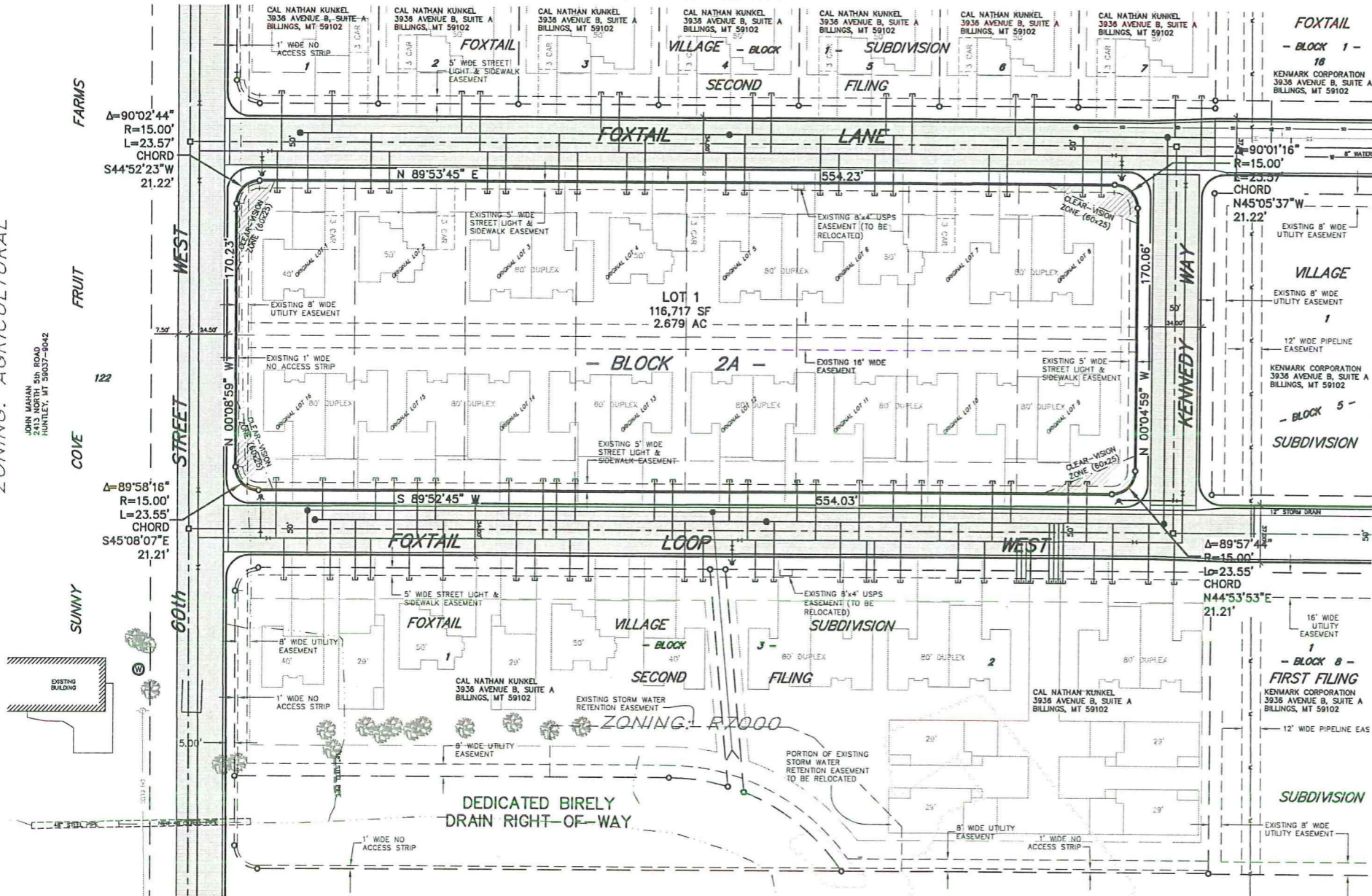


VICINITY MAP
NOT TO SCALE

ZONING: AGRICULTURAL

ZONING: R9600

ZONING: R7000



PLAT DATA

GROSS AREA	=	2.679 ACRES
NET AREA	=	2.679 ACRES
NUMBER OF LOTS	=	1
LINEAL FEET OF STREETS	=	NA
PARKLAND DEDICATION	=	PREVIOUSLY MET
EXISTING ZONING	=	AGRICULTURAL OPEN
SURROUNDING ZONING:		
NORTH	=	R9600
SOUTH	=	R7000
EAST	=	R7000
WEST	=	AGRICULTURAL OPEN
EXISTING LAND USE	=	AGRICULTURAL
PROPOSED LAND USE	=	RESIDENTIAL DEVELOPMENT