

Resubmittal

PRELIMINARY PLAT OF COPPER RIDGE SUBDIVISION, FOURTH FILING

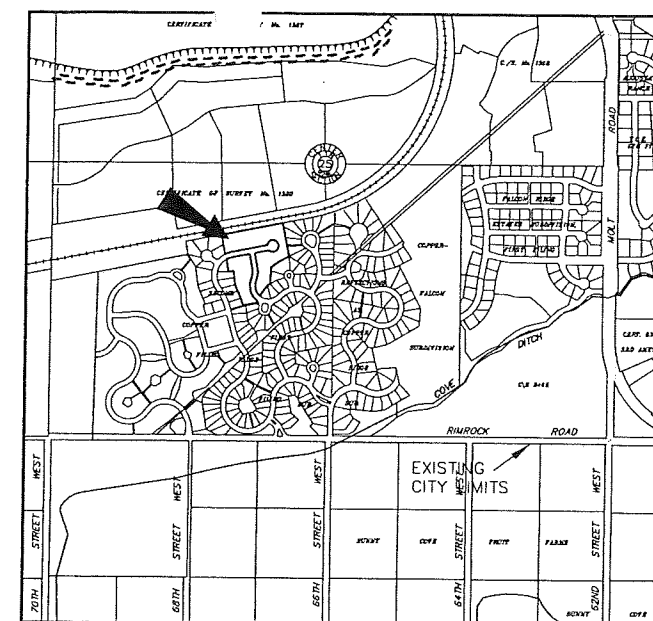
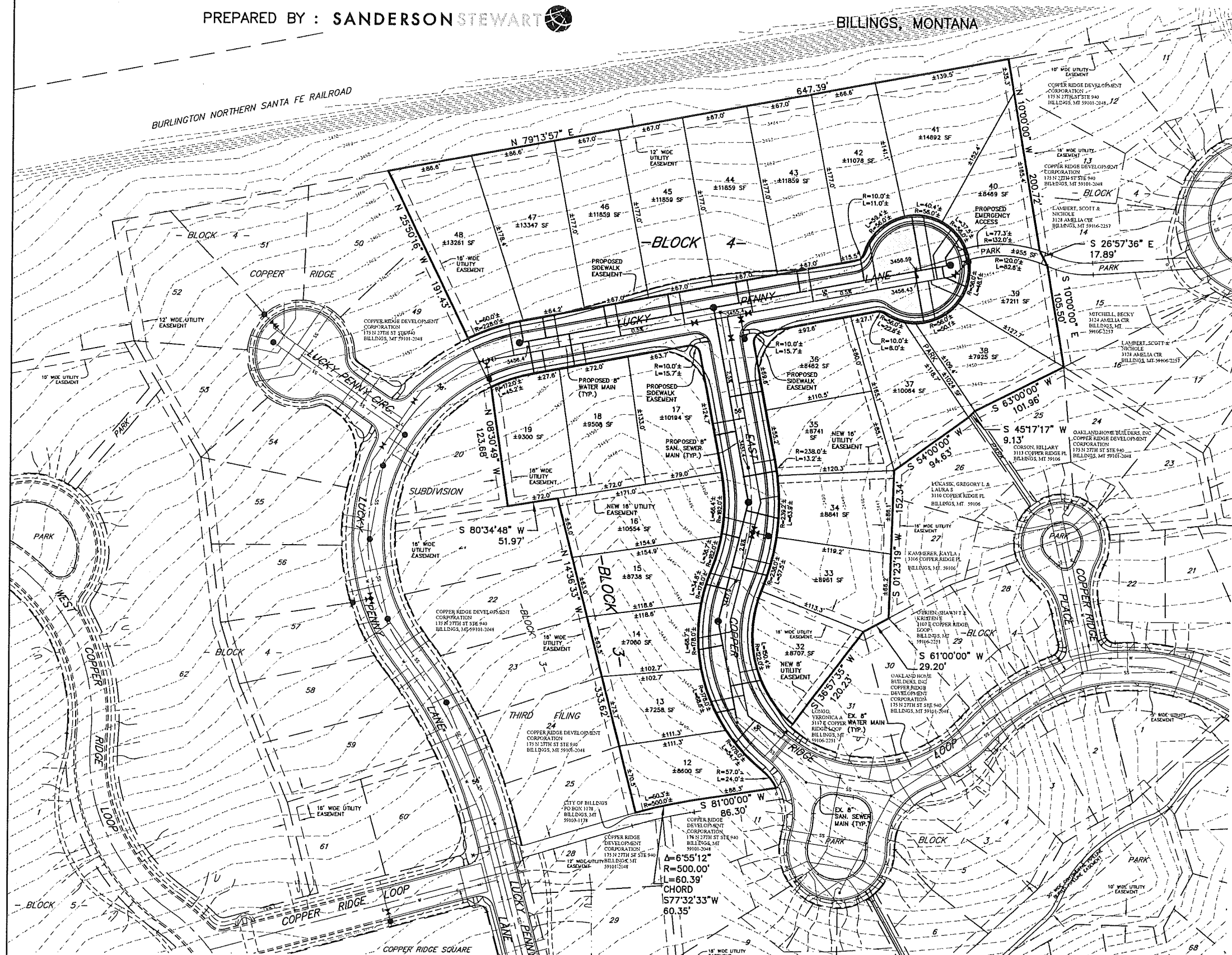
BEING LOT 19 OF BLOCK 3 AND LOTS 46, 47 & 48 OF BLOCK 4, COPPER RIDGE SUBDIVISION, THIRD FILING
SITUATED IN THE SW1/4 OF SECTION 25, T. 1 N., R. 24 E., P.M.M. IN THE CITY OF BILLINGS,
IN THE CITY OF BILLINGS, YELLOWSTONE COUNTY, MONTANA

PREPARED FOR : COPPER RIDGE DEVELOPMENT CORP.

FEBRUARY, 2012

PREPARED BY : SANDERSON STEWART

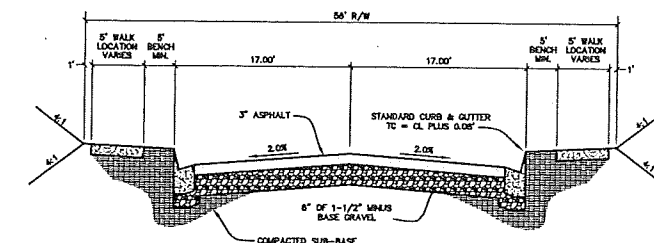
BILLINGS, MONTANA



VICINITY MAP
NOT TO SCALE



SCALE: 1"=50'



TYPICAL ROAD SECTION
NOT TO SCALE

PLAT DATA

GROSS AREA	= ±5.71 AC
NET AREA	= ±5.69 AC
NUMBER OF LOTS	= 25
MINIMUM LOT SIZE	= ±7,080 SF
MAXIMUM LOT SIZE	= ±14,892 SF
LINEAL FEET OF STREETS	= ±954
PARKLAND DEDICATION	= PREVIOUSLY MET
EXISTING ZONING	= R-7000R
SURROUNDING ZONING:	
NORTH	= OUTSIDE ZONING DISTRICT
SOUTH	= R-7000R
EAST	= R-7000R
WEST	= R-7000R
EXISTING LAND USE	= RESIDENTIAL
PROPOSED LAND USE	= RESIDENTIAL

P:\PROJ_MGMT\96012_128_Copper_Ridge_3rd&4th_Reflections_2nd&3rd_Plan\Copper_Ridge_3rd & 4th\CADD_030\BASE_DWG\COPPER RIDGE 4TH PP.DWG, 24.36 PLAT, 3/22/2012 9:10:55 AM, mbertram, 1:2:21875