



PRELIMINARY

Date: 3.13.12 Drawn By: SMZ

REVISION	Description	Date

BILLINGS, MT

# BILLINGS GYMNASTICS SCHOOL

**SCHUTZ FOSS ARCHITECTS, P.C.**  
 ARCHITECTURE · INTERIORS · PLANNING  
 BILLINGS, MT & GILLETTE, WY.  
 www.schutzfoss.com

3.0

Project No. 1108

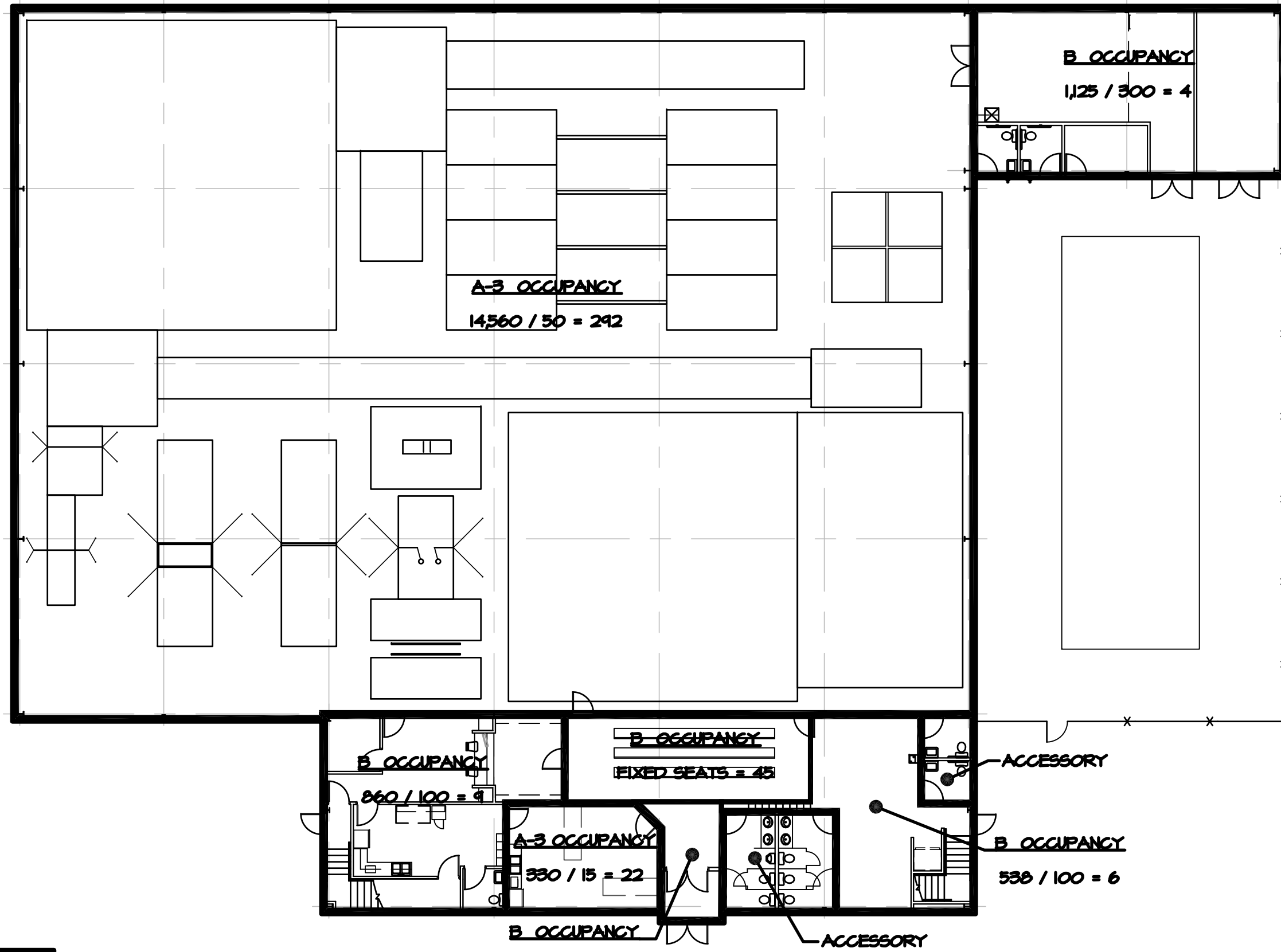
FIRE PROTECTION - 2009 I.B.C.  
 BILLINGS GYMNASTIC SCHOOL, BILLINGS

OCCUPANCY TYPE B / A-3 - 508.3 NON-SEPARATED USE  
 CONSTRUCTION TYPE IIB - BUILDING SPRINKLER THROUGHOUT I.B.C. 903.213

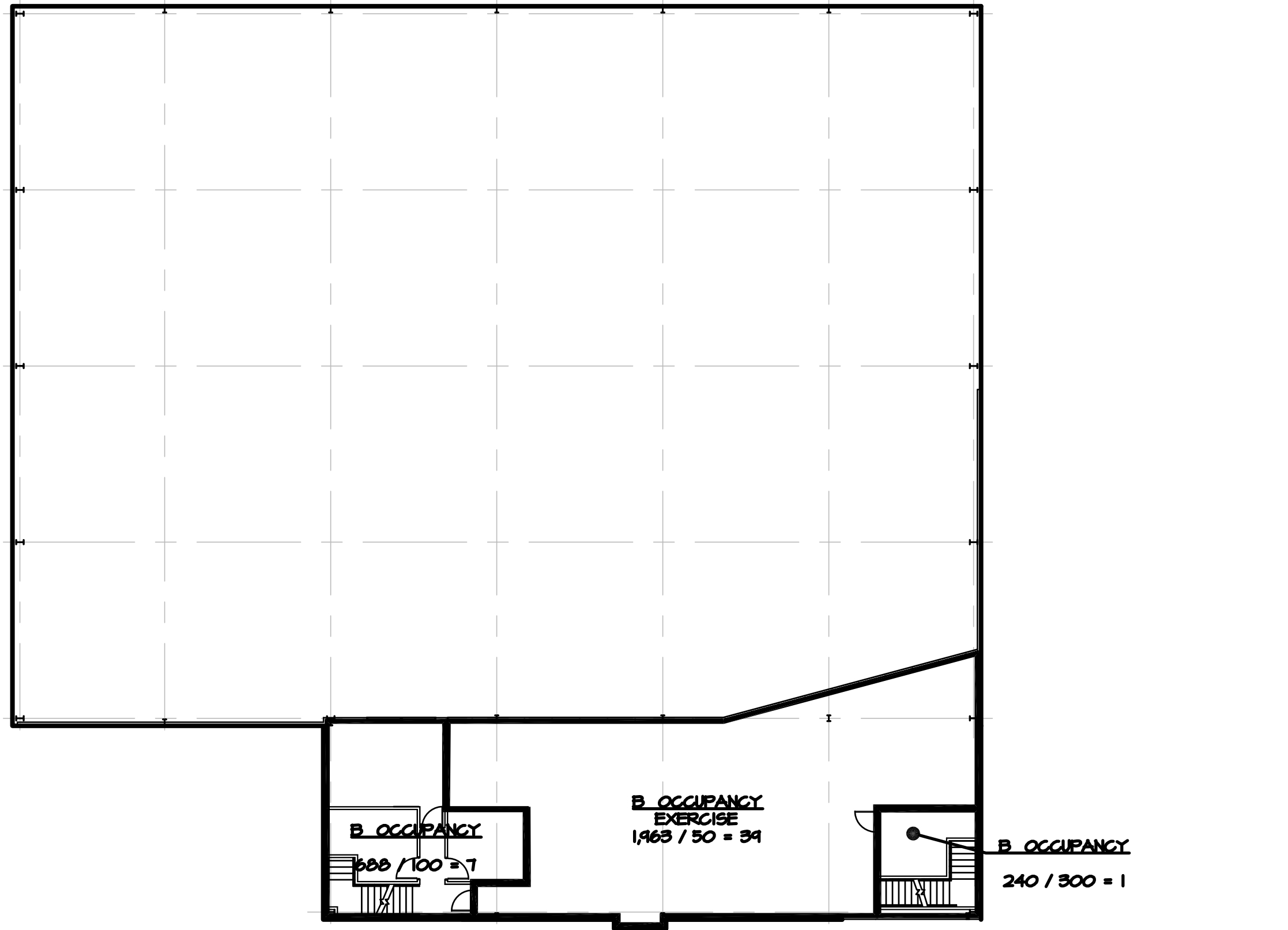
\* I.B.C. 506.2 FRONTAGE INCREASE:  
 $I_f = 100 \left[ \frac{283}{633} - .25 \right] \frac{30}{30} \quad I_f = 14\% \text{ FRONTAGE INCREASE}$

\* I.B.C. 506.1 AREA MODIFICATION:  
 $A_a = 4500 + [(4500)(0.14)] + [(4500)(3)]$   
 $A_a = 4500 + 1,805 + 28,500 = 34,805 \text{ S.F./FLOOR}$

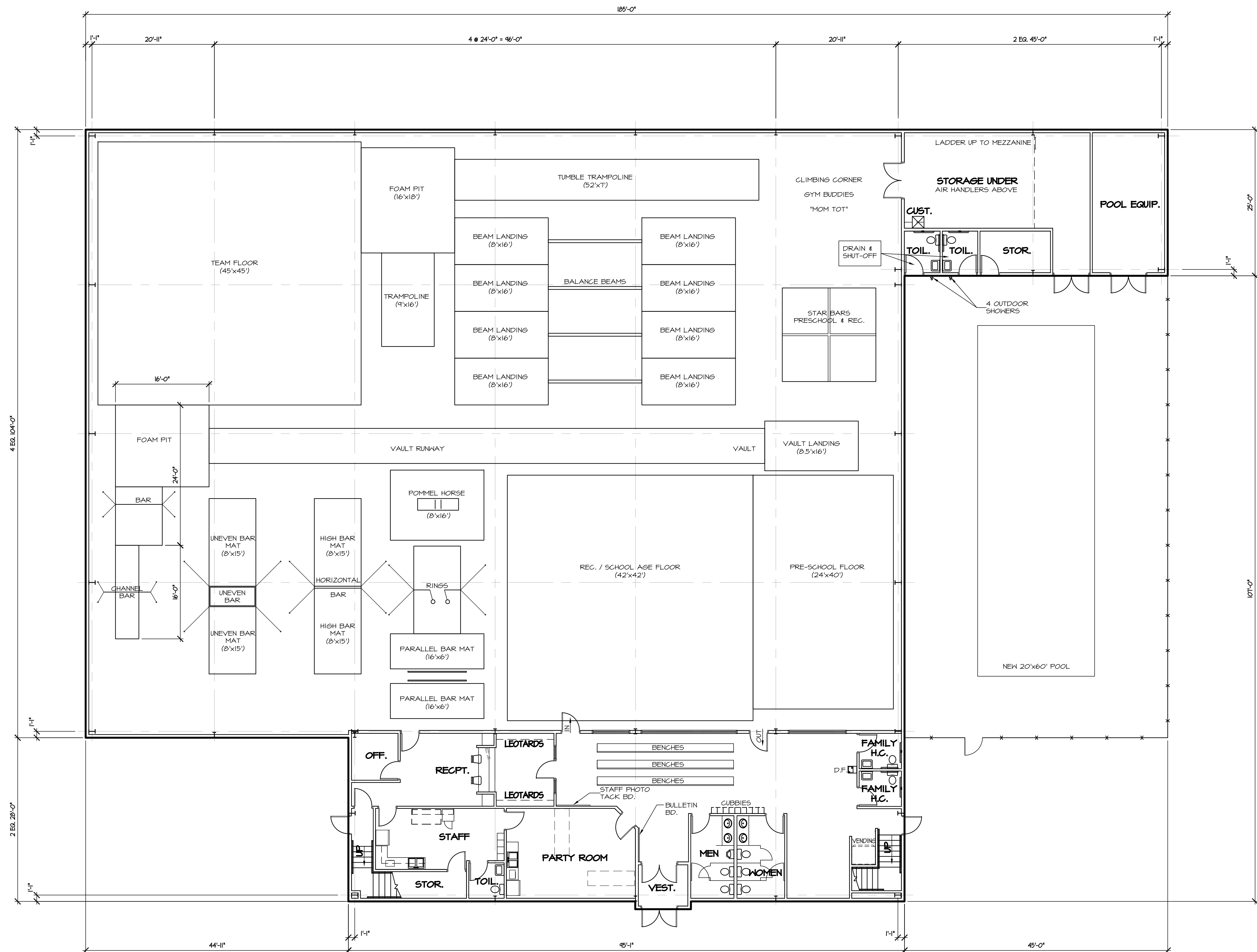
ACTUAL AREAS:  
 B OCCUPANCY 5,804 S.F. TOTAL  
 A-3 OCCUPANCY 14,551 S.F. TOTAL  
 TOTAL BUILDING 20,355 S.F. TOTAL



**MAIN FLOOR PLAN**  
 1/16" = 1'-0"



**SECOND FLOOR PLAN**  
 1/16" = 1'-0"



**MAIN FLOOR PLAN**  
 1/8" = 1'-0"

PRELIMINARY

Date:	3.13.12	Drawn By:	SM
Checked By:		Scale:	
Revision:		Description:	
1			

**BILLINGS GYMNASTICS SCHOOL**  
 BILLINGS, MT

# BILLINGS GYMNASTICS SCHOOL

**SCHUTZ FOSS ARCHITECTS, P.C.**  
 ARCHITECTURE-INTERIORS-PLANNING  
 BILLINGS, MT & GILLETTE, WY.  
 www.schutzfoss.com

FL201110263-1\_schm2.dwg, 3/13/2012 2:58:17 PM, Addbe PDF

PRELIMINARY

Date: 3.13.12 Drawn By: SMZ

Description	Rev.	Date

Copyright: All Plans, Information, Approvals, etc. are the property of Schutz Foss Architects, P.C.

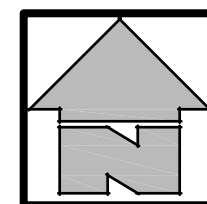
BILLINGS, MT

# BILLINGS GYMNASTICS SCHOOL

**SCHUTZ FOSS**  
**ARCHITECTS, P.C.**  
 ARCHITECTURE · INTERIORS · PLANNING  
 BILLINGS, MT, & GILLETTE, WY.  
 www.schutzfoss.com

## 3.2

Project No. 1108



### SECOND FLOOR PLAN

1/8" = 1'-0"