

# PRELIMINARY PLAT OF REFLECTIONS at COPPER RIDGE SUBDIVISION SECOND FILING

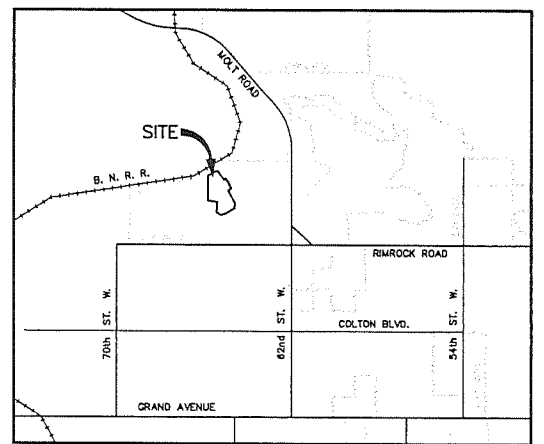
BEING LOTS 10 & 11 OF BLOCK 2 AND LOTS 12 & 13 OF BLOCK 3 IN  
REFLECTIONS AT COPPER RIDGE SUBDIVISION  
SITUATED IN THE SE1/4 OF SECTION 25, T. 1 N., R. 24 E., P.M.M.  
IN THE CITY OF BILLINGS, YELLOWSTONE COUNTY, MONTANA

PREPARED FOR : REFLECTIONS AT COPPER RIDGE, LLC

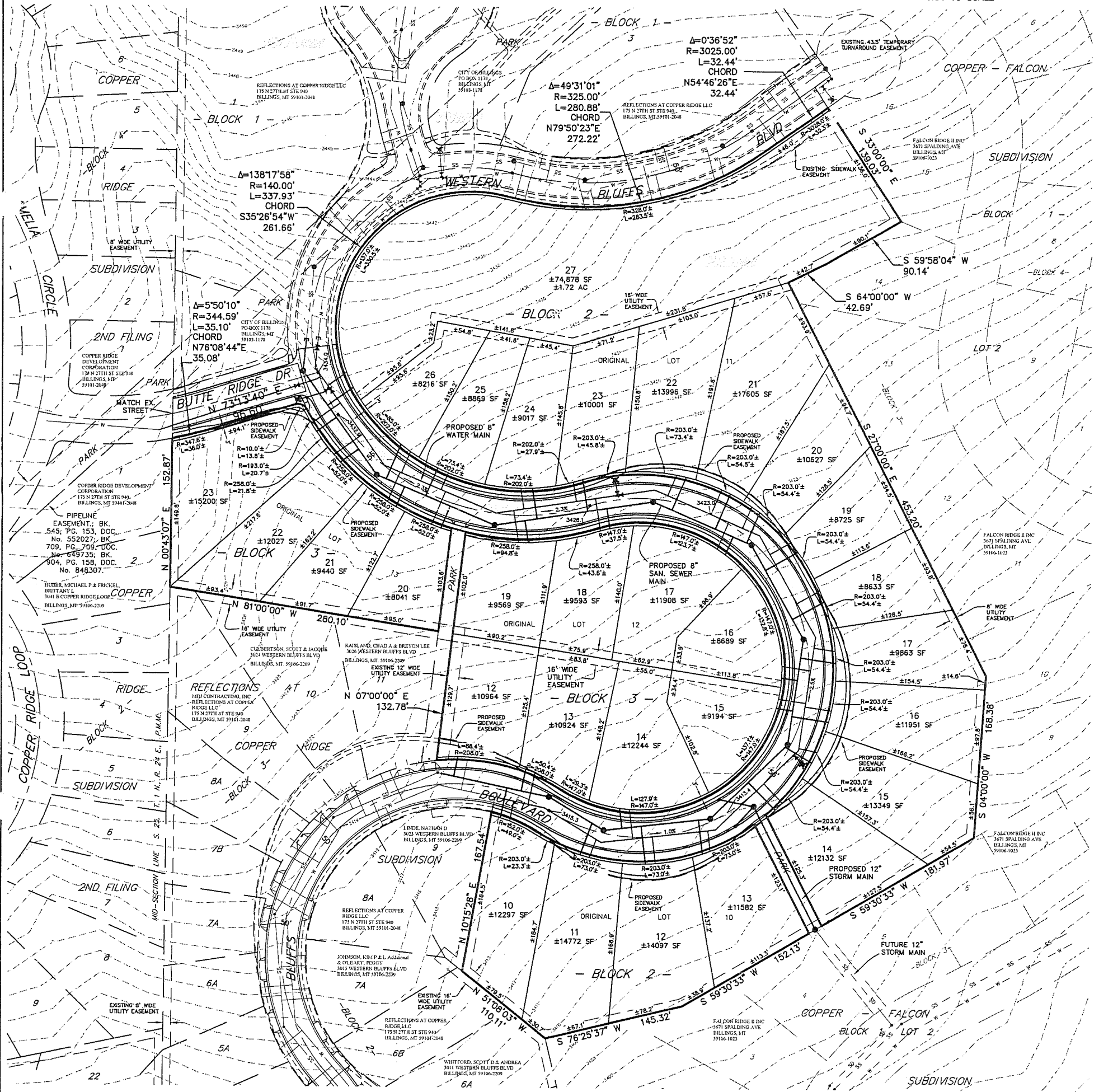
JANUARY, 2012

PREPARED BY : SANDERSON STEWART

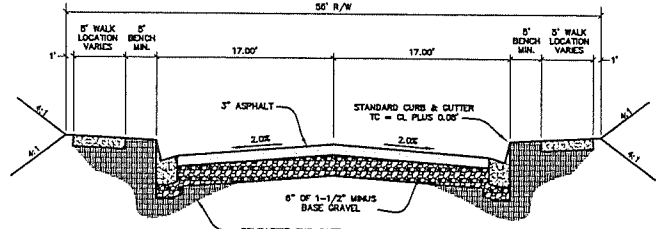
BILLINGS, MONTANA



VICINITY MAP  
NOT TO SCALE



SCALE: 1"=50'



TYPICAL ROAD SECTION  
NOT TO SCALE

**PLAT DATA**

GROSS AREA	=	9.343 AC
NET AREA	=	±9.138 AC
NUMBER OF LOTS	=	30
MINIMUM LOT SIZE	=	±8,041 SF
MAXIMUM LOT SIZE	=	±74,878 SF
LINEAL FEET OF STREETS	=	±1,359.6
PARKLAND REQUIREMENT	=	PREVIOUSLY MET
EXISTING ZONING	=	R-7000
SURROUNDING ZONING:		
NORTH	=	R-15000
SOUTH	=	R-7000
EAST	=	R-9600
WEST	=	R-7000R
EXISTING LAND USE	=	RESIDENTIAL
PROPOSED LAND USE	=	RESIDENTIAL