

PLAT OF JOSEPHINE CROSSING SUBDIVISION, SECOND FILING

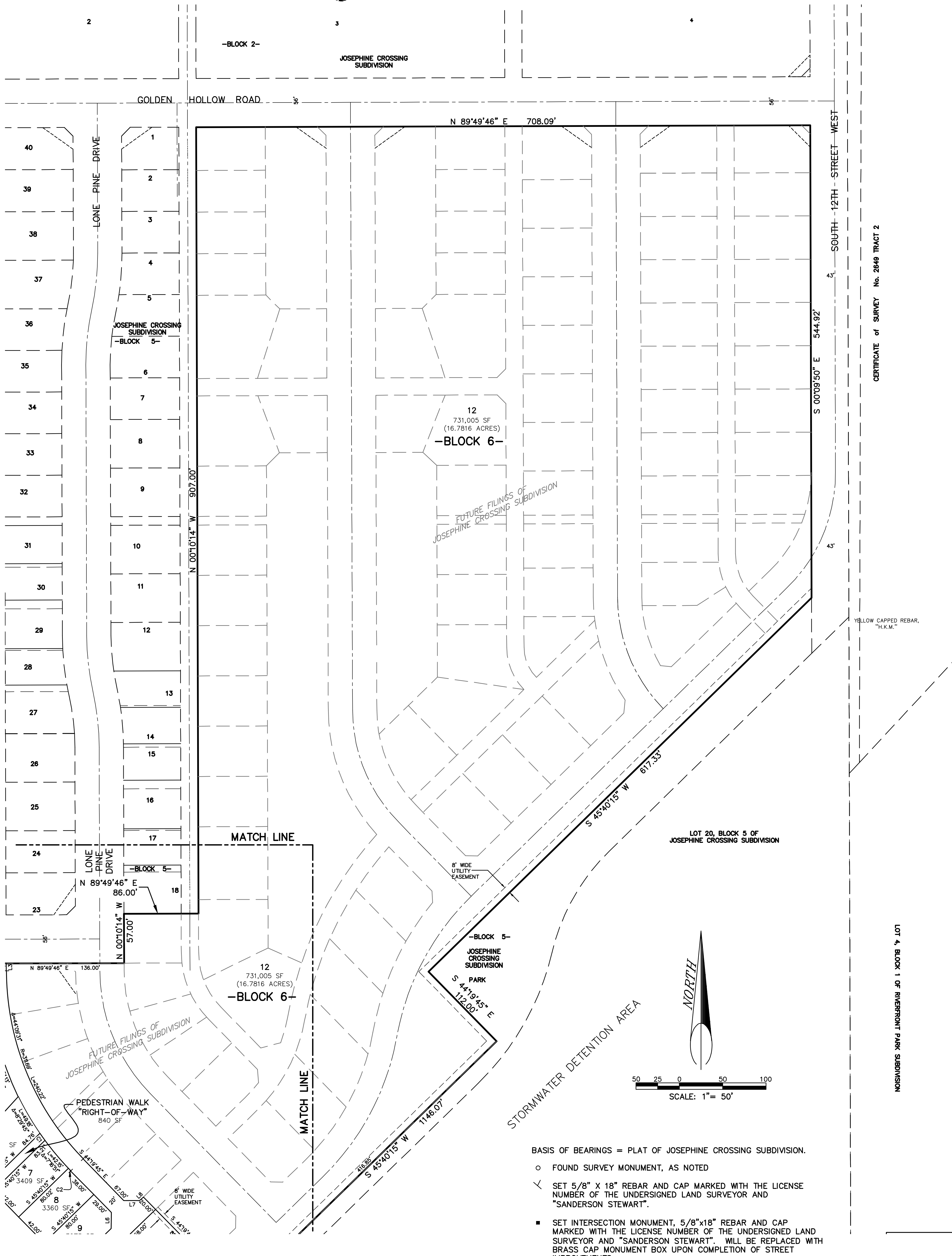
BEING LOT 19, BLOCK 5, JOSEPHINE CROSSING SUBDIVISION
SITUATED IN THE NW 1/4 OF SECTION 20, T.1S., R.26E., P.M.M.
CITY OF BILLINGS, YELLOWSTONE COUNTY, MONTANA

PREPARED FOR : McCALL DEVELOPMENT, INC.

OCTOBER 2011

PREPARED BY : SANDERSON STEWART

BILLINGS, MONTANA



CERTIFICATE OF SURVEY No. 2649 TRACT 2

LOT 4, BLOCK 1 OF RIVERFRONT PARK SUBDIVISION

- BASIS OF BEARINGS = PLAT OF JOSEPHINE CROSSING SUBDIVISION.
- FOUND SURVEY MONUMENT, AS NOTED
 - ∨ SET 5/8" X 18" REBAR AND CAP MARKED WITH THE LICENSE NUMBER OF THE UNDERSIGNED LAND SURVEYOR AND "SANDERSON STEWART".
 - SET INTERSECTION MONUMENT, 5/8"x18" REBAR AND CAP MARKED WITH THE LICENSE NUMBER OF THE UNDERSIGNED LAND SURVEYOR AND "SANDERSON STEWART". WILL BE REPLACED WITH BRASS CAP MONUMENT BOX UPON COMPLETION OF STREET IMPROVEMENTS.