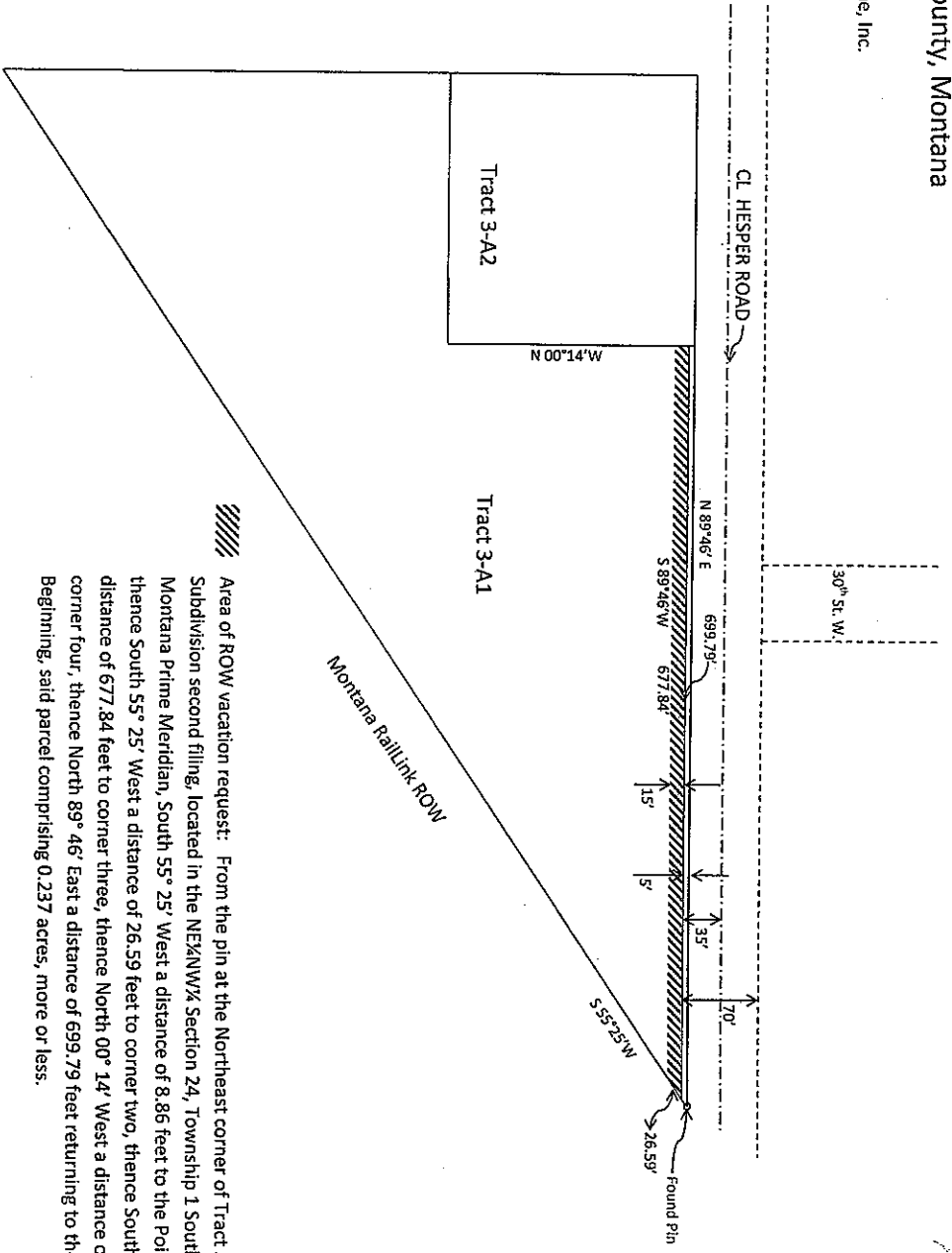


REQUEST TO VACATE PUBLIC RIGHT-OF-WAY
Tract 3-A1 Rockwood Subdivision – 2nd Filing
 Located in the NW¼, Section 24, T. 1 S., R. 25 E., P.M.M.
 Yellowstone County, Montana

Request by Bristlecone, Inc.



Area of ROW vacation request: From the pin at the Northeast corner of Tract 3-A1, Rockwood Subdivision second filing, located in the NE¼NW¼ Section 24, Township 1 South, Range 25 East, Montana Prime Meridian, South 55° 25' West a distance of 8.86 feet to the Point of Beginning, thence South 55° 25' West a distance of 26.59 feet to corner two, thence South 89° 46' West a distance of 677.84 feet to corner three, thence North 00° 14' West a distance of 15.0 feet to corner four, thence North 89° 46' East a distance of 699.79 feet returning to the Point of Beginning, said parcel comprising 0.237 acres, more or less.

Scale: 1 inch = 100 feet