

PRELIMINARY PLAT OF JOSEPHINE CROSSING SUBDIVISION, THIRD FILING

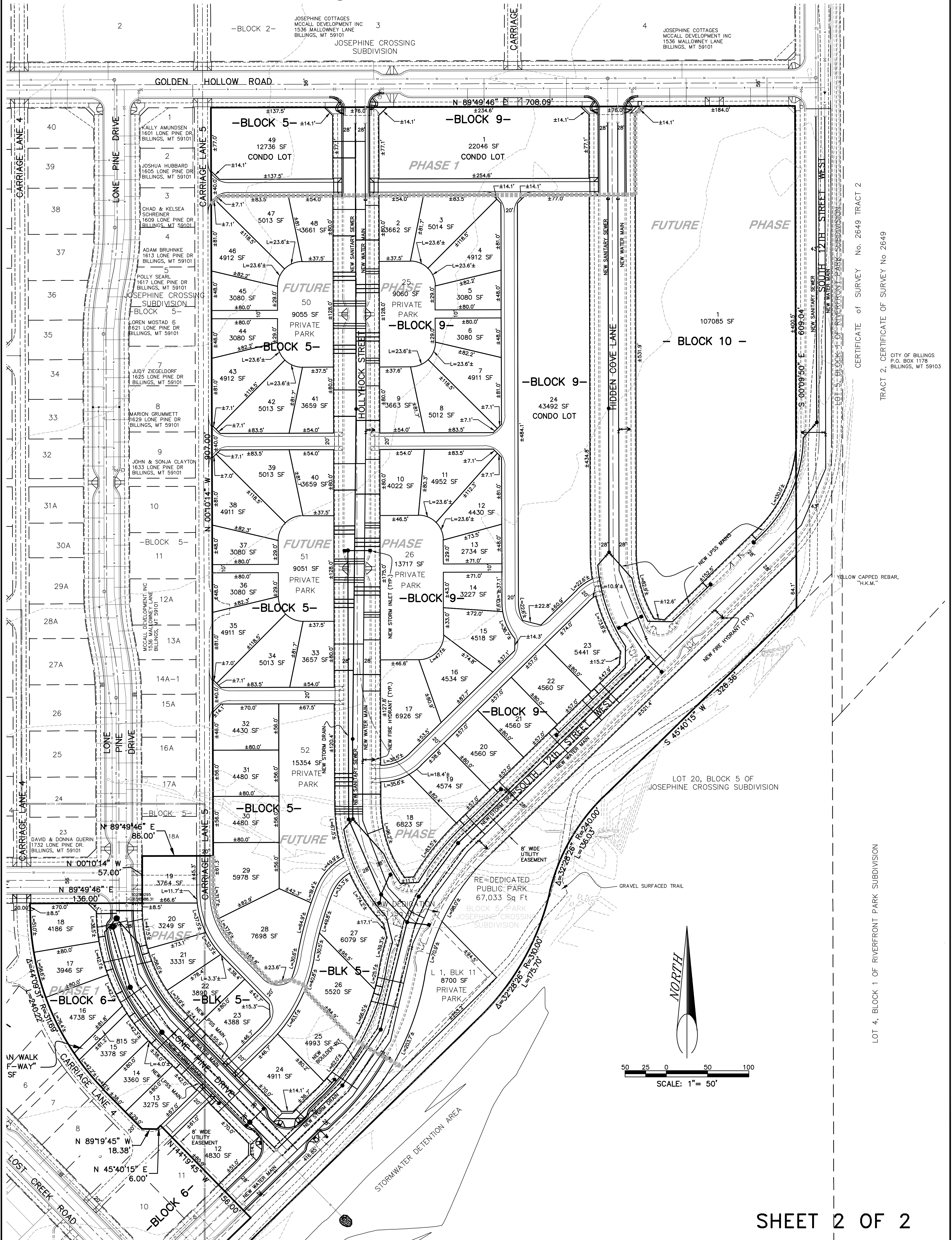
BEING LOT 12, BLOCK 6 AND LOT 18, BLOCK 8, JOSEPHINE CROSSING SUBDIVISION, SECOND FILING
AND BLOCK 5 PUBLIC PARK, JOSEPHINE CROSSING SUBDIVISION
SITUATED IN THE NW 1/4 OF SECTION 20, T.1S., R.26E., P.M.M.
CITY OF BILLINGS, YELLOWSTONE COUNTY, MONTANA

PREPARED FOR : McCALL DEVELOPMENT, INC.

PREPARED BY : SANDERSON STEWART

MAY 2012

BILLINGS, MONTANA



CERTIFICATE OF SURVEY No. 2649 TRACT 2
TRACT 2, CERTIFICATE OF SURVEY No 2649
CITY OF BILLINGS
P.O. BOX 1178
BILLINGS, MT 59103

YELLOW CAPPED REBAR, "H.K.M."

LOT 4, BLOCK 1 OF RIVERFRONT PARK SUBDIVISION

