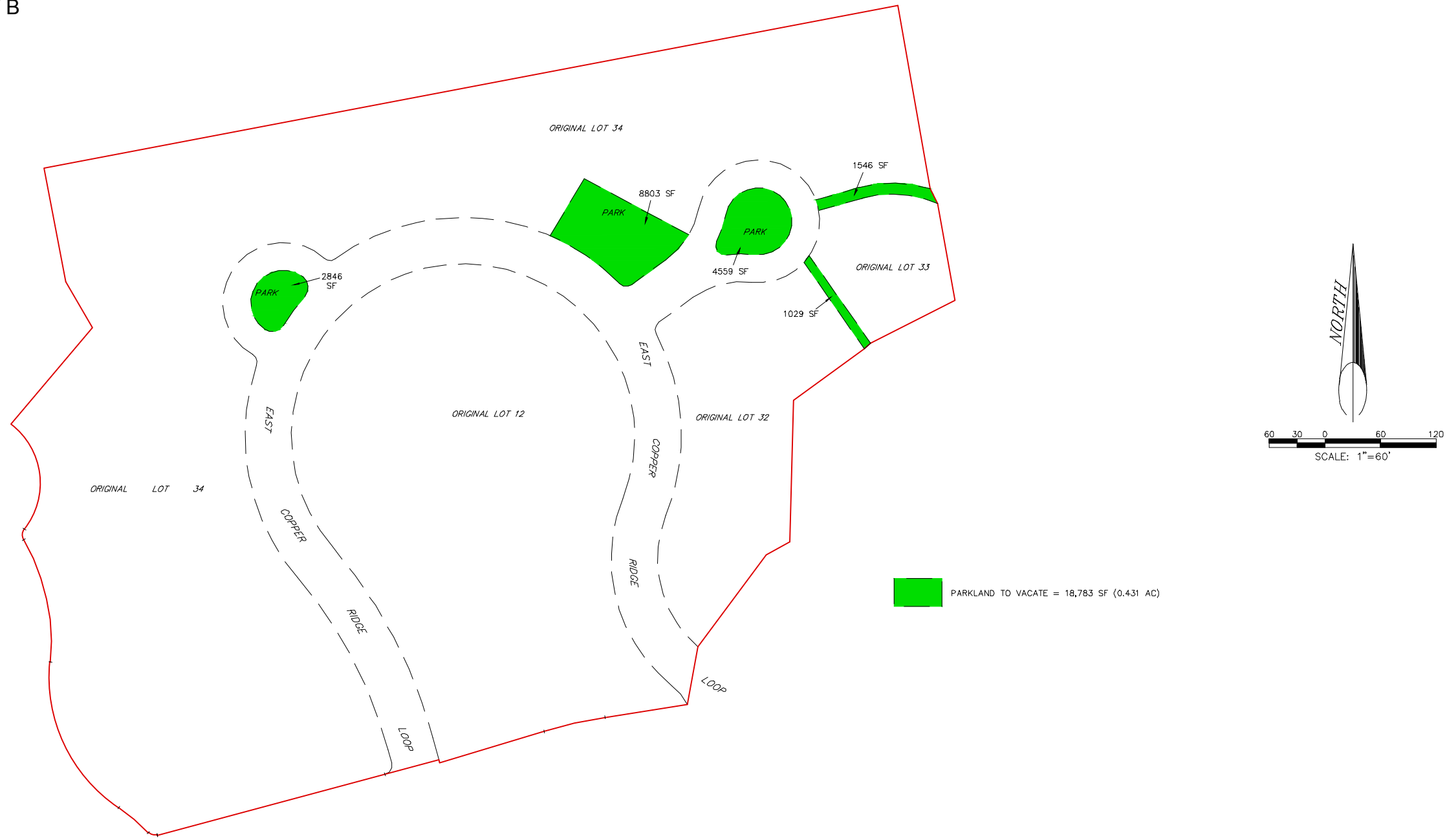


P:\PROJ\_MGMT\96012\_128\_Copper\_Ridge\_3rd&4th\_Reflections 2nd&3rd\_3rd\_4th\CADD\_C3D\BASE\_DWG\COPPER RIDGE 3RD PP.DWG, PARKLAND EXHIBIT, 7/20/2012 12:54:10 PM, mbertram, 1:2

ATTACHMENT B



PARKLAND VACATION EXHIBIT FOR  
**COPPER RIDGE SUBDIVISION, THIRD FILING**  
 BEING LOT 12 OF BLOCK 3, LOTS 32-34 OF BLOCK 4, AND DEDICATED PARKLAND IN BLOCK 4 OF  
 COPPER RIDGE SUBDIVISION, SECOND FILING  
 SITUATED IN THE SW1/4 OF SECTION 25, T. 1 N., R. 24 E., P.M.M. IN THE CITY OF BILLINGS,  
 YELLOWSTONE COUNTY, MONTANA

PREPARED FOR : COPPER RIDGE DEVELOPMENT CORP.

JULY, 2012

PREPARED BY : **SANDERSON STEWART**

BILLINGS, MONTANA