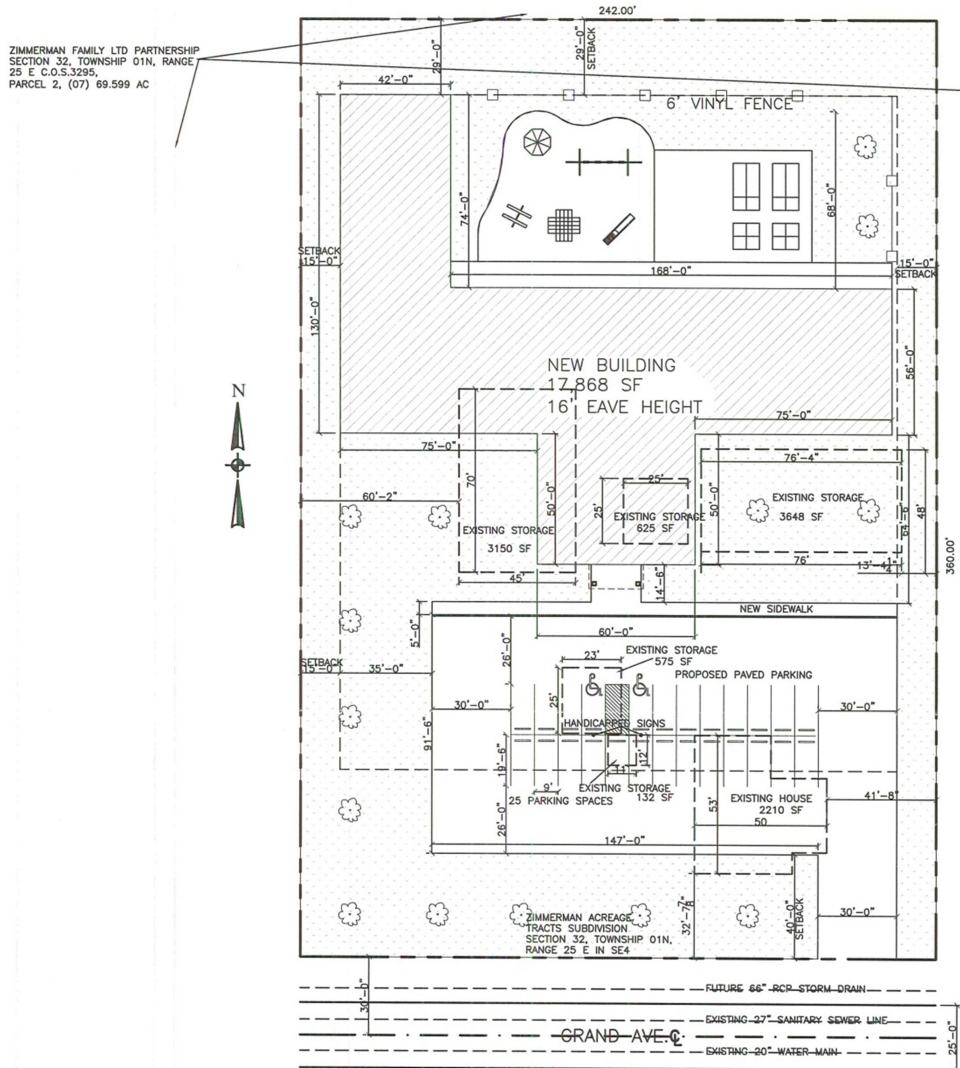


Attachment C Site Plan – SR #900



1
C1 **SITE PLAN**

ZONE: AGRICULTURAL OPEN
 PROPOSAL LOT COVERAGE = 19.8%

PARKING:
 SCHOOL, ELEMENTARY, AND JUNIOR HIGH PUBLIC,
 PRIVATE OF PAROCHIAL:
 5 SPACES PLUS ONE PER CLASSROOM WITH MINIMUM
 AUDITORIUM REQUIREMENTS
 5 SPACES + 6 CLASSROOMS = 11 PARKING SPACES

EXISTING BUILDINGS:
 ALL EXISTING BUILDINGS ARE PLANNED TO BE REMOVED

LANDSCAPING:
 APPROXIMATELY 42,210 SF OF LANDSCAPING WILL BE
 PROVIDED

SCALE: 11x17: 1"=40'
 SCALE: 24x36: 1"=20'

Drawn By: BV
 Checked By: RLB
 Date: 7-2-2012
 Project #:
 Cadd file:

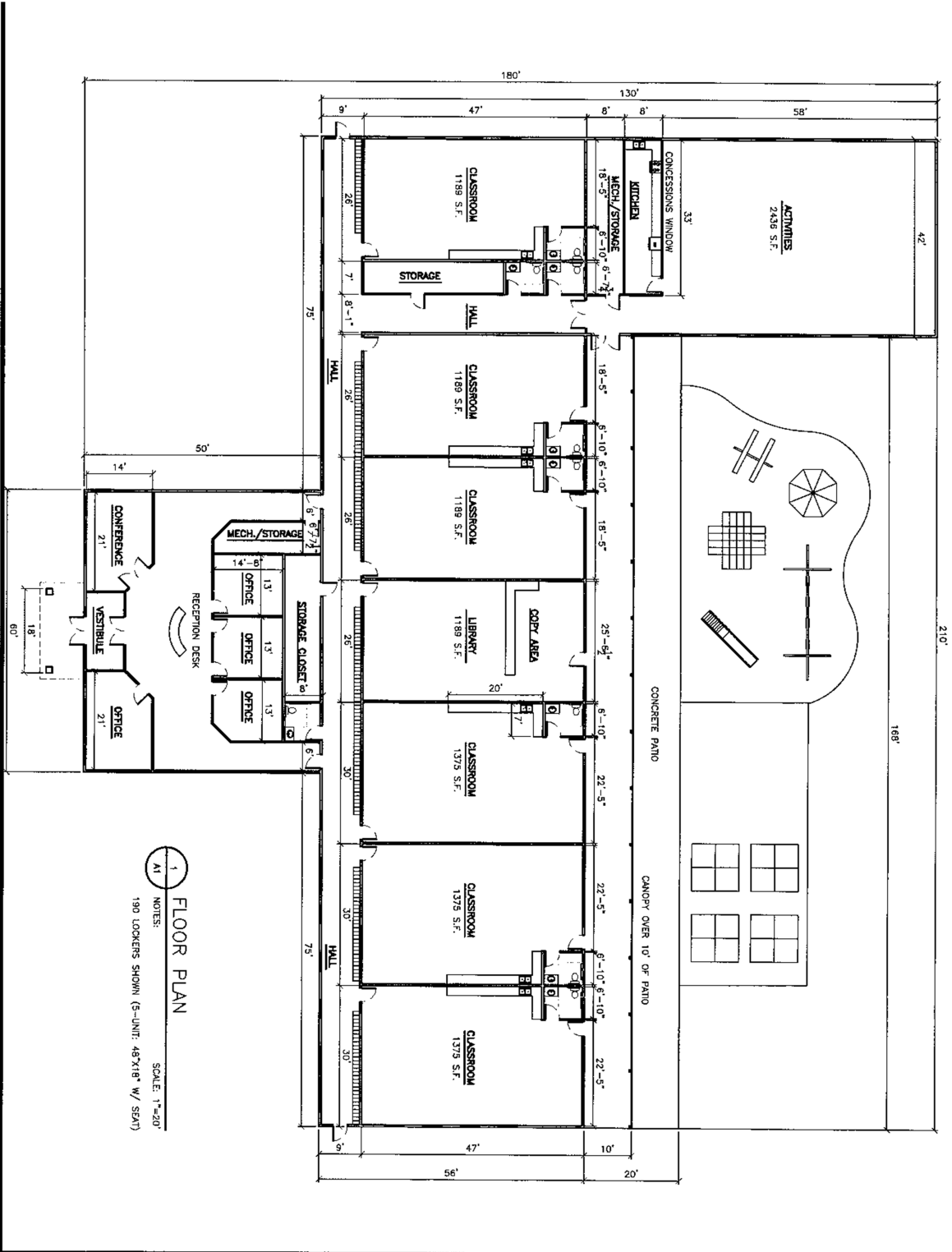


EGGART ENGINEERING COMPANY
 6809 KING AVE WEST
 UNIT E
 BILLINGS, MT 59106
 OFFICE: 406-839-9151 FAX: 406-839-9150

PROPOSED BUILDING
 GRACE MONTESSORI
 ACADEMY
 4809 GRAND AVE.
 BILLINGS, MT 59102

SCALE:
 SHEET#:
C1

Attachment C, continued
Site Plan – SR #900



Drawn By: BV
 Checked By: RLB
 Date: 7-2-2012
 Project #:
 Cadd file:



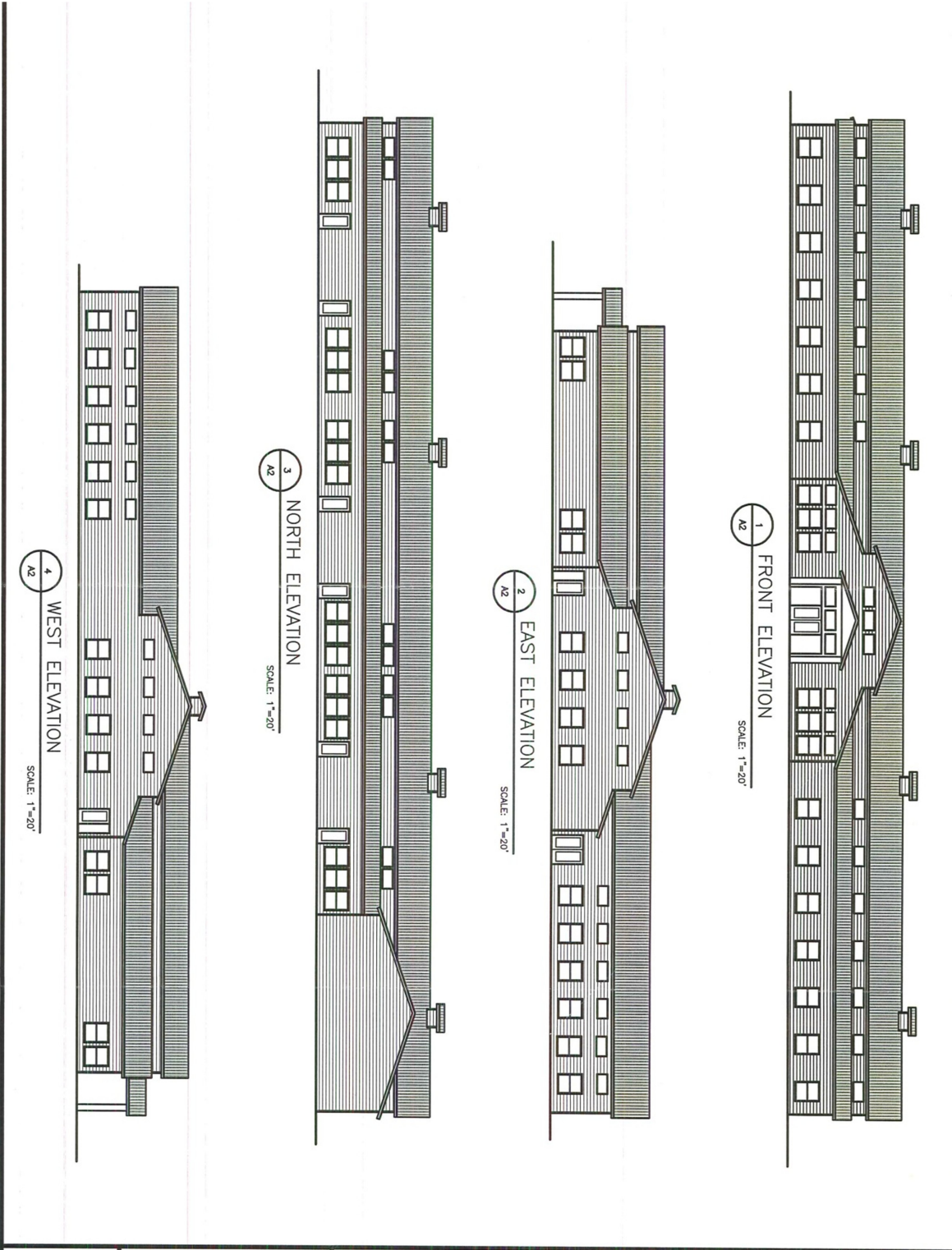
EGGART ENGINEERING COMPANY

EGGART ENGINEERING COMPANY
 6809 KING AVE WEST
 UNIT E
 BILLINGS, MT 59106
 OFFICE: 406-839-9151 FAX: 406-839-9150

PROPOSED BUILDING
GRACE MONTESSORI
ACADEMY
 4809 GRAND AVE.
 BILLINGS, MT 59102

SCALE:
 SHEET#:
A1

Attachment C, continued
Site Plan – SR #900



Drawn By: BV
 Checked By: RLB
 Date: 7-2-2012
 Project #:
 Cadd file:



EGGART ENGINEERING COMPANY
 6809 KING AVE WEST
 UNIT E
 BILLINGS, MT 59106
 OFFICE: 406-839-9151 FAX: 406-839-9150

PROPOSED BUILDING
GRACE MONTESSORI
ACADEMY
 4809 GRAND AVE.
 BILLINGS, MT 59102

SCALE:
 SHEET#: **A2**