

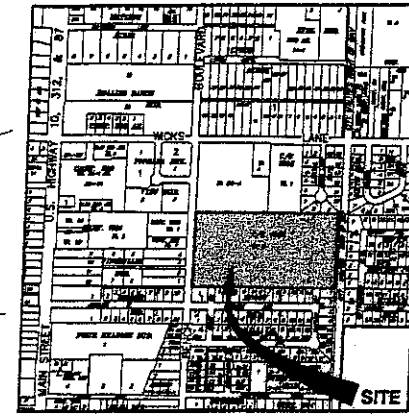
Attachment D

PLAT OF KINGSTON PLACE SUBDIVISION

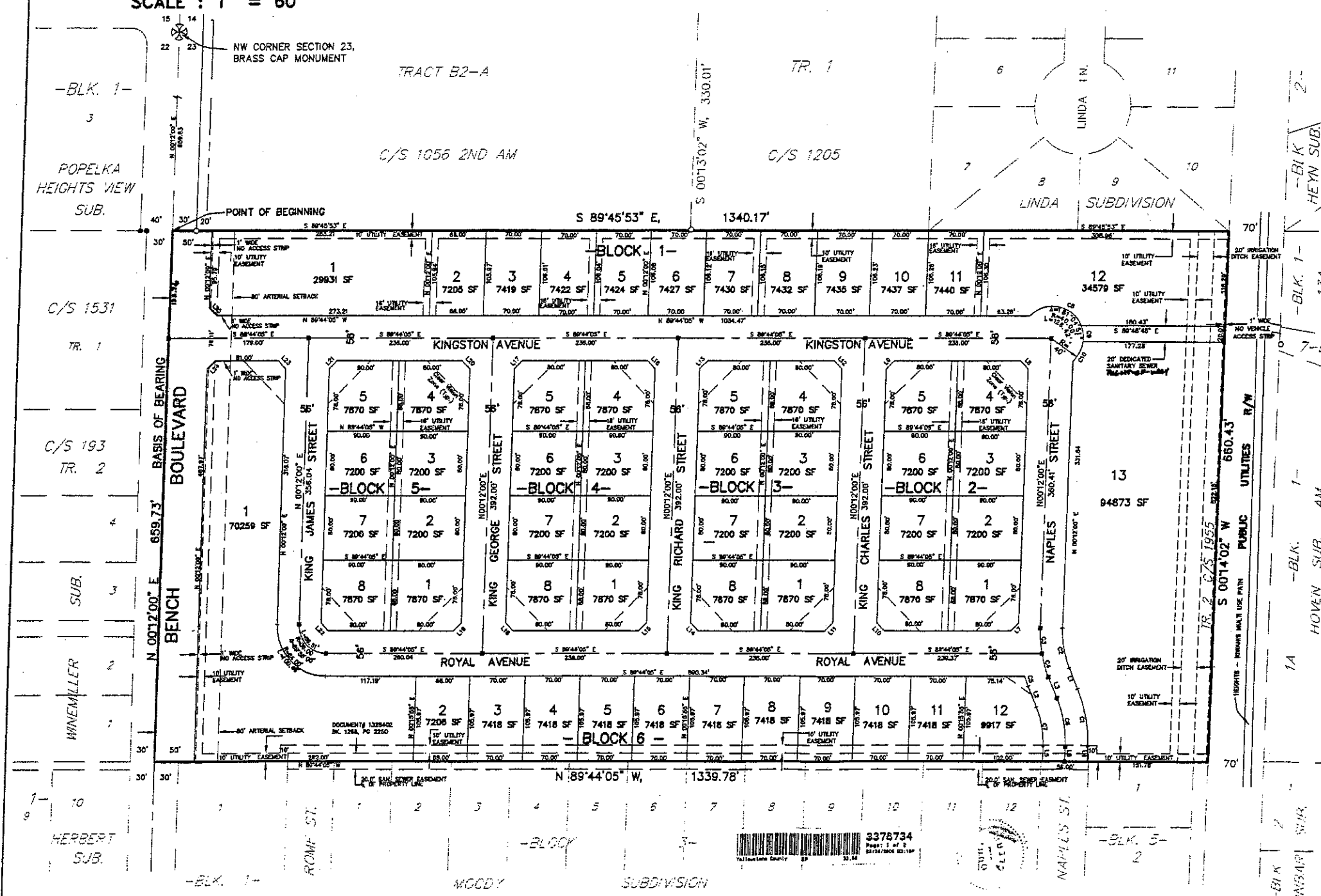
BEING TRACT B1-A, OF SECOND AMENDED TRACT B, CERTIFICATE OF SURVEY No. 1056
AND TRACT 2 OF CERTIFICATE OF SURVEY No. 1955
SITUATED IN THE NW 1/4 OF SEC. 23, T. 1 N., R. 26 E., P.M.M.
CITY OF BILLINGS, YELLOWSTONE COUNTY, MONTANA

PREPARED FOR: KING HEIGHTS, L.L.C.
PREPARED BY: ENGINEERING, INC.
SCALE: 1" = 60'

OCTOBER, 2005
BILLINGS, MONTANA



VICINITY MAP
NOT TO SCALE



BASIS OF BEARING = CENTERLINE OF BENCH BOULEVARD AS SHOWN ON CERTIFICATE OF SURVEY No. 1056

- = FOUND SURVEY MONUMENT, AS NOTED
- ✕ = SET 5/8" X 18" REBAR WITH CAP MARKED WITH THE LICENSE NUMBER OF THE UNDERSIGNED LAND SURVEYOR AND "ENGINEERING INC., BILLINGS MT"
- = SET INTERSECTION MONUMENT, 5/8" X 18" REBAR WITH CAP MARKED WITH THE LICENSE NUMBER OF THE UNDERSIGNED LAND SURVEYOR AND "ENGINEERING INC., BILLINGS MT". WILL BE REPLACED WITH BRASS CAP MONUMENT BOX UPON COMPLETION OF STREET IMPROVEMENTS.

LINE	LENGTH	BEARING
L1	28.58	S89°45'53" E
L2	28.58	S89°45'53" E
L3	28.58	S89°45'53" E
L4	28.58	S89°45'53" E
L5	28.58	S89°45'53" E
L6	28.58	S89°45'53" E
L7	28.58	S89°45'53" E
L8	28.58	S89°45'53" E
L9	28.58	S89°45'53" E
L10	28.58	S89°45'53" E
L11	28.58	S89°45'53" E
L12	28.58	S89°45'53" E
L13	28.58	S89°45'53" E
L14	28.58	S89°45'53" E
L15	28.58	S89°45'53" E
L16	28.58	S89°45'53" E
L17	28.58	S89°45'53" E
L18	28.58	S89°45'53" E
L19	28.58	S89°45'53" E
L20	28.58	S89°45'53" E
L21	28.58	S89°45'53" E
L22	28.58	S89°45'53" E
L23	28.58	S89°45'53" E
L24	28.58	S89°45'53" E
L25	28.58	S89°45'53" E

CURVE	LENGTH	RADIUS	DELTA	CHORD	CH BEARING
C1	74.80	178.00	22.80°	73.07	S11°20'20" W
C2	52.83	122.00	22.80°	51.44	S11°20'20" W
C3	52.83	122.00	22.80°	51.44	S11°20'20" W
C4	52.83	122.00	22.80°	51.44	S11°20'20" W
C5	52.83	122.00	22.80°	51.44	S11°20'20" W
C6	52.83	122.00	22.80°	51.44	S11°20'20" W
C7	52.83	122.00	22.80°	51.44	S11°20'20" W
C8	52.83	122.00	22.80°	51.44	S11°20'20" W
C9	52.83	122.00	22.80°	51.44	S11°20'20" W
C10	52.83	122.00	22.80°	51.44	S11°20'20" W
C11	52.83	122.00	22.80°	51.44	S11°20'20" W
C12	52.83	122.00	22.80°	51.44	S11°20'20" W
C13	52.83	122.00	22.80°	51.44	S11°20'20" W
C14	52.83	122.00	22.80°	51.44	S11°20'20" W
C15	52.83	122.00	22.80°	51.44	S11°20'20" W
C16	52.83	122.00	22.80°	51.44	S11°20'20" W
C17	52.83	122.00	22.80°	51.44	S11°20'20" W
C18	52.83	122.00	22.80°	51.44	S11°20'20" W
C19	52.83	122.00	22.80°	51.44	S11°20'20" W
C20	52.83	122.00	22.80°	51.44	S11°20'20" W

3378734
Page 1 of 3
Billings, Montana

File Copy