

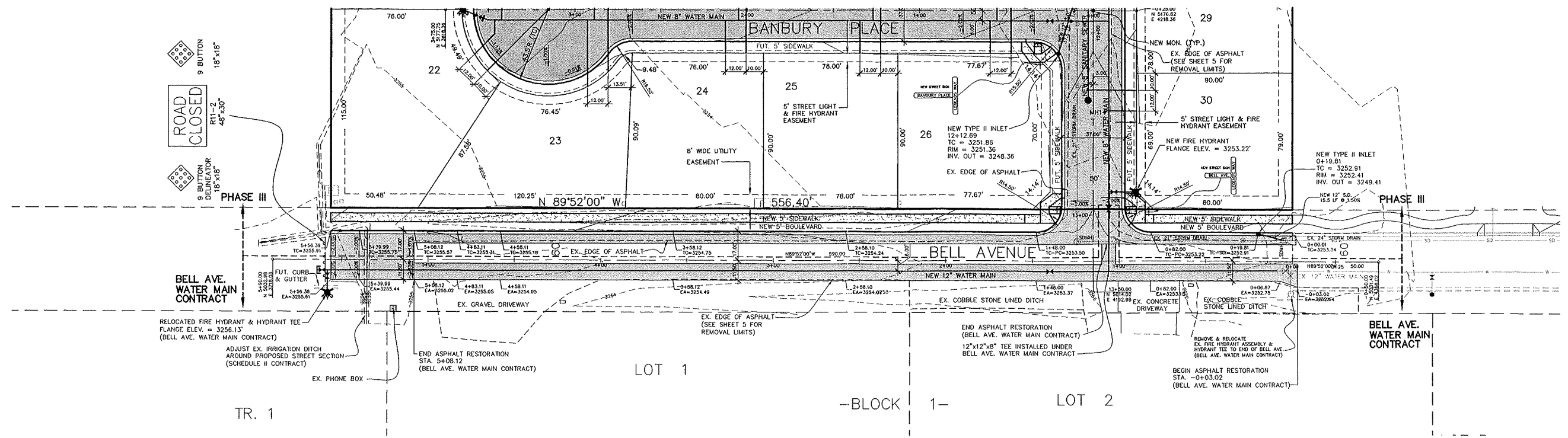


PRIVATE CONTRACT No. 639
TO PROVIDE WATER, SANITARY SEWER, STORM DRAIN AND STREET
IMPROVEMENTS FOR LEGENDS WEST SUBDIVISION, PHASE III
BILLINGS, MONTANA

CAD: LTS
DATE: 7/09/12
REVISIONS: 7/26/12

APPROVED BY: DDR
QUALITY ASSURANCE:
TB (7/12/12)

SCALE: AS SHOWN
FILE: LEGENDS_WEST_PH_III_BASE
PROJECT NO.: 98050.40
SHEET 4 OF 10



ISSUED FOR CONSTRUCTION

NOTE:
-EXISTING UNDERGROUND INSTALLATIONS & PRIVATE UTILITIES SHOWN ARE INDICATED ACCORDING TO THE BEST INFORMATION AVAILABLE TO THE ENGINEER. THE ENGINEER DOES NOT GUARANTEE THE ACCURACY OF SUCH INFORMATION. SERVICE LINES (WATER, POWER, GAS, STORM, SEWER, TELEPHONE & TELEVISION) MAY NOT BE STRAIGHT LINES OR AS INDICATED ON THE PLANS. STATE LAW REQUIRES CONTRACTOR TO CALL ALL UTILITY COMPANIES BEFORE EXCAVATION FOR EXACT LOCATIONS.
-ALL IMPROVEMENTS SHALL BE PERFORMED IN ACCORDANCE WITH MONTANA PUBLIC WORKS STANDARD SPECIFICATIONS 6TH EDITION, APRIL, 2010, AND THE CITY OF BILLINGS STANDARD MODIFICATIONS MANUAL, DATED FEBRUARY, 2011.
-UNLESS OTHERWISE SPECIFIED, ALL CONSTRUCTION LAYOUT AND STAKING SHALL BE PERFORMED UNDER THE RESPONSIBLE CHARGE OF A LAND SURVEYOR LICENSED IN THE STATE OF MONTANA AND BY A PARTY CHIEF OR ENGINEERING TECHNICIAN EXPERIENCED IN CONSTRUCTION LAYOUT AND STAKING TECHNIQUES AS ARE REQUIRED BY THE SPECIFIC TYPE OF WORK BEING PERFORMED.

SCALE
PLAN : 1" = 30'
PROFILE
HORIZ. : 1" = 30'
VERT. : 1" = 5'

