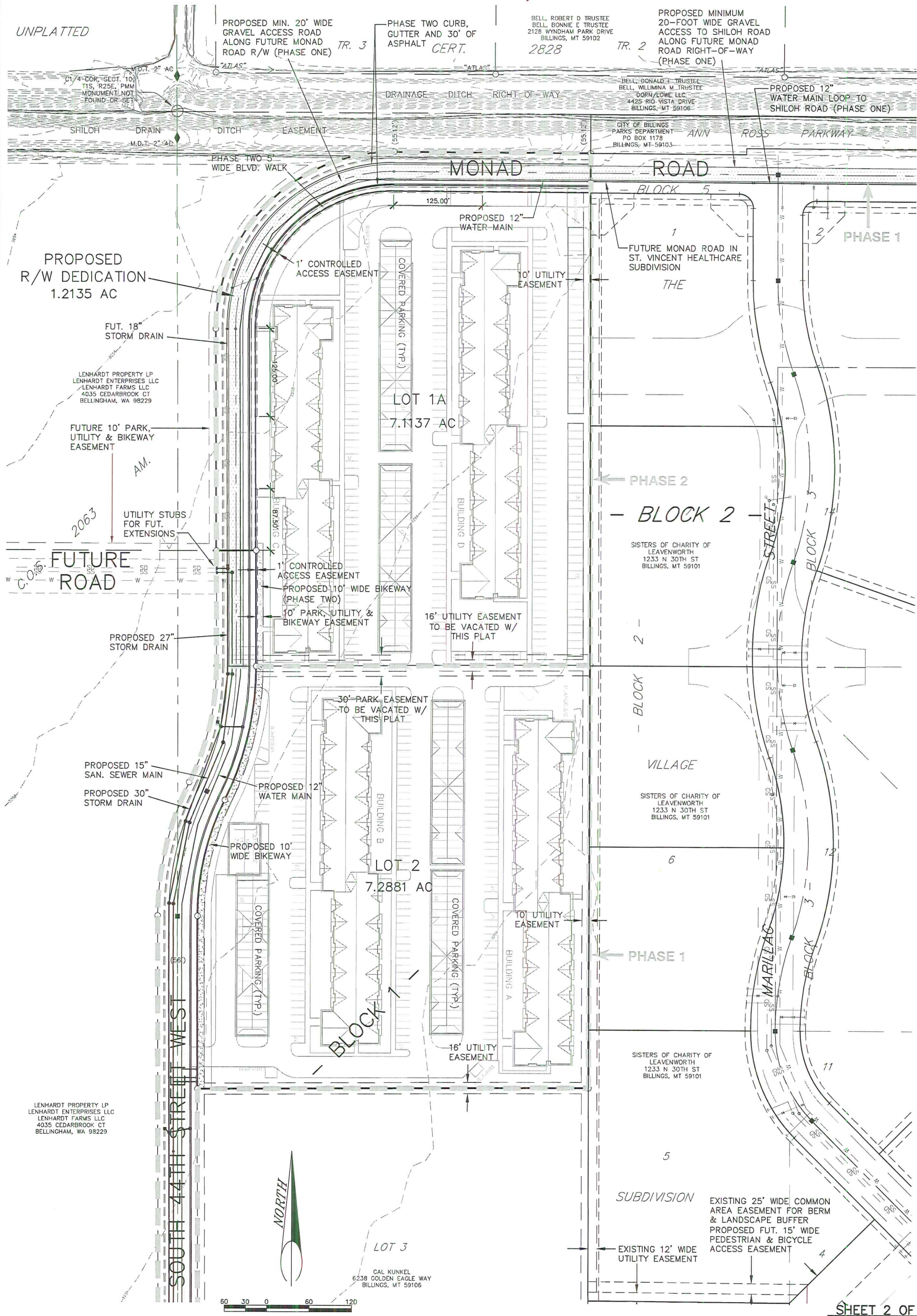


**PRELIMINARY AMENDED PLAT OF
 LOTS 1 & 2, BLOCK 1, LENHARDT SQUARE SUBDIVISION, FIRST FILING,
 SITUATED IN THE SE1/4 AND SW1/4 OF SECTION 10, T. 1 S., R. 25 E., P.M.M.
 YELLOWSTONE COUNTY, MONTANA**



SHEET 2 OF 2

P:\PROJECTS\2012\20120814\20120814_01\20120814_01.dwg, 11/08/12 11:02:23 AM, 11/08/12 11:02:23 AM, 11/08/12 11:02:23 AM, 11/08/12 11:02:23 AM