

# MONTANA SAPPHIRE SUBDIVISION

SITUATED IN THE N.E. 1/4 OF SECTION 15, T.1S., R. 25 E., P.M.M.  
BILLINGS, YELLOWSTONE COUNTY, MONTANA

PREPARED FOR : INLAND GROUP  
PREPARED BY : SANDERSON STEWART  
SCALE : 1" = 60'

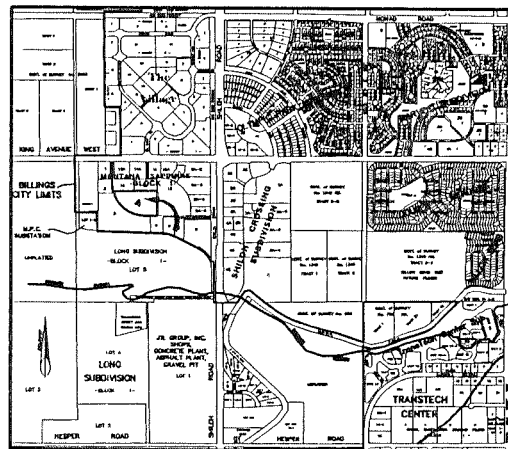
JANUARY, 2013  
BILLINGS, MONTANA

60 30 0 60 120



### PLAT DATA

GROSS AREA	= 7.2831 ACRES	EXISTING ZONING	= HIGHWAY COMMERCIAL & SOUTH SHILOH CORRIDOR OVERLAY DISTRICT
NET AREA	= 7.2831 ACRES		
NUMBER OF LOTS	= 2	SURROUNDING ZONING:	
MINIMUM LOT SIZE	= 1.31 ACRES	NORTH	= ENTRYWAY LIGHT INDUSTRIAL & SOUTH SHILOH CORRIDOR OVERLAY DISTRICT
MAXIMUM LOT SIZE	= 5.97 ACRES	SOUTH	= HIGHWAY COMMERCIAL & SOUTH SHILOH CORRIDOR OVERLAY DISTRICT
LINEAL FEET OF STREETS	= 0	EAST	= HIGHWAY COMMERCIAL & SOUTH SHILOH CORRIDOR OVERLAY DISTRICT
PARKLAND REQUIREMENT	= NA	WEST	= ENTRYWAY LIGHT INDUSTRIAL & SOUTH SHILOH CORRIDOR OVERLAY DISTRICT
PARKLAND DEDICATION	= NA		
EXISTING LAND USE	= VACANT/UNDEVELOPED		
PROPOSED LAND USE	= COMMERCIAL DEVELOPMENT		



**VICINITY MAP**  
NOT TO SCALE

