

RIGHT-OF-WAY EXHIBIT FOR

REFLECTIONS at COPPER RIDGE SUBDIVISION THIRD FILING

BEING LOTS 1, 2, 3 & PARKLAND IN BLOCK 1 AND VACATED REFLECTIONS CIRCLE
RIGHT-OF-WAY IN REFLECTIONS AT COPPER RIDGE SUBDIVISION
SITUATED IN THE SE1/4 OF SECTION 25, T. 1 N., R. 24 E., P.M.M.
IN THE CITY OF BILLINGS, YELLOWSTONE COUNTY, MONTANA

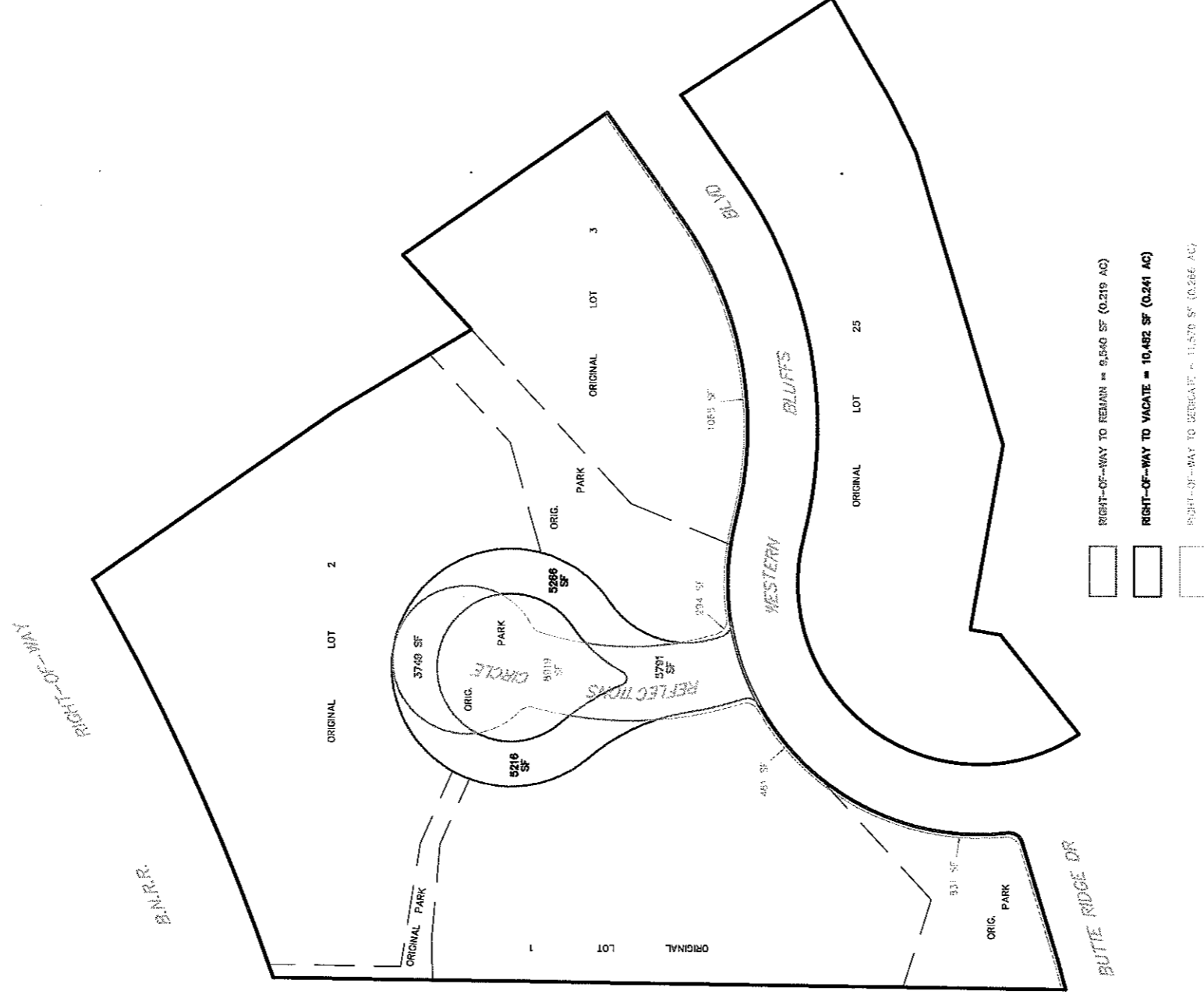
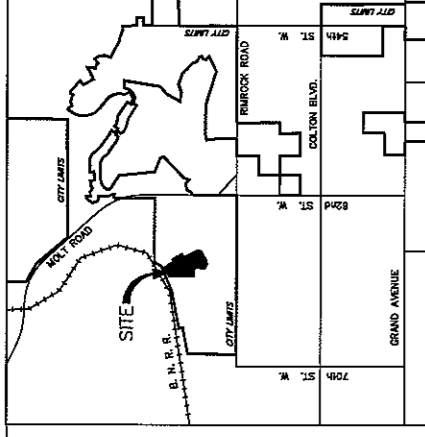
PREPARED FOR : REFLECTIONS AT COPPER RIDGE, LLC

JANUARY, 2012

PREPARED BY : **SANDERSONSTEWART**

BILLINGS, MONTANA

VICINITY MAP
NOT TO SCALE



SUMMARY:
PREVIOUS DEDICATION: 20,022 SF
THIS PLAT: 21,110 SF



SCALE: 1"=100'