

Park Land to be Conveyed

REFLECTIONS AT COPPER RIDGE SUBDIVISION

PREPARED FOR : REFLECTIONS AT COPPER RIDGE, LLC

APRIL, 2013

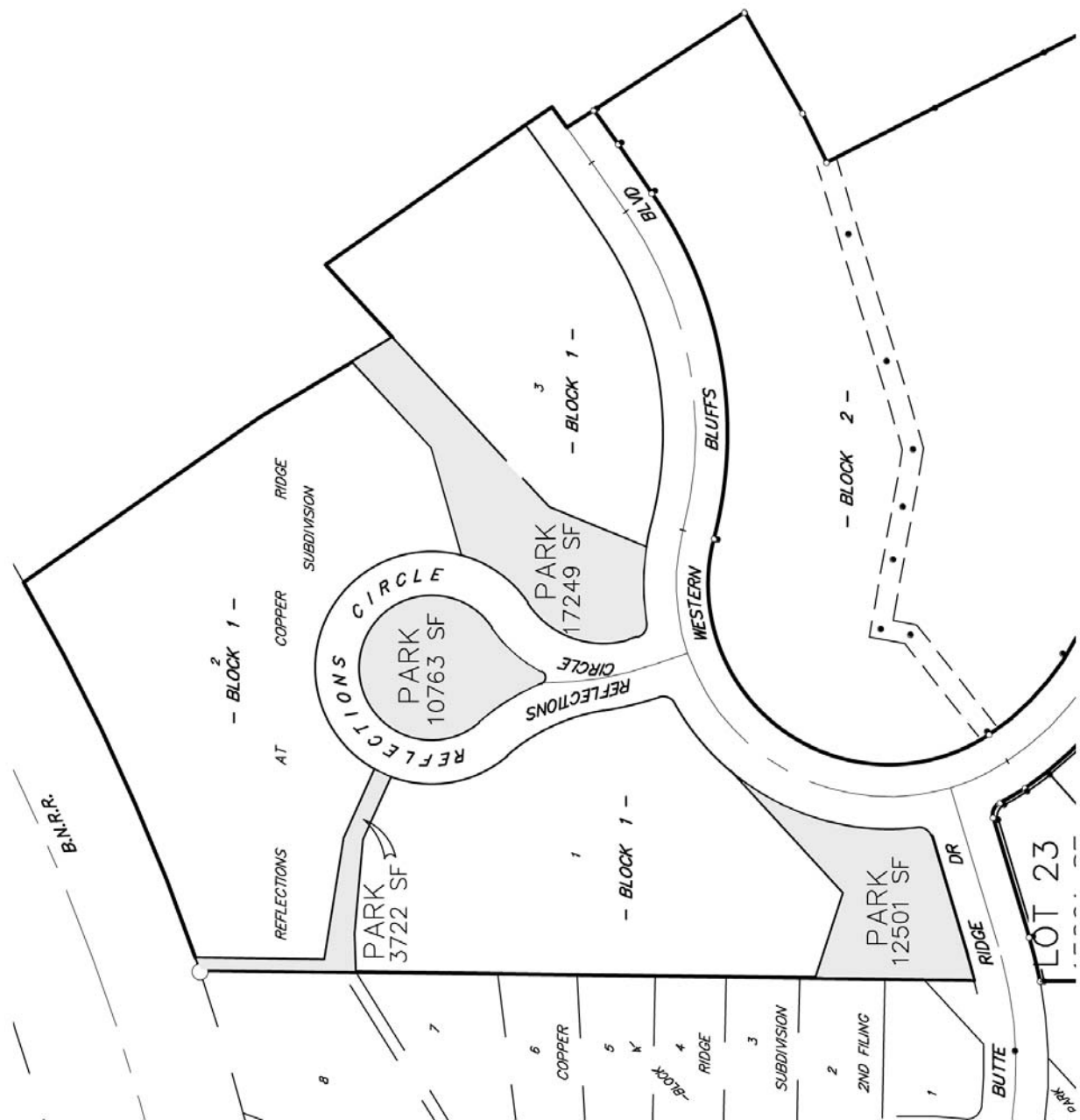
PREPARED BY : SANDERSON STEWART

BILLINGS, MONTANA

BEING LOTS 1, 2, 3 & PARKLAND IN BLOCK 1 AND VACATED REFLECTIONS CIRCLE RIGHT-OF-WAY IN REFLECTIONS AT COPPER RIDGE SUBDIVISION AND LOT 27 IN BLOCK 2 OF REFLECTIONS AT COPPER RIDGE SUBDIVISION, SECOND FILING SITUATED IN THE SE1/4 OF SECTION 25, T. 1 N., R. 24 E., P.M.M. IN THE CITY OF BILLINGS, YELLOWSTONE COUNTY, MONTANA

AREA DATA

PARK LAND ABANDONED = 1.015 ACRES ±
(3722 SQ FEET)
(10763 SQ FEET)
(17249 SQ FEET)
(12501 SQ FEET)
(44,235 SQ FEET)



SCALE: 1"=150'