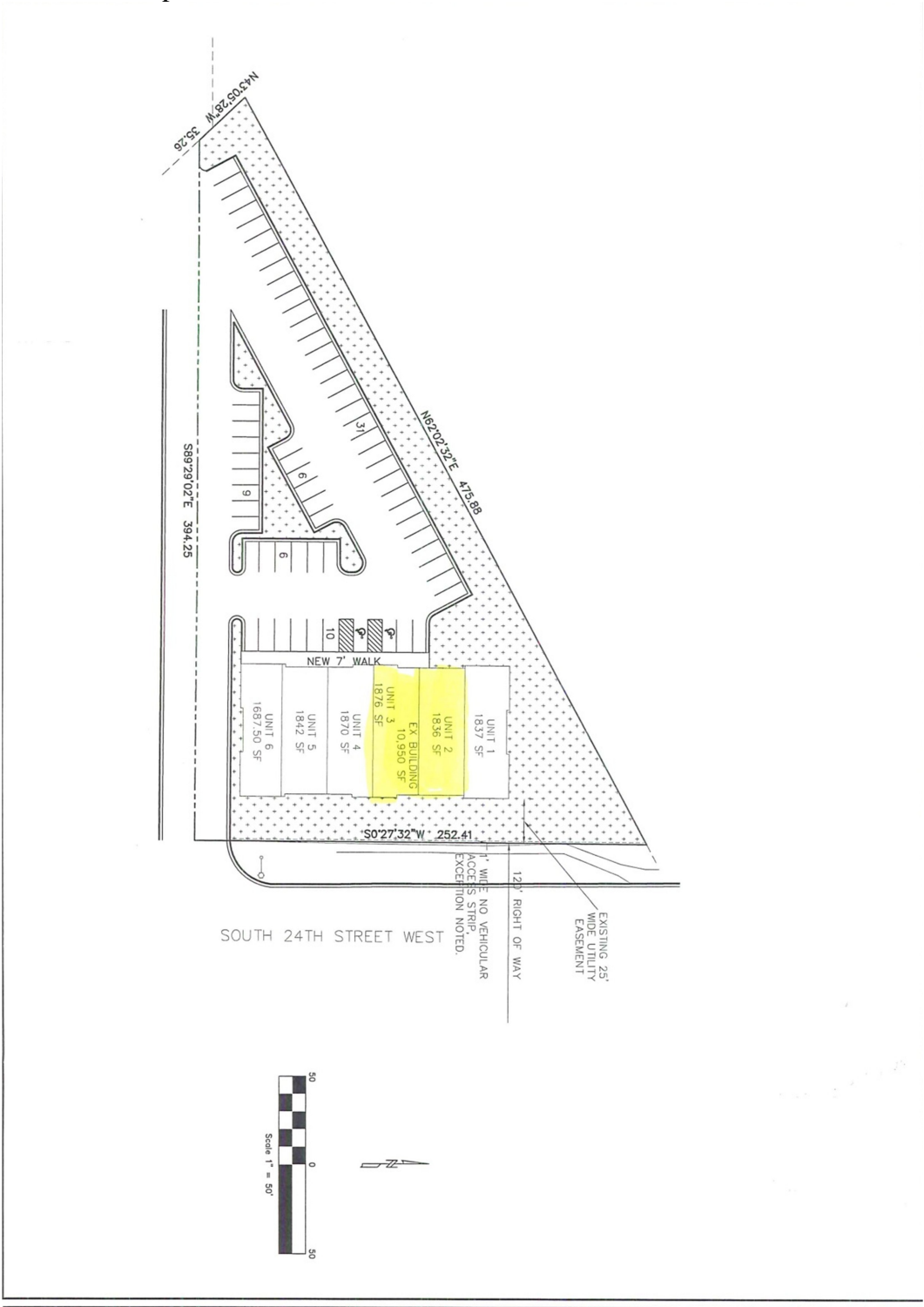


Attachment C – Site Plan

Special Review #906 – 900 S 24th St West – Units 2 & 3



	LOT 5, MIDLAND SUBDIVISION	DRAWN BY: CAG	NO.	DATE	COMMENTS
	SITE LAYOUT	CHECKED BY: MDP			
		DATE: 5/6/13	SCALE: 1"=50'		
		JOB# 13101	DRAWING: EXHIBIT		

BLUELINE ENGINEERING LLC
 2110 OVERLAND AVENUE, SUITE 119B
 BILLINGS, MT 59102
 PHONE 294-2294 / FAX 294-2295

