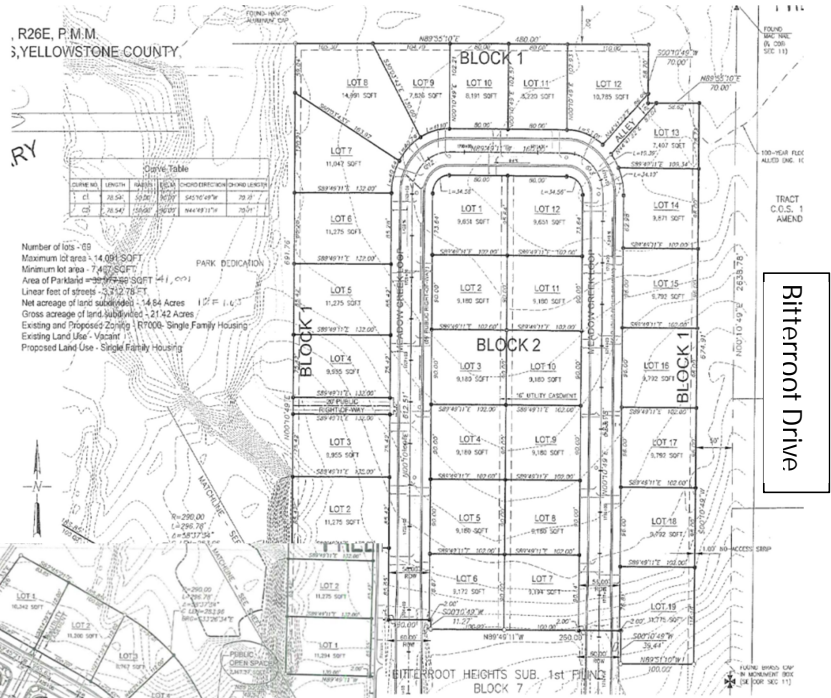
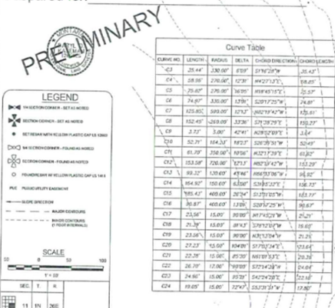


Bitterroot Heights Subdivision, 2nd Filing Preliminary plat sheets (combined)



3A-1, C/S 2317
SECTION 11, T1N, R26E, P.M.M.
CITY OF BILLINGS, YELLOWSTONE COUNTY,
MONTANA

Date Prepared:
Prepared for:



Empire Drive—entryway
from Bitterroot Drive—
platted in 1st Filing