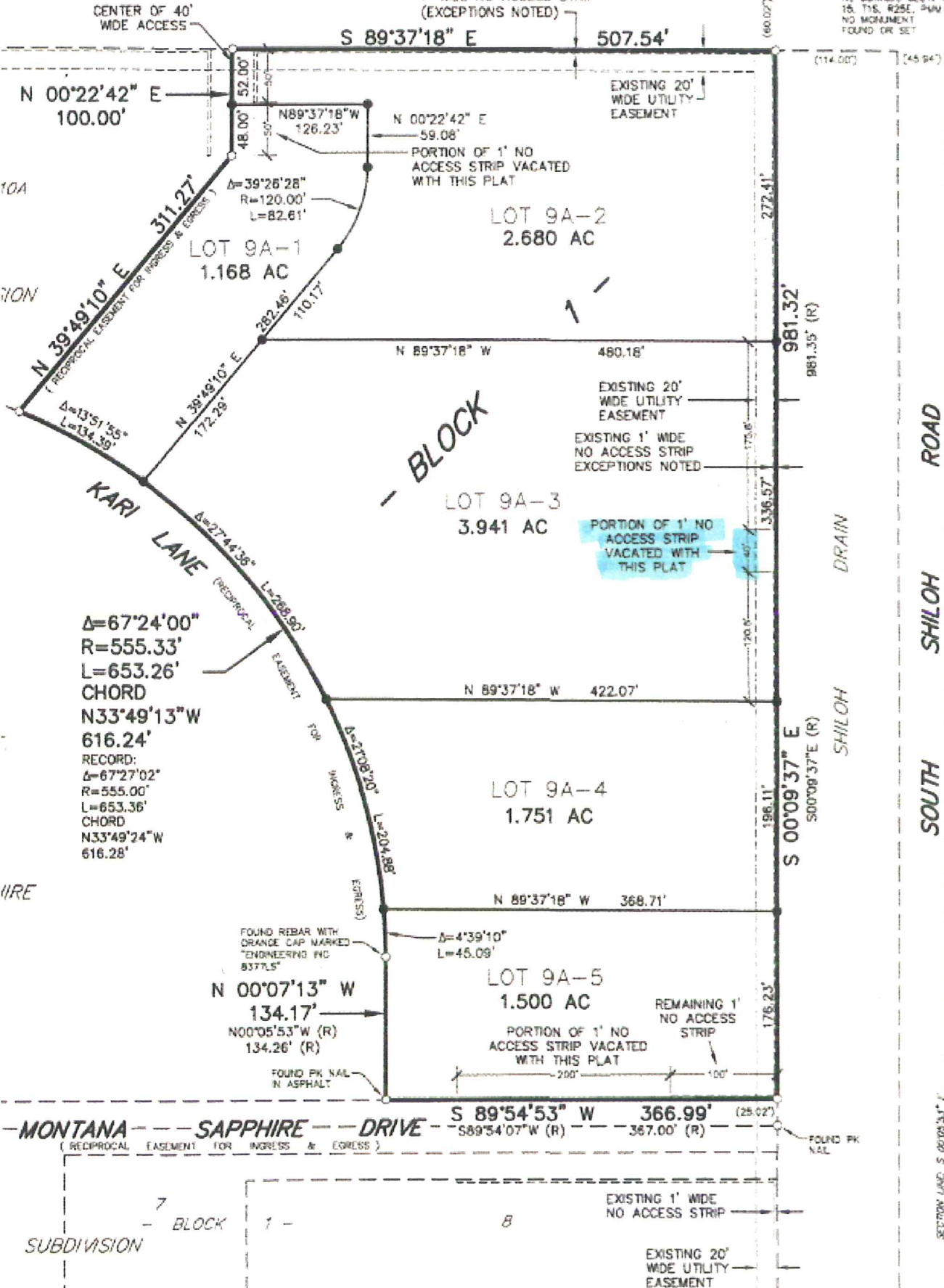


S 89°36'32" E

KING AVENUE WEST

1' WIDE NO ACCESS STRIP (EXCEPTIONS NOTED)

NE CORNER, SECT. 15, T15, R25E, 34M NO MONUMENT FOUND OR SET



SOUTH SHILOH ROAD

SECTION LAND: S 00°09'37" E