



PRELIMINARY PLAT OF ST. VINCENT HEALTHCARE SUBDIVISION

BEING ALL OF BLOCKS 1, 2, 3, 4 AND 5 OF THE VILLAGE SUBDIVISION INCLUDING RIGHTS-OF-WAY FOR MONAD ROAD, MARILLAC STREET, ST. VINCENT WAY, ST. MARY WAY AND DECATHLON PARKWAY SITUATED IN THE SE1/4 OF SECTION 10, T 1 S., R. 25 E., P.M.M., IN THE CITY OF BILLINGS, YELLOWSTONE COUNTY, MONTANA

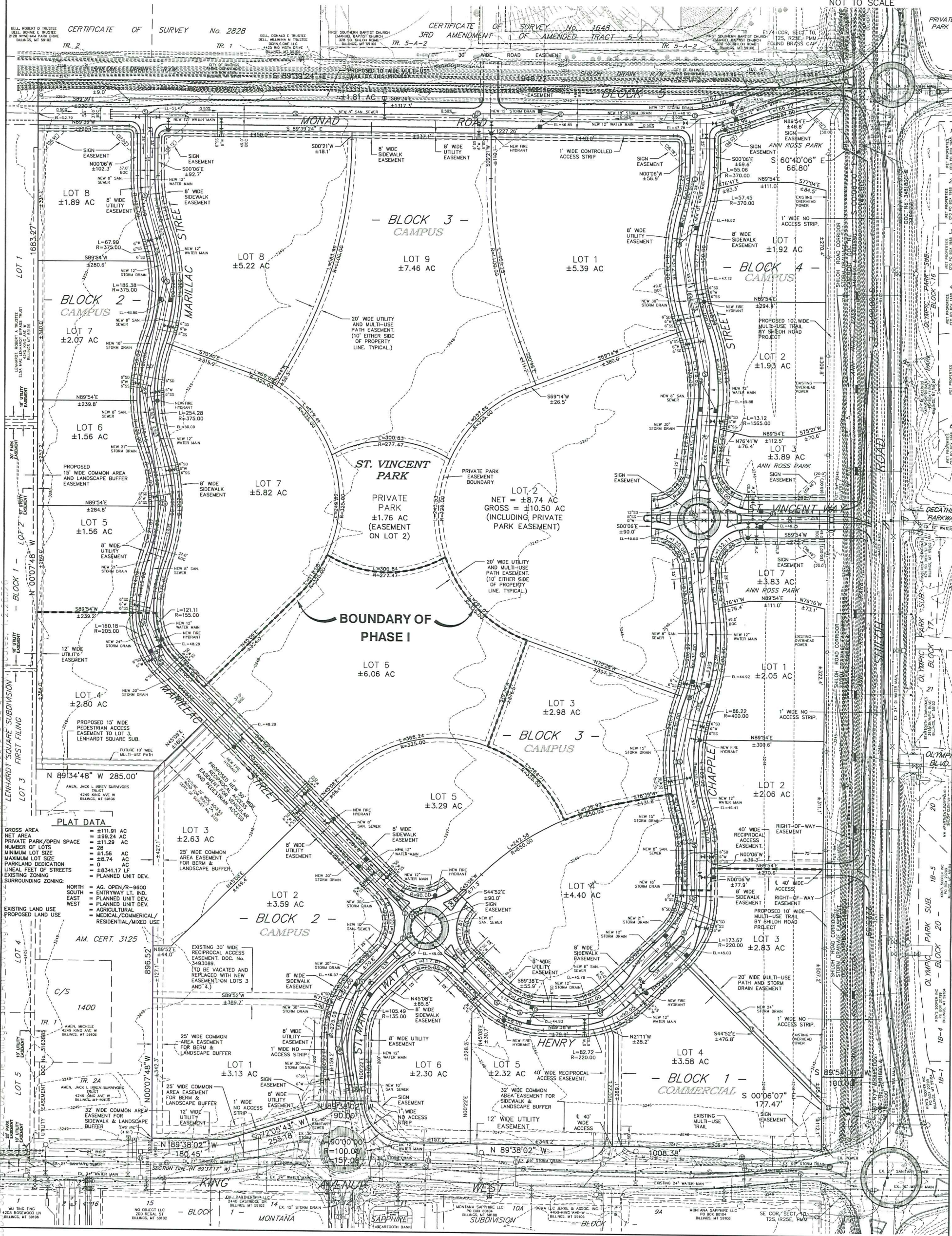
PREPARED FOR : ST. VINCENT HEALTHCARE FOUNDATION, INC.

PREPARED BY : SANDERSON STEWART

MAY, 2010
BILLINGS, MONTANA



VICINITY MAP
NOT TO SCALE



PLAT DATA

GROSS AREA	= 1111.91 AC
NET AREA	= 1111.91 AC
PRIVATE PARK/OPEN SPACE	= 111.29 AC
NUMBER OF LOTS	= 28
MAXIMUM LOT SIZE	= 11.56 AC
MINIMUM LOT SIZE	= 0.74 AC
PARKLAND DEDICATION	= 0 AC
LINEAL FEET OF STREETS	= 8341.17 LF
EXISTING ZONING	= PLANNED UNIT DEV.
SURROUNDING ZONING:	
NORTH	= AC. OPEN/R-9600
SOUTH	= ENTRYWAY LT. IND.
EAST	= PLANNED UNIT DEV.
WEST	= PLANNED UNIT DEV.
EXISTING LAND USE	= AGRICULTURAL
PROPOSED LAND USE	= MEDICAL/COMMERCIAL/RESIDENTIAL/MIXED USE