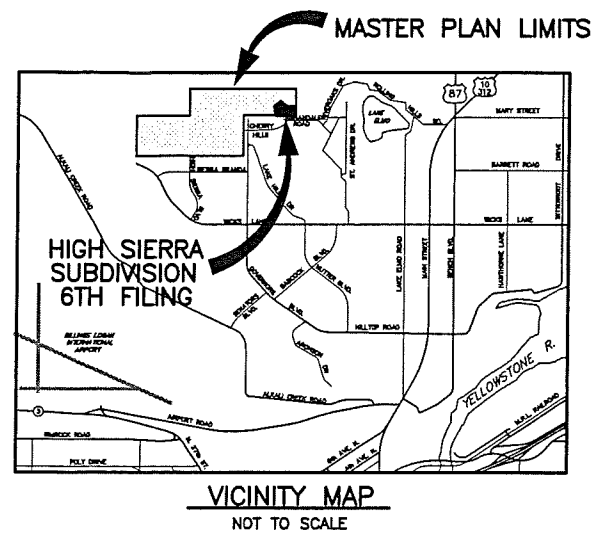
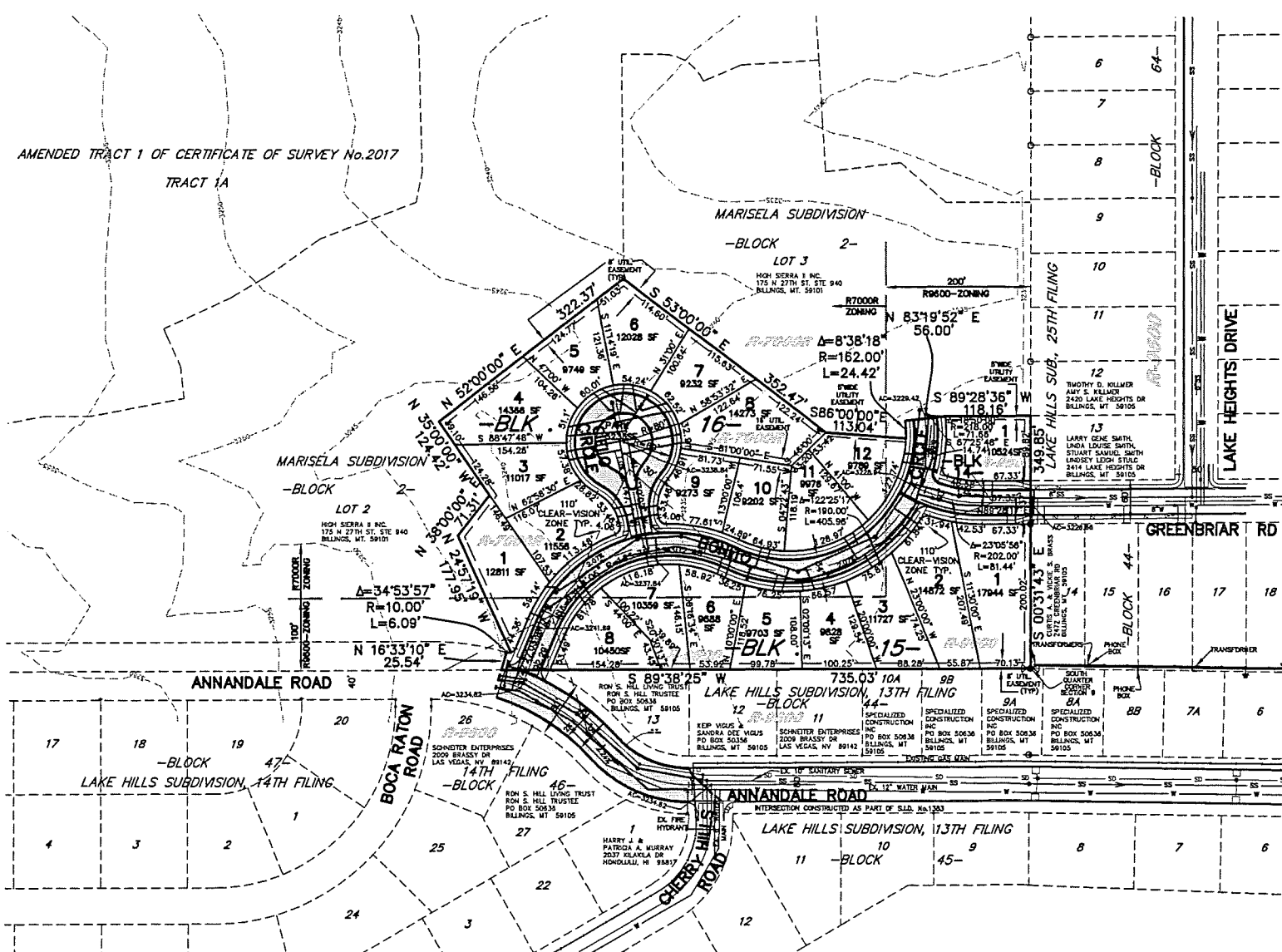


PRELIMINARY PLAT OF  
**HIGH SIERRA SUBDIVISION, SIXTH FILING**  
 BEING LOT 1, BLOCK 2, OF MARISELA SUBDIVISION  
 SITUATED IN THE S.W.1/4 OF SECTION 9, T.1N., R.26E., P.M.M.  
 YELLOWSTONE COUNTY, MONTANA

PREPARED FOR: HIGH SIERRA II INC.  
 PREPARED BY: ENGINEERING, INC.  
 SCALE: 1"=100'

NOVEMBER, 2008  
 BILLINGS, MONTANA



**PLAT DATA**

GROSS AREA	=	7.18 ACRES
NET AREA	=	5.47 ACRES
NUMBER OF LOTS	=	21
MINIMUM LOT SIZE	=	9202 S.F.
MAXIMUM LOT SIZE	=	17944 S.F.
LINEAL FEET OF STREETS	=	1518 L.F.
PARKLAND REQUIREMENT	=	0.601 ACRES
PARKLAND DEDICATION	=	0.120 ACRES & CASH-IN-LIEU
EXISTING ZONING	=	R-7000R & R-9600
SURROUNDING ZONING:		
NORTH	=	R-7000R & R-9600
SOUTH	=	R-9600
EAST	=	R-9600
WEST	=	R-7000R & R-9600
EXISTING LAND USE	=	AGRICULTURAL
PROPOSED LAND USE	=	RESIDENTIAL

