

# EMMA JEAN HEIGHTS SUBDIVISION 2ND FILING

BEING TRACT "1A" OF AMENDED TRACT 1 OF  
 CERTIFICATE OF SURVEY 999  
 SITUATED IN NE 1/4  
 SECTION 23, T1N, R26E, P.M.M.  
 CITY OF BILLINGS,  
 YELLOWSTONE COUNTY, MONTANA

Prepared for: FELTON ASSOCIATES, INC.  
 P.O. BOX 460129  
 HUSON, MT. 59846

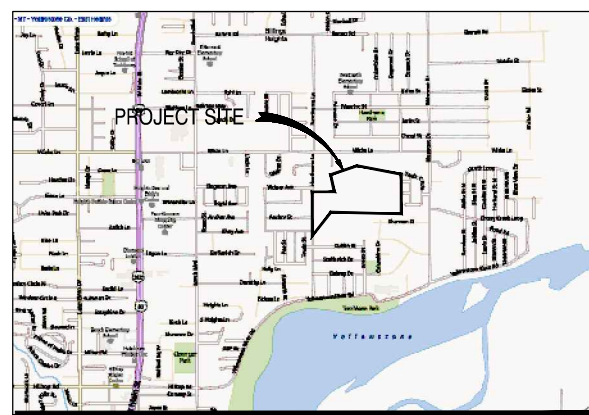
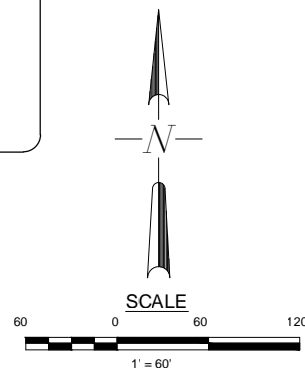
Prepared by: INTERSTATE ENGINEERING, Inc.  
 P.O. BOX 20953  
 BILLINGS, MT. 59104-0953

DATE: FEBRUARY 2014

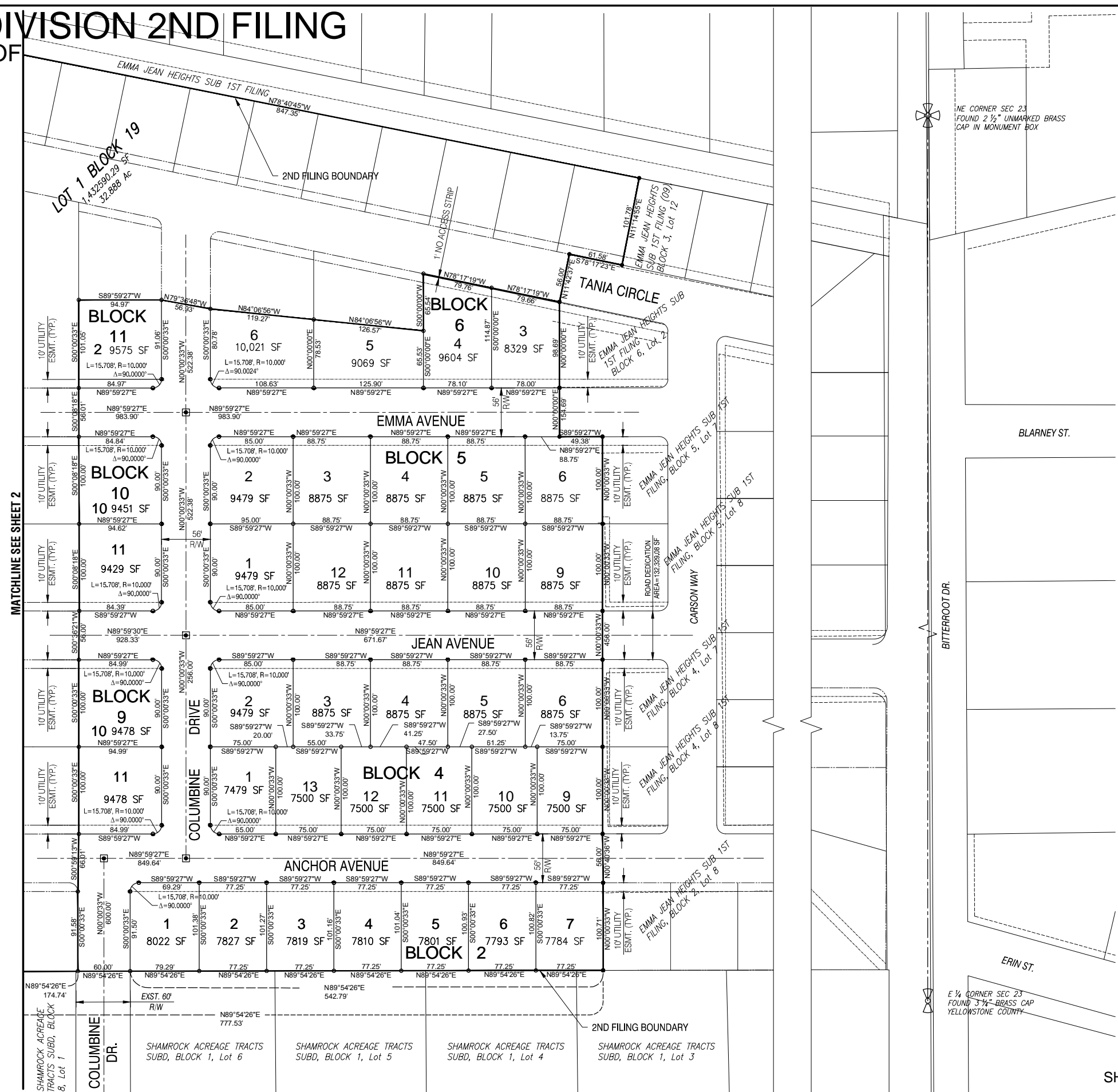
**LEGEND**

- 1/4 SECTION CORNER - SET AS NOTED
- SECTION CORNER - SET AS NOTED
- FOUND REBAR WITH YELLOW PLASTIC CAP
- 1/4 SECTION CORNER - FOUND AS NOTED
- SECTION CORNER - FOUND AS NOTED
- SET 5/8" x 18" REBAR WITH YPC 12669 LS
- TO BE SET
- CENTER MONUMENT IN MONUMENT BOX

**BASIS OF BEARING**  
 Considering the basis of bearing to be the East  
 line of the NE 1/4 of Section 23, T. 1 N., R. 26 E.,  
 said line having a bearing of S00°15'32" W.



VICINITY MAP



NE CORNER SEC 23  
 FOUND 2 1/2" UNMARKED BRASS  
 CAP IN MONUMENT BOX

BLARNEY ST.

BITTERROOT DR.

ERIN ST.

E 1/4 CORNER SEC 23  
 FOUND 3/4" BRASS CAP  
 YELLOWSTONE COUNTY

# EMMA JEAN HEIGHTS SUBDIVISION 2ND FILING

BEING TRACT "1A" OF AMENDED TRACT 1 OF  
CERTIFICATE OF SURVEY 999

SITUATED IN NE<sup>1</sup>/<sub>4</sub>  
SECTION 23, T1N, R26E, P.M.M.  
CITY OF BILLINGS,  
YELLOWSTONE COUNTY, MONTANA

Prepared for: FELTON ASSOCIATES, INC.  
P.O. BOX 460129  
HUSON, MT. 59846

Prepared by: INTERSTATE ENGINEERING, Inc.  
P.O. BOX 20953  
BILLINGS, MT. 59104-0953

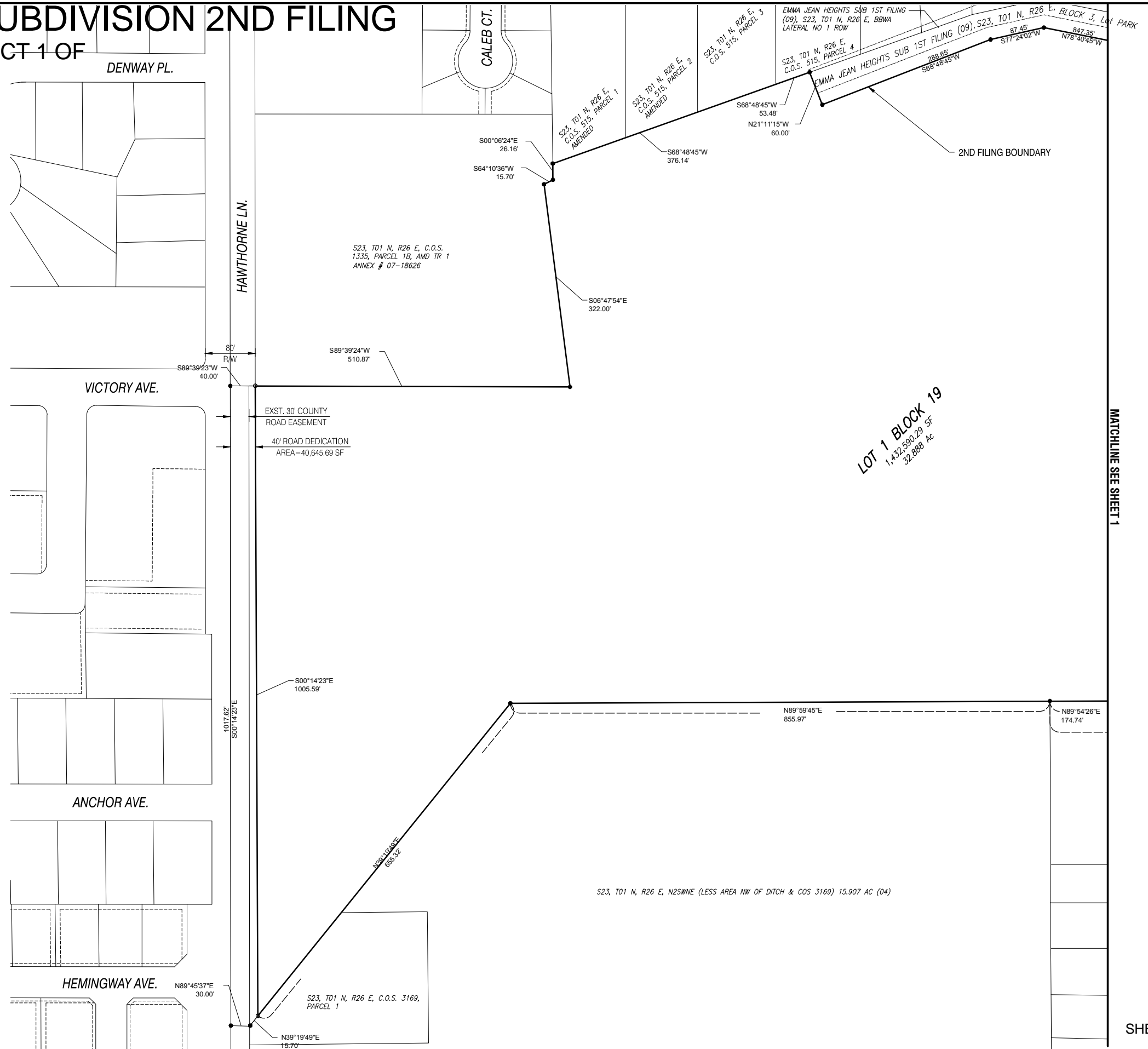
DATE: FEBRUARY 2014

**LEGEND**

- 1/4 SECTION CORNER - SET AS NOTED
- SECTION CORNER - SET AS NOTED
- FOUND REBAR WITH YELLOW PLASTIC CAP
- 1/4 SECTION CORNER - FOUND AS NOTED
- SECTION CORNER - FOUND AS NOTED
- SET 5/8" x 18" REBAR WITH YPC 12669 LS.
- TO BE SET
- CENTER MONUMENT IN MONUMENT BOX

**SCALE**

1" = 80'



MATCHLINE SEE SHEET 1

