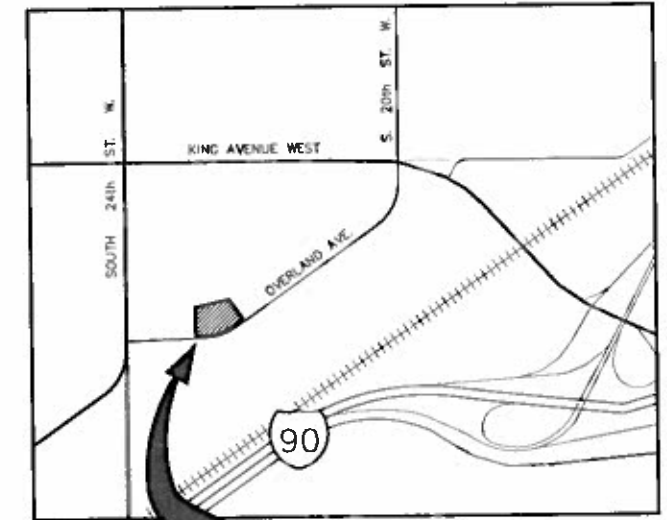
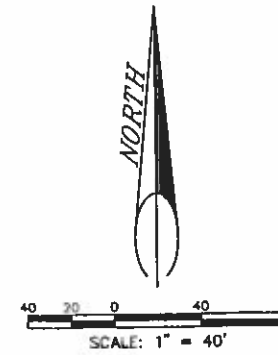


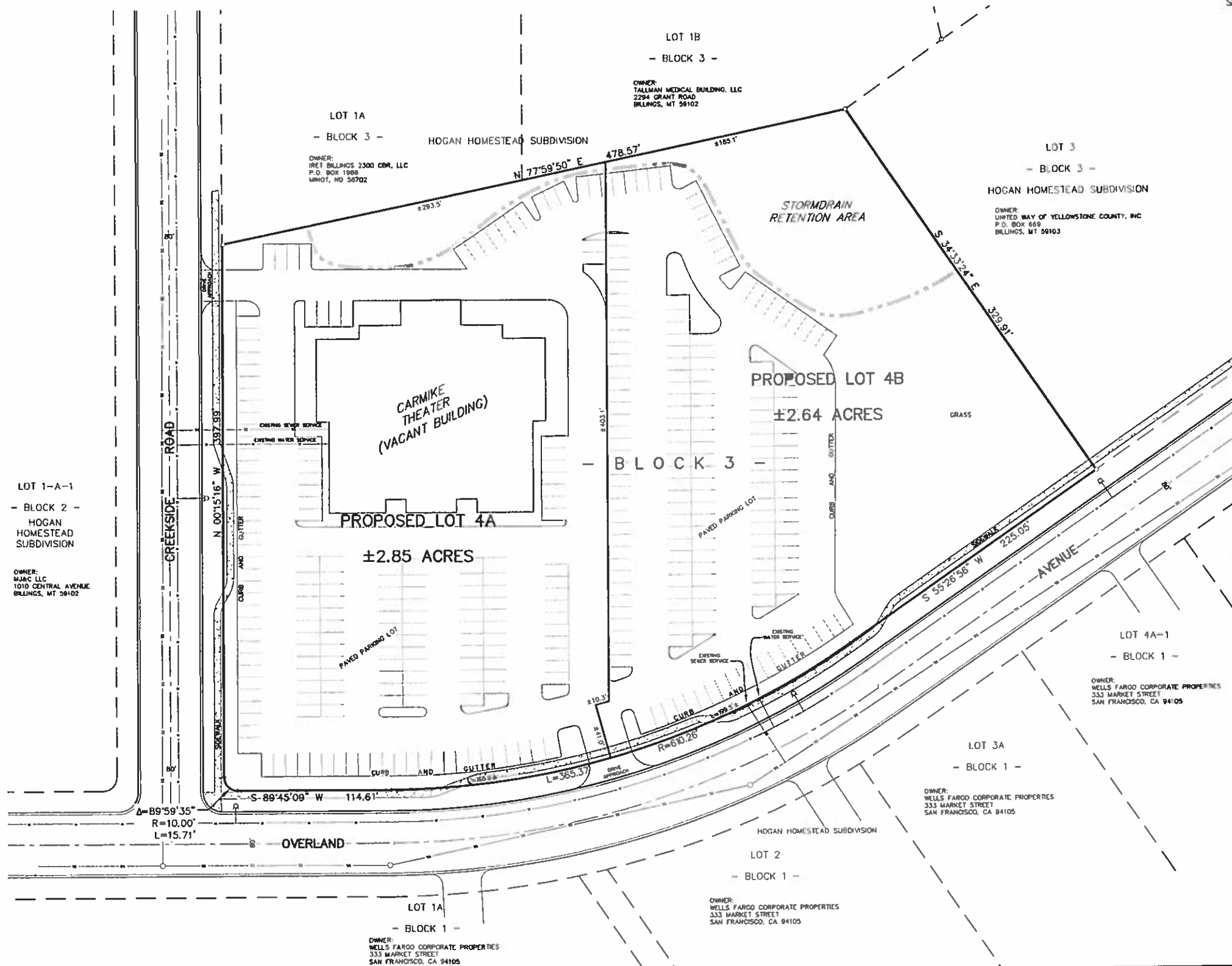
PRELIMINARY PLAT OF AMENDED LOT 4, BLOCK 3,
HOGAN HOMESTEAD SUBDIVISION
 SITUATED IN THE NE1/4 OF SECTION 18, T. 1 S., R. 26 E., P.M.M.
 IN THE CITY OF BILLINGS, YELLOWSTONE COUNTY, MONTANA

PREPARED FOR : VEEDER HOMESTEAD, LLC
 PREPARED BY : SANDERSON STEWART

JANUARY 2014
 BILLINGS, MONTANA



VICINITY MAP
 NOT TO SCALE



PLAT DATA

GROSS AREA	= 5.493 ACRES
NET AREA	= 5.493 ACRES
NUMBER OF LOTS	= TWO
MINIMUM LOT SIZE	= ±2.64 ACRES
MAXIMUM LOT SIZE	= ±2.85 ACRES
LINEAL FEET OF STREETS	= 0
PARKLAND REQUIREMENT	= NONE
EXISTING ZONING	= HIGHWAY COMMERCIAL
SURROUNDING ZONING:	
NORTH	= HIGHWAY COMMERCIAL
SOUTH	= HIGHWAY COMMERCIAL
EAST	= HIGHWAY COMMERCIAL
WEST	= HIGHWAY COMMERCIAL
EXISTING LAND USE	= FORMER THEATER
PROPOSED LAND USE	= COMMERCIAL/PROFESSIONAL
TAX CODE	= A24997

P:\PROJ_MGMT\77223_116_Hogan_Homestead_Sub_1_1_E_3_Plot_Plat_PWA_CADD_C30\B ASE_DWG\Veeder_PP.dwg, 2/3/2014 3:01:50 PM, \\BLUE\Bil - Ricoh 1075 PCL 6