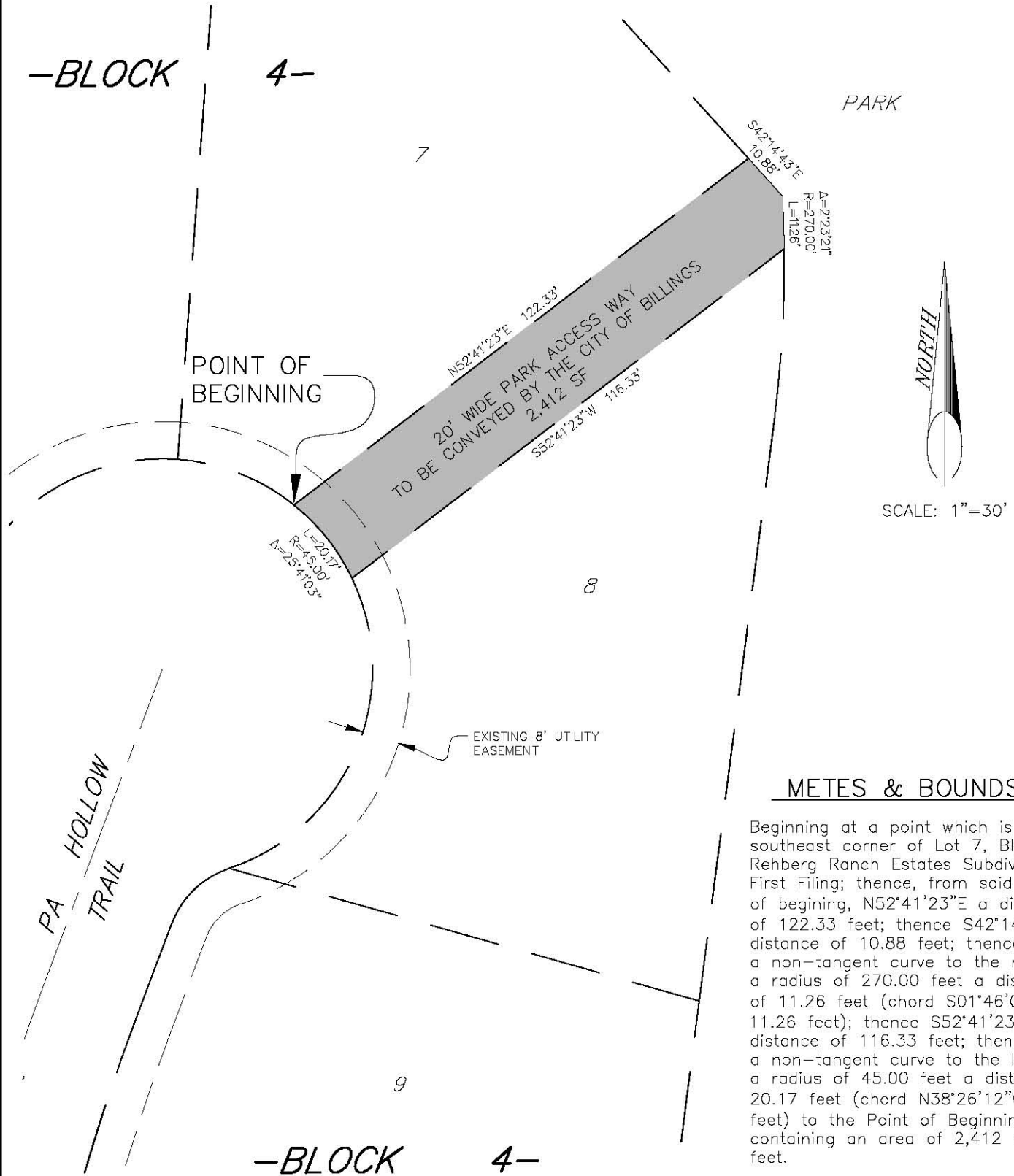


PARKLAND EXHIBIT  
FOR  
LOTS 7 & 8, BLOCK 4 AND THE ADJACENT PARKLAND IN  
REHBERG RANCH ESTATES SUBDIVISION, FIRST FILING

PREPARED FOR : THE CITY OF BILLINGS, MT  
PREPARED BY : SANDERSON STEWART

FEBRUARY 2014  
BILLINGS, MONTANA



METES & BOUNDS

Beginning at a point which is the southeast corner of Lot 7, Block 4, Rehberg Ranch Estates Subdivision, First Filing; thence, from said point of beginning, N52°41'23"E a distance of 122.33 feet; thence S42°14'43"E a distance of 10.88 feet; thence along a non-tangent curve to the right with a radius of 270.00 feet a distance of 11.26 feet (chord S01°46'02"E, 11.26 feet); thence S52°41'23"W a distance of 116.33 feet; thence along a non-tangent curve to the left with a radius of 45.00 feet a distance of 20.17 feet (chord N38°26'12"W, 20.00 feet) to the Point of Beginning; containing an area of 2,412 square feet.