

PRELIMINARY PLAT OF AMENDED LOTS 9 AND 10,
WINEMILLER SUBDIVISION

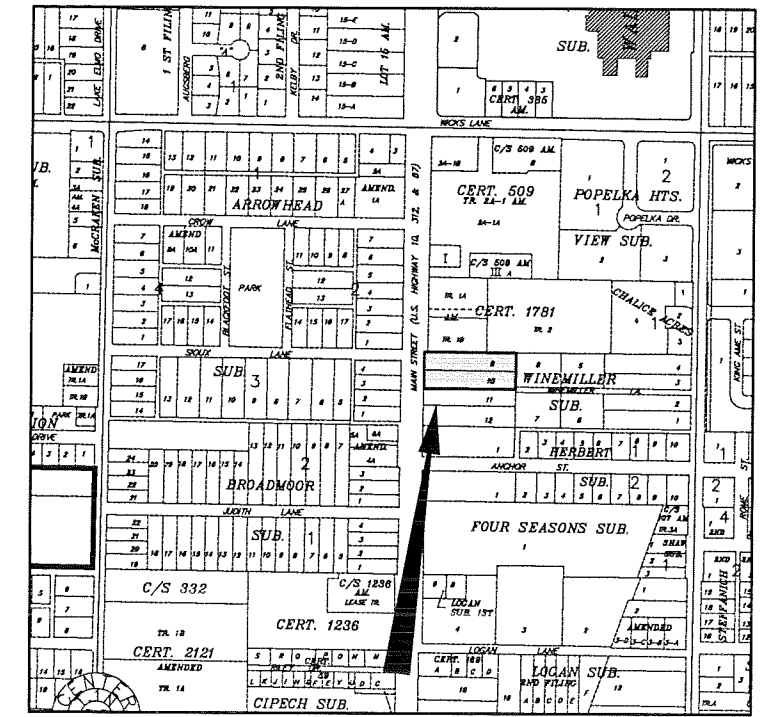
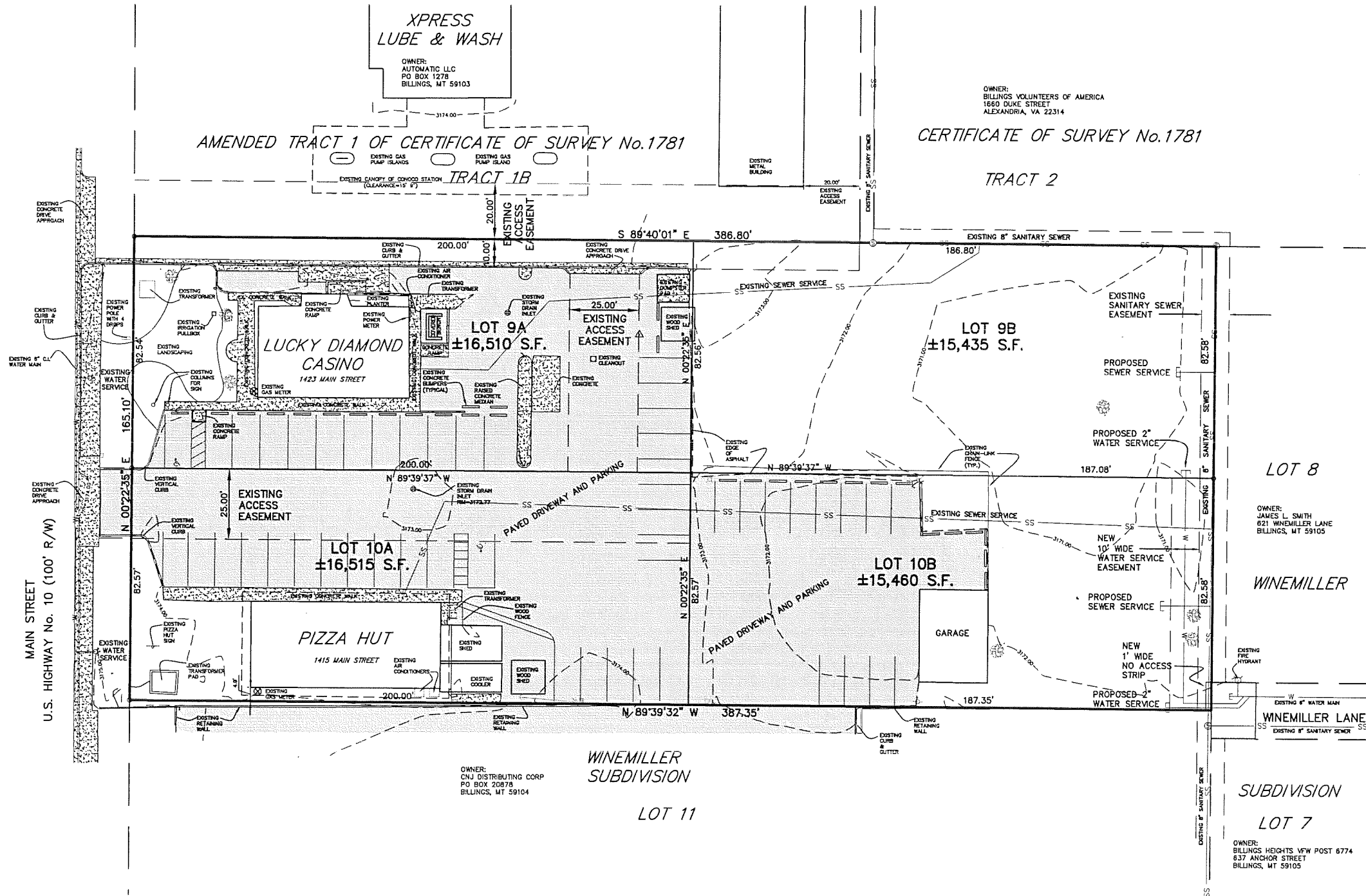
SITUATED IN THE 1/4 OF SECTION , T. 1 N., R. 26 E., P.M.M.
 IN THE CITY OF BILLINGS, YELLOWSTONE COUNTY, MONTANA

PREPARED FOR : HOBBS PARTNERSHIP

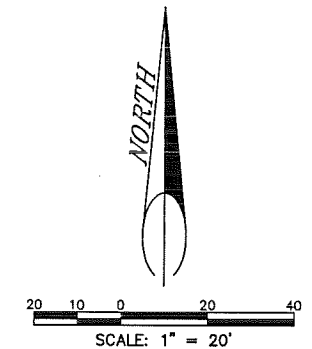
PREPARED BY : SANDERSON STEWART

OCTOBER 2013

BILLINGS, MONTANA



VICINITY MAP
 NOT TO SCALE



PLAT DATA

GROSS AREA	= ±63,920 Sq Ft
NET AREA	= ±63,920 Sq Ft
NUMBER OF LOTS	= 4
MINIMUM LOT SIZE	= ±15,435 Sq Ft
MAXIMUM LOT SIZE	= ±16,515 Sq Ft
LINEAL FEET OF STREETS	= 0
PARKLAND REQUIREMENT	= NONE
EXISTING ZONING	= HIGHWAY COMMERCIAL
SURROUNDING ZONING:	
NORTH	= HIGHWAY COMMERCIAL
SOUTH	= HIGHWAY COMMERCIAL
EAST	= HIGHWAY COMMERCIAL
WEST	= HIGHWAY COMMERCIAL
EXISTING LAND USE	= COMMERCIAL
PROPOSED LAND USE	= COMMERCIAL
TAX CODE	= C01597 & C01598