

PRELIMINARY PLAT OF AMENDED LOT 1, BLOCK 1,  
**GEYSER PARK SUBDIVISION**

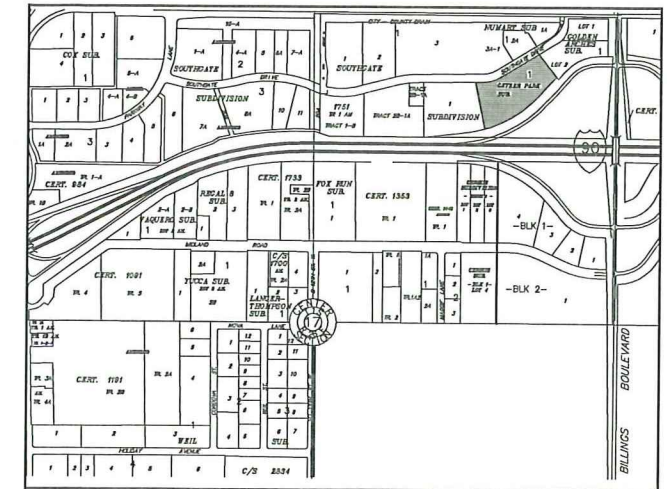
SITUATED IN THE NE 1/4 SECTION 17, T. 1 S., R. 26 E., P.M.M.  
 IN THE CITY OF BILLINGS, YELLOWSTONE COUNTY, MONTANA

PREPARED FOR : JOHN WILLIAMSON

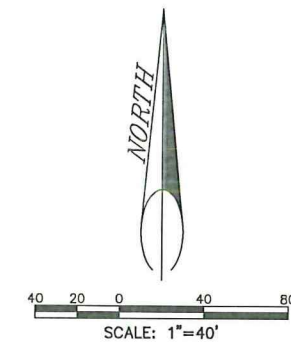
APRIL 2014

PREPARED BY : SANDERSON STEWART 

BILLINGS, MONTANA



VICINITY MAP  
 NOT TO SCALE



**PLAT DATA**

GROSS AREA	=	5.274 ACRES
NET AREA	=	5.274 ACRES
NUMBER OF LOTS	=	2
MINIMUM LOT SIZE	=	±2.178 ACRES
MAXIMUM LOT SIZE	=	±3.098 ACRES
LINEAL FEET OF STREETS	=	N/A
PARKLAND REQUIREMENT	=	N/A
PARKLAND DEDICATION	=	N/A
EXISTING ZONING	=	ENTRYWAY GENERAL COMMERCIAL
SURROUNDING ZONING:		
NORTH	=	ENTRYWAY GENERAL COMMERCIAL
SOUTH	=	ENTRYWAY GENERAL COMMERCIAL
EAST	=	ENTRYWAY GENERAL COMMERCIAL
WEST	=	ENTRYWAY GENERAL COMMERCIAL
EXISTING LAND USE	=	ENTERTAINMENT CENTER
PROPOSED LAND USE	=	ENTERTAINMENT CENTER & HOTEL
TAX CODE	=	A28409