

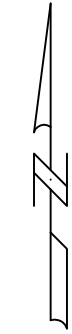
# PLAT OF LAKE HILLS SUBDIVISION, 33rd FILING

BEING TRACT D, CERTIFICATE OF SURVEY NO. 793, AND & LOTS 1, 2, 7 & 8, BLOCK 19 OF LAKE HILLS SUBDIVISION, 15TH FILING, AND LOT 1, BLOCK 54, OF LAKE HILLS SUB, 21 ST FILING, AND LOT 5, 31ST FILING (CORRECTED), SITUATED IN SECTION 16, T. 1 N., R. 26 E., P.M.M. IN THE CITY OF BILLINGS, YELLOWSTONE COUNTY, MONTANA

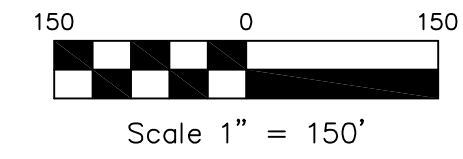
PREPARED FOR: RON HILL  
SURVEYOR: NORTH STAR LAND SERVICES, P.C.  
ENGINEER: BLUELINE ENGINEERING LLC  
MAY, 2014  
BILLINGS, MONTANA

**SUBDIVISION DETAILS:**

Gross Area = 120.223 ACRES  
Net Area = 120.223 ACRES  
Road Area = 0.000 ACRES  
Zoning = RESIDENTIAL



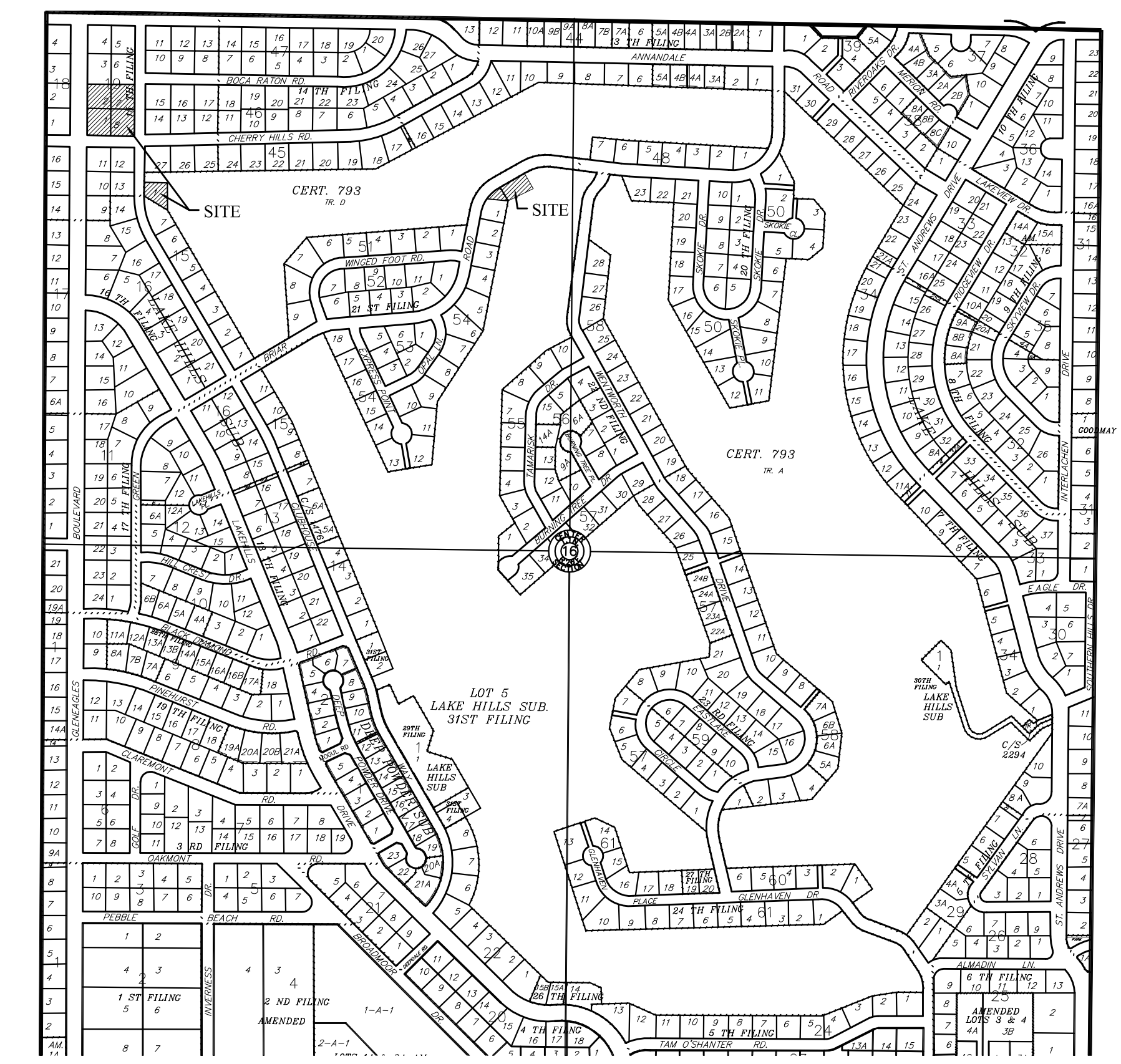
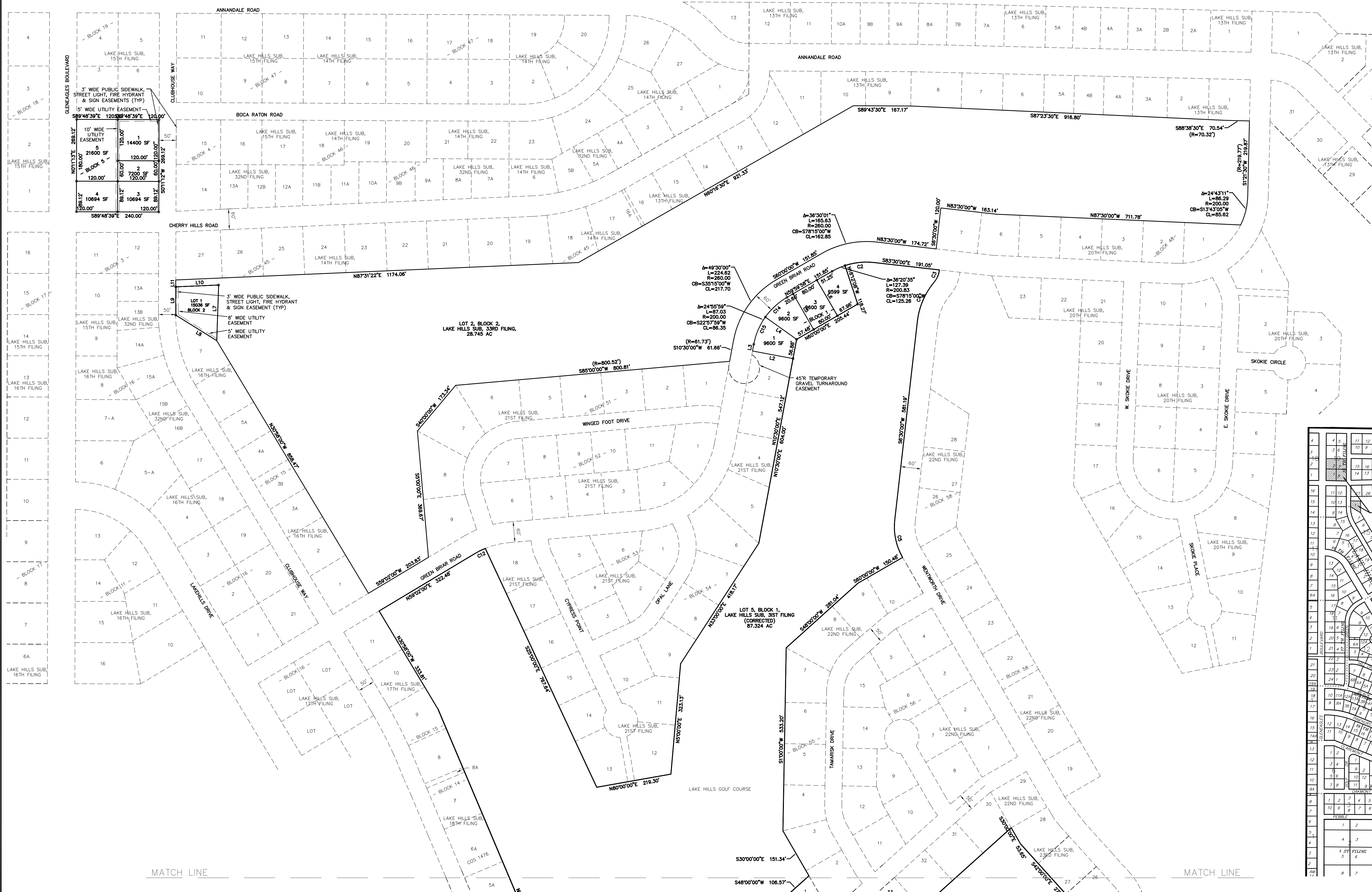
○ = Set 5/8 Rebar with YPC 11289LS  
∨ = CORNERS FOUND FROM PREVIOUS SURVEYS



**BASIS OF BEARING:** Lake Hills Subdivision

CURVE TABLE					
CURVE #	ARC LENGTH	RADIUS	DELTA	CHORD BEARING	CHORD LENGTH
C2	86.21	201.91	24°27'52"	S84°08'56"W	85.56
C3	38.85	66.45	33°29'53"	S23°14'56"W	38.30
C4	126.29	215.99	33°30'04"	S23°14'51"W	124.50
C5	114.67	180.00	36°30'02"	S11°45'01"E	112.74
C6	36.65	300.00	7°00'00"	S9°00'00"E	36.63
C7	109.96	180.00	35°00'00"	S52°30'00"E	108.25
C8	79.41	130.00	35°00'00"	S52°30'00"E	78.18
C9	58.03	95.00	35°00'00"	S17°30'00"E	57.13
C10	462.56	470.00	56°23'20"	N1°48'20"W	444.12
C11	23.75	350.00	3°53'17"	N21°00'21"W	23.75
C12	36.84	240.00	8°47'42"	N63°25'51"E	36.80
C14	85.76	200.00	24°34'01"	N47°42'59"E	85.10
C15	87.03	200.00	24°55'59"	N22°57'59"E	86.35

LINE TABLE		
LINE #	LENGTH	DIRECTION
L2	120.00	N79°30'00"W
L3	20.00	N10°30'00"E
L4	111.91	S54°25'26"E
L5	120.00	S30°00'02"E
L6	120.00	S30°00'02"E
L7	162.12	S1°55'03"W
L8	141.02	N58°07'29"W
L9	82.18	N01°11'55"E
L10	125.03	N87°31'58"E
L11	20.00	N01°11'55"E



VICINITY MAP  
NOT TO SCALE